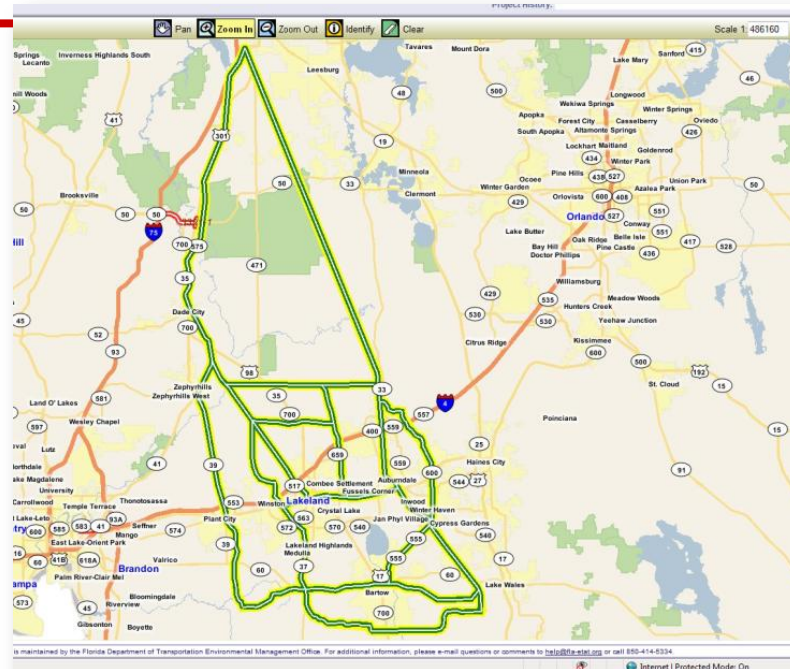
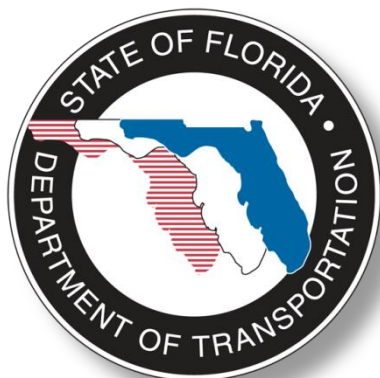


Planning Screen



ETAT Workshop 2011



Peter McGilvray
Environmental Quality Performance
Administrator



What is the Planning Screen?

What decisions are we hoping to make through this screening?

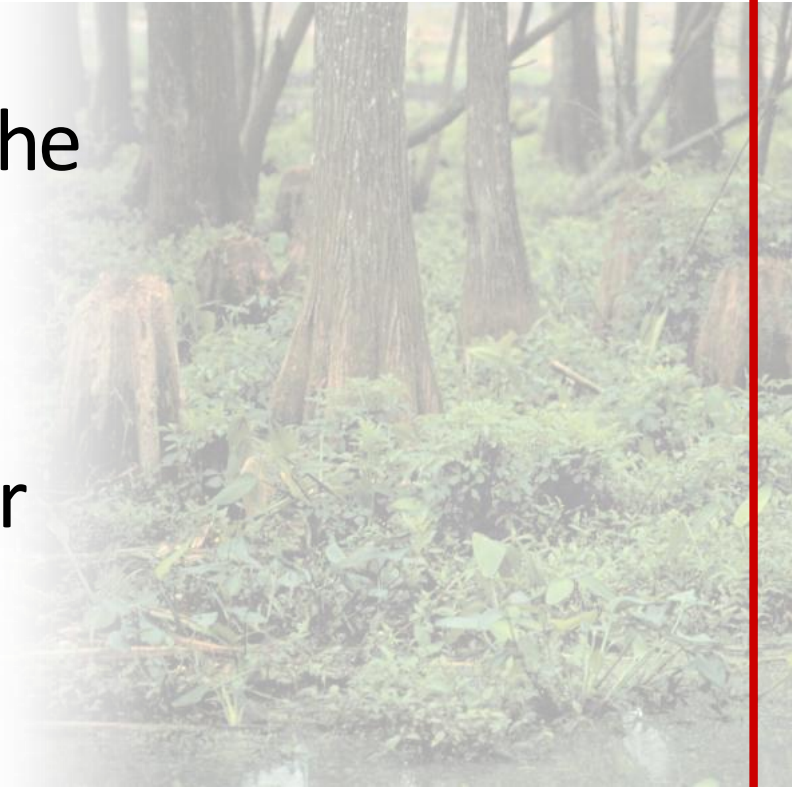
- ◆ Understanding of
 - Purpose and need
 - Affected environment
- ◆ Agreement on mode
- ◆ Initial identification of fatal flaws
- ◆ Development and refinement of reasonable alternatives
- ◆ Inform our Cost Feasible Plans



What is the Planning Screen?

What do we need from you?

- ◆ Actionable comments
 - Tell us where NOT to place the improvements
 - Fatal flaw analysis
- ◆ Tell us about any plans for your resources



What does the Planning Screen do?

- ◆ Screens projects for critical issues
- ◆ Develops and refines the purpose and need
- ◆ Offers insight into how alternatives could be developed



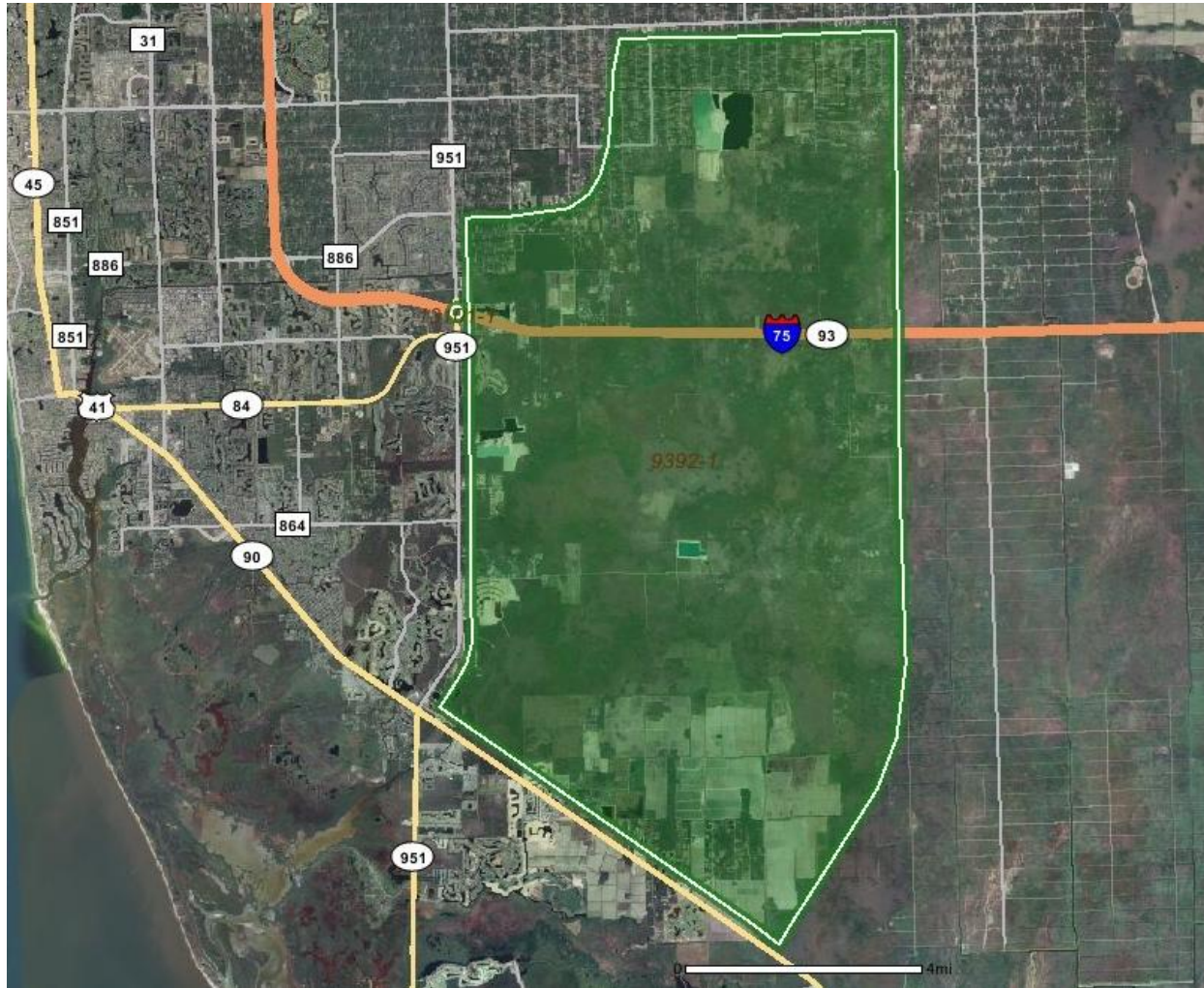
What do we know?

It depends on:

- ◆ What type of project?
 - New vs. Existing
 - Urban vs. Rural
- ◆ What plan is it coming from?
- ◆ How much work has been completed (or not)?



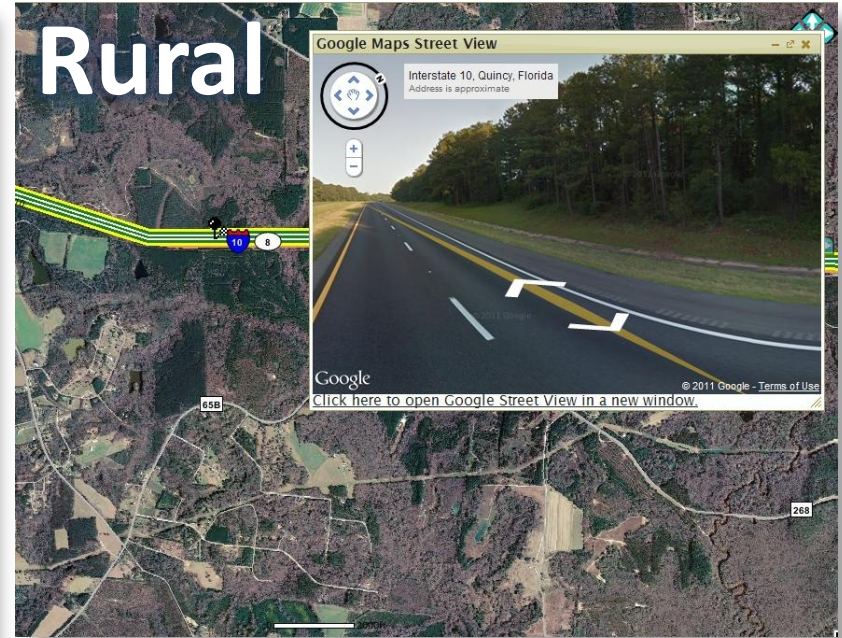
Planning Study Area



General Corridor Alternatives

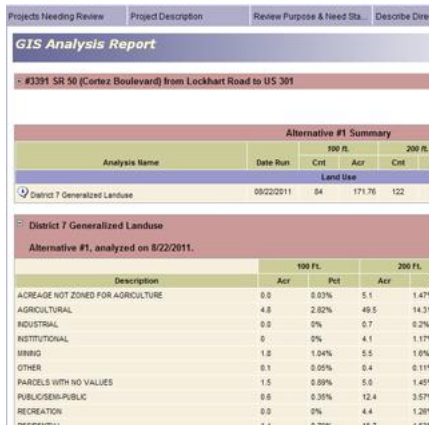


Existing Facility



What do we know?

- ◆ The tool provides a window to what the FDOT knows
 - supplement the tool with your agency expertise.
- ◆ Preliminary resource information
 - GIS Analysis results are already a part of the project record
- ◆ District resources



GIS Analysis Report

Project: #3391 SR 56 (Cortez Boulevard) from Lockhart Road to US 301

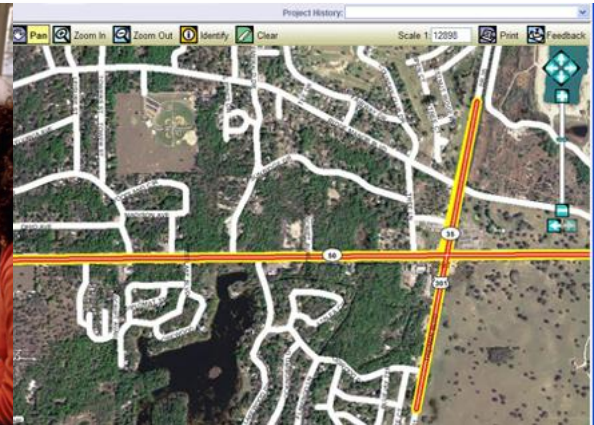
Alternative #1 Summary

Analysis Name	Date Run	Cont	Acres	Cost
District 7 Generalized Landuse	05/22/2011	54	171.76	122

District 7 Generalized Landuse

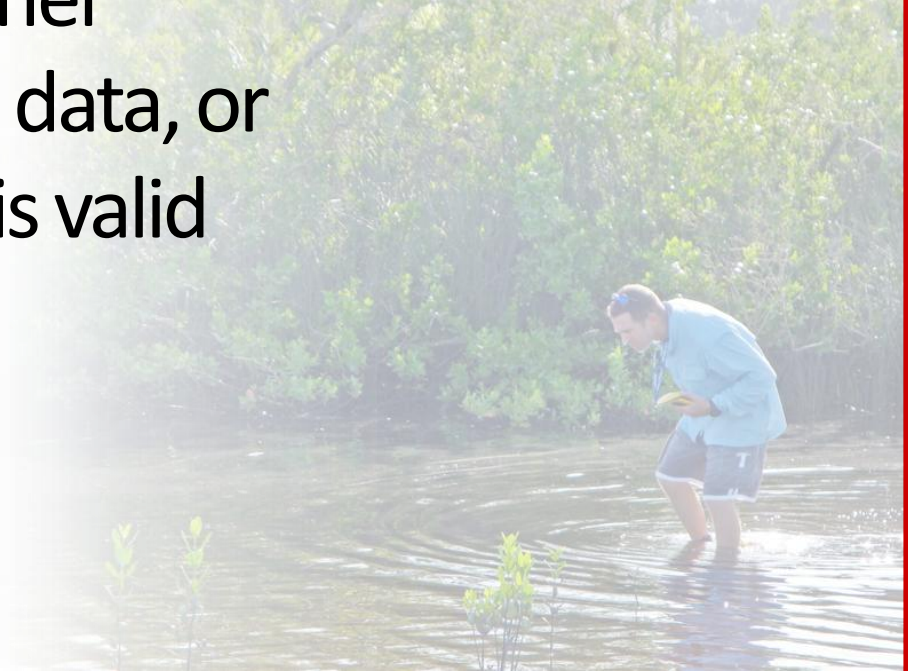
Alternative #1, analyzed on 5/22/2011.

Description	100 Ft.		200 Ft.	
	Acres	Pct	Acres	Pct
ACREAGE NOT ZONED FOR AGRICULTURE	0.0	0.03%	5.1	1.47%
AGRICULTURAL	4.8	2.82%	49.5	14.3%
INDUSTRIAL	0.0	0%	0.7	0.2%
INSTITUTIONAL	0	0%	4.1	1.17%
MIXED	1.0	1.04%	5.5	1.6%
OTHER	0.1	0.05%	0.4	0.11%
PARCELS WITH NO VALUES	1.5	0.89%	5.0	1.45%
PUBLIC/SEMI-PUBLIC	0.0	0.35%	12.4	3.57%
RECREATION	0.0	0%	4.4	1.28%
RESIDENTIAL	1.4	0.79%	15.7	4.53%



What are we looking for?

- ◆ Looking to the ETAT to either
 - (A) fill in the gaps in the data, or
 - (B) agree that the data is valid
- ◆ Personal knowledge
 - of the area
 - of the resource
- ◆ Actions
 - Tell us what you need – be specific
 - Identify activities we can complete between screening events to answer any questions



What are we looking for?

- ◆ ETAT to complete and validate data
- ◆ Input personal knowledge of area and resource
- ◆ Report needed actions between screenings



Examples of types of activities

- ◆ Seasonal studies
- ◆ Preliminary site inspections
- ◆ Studies to further define or justify the Purpose and Need



How are the ETAT comments used?

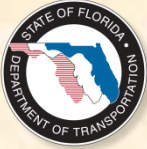
- ◆ Steers implementation of the plan
- ◆ Scope development for future studies
 - Identification of critical issues
 - Advancing studies where practical
- ◆ Better understanding of agency positions on issues/resources
- ◆ Early consideration of alternatives



- ◆ Refine project information based on ETAT comments
- ◆ Identify activities to clarify or address questions
- ◆ Initiate efforts to clarify or resolve “Potentially Disputed” and “Substantial” issues
- ◆ Await prioritization



For More Information



Peter McGilvray

peter.mcgilvray@dot.state.fl.us

850-414-5330

ETDM Help Desk

help@fla-etat.org

(850) 414-5334

ETDM References

EST Library

