

A faint, light blue and green map of the state of Florida serves as the background for the slide. The map shows the state's outline and some internal geographical features like rivers and terrain shading.

University of Florida GeoPlan Center: Florida Geographic Data Library

- Statewide Data Portal
- Includes Downloadable Datasets
- Over 400+ current and historic GIS layers from over 35 local, state, federal, and private agencies.
- Primarily vector data.
- www.fgdl.org

An aerial photograph of the state of Florida, showing the coastline, major waterways, and land cover. The image is used as a background for the presentation slide.

Florida Geographic Data Library

- Funded by FL Department of Transportation. Data in FGDL is used for FDOT's environmental permitting process – ETDM.
- Data is checked regularly for updates (approximately quarterly).
- Each data layer includes FGDC metadata.
- Data is harvested monthly by the Geospatial One-Stop – geodata.gov



Census Geography

- An automated computer process looks for all visible and nonvisible features in the MAF/TIGER geographic database that should be a block boundary and creates a block each time those features create a polygon.
- Features include: roads, streams, and railroad tracks, and nonvisible boundaries such as property lines, city, township, school district, county limits

2010 Census

- Long form version of the census no longer exists
- Long form data is found in the American Community Survey (ACS)
 - 1-year, 3-year, and 5-year averages released annually
 - Lowest geography level available is block group and only available in the 5-year averages



Census Quick Facts

- Block, block group, and tract ID numbers are only unique for the decennial vintage products
- First digit of the census block number identifies the block group
- TIGER shapefiles updated yearly to reflect geographical changes in legal or statistical areas
- Blocks may be split when a change in another geographic boundary occurs, such as an incorporated place annexation. If a block is split in between decades, a suffix will be added to the block number. For example, block 1000 would become block 1000A and 1000B.

2010 Geographic Changes

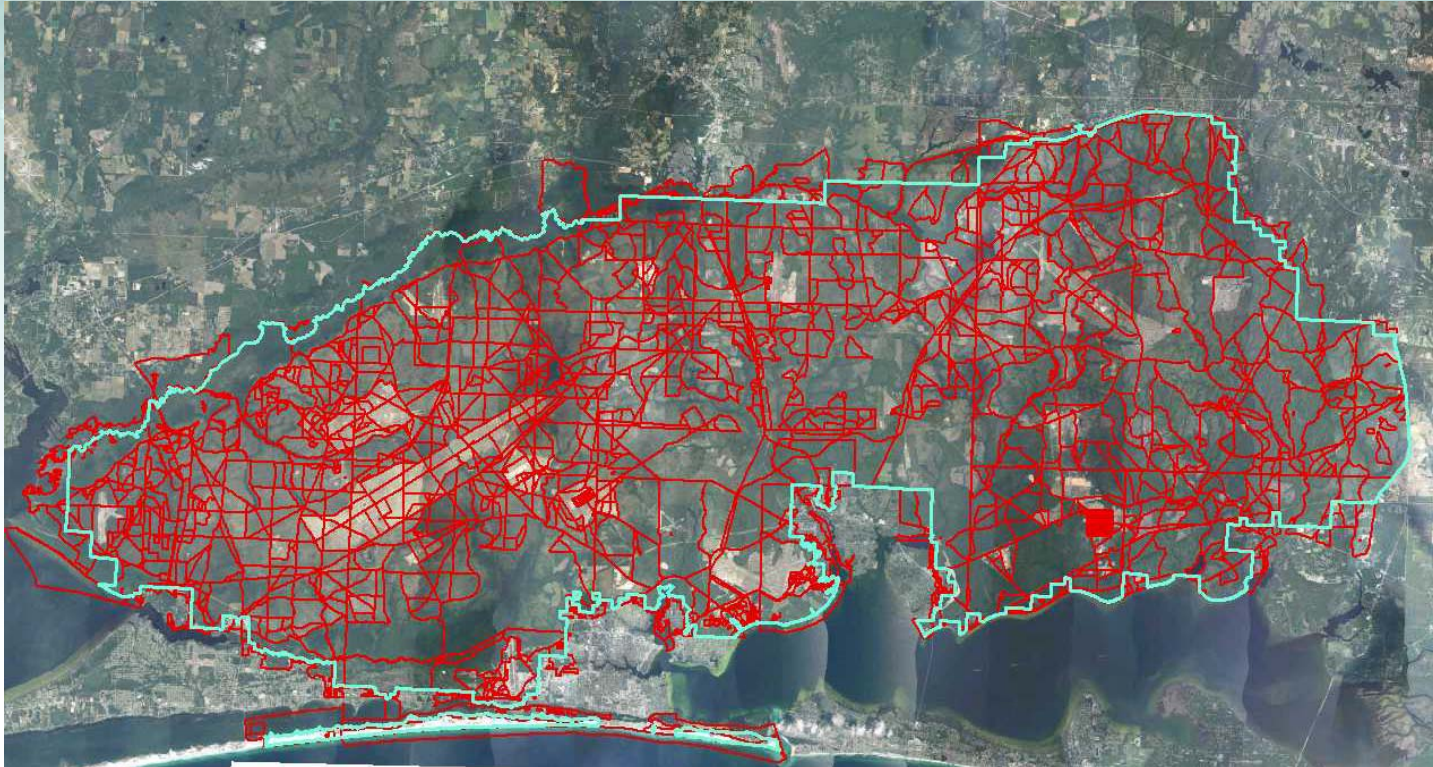
- Increases in roads will lead to increase in boundaries, thus increasing the number of blocks
- For Census 2000, roads within military installations and National Parks were not consistently held for census block delineation. This requirement has been removed, and military installations and National Parks were treated the same as the rest of the nation
- No more suppression of roads within Military and National Park areas led to a large increase in number of blocks within military bases

Eglin Air Force Base in 2000



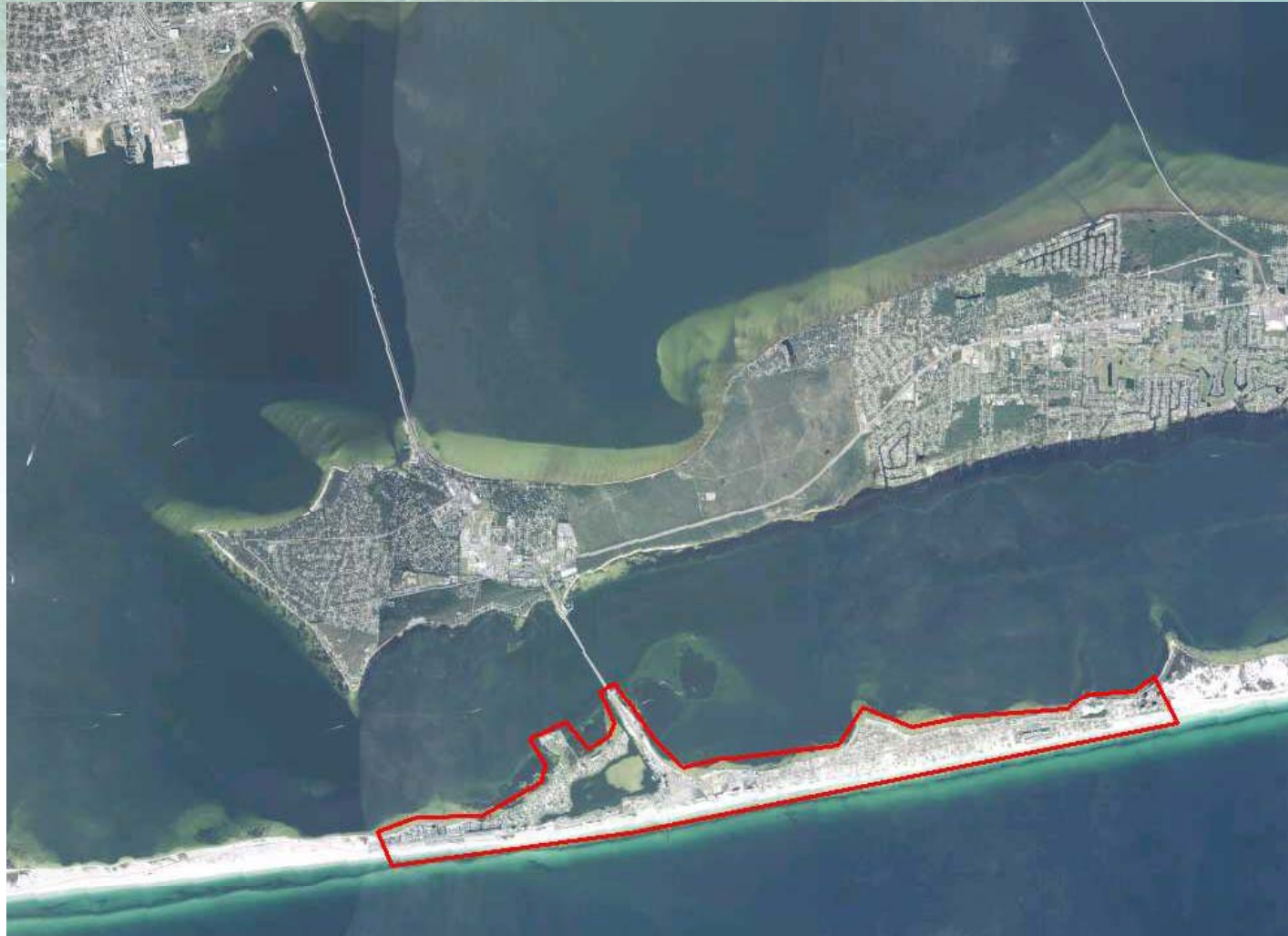
223 Census 2000 blocks

Eglin Air Force Base in 2010



2569 Census 2010 blocks

CCI – Pensacola Beach



Pensacola Beach

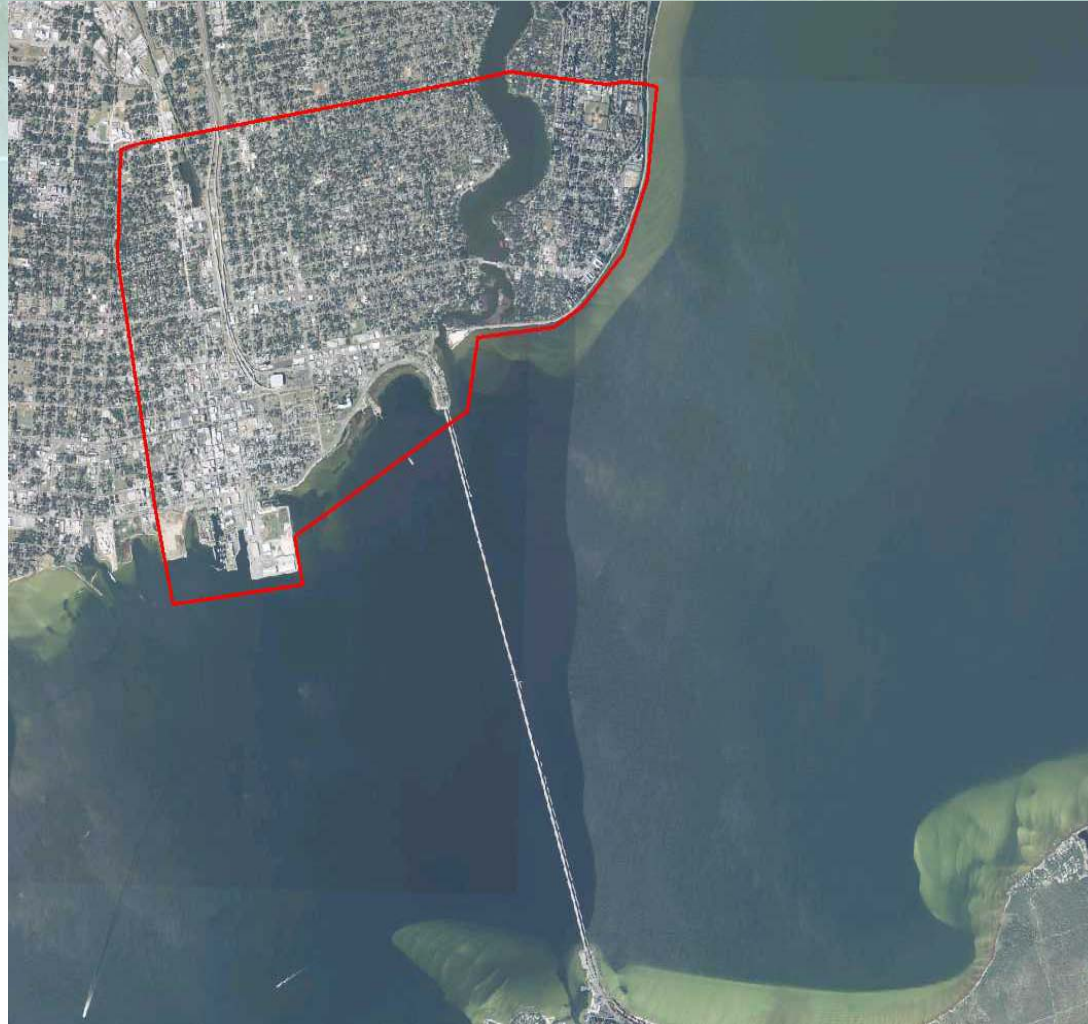
2000 Census

| | Community # | Community % | State # | State % | |
|---------------------------------|-------------|-------------|----------|---------|------------------------------|
| Demographics: Community & State | 2,374 | 95.42% | 10456458 | 65.42% | White |
| | 14 | 0.56% | 2244701 | 14.04% | Black or African American |
| | 32 | 1.29% | 2680314 | 16.77% | Hispanic |
| | 0 | 0.00% | 5409 | 0.03% | Hawaiian or Pacific Islander |
| | 26 | 1.05% | 260532 | 1.63% | Asian |
| | 10 | 0.40% | 43888 | 0.27% | American Indian or Eskimo |
| | 14 | 0.56% | 27676 | 0.17% | Other |
| | 18 | 0.72% | 263400 | 1.65% | Claimed 2 or More Races |

2010 Census

| | Community # | Community % | State # | State % | |
|---------------------------------|-------------|-------------|----------|---------|--|
| Demographics: Community & State | 1,509 | 97.67% | 14109162 | 75.04% | White |
| | 9 | 0.58% | 2999862 | 15.96% | Black or African American |
| | 19 | 1.23% | 4223806 | 22.47% | Hispanic |
| | 0 | 0.00% | 12286 | 0.07% | Native Hawaiian and Other Pacific Islander |
| | 9 | 0.58% | 454821 | 2.42% | Asian |
| | 6 | 0.39% | 71458 | 0.38% | American Indian or Alaska Native |
| | 3 | 0.19% | 681144 | 3.62% | Other |
| | 8 | 0.52% | 472577 | 2.51% | Claimed 2 or More Races |

CCI – Pensacola 3-Mile Bridge



Pensacola 3-Mile Bridge

2000 Census

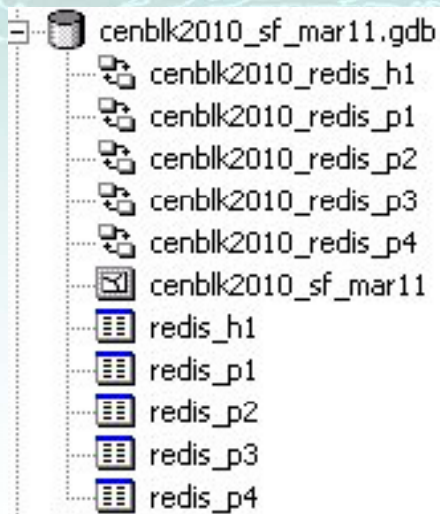
| | Community # | Community % | State # | State % | |
|---------------------------------|-------------|-------------|----------|---------|------------------------------|
| Demographics: Community & State | 8,371 | 69.56% | 10456458 | 65.42% | White |
| | 3,018 | 25.08% | 2244701 | 14.04% | Black or African American |
| | 216 | 1.79% | 2680314 | 16.77% | Hispanic |
| | 6 | 0.05% | 5409 | 0.03% | Hawaiian or Pacific Islander |
| | 112 | 0.93% | 260532 | 1.63% | Asian |
| | 70 | 0.58% | 43888 | 0.27% | American Indian or Eskimo |
| | 55 | 0.46% | 27676 | 0.17% | Other |
| | 187 | 1.55% | 263400 | 1.65% | Claimed 2 or More Races |

2010 Census

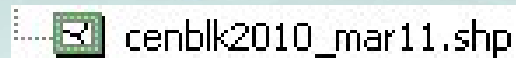
| | Community # | Community % | State # | State % | |
|---------------------------------|-------------|-------------|----------|---------|--|
| Demographics: Community & State | 8,516 | 74.47% | 14109162 | 75.04% | White |
| | 2,365 | 20.68% | 2999862 | 15.96% | Black or African American |
| | 334 | 2.92% | 4223806 | 22.47% | Hispanic |
| | 11 | 0.10% | 12286 | 0.07% | Native Hawaiian and Other Pacific Islander |
| | 182 | 1.59% | 454821 | 2.42% | Asian |
| | 64 | 0.56% | 71458 | 0.38% | American Indian or Alaska Native |
| | 53 | 0.46% | 681144 | 3.62% | Other |
| | 244 | 2.13% | 472577 | 2.51% | Claimed 2 or More Races |

Census Data 2010

File GeoDatabase

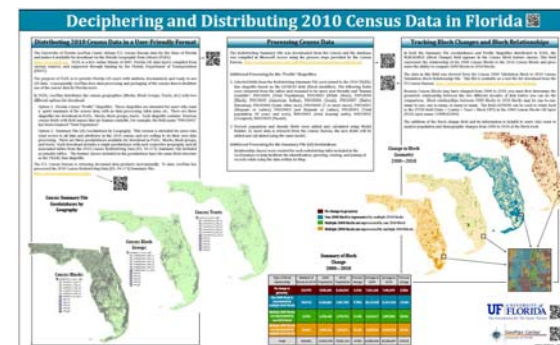


Shapefile



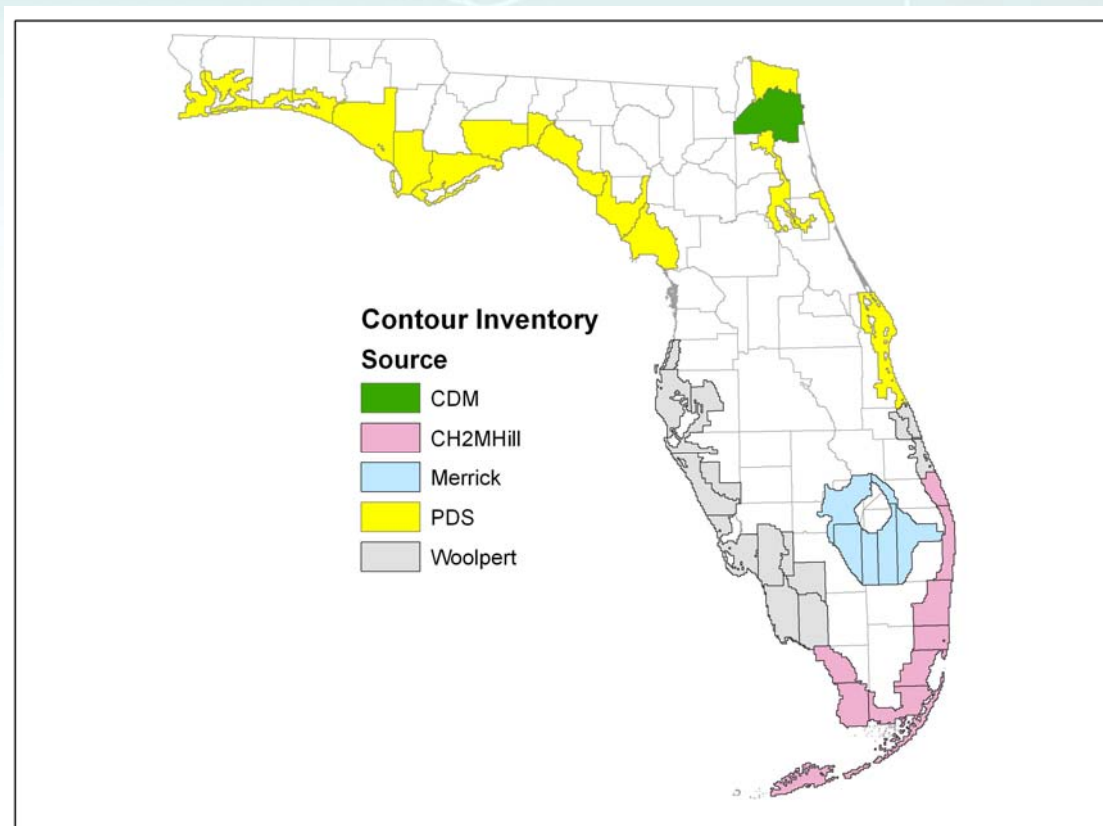
| NOT_HISP | HSE_UNITS | OCCUPIED | VACANT | POP18 | POP2010 | ACRES |
|----------|-----------|----------|--------|-------|---------|-----------|
| 0 | 0 | 0 | 0 | 0 | 0 | 2.95556 |
| 0 | 0 | 0 | 0 | 0 | 0 | 0.76615 |
| 6 | 3 | 3 | 0 | 6 | 6 | 425.30350 |
| 20 | 9 | 8 | 1 | 18 | 20 | 28.80622 |
| 1 | 1 | 1 | 0 | 1 | 1 | 2.34266 |
| 0 | 0 | 0 | 0 | 0 | 0 | 1.75695 |
| 2 | 2 | 1 | 1 | 2 | 2 | 33.82311 |
| 13 | 7 | 6 | 1 | 14 | 15 | 94.41370 |
| 38 | 14 | 13 | 1 | 26 | 39 | 33.82718 |
| 0 | 0 | 0 | 0 | 0 | 0 | 1.55539 |
| 0 | 0 | 0 | 0 | 0 | 0 | 337.02228 |
| 52 | 23 | 18 | 5 | 40 | 53 | 106.47883 |
| 7 | 2 | 2 | 0 | 3 | 7 | 4.54819 |

<http://www.fgdl.org/poster>



LIDAR Derived Contour Data

| CONTENT TITLE ↑ | FILENAME | PUBLISHER/ ONLINE LINK | EXTENT | PUB DATE | FGDL ADDED | DOWNLOAD |
|--|-------------|--|--------|----------|------------|--|
| FLORIDA 2FT CONTOUR LINES BY COUNTY - 2009 (FILE GEODATABASE FORMAT) | TOPO2FT_GDB | Florida Division of Emergency Management | COUNTY | 20090000 | 2010-09-16 | Download View Details |
| FLORIDA 2FT CONTOUR LINES BY COUNTY - 2009 (SHAPEFILE FORMAT) **Note: More counties are available in Geodatabase format due to size limitations. See the layer TOPO2FT_GDB | TOPO2FT_SHP | Florida Division of Emergency Management | COUNTY | 20090000 | 2010-09-16 | Download View Details |



New & Updated EST data layers

| Year | # data layers | New | Updated |
|------|---------------|-----|---------|
| 2007 | 399 | 90 | 309 |
| 2008 | 208 | 40 | 168 |
| 2009 | 278 | 23 | 255 |
| 2010 | 268 | 51 | 217 |
| 2011 | 371 | 90 | 281 |

GIS Links

GeoPlan > Links > FGDL GIS Data Sources

Florida Geographic Data Library Data Source Links

The Florida Geographic Data Library (FGDL) houses data from a number of Federal, State, and Local sources. Below are links to the websites from which we collect GIS data for FGDL.

- [U.S. National Level Data GIS Sources](#)
- [Florida State Agency GIS Data Sources](#)
- [Florida GIS Libraries](#)
- [Florida Water Management District Data Sources](#)
- [Regional Planning Council Data Sources](#)
- [Local Agency Data Sources \(County & City\)](#)
- [Software Links](#)
- [Report dead links or add your data link \(Click Here\)](#)

U.S. National Level Data Sources

Environmental Systems Research Institute, Inc. (Esri)

[ESRI Main Page](#)

[ESRI Data Products Page](#)

[ESRI Download Census 2000 TIGER/Line® Data](#)

FGDL Metadata Explorer

FGDL Search/ Download Data - Mozilla Firefox

File Edit View History Bookmarks Tools Help

http://www.fgdl.org/metadataexplorer/explorer.jsp

☆ Google

FGDL Search/ Download Data

LOGIN HELP FGDL HOME

FGDL METADATA EXPLORER: SEARCH & DOWNLOAD DATA

Search Browse

Choose content theme:
<All Content Themes>

Optional Keyword (e.g. river):

Start Search

☐ Search NSDI Clearinghouse
(to search other Metadata Servers)

SEARCH TIPS

Searches are NOT case sensitive.
For wild card characters - use %
Search results return exact matches. The search for **park** may not necessarily return "parking" or "parks". Use % for a more robust search. For example, use **park%** to search for parks.

Welcome to the FGDL Metadata Explorer

With the Metadata Explorer, you can search, browse, and download data from the **Florida Geographic Data Library (FGDL)**, a mechanism for distributing spatial (GIS) data throughout the state of Florida. The FGDL is warehoused and maintained at the University of Florida's GeoPlan Center.

SEARCHING DATA

Use the Search Form on the left to search FGDL data layers:

1. Choose a Content Theme (or choose all themes).
2. Type in a specific keyword (this is optional).
3. Press "Search"

BROWSING DATA

Use the Browse tab (on your top left) to view FGDL data layers by category.
Or View ALL Data Layers in the FGDL by clicking on the 'All' category.

If you are looking for imagery and raster data, such as DOQQs and DRGs, please see [LABINS](#).

Want to be informed when new and updated GIS layers added to FGDL? **Subscribe to the FGDL Listserve:** www.fgdl.org/updates.html

The FGDL supports the [National Spatial Data Infrastructure \(NSDI\)](#) through the following activities:

- Maintenance of Federal Geographic Data Committee (FGDC) compliant metadata for all data layers distributed.
- Maintenance of the FGDL Metadata Explorer, a GIS Catalog Portal, from which data can be shared, accessed, and searched by other portals and individuals free of charge.
- Participation in the [Geospatial One Stop \(GOS\)/ geodata.dov](#), with FGDL metadata records regularly harvested by GOS.
- Participation as a Clearinghouse Node in the [FGDC's Clearinghouse Registry](#).

FGDL DATA DISCLAIMER:

The Florida Geographic Data Library is a collection of Geospatial Data compiled by the University of Florida GeoPlan Center with support from the Florida Department of Transportation. GIS data available in FGDL is collected from various state, federal, and other agencies ("data sources") who are data stewards, producers, or publishers. The data available in FGDL may not be the most current version of the data offered by the data source. University of Florida GeoPlan Center makes no guarantees about the currentness of the data and suggests that data users check with the data source to see if more recent versions of the data exist.

Furthermore, the GIS data available in the FGDL are provided "as is". The University of Florida GeoPlan Center makes no warranties, guaranties or representations as to the truth, accuracy or completeness of the data provided by the data sources. The University of Florida GeoPlan Center makes no representations or warranties about the quality or suitability of the materials, either expressly or implied, including but not limited to any implied

Done

FGDL Metadata Explorer

FGDL Search/ Download Data - Mozilla Firefox

File Edit View History Bookmarks Tools Help

http://www.fgdl.org/metadataexplorer/explorer.jsp

FGDL Search/ Download Data

LOGIN FTP TOOLS HELP ABOUT HOME

FGDL METADATA EXPLORER: SEARCH & DOWNLOAD DATA

Search Browse

Home > Source_Agency > U.S. Census Bureau

Records Found: 27

Downloadable Data

| CONTENT TITLE | FILENAME | PUBLISHER/ ONLINE LINK | EXTENT | PUB DATE | FGDL ADDED ↓ | DOWNLOAD |
|--|------------------------|------------------------------------|--------|----------|--------------|--|
| FLORIDA COUNTY BOUNDARIES - STATEWIDE JUNE 2011 | CNTBND_JUN11 | U.S. Census Bureau | STATE | 1990 | 2011-06-16 | Download View Details |
| 2010 US CENSUS TRACTS IN FLORIDA (SHAPEFILE WITH SELECTED FIELDS FROM 2010 REDISTRICTING SUMMARY FILE) | CENTRACT2010_MAR11 | U.S. Census Bureau | STATE | 20110317 | 2011-05-30 | Download View Details |
| 2010 US CENSUS BLOCKS IN FLORIDA (SHAPEFILE WITH SELECTED FIELDS FROM 2010 REDISTRICTING SUMMARY FILE) | CENBLK2010_MAR11 | U.S. Census Bureau | STATE | 20110317 | 2011-05-30 | Download View Details |
| 2010 US CENSUS BLOCK GROUPS IN FLORIDA (SHAPEFILE WITH SELECTED FIELDS FROM 2010 REDISTRICTING SUMMARY FILE) | CENBLKGRP2010_MAR11 | U.S. Census Bureau | STATE | 20110317 | 2011-05-30 | Download View Details |
| 2010 U.S. CENSUS TRACTS IN FLORIDA (FILE GEODATABASE WITH ASSOCIATED REDISTRICTING TABLES) | CENTRACT2010_SF_MAR11 | U.S. Census Bureau | STATE | 2010 | 2011-05-30 | Download View Details |
| 2010 U.S. CENSUS BLOCKS IN FLORIDA (FILE GEODATABASE WITH ASSOCIATED REDISTRICTING TABLES) | CENBLK2010_SF_MAR11 | U.S. Census Bureau | STATE | 2010 | 2011-05-30 | Download View Details |
| 2010 U.S. CENSUS BLOCK GROUPS IN FLORIDA (FILE GEODATABASE WITH ASSOCIATED REDISTRICTING TABLES) | CENBLKGRP2010_SF_MAR11 | U.S. Census Bureau | STATE | 2010 | 2011-05-30 | Download View Details |
| US CENSUS BLOCKS IN FLORIDA - 2000 (2009 SPATIAL UPDATE) | CENBLK2000_MAY09 | U.S. Census Bureau | STATE | 2009 | 2011-01-17 | Download View Details |
| US CENSUS BLOCK GROUPS IN FLORIDA - 2000 (2009 SPATIAL UPDATE) | BLKGRP2000_MAY09 | U.S. Census Bureau | STATE | 2009 | 2011-01-17 | Download View Details |

Done Get inspired at yogajournal.com

FGDL Data Dates

- PUB Date – Corresponds to the FGDC metadata ‘Publication Date’.
- FGDL Added – Date the layer was added to FGDL for distribution.
- PUBLISHER – Online linkage to computer resource that contains the dataset.



- FGDLAQDATE – Field added to data layer that refers to ‘Date downloaded from source’.



Parcel Derived Layers

- Generalized Land Use (LU_GEN_)
- Parcels Dissolved By Decade Of Actual Year Built (YB_DECADES_)
- Statewide Layers derived from DOR Use Code (PAR_)

GeoPlan Center Sociocultural Layers

- GC_CULTURECENTER_SEP08
- GC_FIRESTAT_FEB08
- GC_LAWENFORCE_FEB08
- GC_SOCIALSERVICE_MAY08
- GC_PARKS_MAR09
- GC_CORRECTIONAL_JUL11
- GC_CIVICCENTER_JUN08
- GC_SCHOOLS_JUL08
- GC_HOTELS_JUN11
- GC_CEMETERY_SEP08
- GC_COMMUNITYCENTER_SEP08
- GC_HOA_JAN11
- GC_ASSISTED_HOUSING_FEB09
- GC_RELIGION_MAR09
- GC_HEALTH_JUL09
- GC_GOVBUILD_JUL09
- GC_MOBILEHOMES_2009
- GC_VETERANS_DEC09
- GC_DAYCARE_OCT10
- GC_LASERS_NOV10
- GC_HOSPITALS_MAY11

Point Layer Fields

Attributes of GC_SCHOOLS

| LONG_DD | LAT_DD | USNG_FL_1K | SOURCE | DESCRIPT * | FGDLAQDATE |
|------------|-----------|------------|---------------|---------------------------------|------------|
| -81.325914 | 28.527129 | 17RMM 6855 | ORANGE COUNTY | DOVER SHORES ELEMENTARY SCHOOL | 7/10/2008 |
| -81.295187 | 28.525296 | 17RMM 7155 | ORANGE COUNTY | CHICKASAW ELEMENTARY SCHOOL | 7/10/2008 |
| -81.448188 | 28.537517 | 17RMM 5656 | DTS | MILLS CHILD DEVELOPMENT CENTER | 7/10/2008 |
| -81.411968 | 28.531351 | 17RMM 5956 | DTS | MT. SINAI SEVENTH-DAY ADVENTIST | 7/10/2008 |
| -81.030488 | 29.22772 | 17RMN 9733 | FIELD DATA | FAITH ACADEMY & PRESCHOOL | 1/17/2007 |
| -81.361315 | 28.638094 | 17RMM 6467 | COUNTY | SUMMIT CHARTER | 1/17/2007 |
| -81.240211 | 29.552484 | 17RMN 7669 | FIELD DATA | UNNAMED SCHOOL | 1/17/2007 |
| -80.915771 | 29.006254 | 17RNN 0808 | FIELD DATA | ST PAULS EPISCOPAL PRE-SCHOOL | 1/17/2007 |
| -81.455351 | 28.576313 | 17RMM 5561 | FGDL (2005) | VICTORY PREP CHRISTIAN ACADEMY | 1/17/2007 |
| -81.376644 | 28.538092 | 17RMM 6356 | COUNTY | PASSPORT CHARTER | 1/17/2007 |

Record: 7787 Show: All Selected Records (0 out of 7787 Selected) Options



FGDL Mailing List

- To join the FGDL mailing list email:
Majordomo@geoplan.ufl.edu
- In the body of the email include:
“subscribe fgdl-l”



Questions or Comments:
data@fla-etat.org

Brief Survey:

www.fgdl.org/survey