

# Appendix C

## Information Systems Development Methodology for the Environmental Screening Tool

**Appendix C**

EST Schema Diagrams Introduction

Schema Design Diagrams (07/31/2010)

Appendix C Entity Relationship Diagrams (Updated 6/30/2010)

## C.1 EST Schema Diagrams Introduction (Updated 6/30/2010)

The Entity Relationship (ER) diagrams for the Environmental Screening Tool (EST) (referred to as Schema Design Diagrams in the ISDM requirements) follow the Unified Modeling Language (UML) methodology. The ER diagrams include tables and foreign key relationships between tables.

The ER diagrams included in this documentation were generated using Oracle JDeveloper Studio Edition Version 10.1.3.3.0. The descriptions of the tables and foreign key relationships in Sections C.1 and C.2, respectively, are based on the Help documentation for Oracle JDeveloper Studio 11.1.1.2.0.

The ER diagram tables for the EST Secure Site are distributed in three diagrams titled Main, History, and Milestone. The Main Diagram includes all tables for storage of data, lookup tables, and association tables. The History Diagram includes history tables used to keep back-up of the data when records are deleted or modified by the user. The Milestone Diagram includes the milestone tables. A milestone table captures milestone versions of the original data for an individual record in the Main Table when the milestone package code is run. The Public Access Site diagram includes all tables required to support the Public Access Site.

To view the ER diagram tables for the EST Secure Site, open the PDF files named EST MAIN 2010, EST HISTORY 2010 and EST MILESTONES 2010. To view the Public Access Site diagram, open the PDF file named ETDM PUB MAIN 2010.

### C.1.1 Tables

Tables are represented on diagrams as rectangles containing the name of the table and information about table columns, including data type and length.

### C.1.2 Foreign Key Relationships

Foreign key relationships are shown between tables as solid lines, with the cardinality of the relationship being shown by the notations at the ends of the lines. The different types of cardinality are:

- 0...1 (Table A) to \* (Table B)

This cardinality represents tables where there is zero or one record in Table A that relates to zero or more records in Table B.

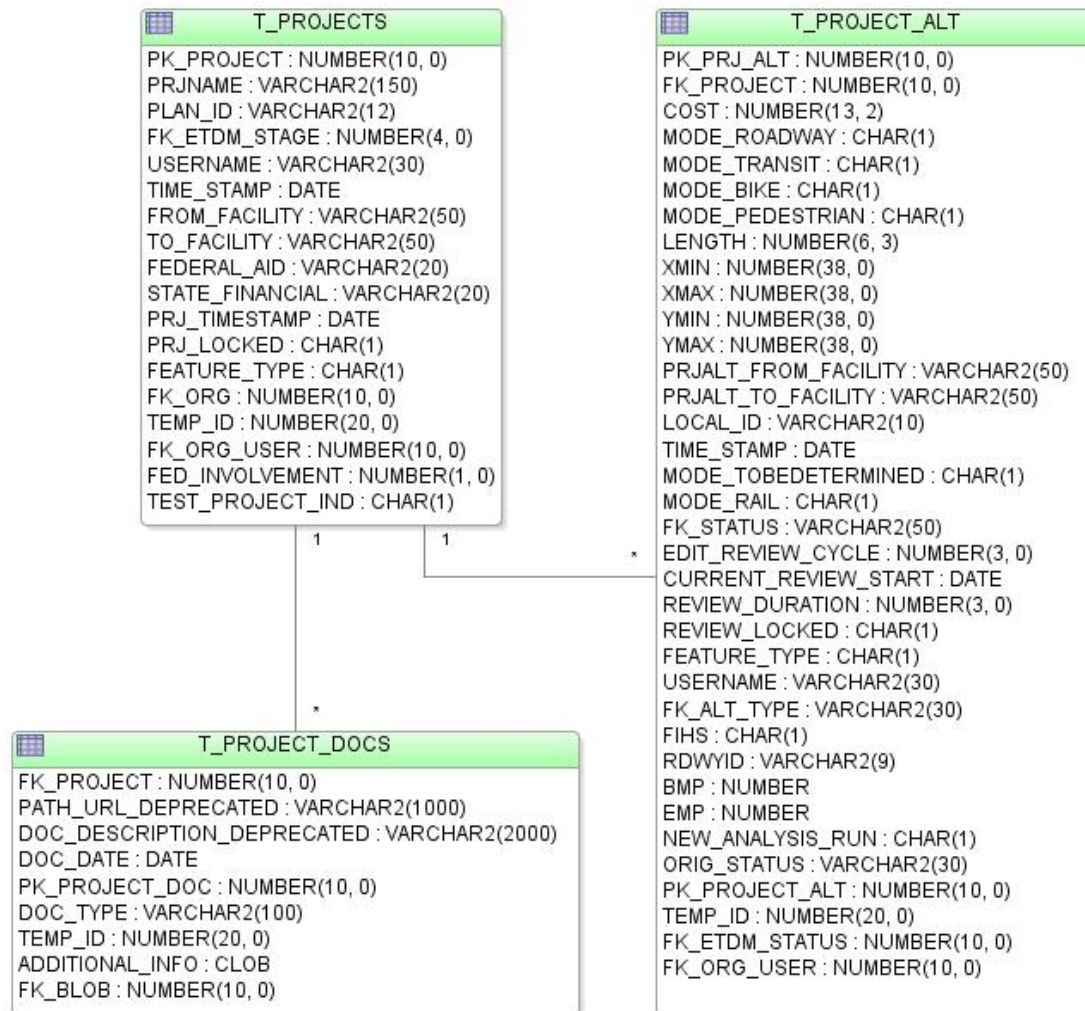
- 1 (Table A) to \* (Table B)

This cardinality represents tables where there is at most one record in Table A that is related to zero or more records in Table B.

- 1 (Table A) to 1 (Table B)

This cardinality represents tables where there is exactly one record in Table A that is related to exactly one record in Table B.

An example of the format and nomenclature used in the ER diagrams is provided below.



## C.2 Schema Design Diagrams

To view the ER diagram tables for the EST Secure Site, open the PDF files named EST MAIN 2010, EST HISTORY 2010 and EST MILESTONES 2010. To view the Public Access Site diagram, open the PDF file named ETDM PUB MAIN 2010.



**Environmental Screening Tool ISDM - Appendix C**







