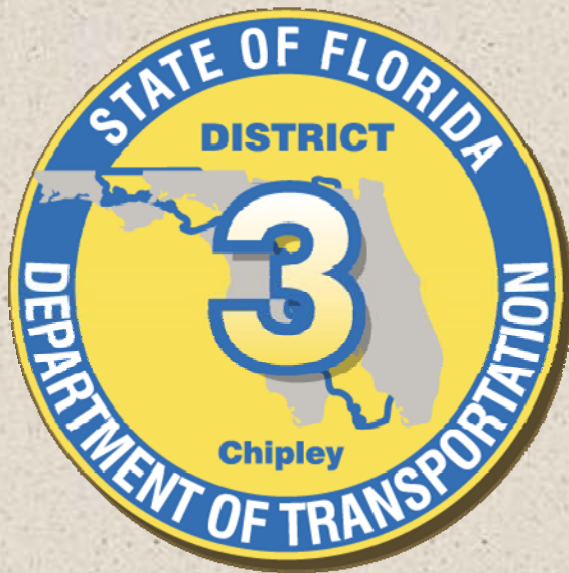
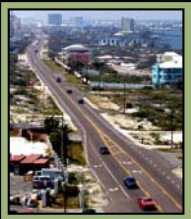


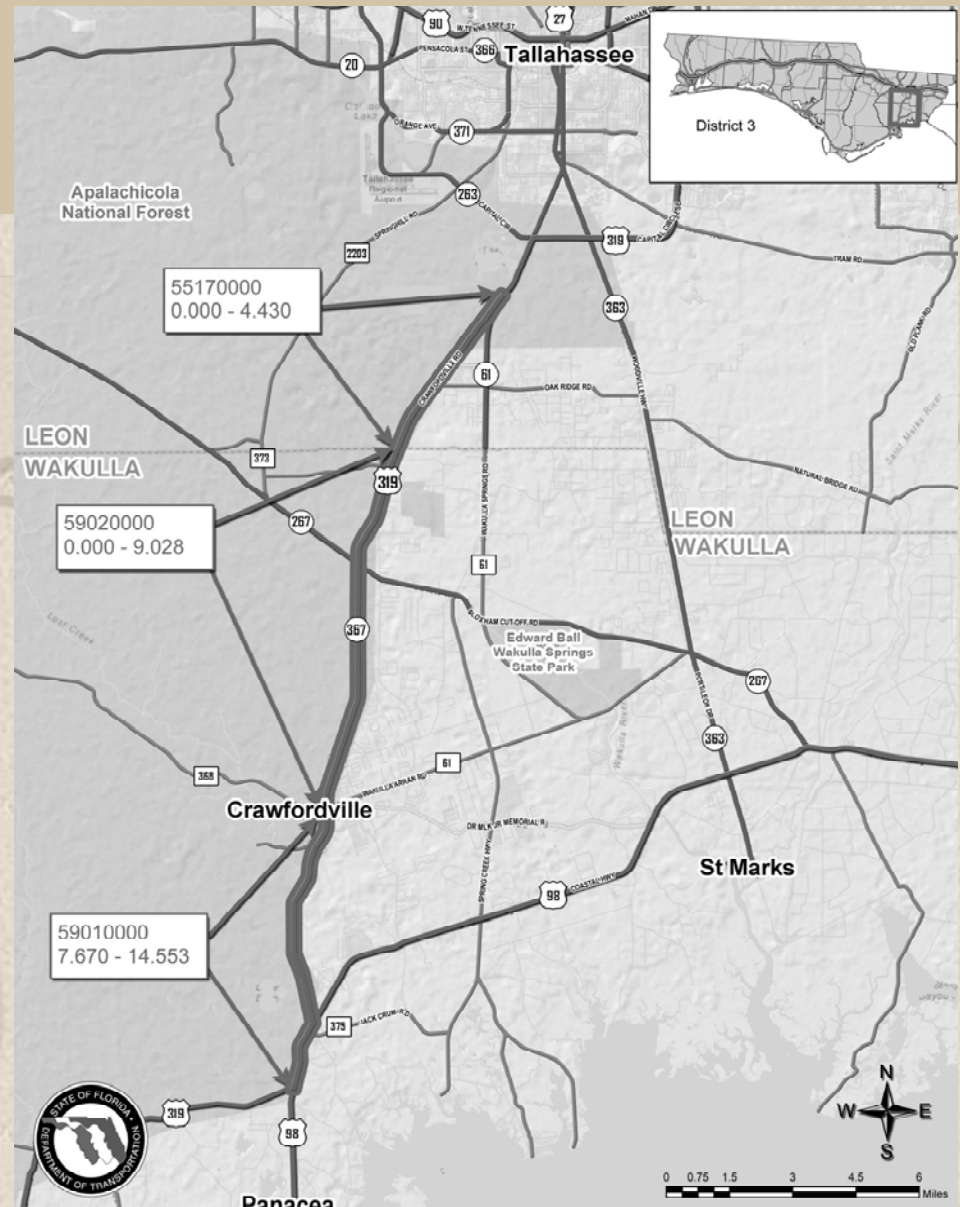
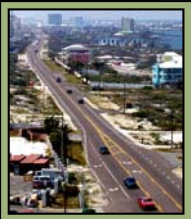
*Florida Department of
Transportation, District 3
Environmental Technical Advisory Team
(ETAT) Meeting
October 25, 2012*



etdm
**Efficient Transportation
Decision Making**

US 319/ Crawfordville Highway

- Wakulla and Leon Counties
- Limits: SR 61 (US 319/98) from SR 375 (US 319) to the Leon County Line; SR 61/369 (US 319) from the Wakulla County Line to the beginning of the four lane section at River Road
- Existing conditions: 2-lane highway
- Proposed improvements: Capacity improvements and reversible managed lanes
- FDOT PM: Peggy Kelley

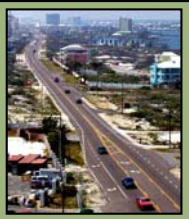


SR 30 (US 98) Elevated Roadway East to West of Tyndall Air Force Base Entrance

Tyndall Air Force Base Bay County, Florida

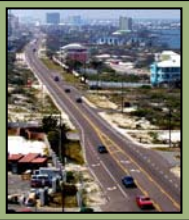
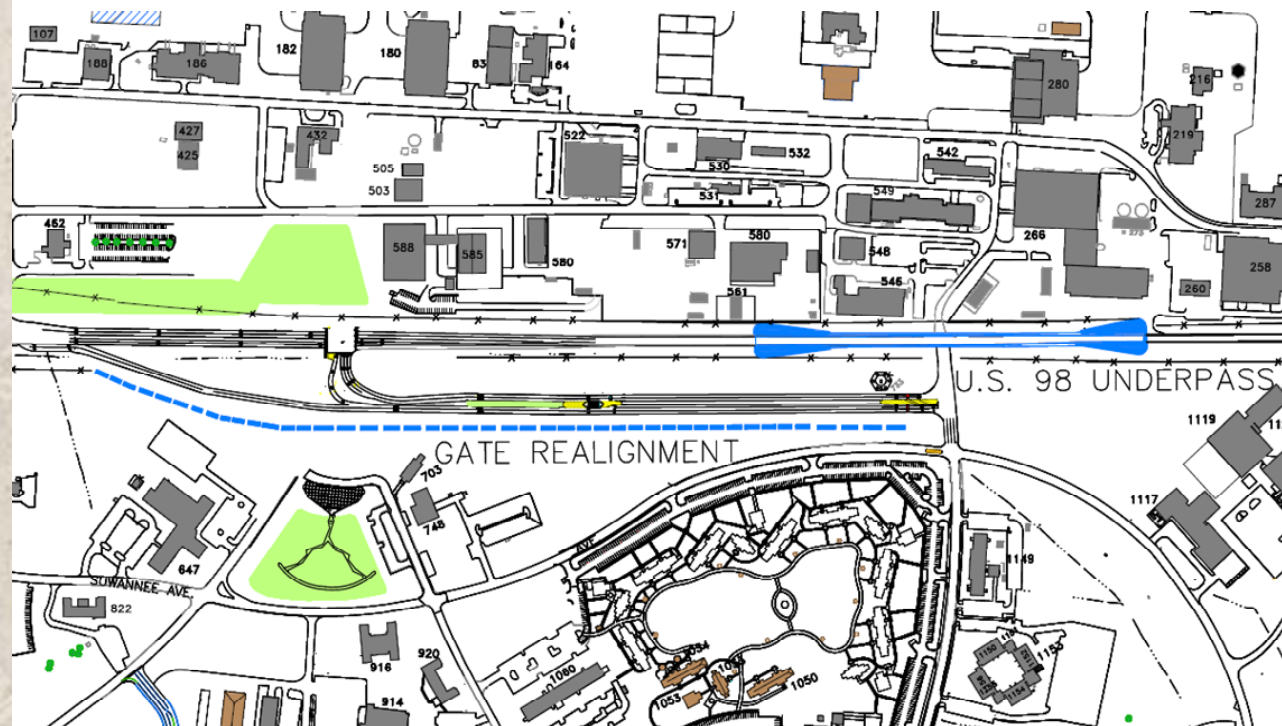


- Bay County
- Limits: None identified, but will be at or near the main base entrance on US 98
- Proposed improvements: Construct an overpass on US 98 to allow the free flow of traffic across Tyndall AFB
- FDOT PM: Alan Vann



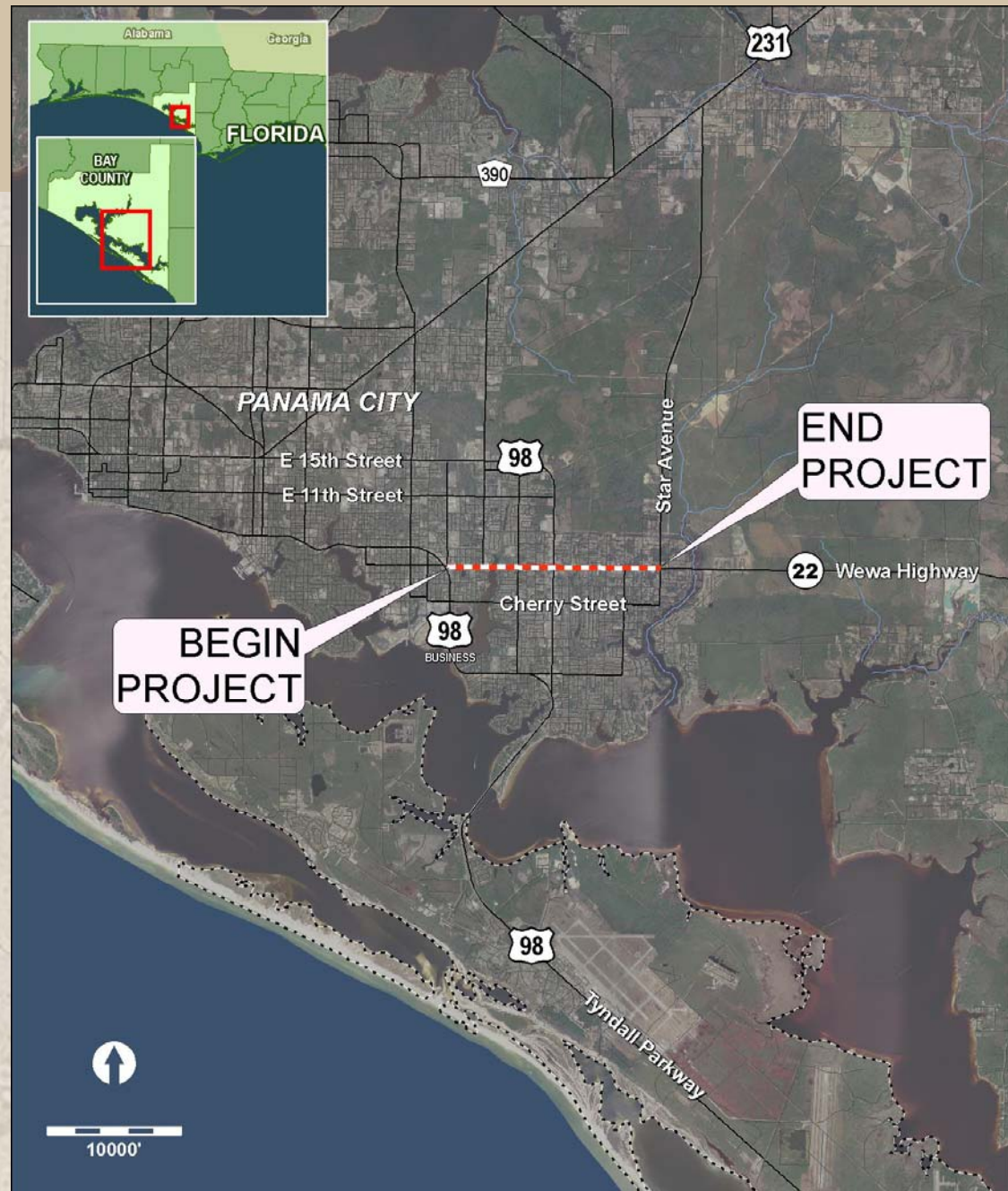
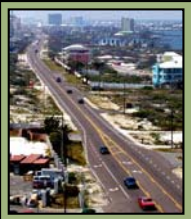
SR 30 (US 98) Elevated Roadway East to West of Tyndall Air Force Base Entrance

Project Scope

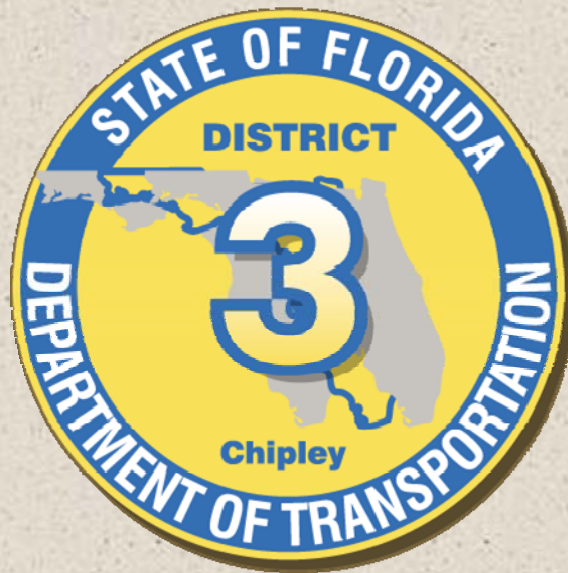


Wewa Highway/ SR 22

- Bay County
- Limits: Business US 98 to Starr Avenue (CR 2315)
- FDOT PM: Ray La Fontaine



Questions??



etdm
**Efficient Transportation
Decision Making**

