



SR 87 Connector

October 25, 2012

Project Development & Environment Study

From SR 87S at US 90 to SR 87N

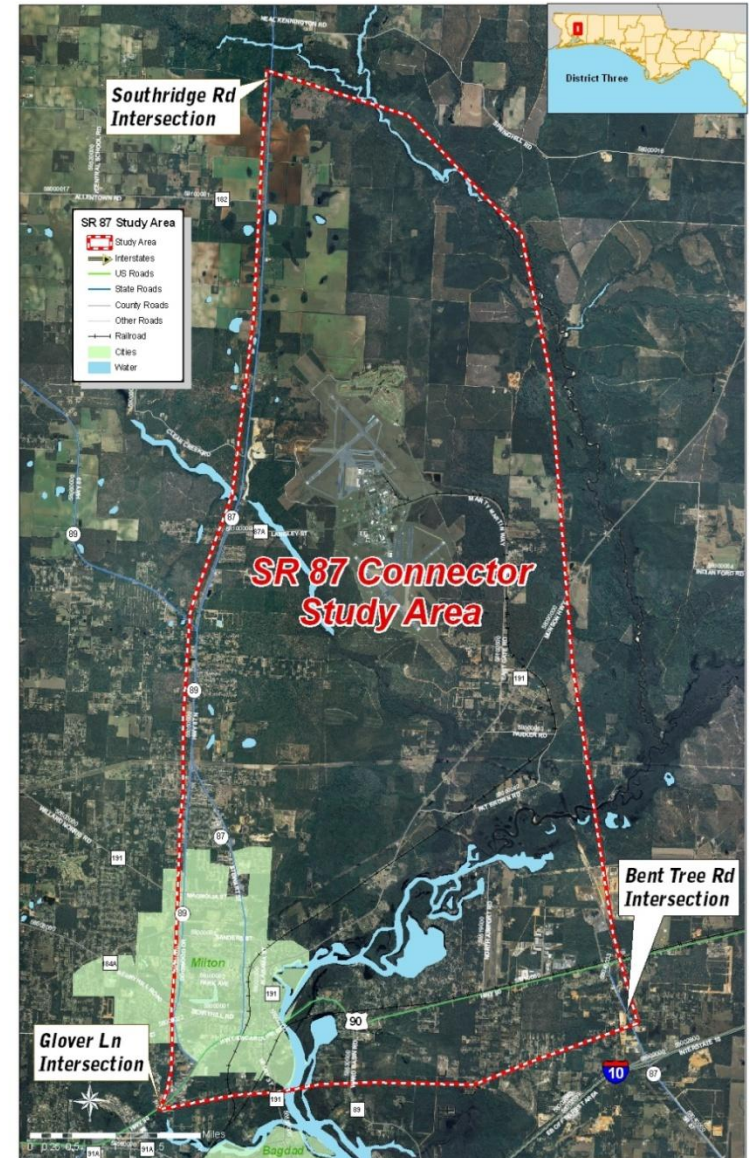




SR 87 Connector PD&E Study

Project Limits

- From SR 87S at US 90 to SR 87N at Southridge Road
- Functional Classification
 - Rural Minor Arterial
- Hurricane Evacuation Route
- Congestion Relief to US 90
- Connectivity
- Economic Development





SR 87 Connector PD&E Study

Purpose and Need

1. Provide a **direct connection** between SR 87S and SR 87N as an alternative to the existing connection via US 90.
2. **Improve hurricane evacuation** avoiding the need to go through the City of Milton.
3. Improve mobility within the **regional transportation network** by providing new connections to existing and future transportation routes consistent with the Florida/Alabama LRTP.
4. Enhance connectivity for more efficient operation of the **Whiting Field Naval Air Station** by providing a more direct route to I-10.
5. Improve **multi-modalism** for the region.
6. Enhance **economic development** by more effectively serving the Santa Rosa County/Whiting Field Industrial Park.



SR 87 Connector PD&E Study

Project Scope

Three Phases of Analysis

- 1. ETDM**
- 2. Corridor Analysis**
- 3. PD&E Study**



SR 87 Connector PD&E Study

Key Project Issues

- Environmental Issues
- Whiting Field NAS
- Criminal Justice Center/
Santa Rosa County Prison
- Historic Milton
- Engineering Issues
- Public Participation

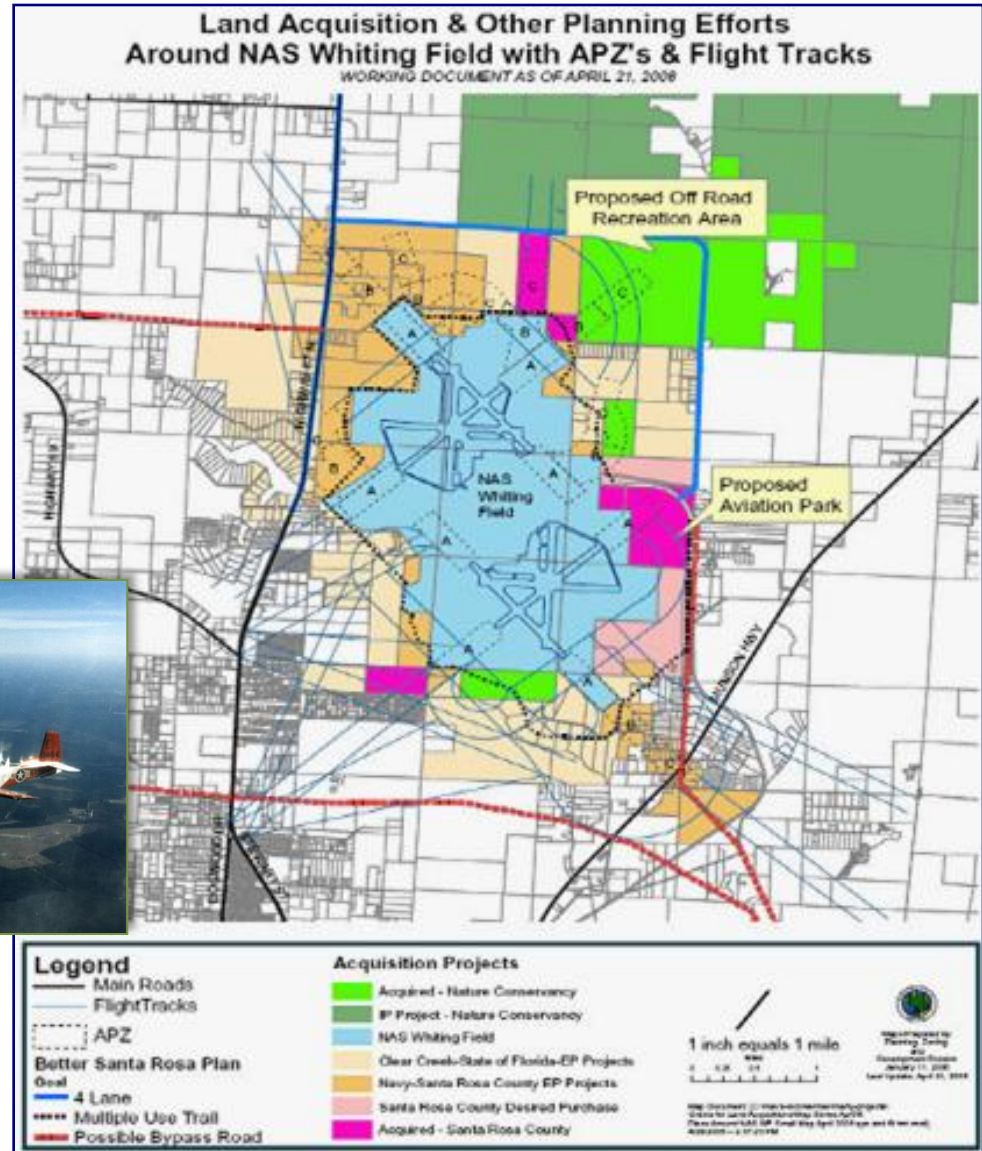




SR 87 Connector PD&E Study

Whiting Field Naval Air Station

- Improving Access
- Maintaining Security
- Air Protection Zones





SR 87 Connector PD&E Study

Engineering Issues

- Two-lane section
- Right-of-way for a future four-lane median separated section
- Bridging the river and wetlands
- Railroad Crossing at US 90/SR 87S
- Right-of-way Acquisition

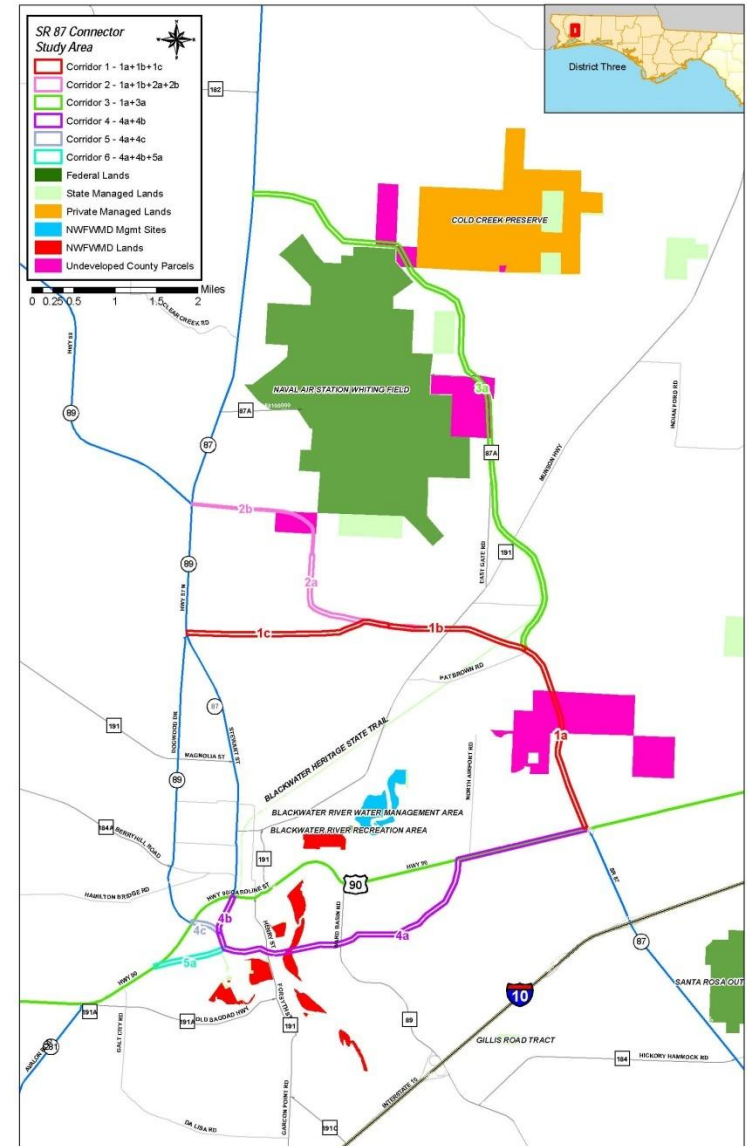




SR 87 Connector PD&E Study

Environmental

- Blackwater River Aquatic Preserve
- Coldwater Creek
- Clear Creek
- Blackwater River Heritage State Trail
- US 90 Historic Trail
- Florida Forever Lands

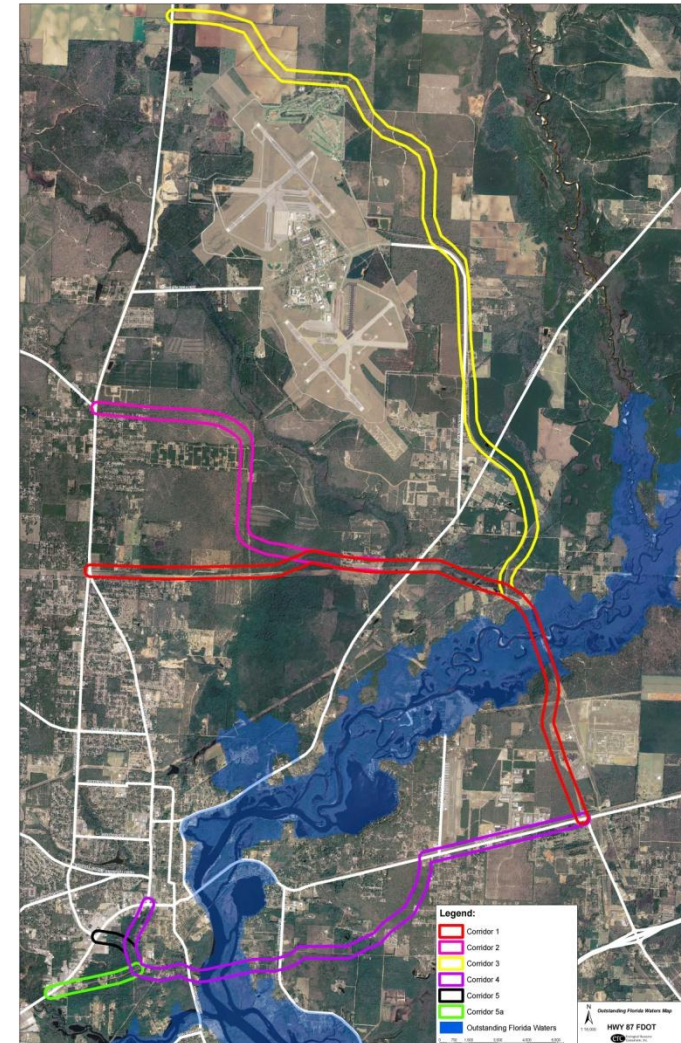




SR 87 Connector PD&E Study

Outstanding Florida Waters

- Blackwater River Aquatic Preserve
- Exceptional Recreational and Ecological Significance
- All Corridors cross Blackwater River either to north or west



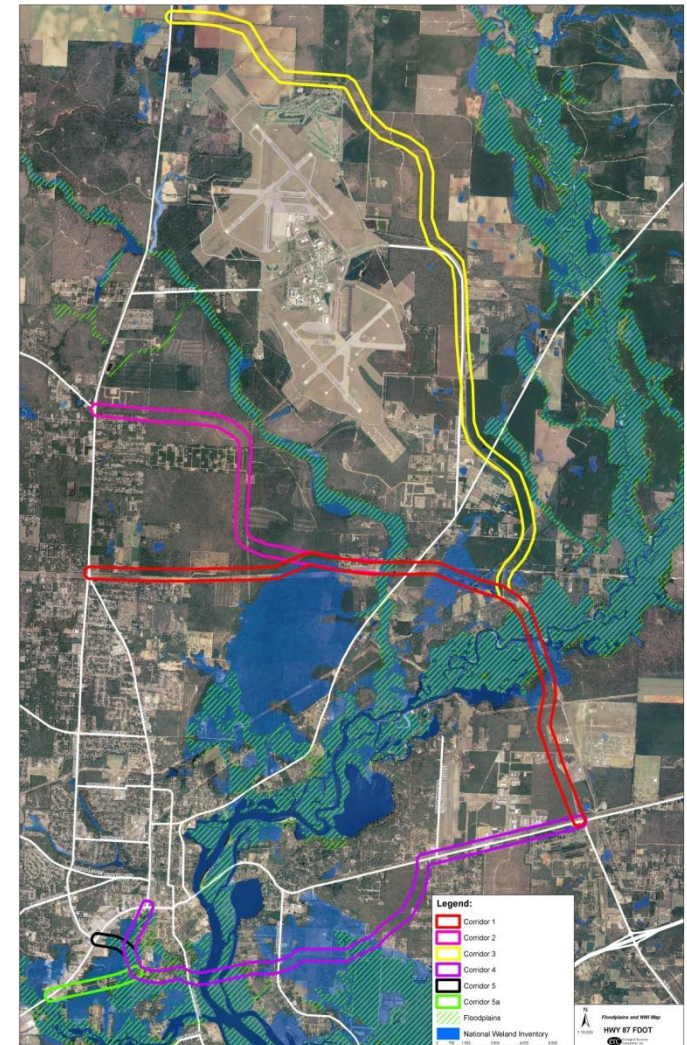


SR 87 Connector PD&E Study

Wetlands & Floodplains

- **Wetlands**
 - National Wetland Inventory
 - Florida Natural Areas Inventory (FNAI) Priorities
 - Evaluated for total impacts and percentage of total corridor
- **Floodplains**
 - FEMA flood zone data 'X' designated zones
 - FNAI Natural Floodplain

* Map to right depicts NWI and FNAI floodplain data





SR 87 Connector PD&E Study

Threatened & Endangered Species

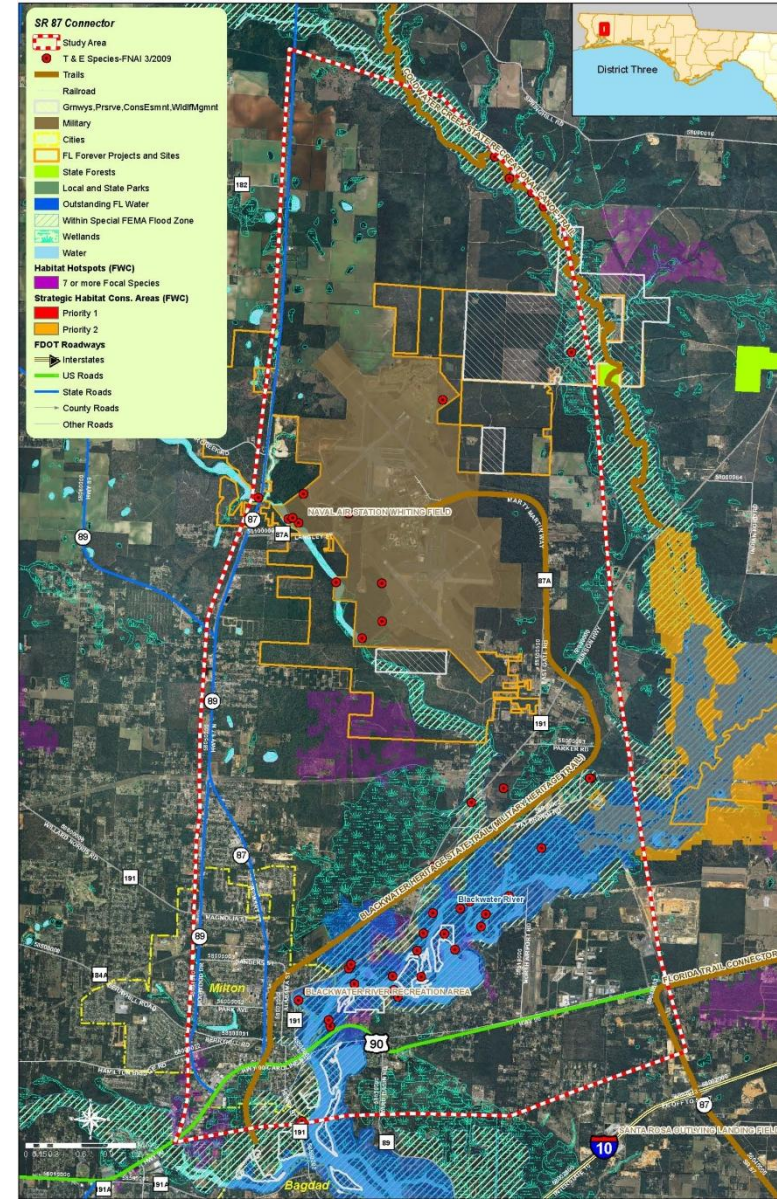
- Evaluated FNAI Element Occurrence data for Santa Rosa County (2009)
- Results
 - Most T/E Species associated with river and creek floodplains

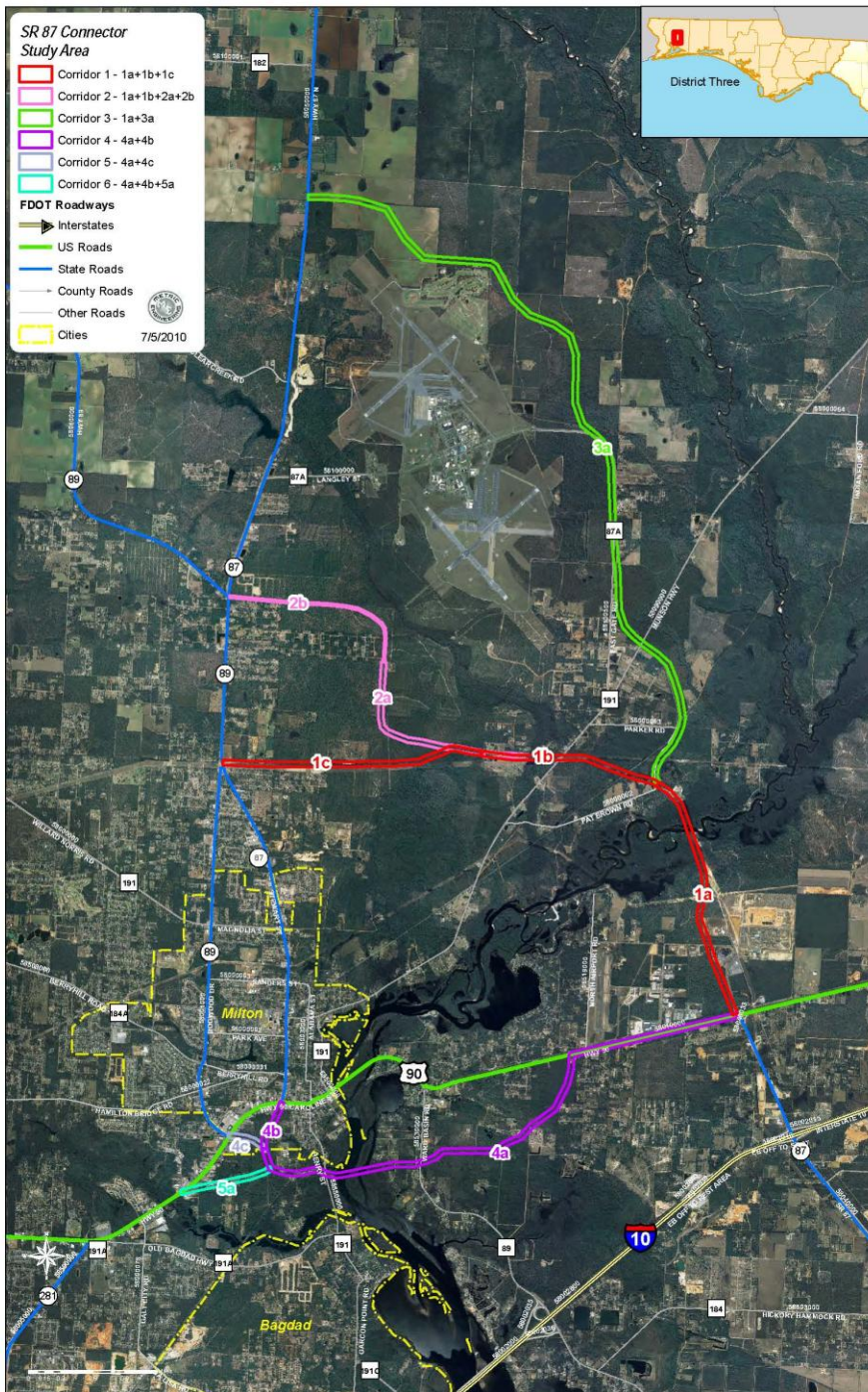


Reticulated Flatwoods Salamander



Gulf Sturgeon





SR 87

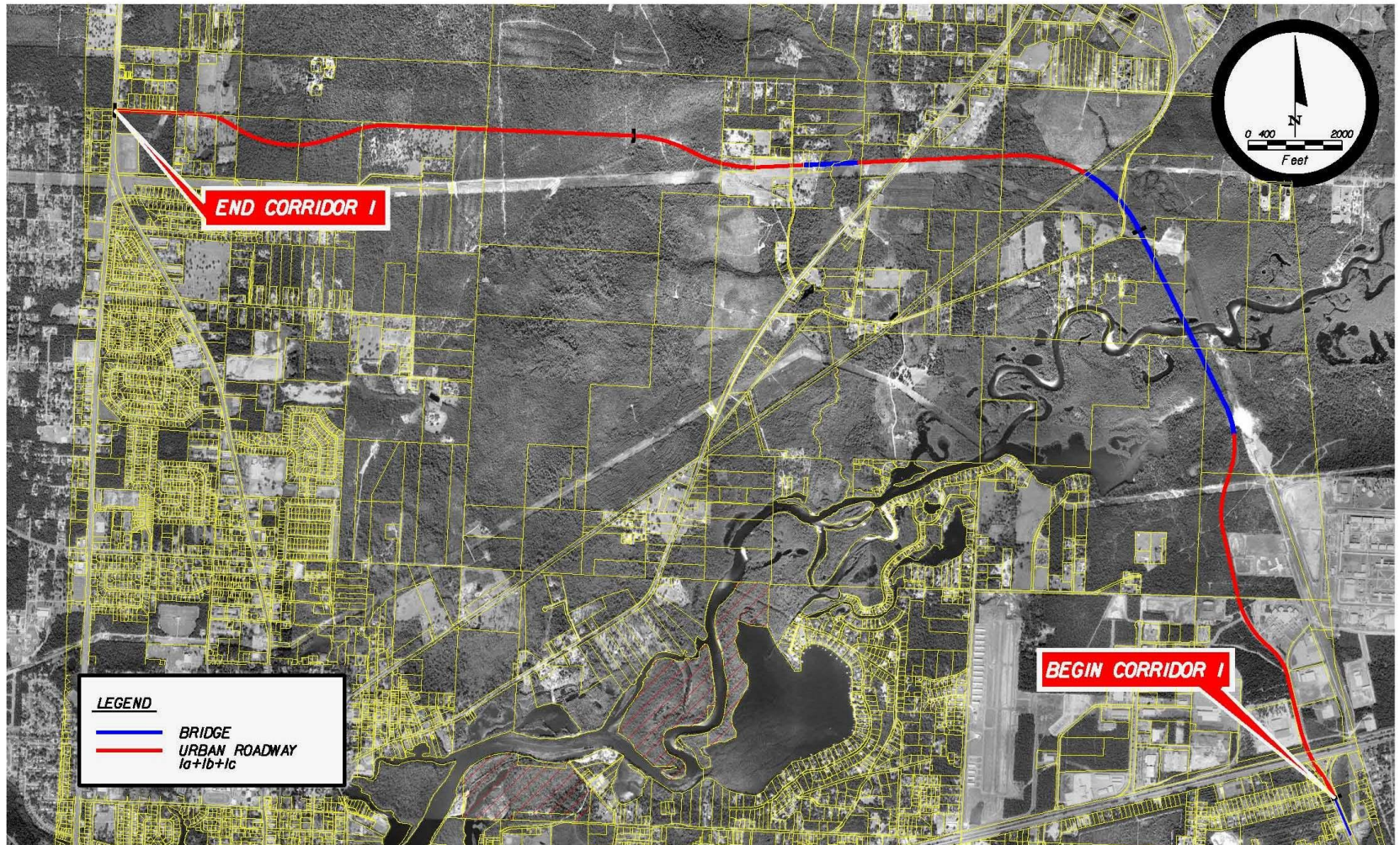
Connector

PD&E Study

Potential Corridors




SR 87 Connector PD&E Study



LEGEND

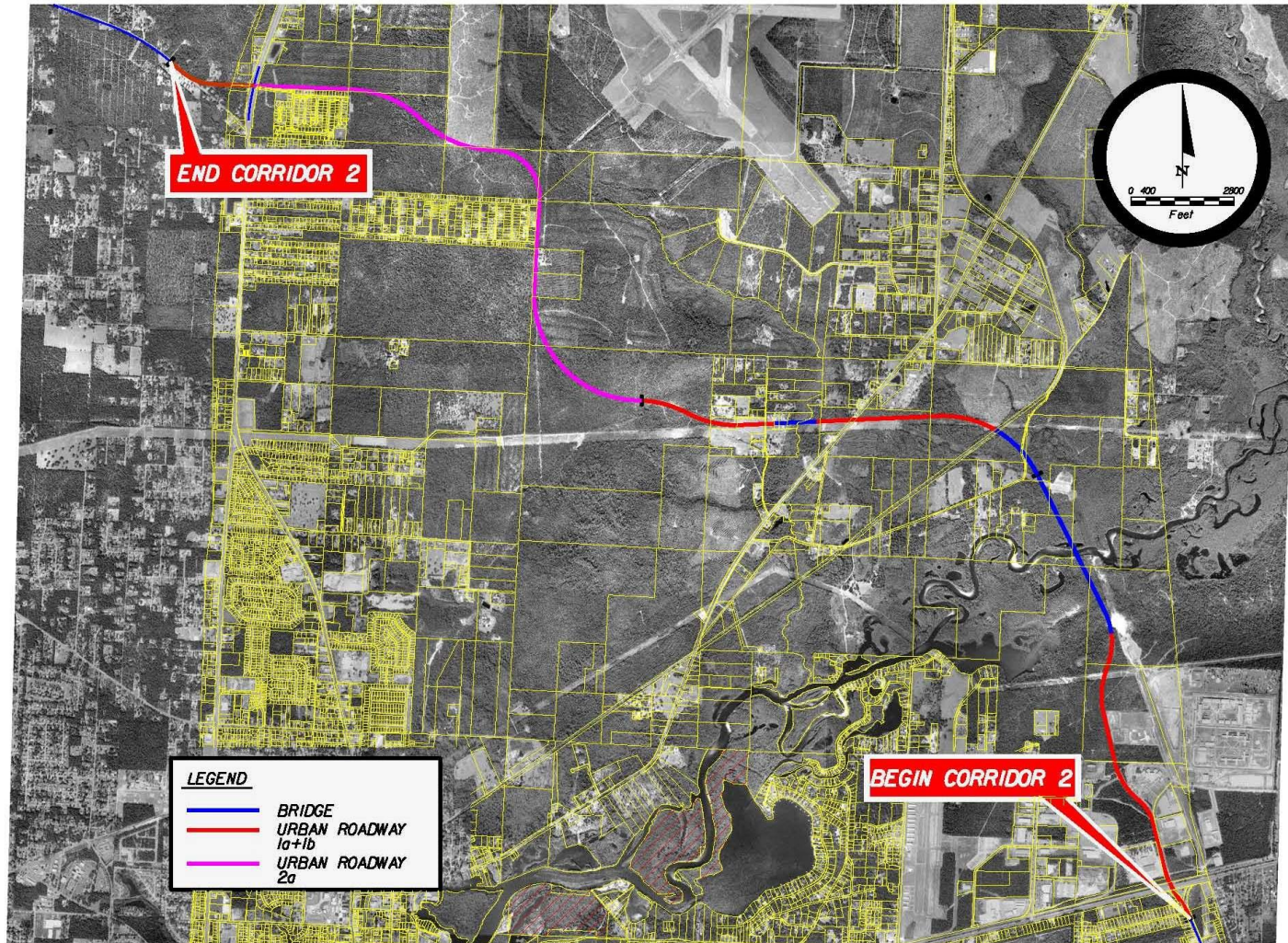
- BRIDGE
- URBAN ROADWAY
la+lb+lc


REVISIONS				 <p>C. BRIAN FULLER, P.E. # 48524 METRIC ENGINEERING, INC. 615 CRESCENT EXECUTIVE CT SUITE 624 LAKE MARY, FLORIDA 32746 TEL. (407) 844-1898 FAX. (407) 844-1921 FLORIDA CERT. NO. 59-0002294</p>	STATE OF FLORIDA DEPARTMENT OF TRANSPORTATION			CORRIDOR 1	FIGURE
DATE	DESCRIPTION	DATE	DESCRIPTION		ROAD NO.	COUNTY	FINANCIAL PROJECT ID		
					87	SANTA ROSA	4167483-22-01-02 4167484-22-01-02		

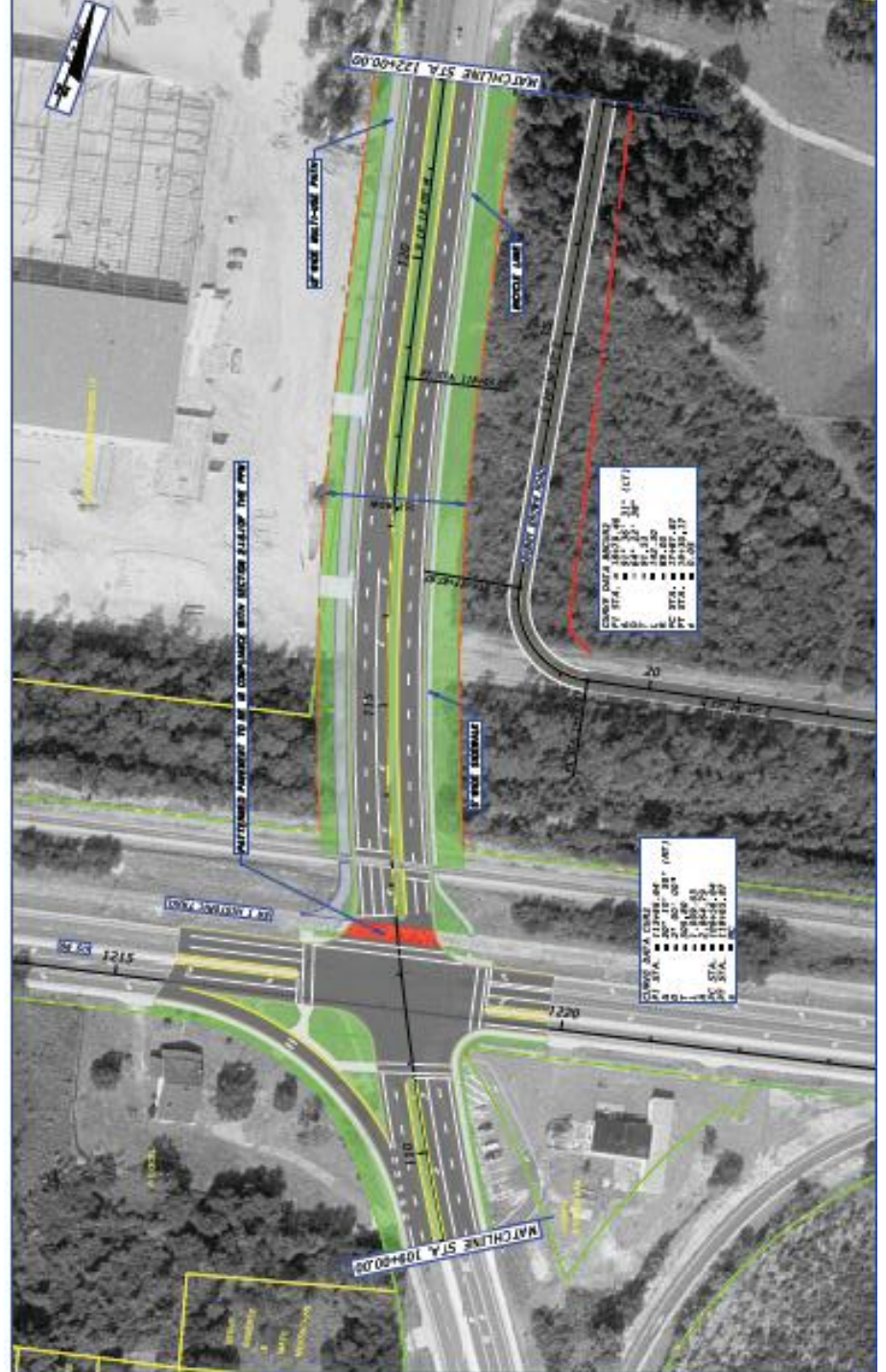
NOTICE: THE OFFICIAL RECORD OF THIS SHEET IS THE ELECTRONIC FILE SIGNED AND SEALED UNDER RULE 68B-23.004, F.A.C.



SR 87 Connector PD&E Study



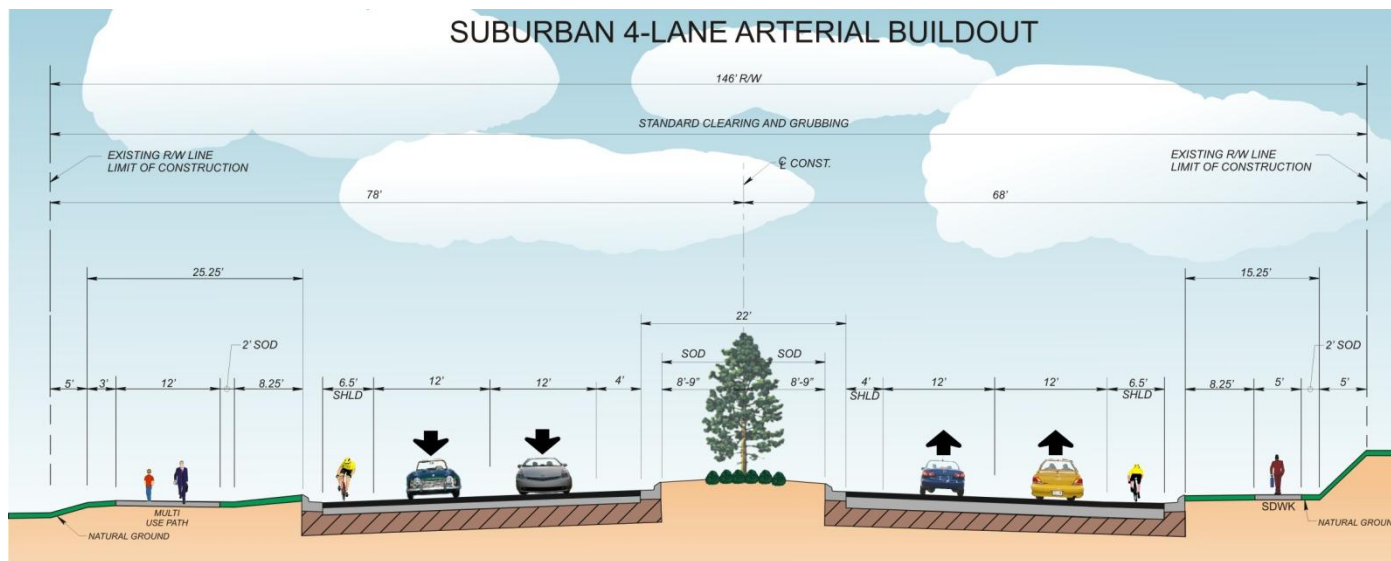
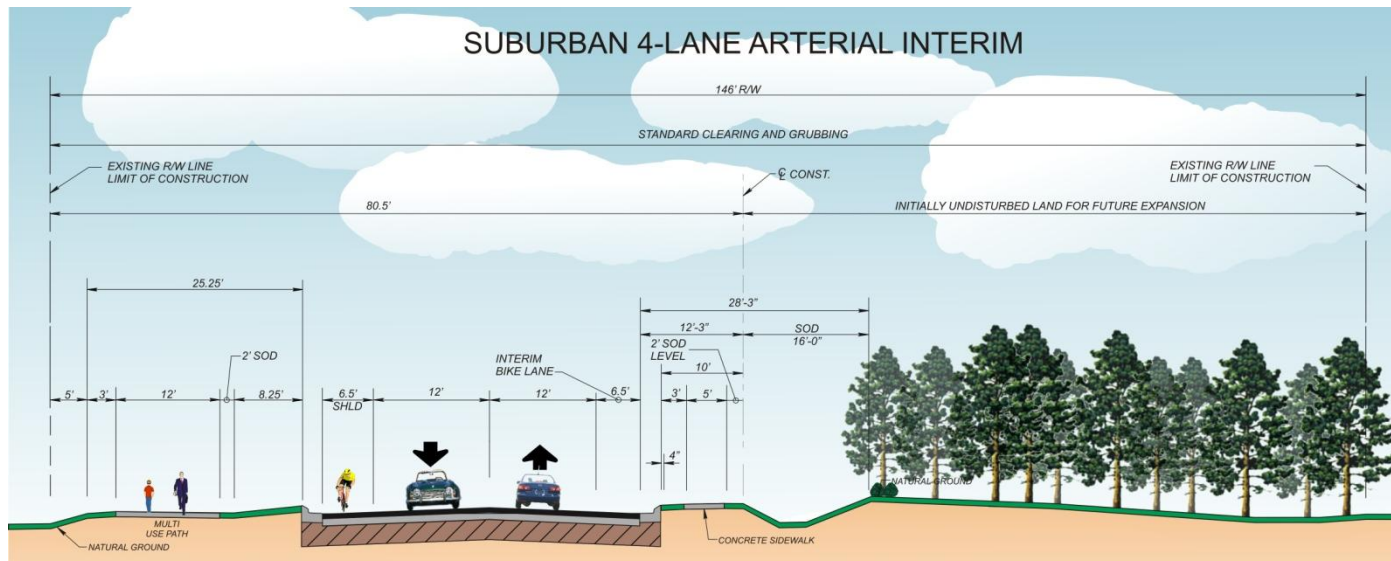
REVISIONS				 C. BRIAN FULLER, P.E. # 46524 METRIC ENGINEERING, INC. 615 CRESCENT EXECUTIVE CT SUITE 524 LAKE MARY, FLORIDA 32746 TEL. (407) 844-1888 FAX (407) 844-1821 FLORIDA CERT. NO. EB-0002294	STATE OF FLORIDA DEPARTMENT OF TRANSPORTATION			CORRIDOR 2	FIGURE
DATE	DESCRIPTION	DATE	DESCRIPTION		ROAD NO.	COUNTY	FINANCIAL PROJECT ID		
					87	SANTA ROSA	4167483-22-01-02 4167484-22-01-02		





SR 87 Connector PD&E Study

Typical Sections





SR 87 Connector PD&E Study

Challenges/Opportunities

➤ **Wetlands**

- Blackwater River OSW
- Adjacent Wetlands
- FEMA Floodway

➤ **T & E**

- Reticulated Salamander Habitat
- Gulf Sturgeon

➤ **Cultural Resources**

- SR 1 Historic Trail
- Blackwater Heritage Trail



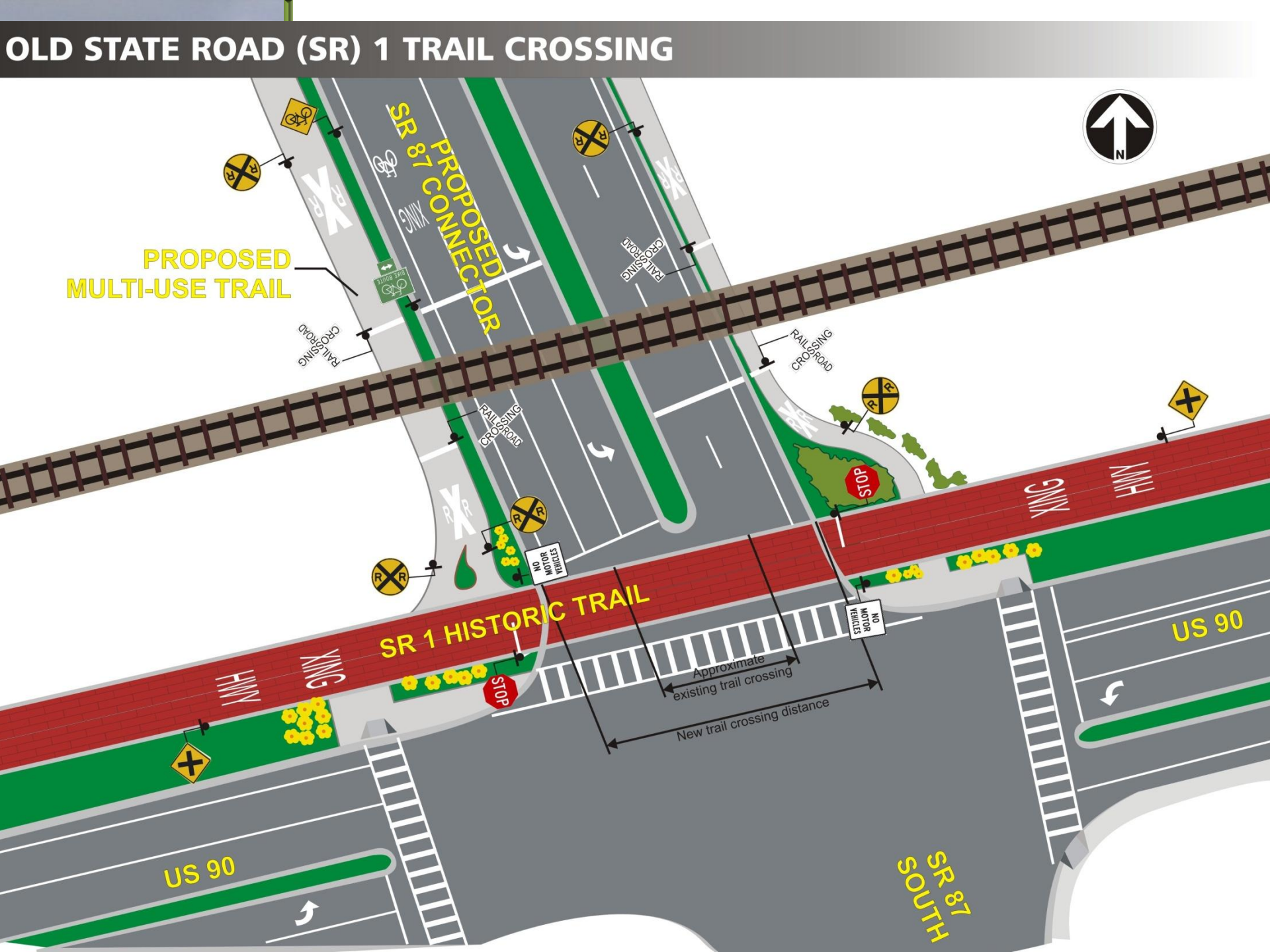
BHST



Reticulated Flatwoods Salamander



Gulf Sturgeon

[illegible]

OLD STATE ROAD (SR) 1 TRAIL CROSSING

The diagram illustrates the proposed multi-use trail crossing at the intersection of Old State Road (SR) 1 and US 90. Key features include:

- SR 87 CONNECTOR PROPOSED MULTI-USE TRAIL:** Indicated by yellow text and green arrows pointing towards the intersection.
- SR 1 HISTORIC TRAIL:** Shown as a red brick path running horizontally across the middle of the map.
- US 90:** The main road running vertically through the center of the map.
- RAILROAD CROSSING:** Multiple locations are marked with "X" symbols and labeled "RAILROAD CROSSING".
- Traffic Signs:** Various signs are shown, including "STOP", "NO MOTOR VEHICLES", and railroad advance warning signs (yellow diamonds with black "X" and "RR").
- Crossing Distances:** Two dimensions are indicated: "Approximate existing trail crossing" and "New trail crossing distance".
- North Arrow:** Located in the top right corner, pointing upwards.

OLD STATE ROAD (SR) 1 TRAIL CROSSING

PROPOSED MULTI-USE TRAIL

SR 87 SOUTH

SR 1 HISTORIC TRAIL

US 90

RAILROAD CROSSING

RAILROAD CROSSROAD

STOP

NO MOTOR VEHICLES

US 90

SR 87 SOUTH

Approximate existing trail crossing

New trail crossing distance

North Arrow

OLD STATE ROAD (SR) 1 TRAIL CROSSING

PROPOSED MULTI-USE TRAIL

SR 87 SOUTH

SR 1 HISTORIC TRAIL

US 90

RAILROAD CROSSING

RAILROAD CROSSROAD

STOP

NO MOTOR VEHICLES

US 90

SR 87 SOUTH

Approximate existing trail crossing

New trail crossing distance

North Arrow

OLD STATE ROAD (SR) 1 TRAIL CROSSING

PROPOSED MULTI-USE TRAIL

SR 87 SOUTH

SR 1 HISTORIC TRAIL

US 90

RAILROAD CROSSING

RAILROAD CROSSROAD

STOP

NO MOTOR VEHICLES

US 90

SR 87 SOUTH

Approximate existing trail crossing

New trail crossing distance

North Arrow

OLD STATE ROAD (SR) 1 TRAIL CROSSING

PROPOSED MULTI-USE TRAIL

SR 87 SOUTH

SR 1 HISTORIC TRAIL

US 90

RAILROAD CROSSING

RAILROAD CROSSROAD

STOP

NO MOTOR VEHICLES

US 90

SR 87 SOUTH

Approximate existing trail crossing

New trail crossing distance

North Arrow

OLD STATE ROAD (SR) 1 TRAIL CROSSING

PROPOSED MULTI-USE TRAIL

SR 87 SOUTH

SR 1 HISTORIC TRAIL

US 90

RAILROAD CROSSING

RAILROAD CROSSROAD

STOP

NO MOTOR VEHICLES

US 90

SR 87 SOUTH

Approximate existing trail crossing

New trail crossing distance

North Arrow

OLD STATE ROAD (SR) 1 TRAIL CROSSING

PROPOSED MULTI-USE TRAIL

SR 87 SOUTH

SR 1 HISTORIC TRAIL

US 90

RAILROAD CROSSING

RAILROAD CROSSROAD

STOP

NO MOTOR VEHICLES

US 90

SR 87 SOUTH

Approximate existing trail crossing

New trail crossing distance

North Arrow



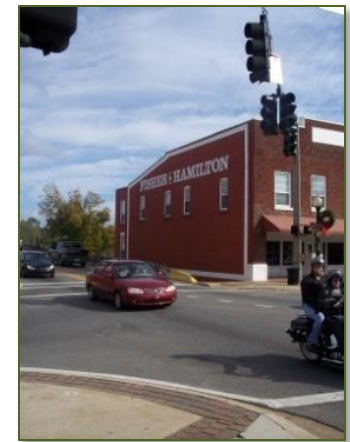
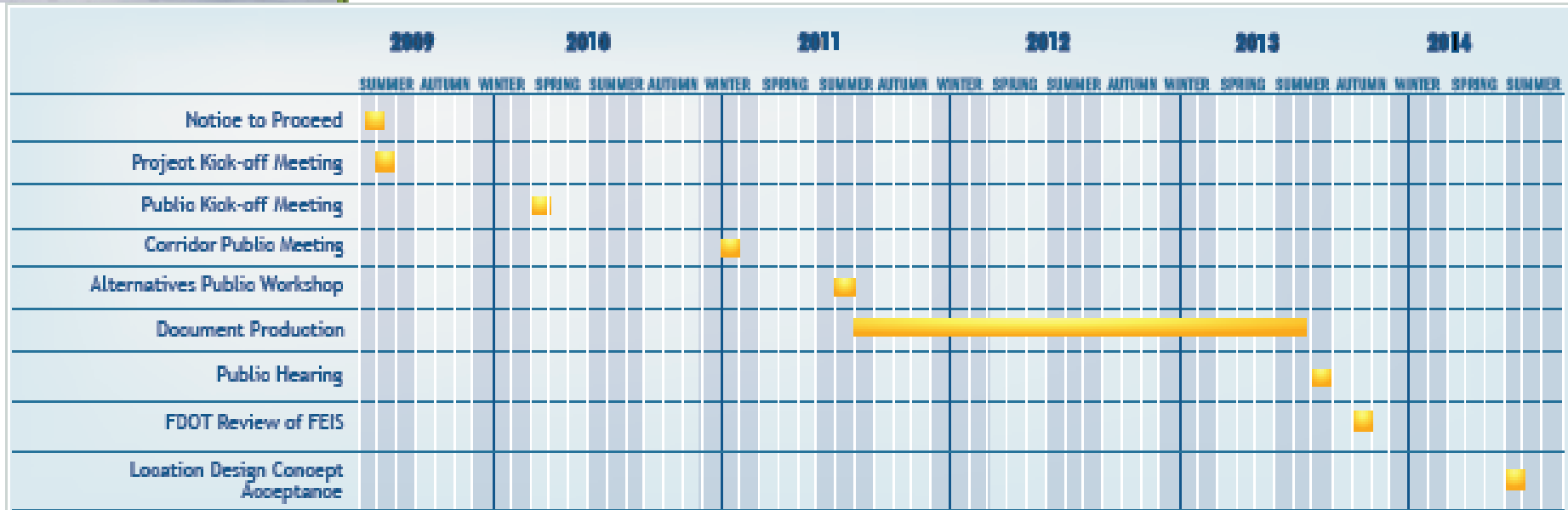
SR 87 Connector at Blackwater Heritage State Trail





SR 87 Connector PD&E Study

Project Time-Line





SR 87 Connector PD&E Study

Closing

We will be happy to answer any questions

We appreciate your input

THANK YOU!

