



SR 22 (WEWA HIGHWAY) PD&E STUDY

From US 98 Business to Star Avenue
Bay County

SR 22 (Wewa Highway) PD&E Study



SR 22 (Wewa Highway) PD&E Study



PROJECT HISTORY

- ▣ April 2013 – Start of PD&E Study
- ▣ June 2013 – Public Kickoff Meeting
- ▣ Fall 2013 – ETDM
- ▣ Class of Action – Type 2 CE

SR 22 (Wewa Highway) PD&E Study

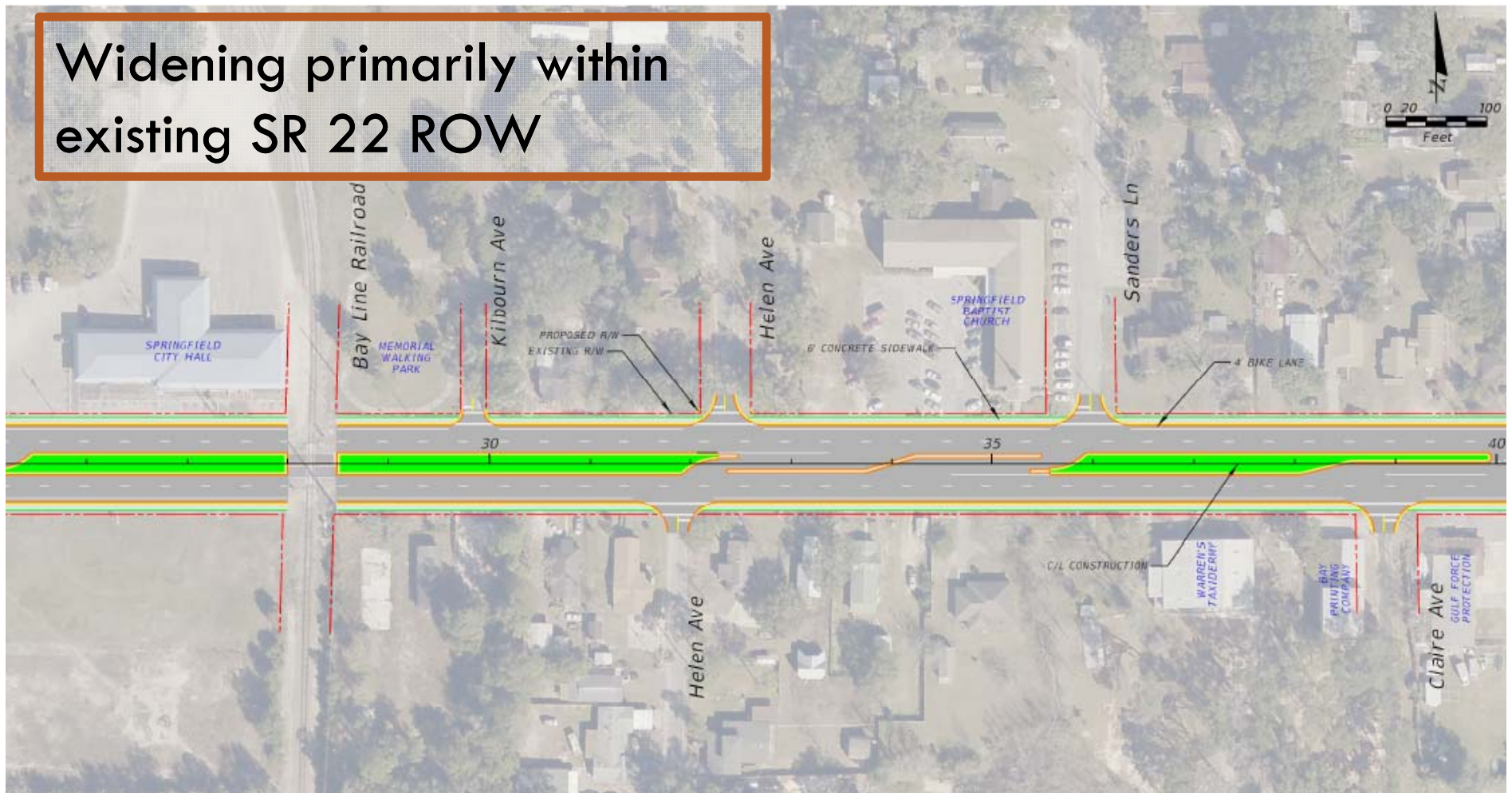


PROJECT HIGHLIGHTS

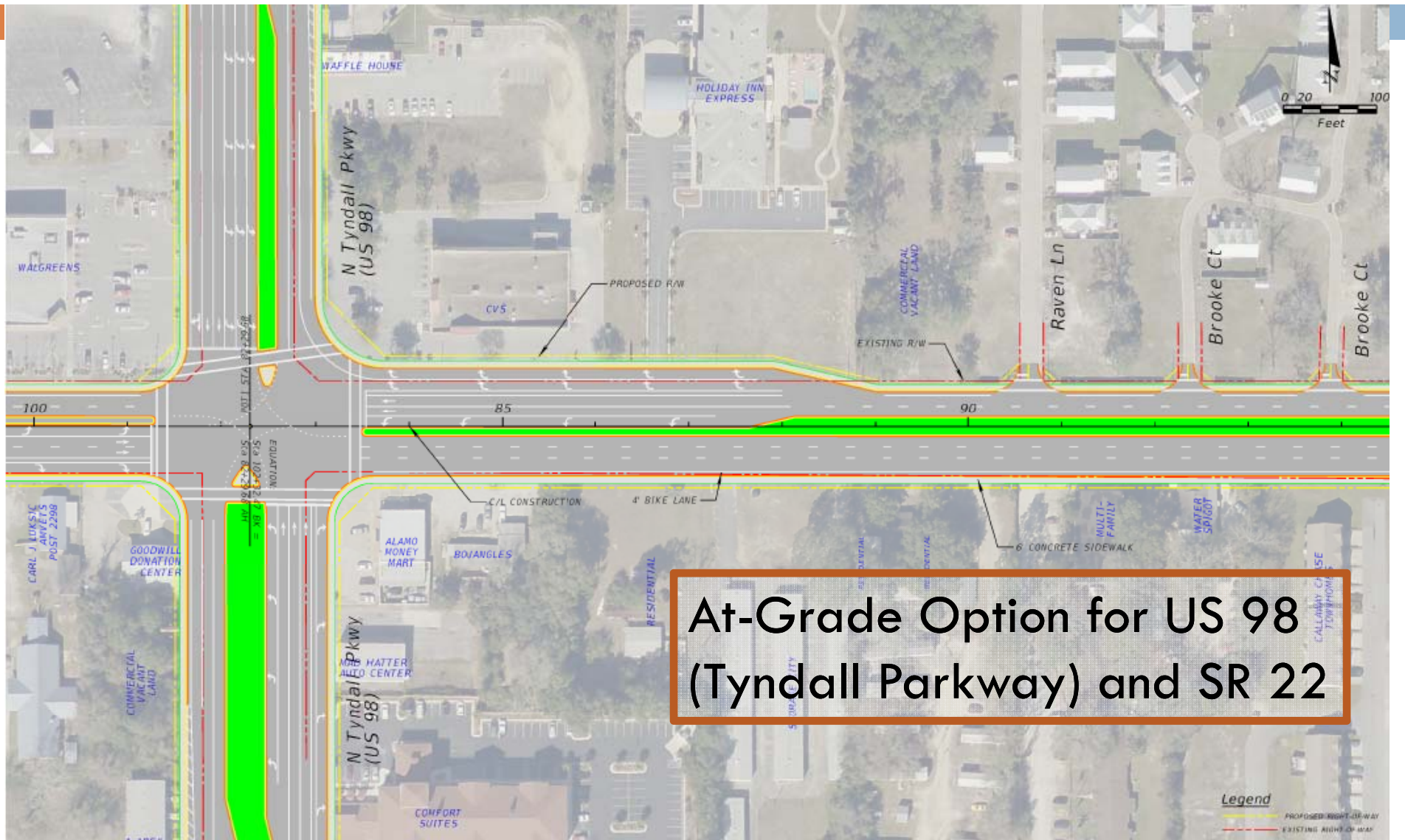
- ▣ Capacity improvements needed in both segments
- ▣ Most improvements can be made within existing SR 22 ROW
- ▣ At-grade and grade-separated options considered at US 98 (Tyndall Parkway) and SR 22

SR 22 (Wewa Highway) PD&E Study

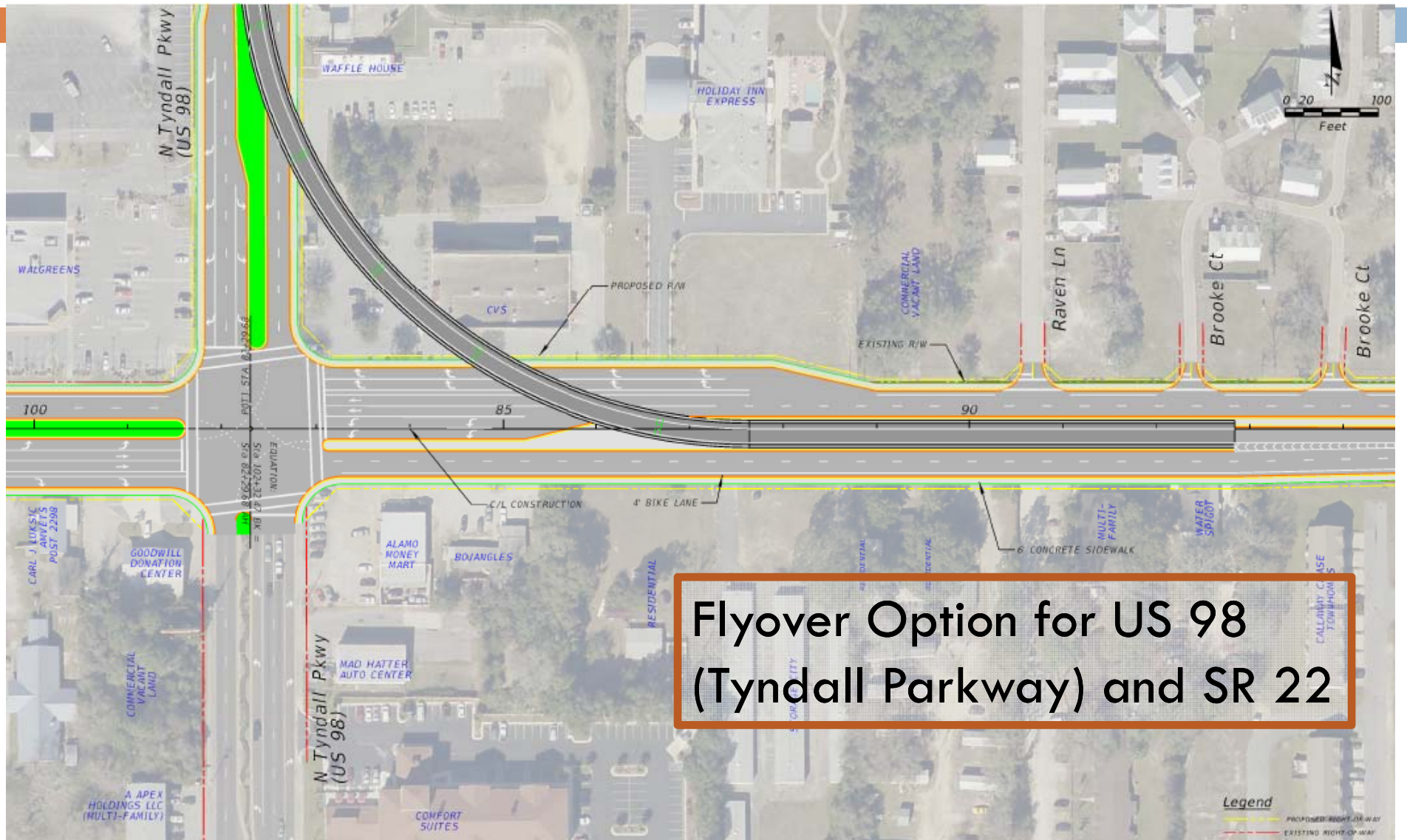
Widening primarily within
existing SR 22 ROW



SR 22 (Wewa Highway) PD&E Study



SR 22 (Wewa Highway) PD&E Study



Flyover Option for US 98
(Tyndall Parkway) and SR 22

SR 22 (Wewa Highway) PD&E Study



PROJECT SCHEDULE

- ▣ April 29, 2014 – Alternatives Public Meeting
 - Springfield Community Center (5:00-6:00 PM)
- ▣ Fall 2014 – Public Hearing
- ▣ Early 2015 – LDCA

SR 22 (Wewa Highway) PD&E Study



PROJECT CONTACT

Ray La Fontaine

FDOT Project Manager

850-330-1507

ray.lafontaine@dot.state.fl.us