



## *FDOT DISTRICT 3 2014 ET&T MEETING*

# West Bay Parkway Segment 1 & 2 PD&E Studies





# *WEST BAY PARKWAY PD&E STUDIES*

## *PROJECT LOCATION*



*Efficient Transportation  
Decision Making*





# *WEST BAY PARKWAY PD&E STUDIES*

## *PROJECT LOCATION*



West Bay Parkway Segment 1 PD&E - Environmental Impact Statement

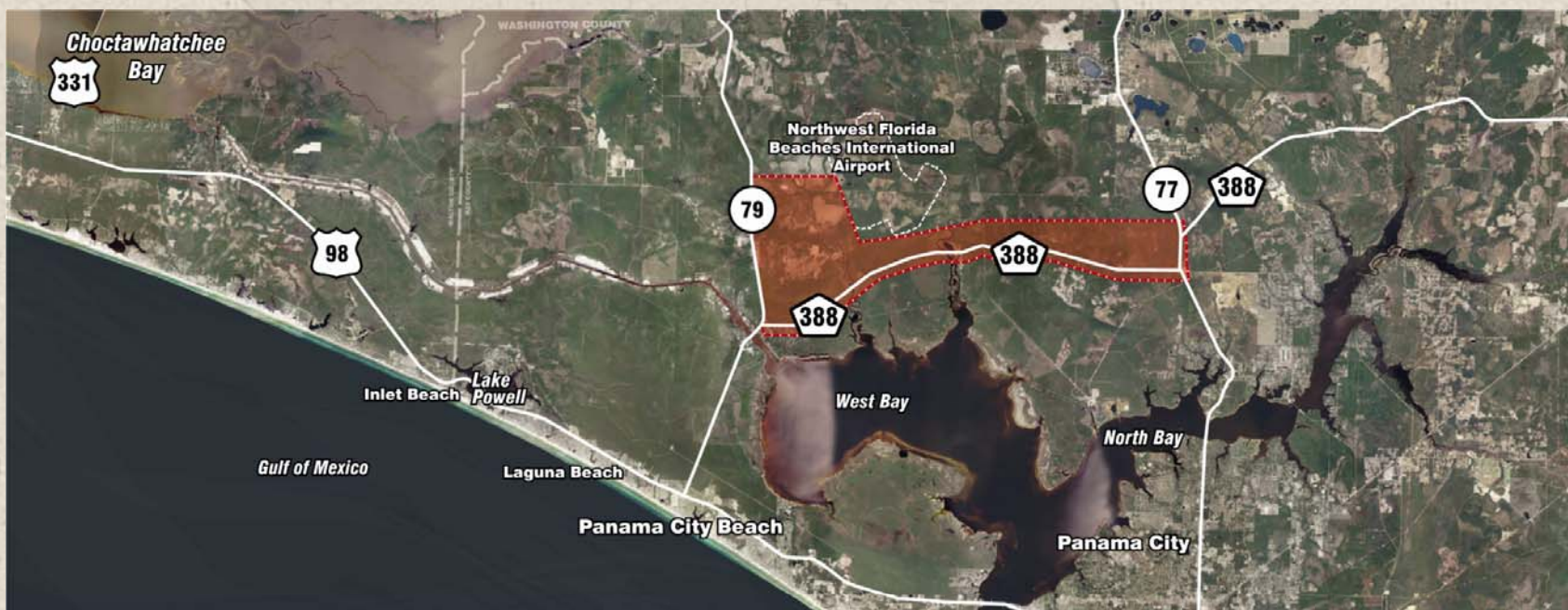
Efficient Transportation  
Decision Making





# *WEST BAY PARKWAY PD&E STUDIES*

## *PROJECT LOCATION*



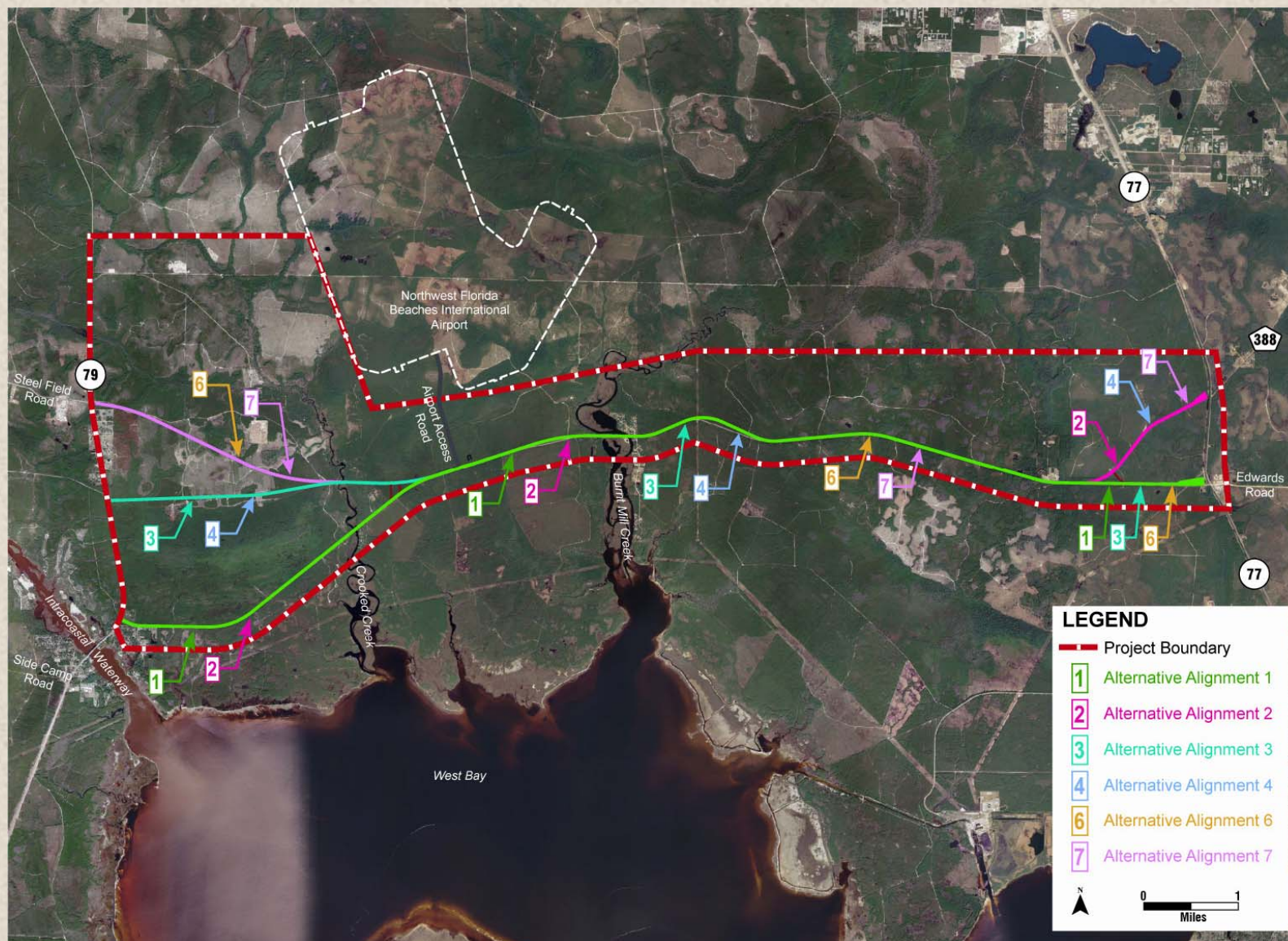
West Bay Parkway Segment 2 - Environmental Assessment





# WEST BAY PARKWAY - SEGMENT 2

## ALTERNATIVES







# *WEST BAY PARKWAY – SEGMENT 2*

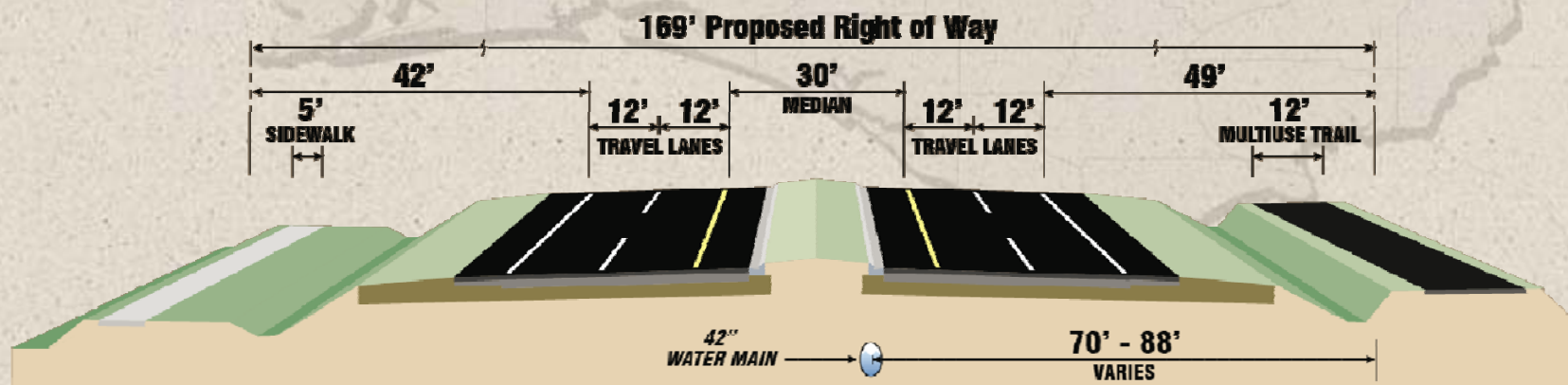
## *PROJECT MILESTONES*

- Draft EA Submitted to FHWA and Cooperating Agencies – February 2011
- Draft EA Approved for Public Availability – May 2011
- Public Hearing – April 2011
- EA/FONSI – Completed October 2011
- EA/FONSI – Submitted to FHWA March 2014 (plan consistency and “SR” 388)



# *WEST BAY PARKWAY – SEGMENT 2*

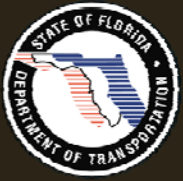
## *PREFERRED ALTERNATIVE TYPICAL SECTION*



**SUBURBAN TYPICAL SECTION**  
55 mph Design Speed

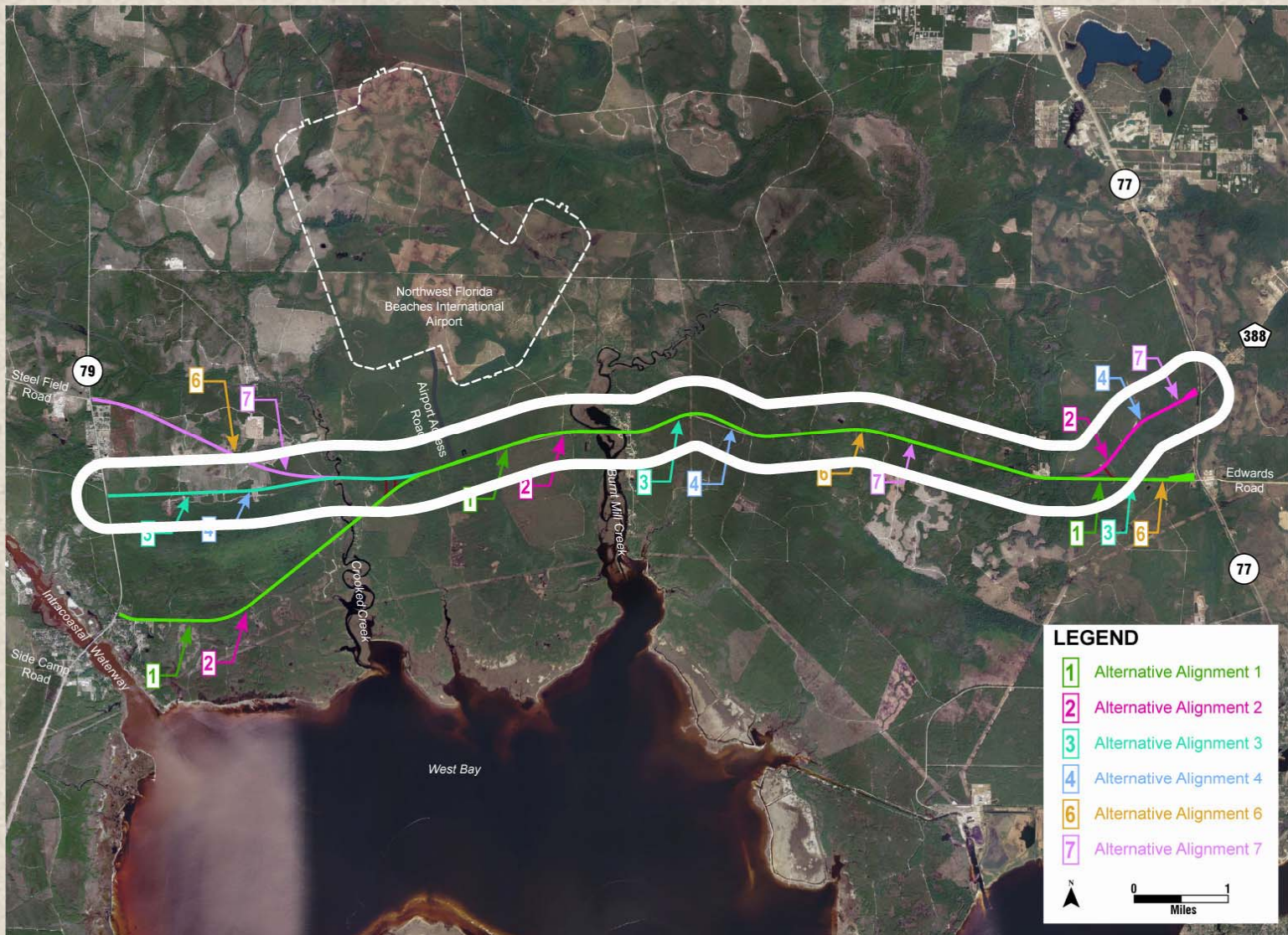
*etdm*  
Efficient Transportation  
Decision Making





# *WEST BAY PARKWAY – SEGMENT 2*

## *PREFERRED ALTERNATIVE ALIGNMENT*

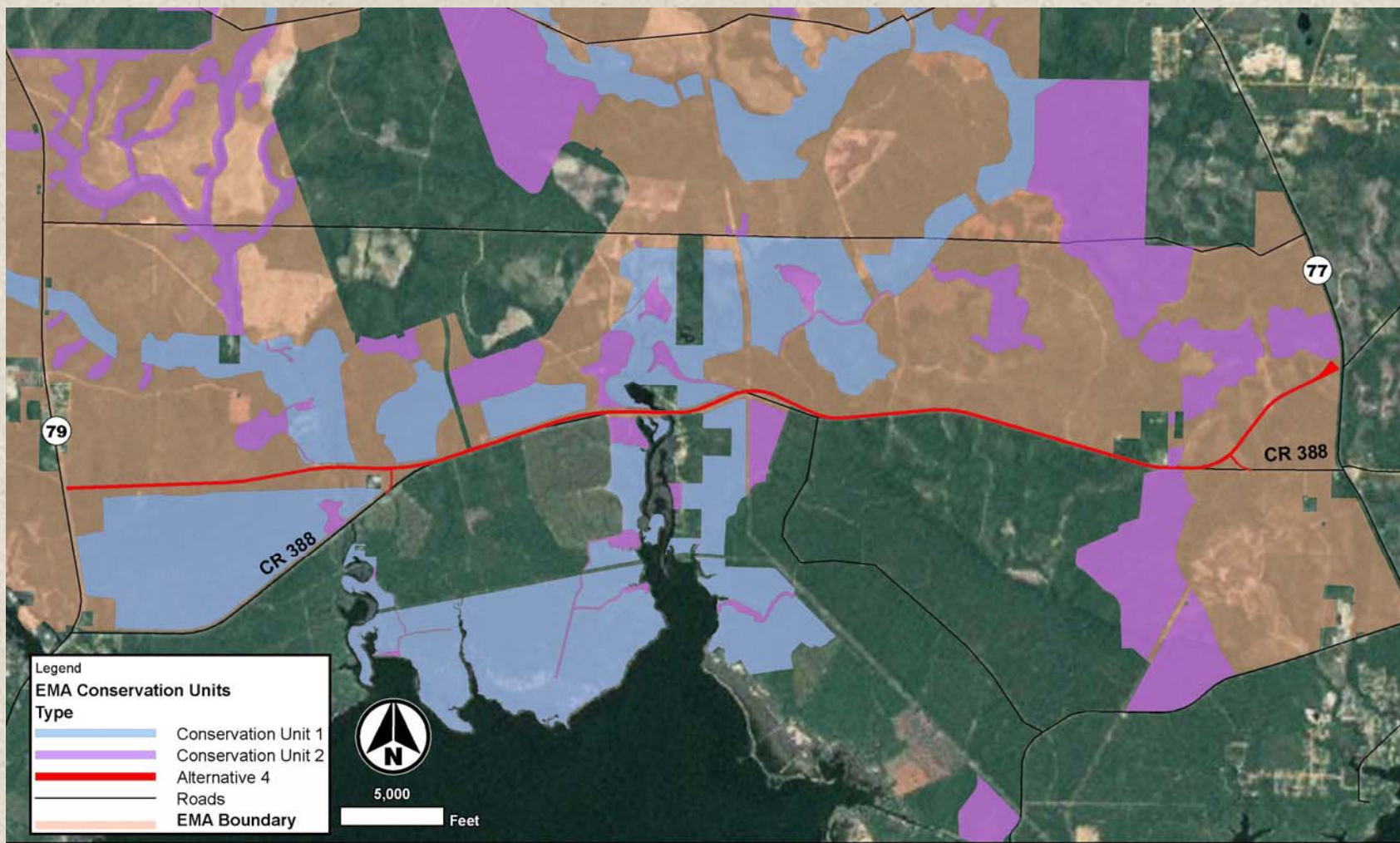






# WEST BAY PARKWAY - SEGMENT 2

## RGP - EMA II







# *WEST BAY PARKWAY - SEGMENT 1*



West Bay Parkway Segment 1 PD&E - Environmental Impact Statement

Efficient Transportation  
Decision Making





# WEST BAY PARKWAY - SEGMENT 1





# *WEST BAY PARKWAY – SEGMENT 1*

## *PROJECT MILESTONES*

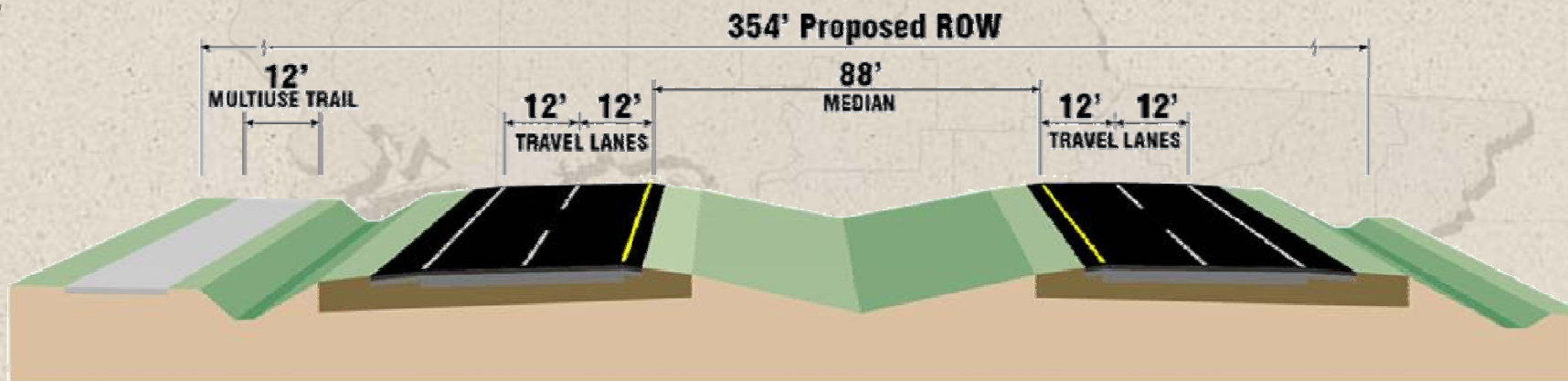
- Programming Screen Review – Sep 2009
- Corridor Evaluation Summary Report Finalized – Sep 2010
  - ETAT Field Review – Aug 2009
  - Corridor Alternatives Public Meeting – Nov 2009
  - Issue Action Plans – Sep 2010
  - Corridors Identified for Further Analysis – Approved Feb 2011
- Development and Analysis of Alternative Alignments
  - Agency Field Reviews – May 2011
  - Field Evaluations – Feb thru June 2011
  - Alternative Alignments Public Meetings – June 2011
- Agency Coordination on Draft Technical Documents
  - CRAS – June 2012
  - WER & ESBA – Sep 2012





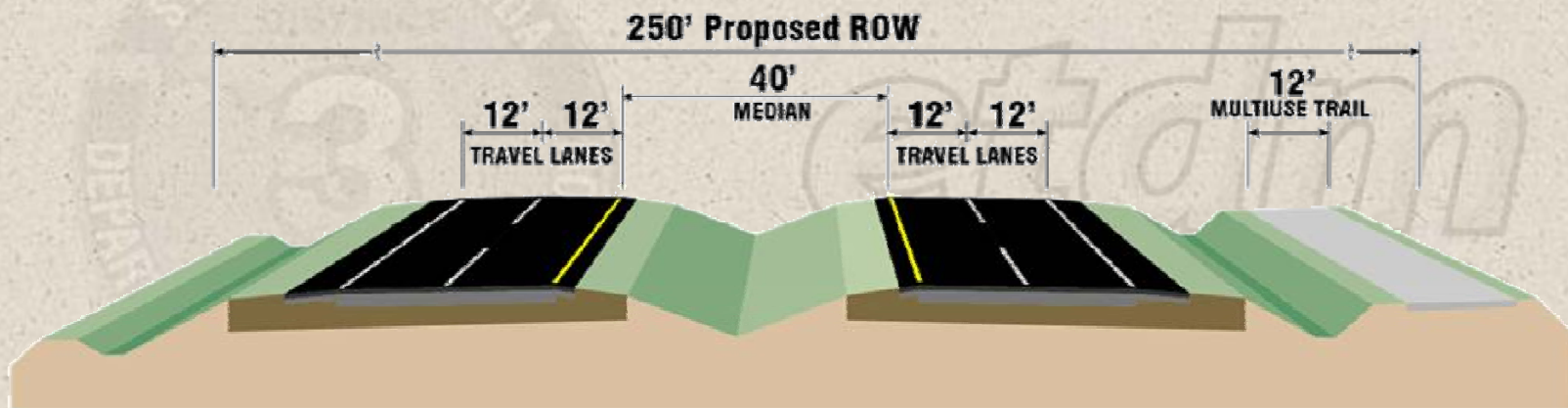
# *WEST BAY PARKWAY – SEGMENT 1*

## *PROPOSED ROADWAY TYPICAL SECTIONS*



### **RURAL LIMITED ACCESS FREEWAY TYPICAL SECTION**

70 mph Design Speed



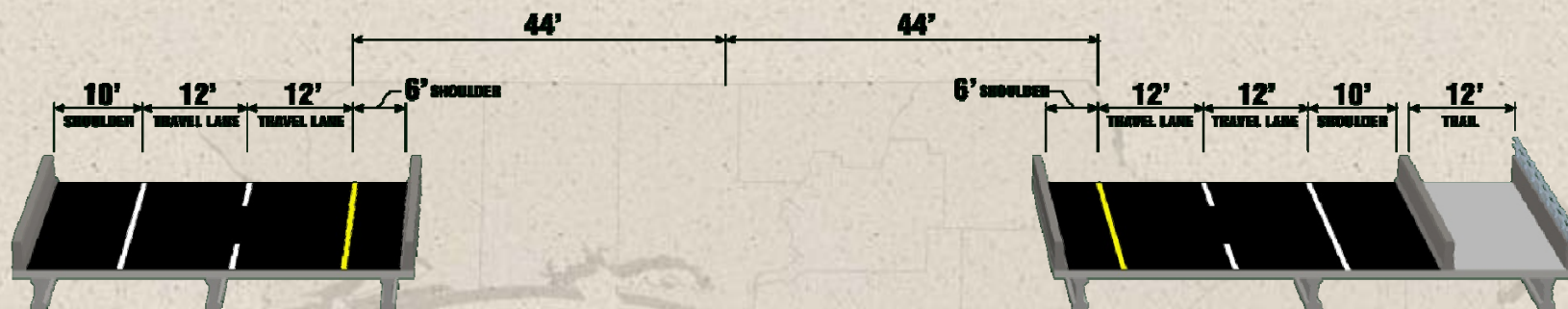
### **RURAL CONTROLLED ACCESS ARTERIAL TYPICAL SECTION**

65 mph Design Speed



# WEST BAY PARKWAY – SEGMENT 1

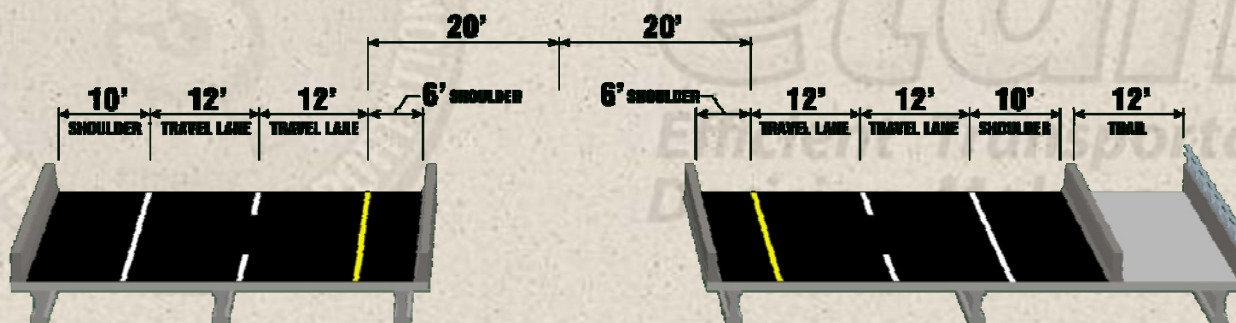
## PROPOSED BRIDGE TYPICAL SECTIONS



**LIMITED ACCESS BRIDGE OVER WATER**



**LIMITED ACCESS BRIDGE OVER ROADWAYS**



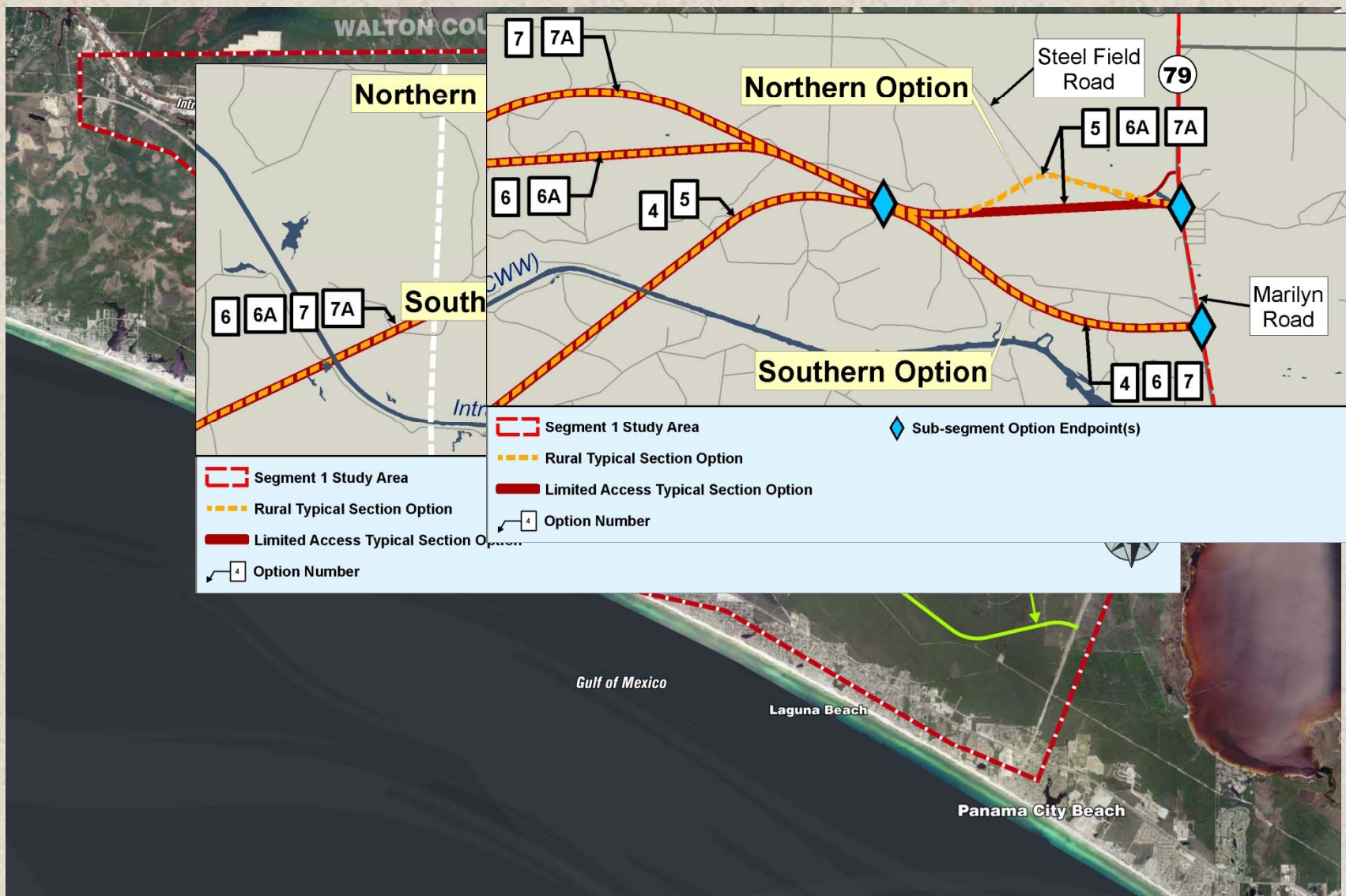
**RURAL BRIDGE**





# WEST BAY PARKWAY – SEGMENT 1

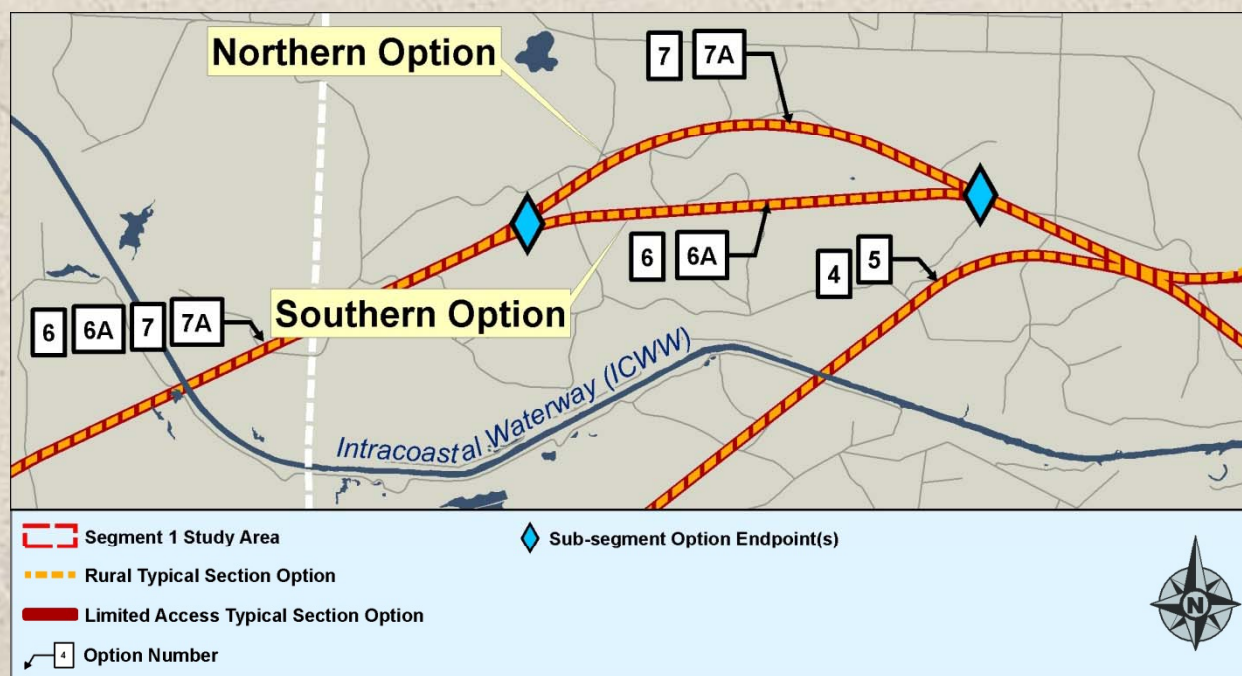
## ALTERNATIVE ALIGNMENTS





# WEST BAY PARKWAY – SEGMENT 1

## SUB – SEGMENT COMPARISONS



The northern option of the middle sub-segment has less:

- Wetland impacts
- Floodplain impacts
- Involvement with waterbodies
- Involvement with conservation land uses





# WEST BAY PARKWAY – SEGMENT 1

## SUB – SEGMENT COMPARISONS



Approach to SR 79 Sub-Segment – both sub-segments retained for further analysis.

Efficient Transportation  
Decision Making



# WEST BAY PARKWAY - SEGMENT 1

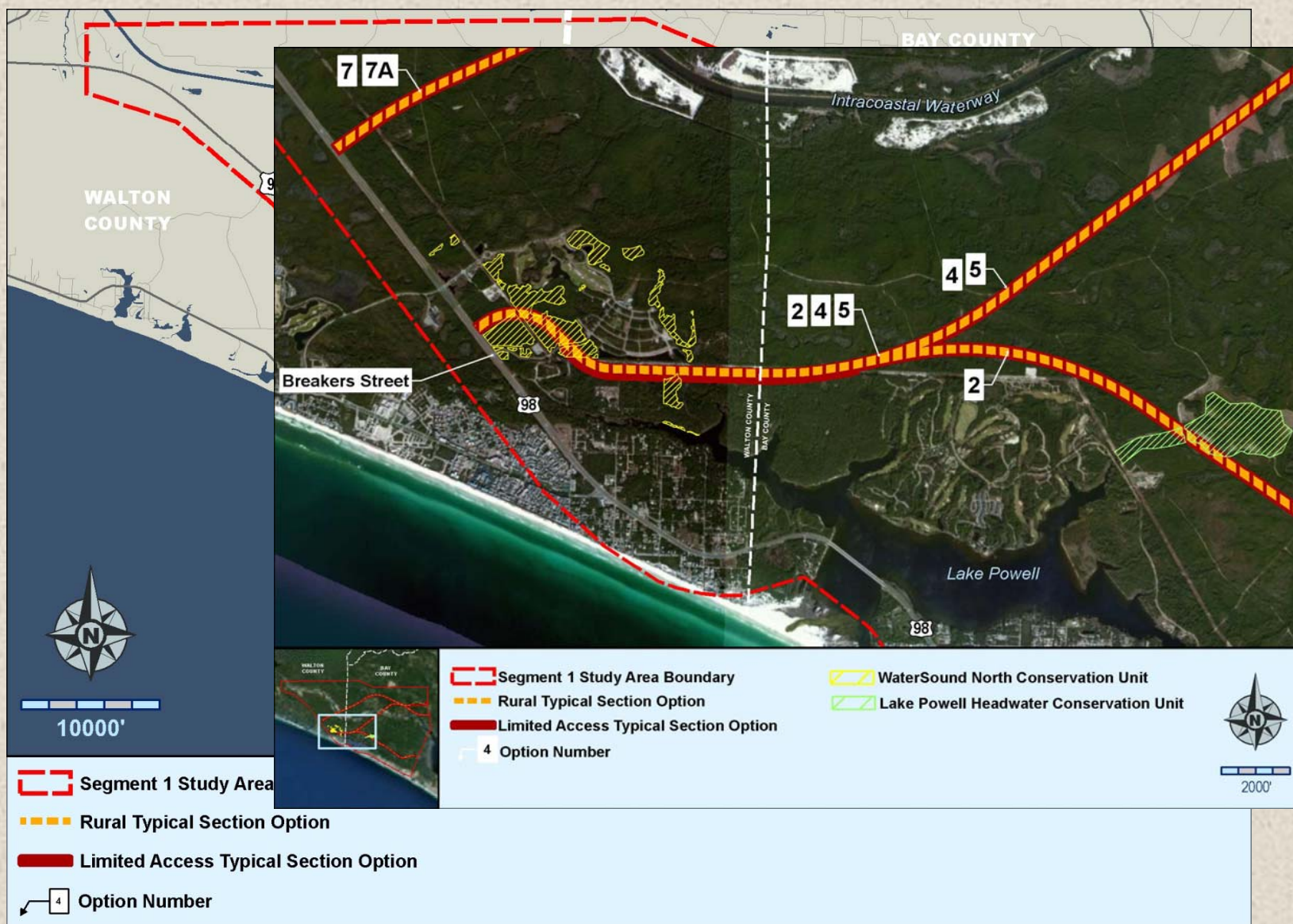






# WEST BAY PARKWAY - SEGMENT 1

## SECTION 4(F)



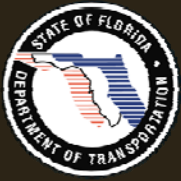


# WEST BAY PARKWAY – SEGMENT 1

## SECTION 4(F)

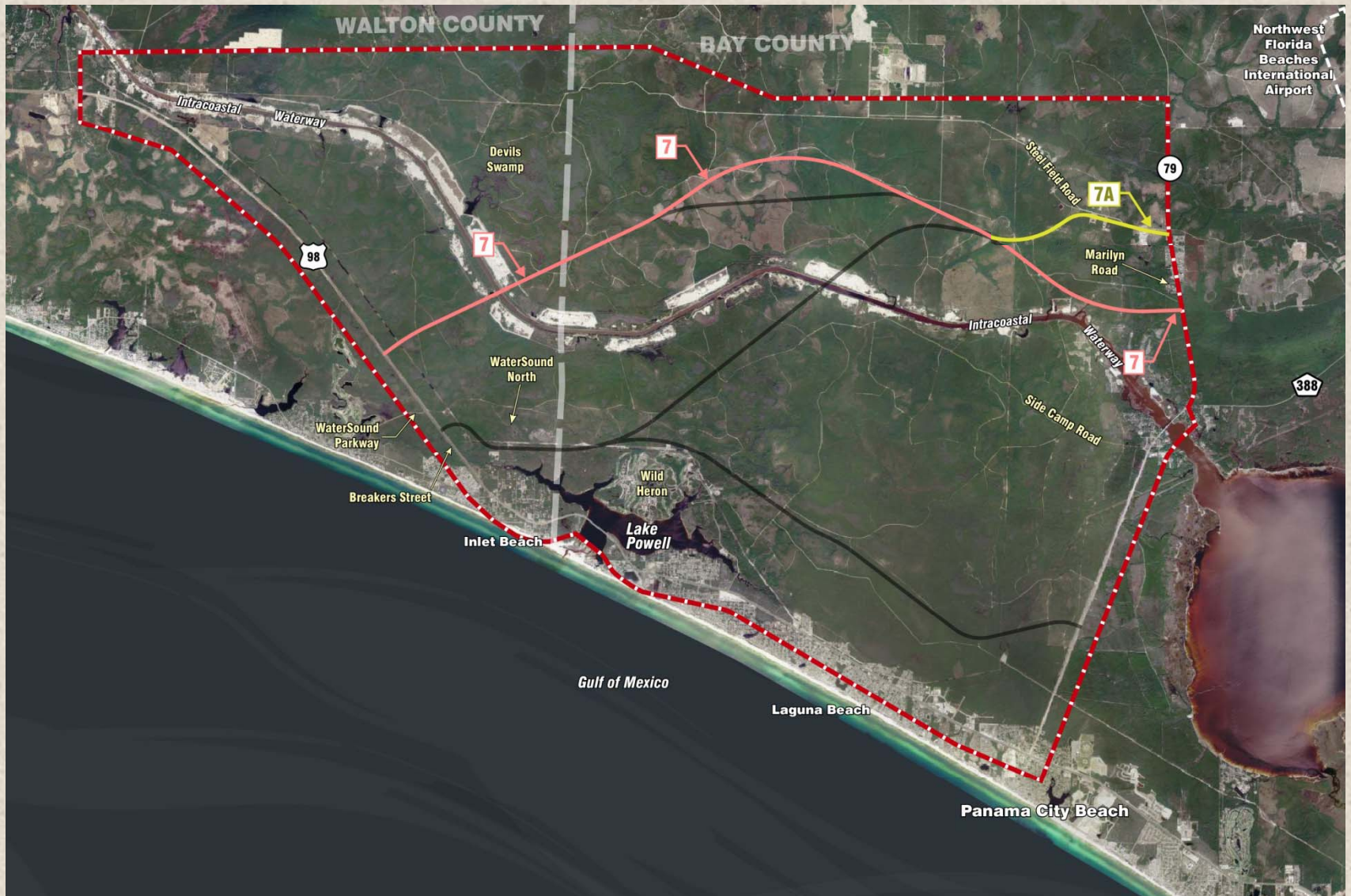
Section 4(f) Resources	Alternatives				
	2	4	5	7	7A
Ward Creek Mitigation Area	0	0	0	0	0
Panama City Beach Conservation Park	0	0	0	0	0
Devil's Swamp Mitigation Area	0	0	0	0	0
WaterSound North Conservation Easement	54	54	54	0	0
Lake Powell Headwaters Conservation Easement	12	0	0	0	0
FDOT Trail	0	0	0	0	0
<b>Total</b>	<b>66</b>	<b>54</b>	<b>54</b>	<b>0</b>	<b>0</b>





# WEST BAY PARKWAY - SEGMENT 1

## AVOIDANCE ALTERNATIVES





# *WEST BAY PARKWAY – SEGMENT 1*

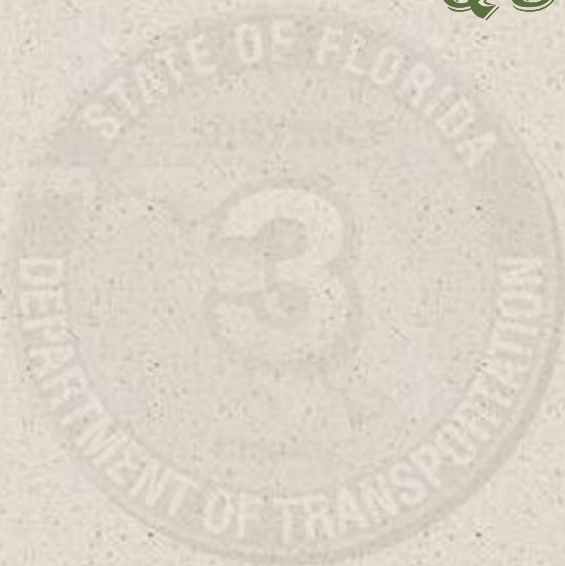
## *PROJECT SCHEDULE*

- DEIS FDOT/CEMO Review – April 2013
- Submit and approve Draft Environmental Impact Statement (EIS) and Preliminary Engineering Report for public availability – Fall 2014
- Public Hearing – Winter 2014
- Selection of Preferred Alternative – Early 2015
- Final EIS – Spring 2015
- Location Design Concept Acceptance – October 2015





***QUESTIONS?***



***etdm***  
Efficient Transportation  
Decision Making