

FDOT Historic Highway Bridges Program Status & Update

Presented by:

Roy Jackson

State Cultural Resources Coordinator
Florida Department of Transportation
State Environmental Management Office

April 2014

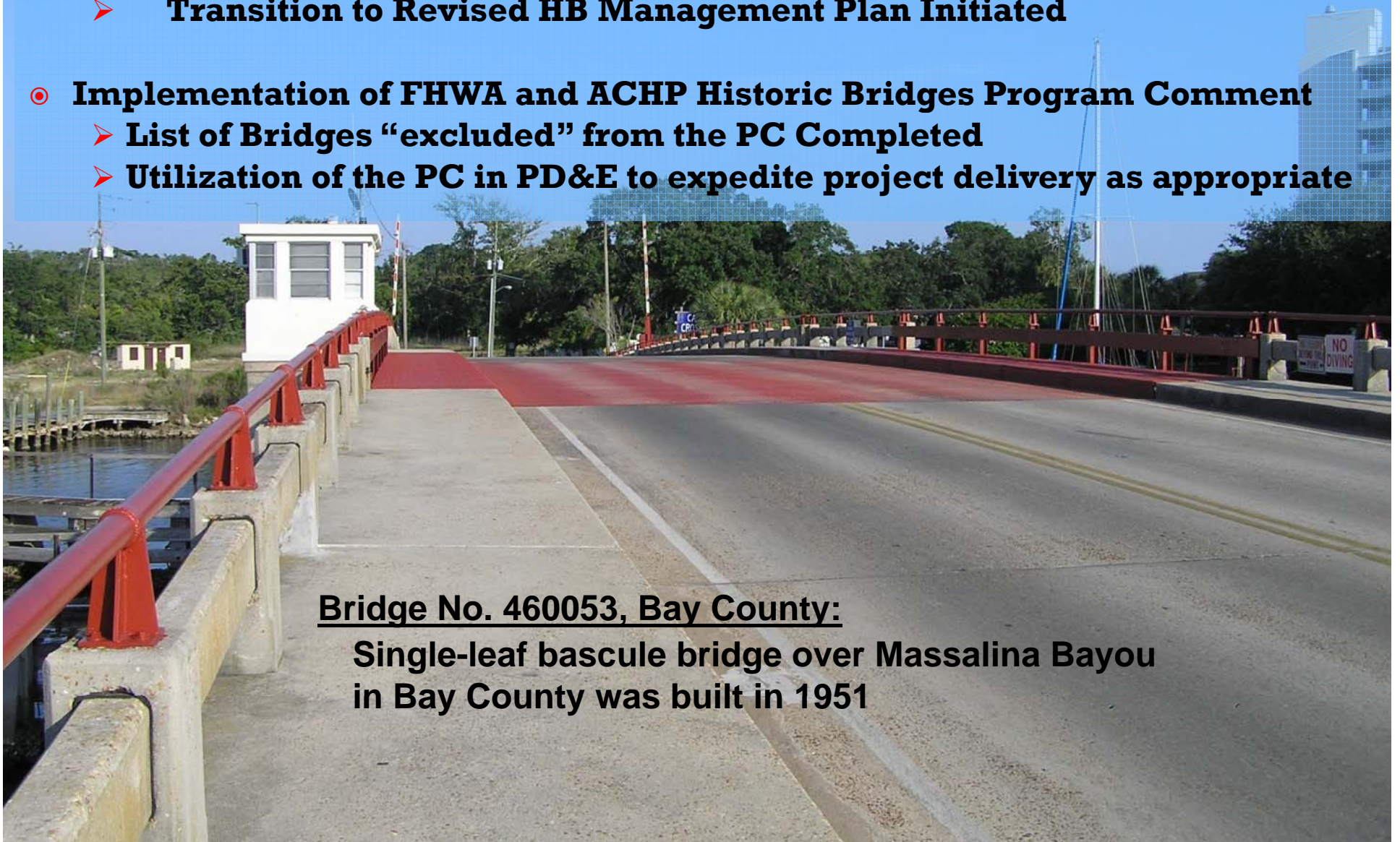


Introduction

- **Update of Historic Bridges Inventory and Evaluation Completed**
 - **Consultation complete with FHWA and SHPO**
 - **Transition to Revised HB Management Plan Initiated**
- **Implementation of FHWA and ACHP Historic Bridges Program Comment**
 - **List of Bridges “excluded” from the PC Completed**
 - **Utilization of the PC in PD&E to expedite project delivery as appropriate**

Bridge No. 460053, Bay County:

**Single-leaf bascule bridge over Massalina Bayou
in Bay County was built in 1951**



The Survey

Apalachicola River Bridge (No. 470029)
Calhoun County
1938/1998



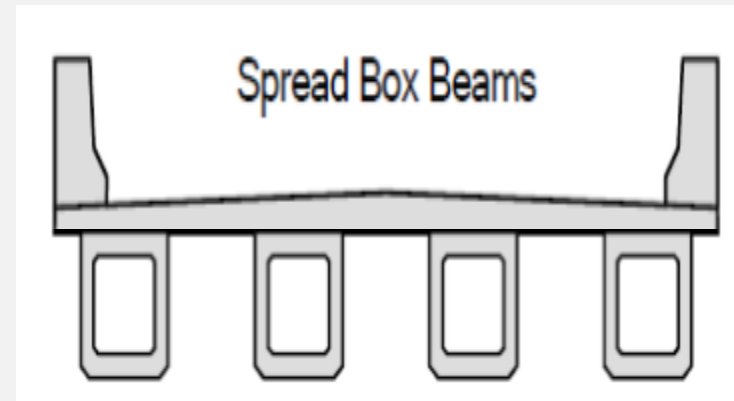
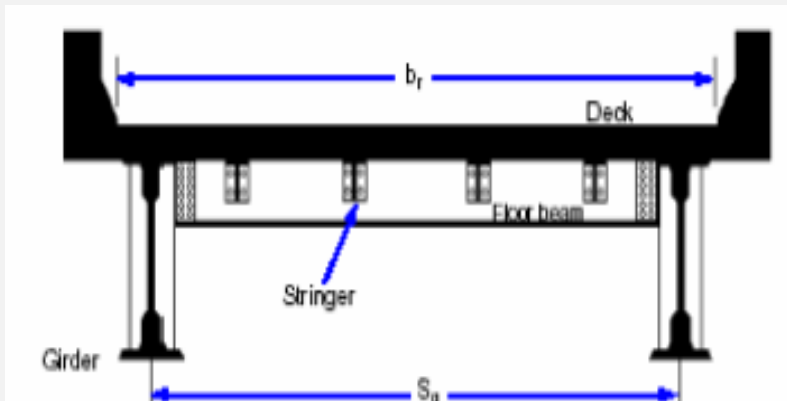
Log Lake Bridge, Okaloosa County





**Bayline RR Bridge (No. 530003),
Jackson County**

- **The NBI lists 4162 Florida bridges constructed prior to 1971, exclusive of IHS bridges.**
- **Of these, 590 were selected for initial file review**
- **523 bridges were the focus of field survey, including 135 previously identified NRHP listed or eligible bridges**
- **Roughly 24% of the surveyed bridges were built in the 1960s**



- ◉ 61 of the total 523 surveyed bridges were newly evaluated as eligible for the NRHP
- ◉ Approximately half of these significant bridges are tee beam, slab, and girder types
- ◉ 13 of the 61 newly significant bridges were built in the 1960s. They include the following types:
 - 4 steel bascules
 - 3 steel girders
 - 3 concrete box beams
 - 1 prestressed concrete girder
 - 1 thru truss
 - 1 tunnel



Pensacola Bay Bridge
Note : Not Eligible Brandon

◎ **602 bridges listed in D-3, 595 are extant**

◎ **53% are concrete or steel culverts,**

◎ **20% are girder bridges**

◎ **19% are concrete slab**

◎ **31 historic bridges selected for field Survey,**

◎ **6 bridges are eligible for the
NRHP,**

◎ **4 previously evaluated**

◎ **2 newly recorded.**

**Torreya Stone Arch
Liberty County**



Summary of Survey Results

(by District)

FDO T Dist rict	2000 No. Surv eyed	2010 No. Surv eyed	2000 No. Signif icant	2010 No. Signif icant
1	26	64	12	5
2	52	160	17	30
3	12	31	7	2
4	21	51	9	10
5	27	60	9	4
6	38	85	22	3
7	49	72	18	7
Tot	225	523	94	61

**Construction of Blountstown
Bridge Nearing Completion, 1937**
(*Florida Photographic Collection*)



Summary of Survey Results (by Bridge Type)

Type	Significant 2000	Significant 2010	Type	Significant 2000	Significant 2010
Arch-Deck	20	5	Slab	1	15
Arch-Thru	3	0	Tee Beam	3	10
Box Beam	0	3	Truss-Pony	4	0
Cable Stayed Girder	0	0	Truss-Thru	6	1
Suspension	1	0	Tunnel	0	1
Culvert	6	7	Bascule	13	9
Frame	0	1	Lift	4	0
Girder	20	8	Swing	13	1

**SR-399 / ICWW
Santa Rosa**



57 historic bridges have been demolished since the previous statewide historic bridge survey; an additional 6 could not be relocated, and their status is unknown

11 of the demolished bridges were previously determined eligible for listing in the NRHP

The 11 “lost” bridges include:

**4 Concrete girder bridges
(1920s and 1930s)**

**4 Movable bascules
(1920s and 1930s)**

**2 Movable swings
(1920s and 1940s)**

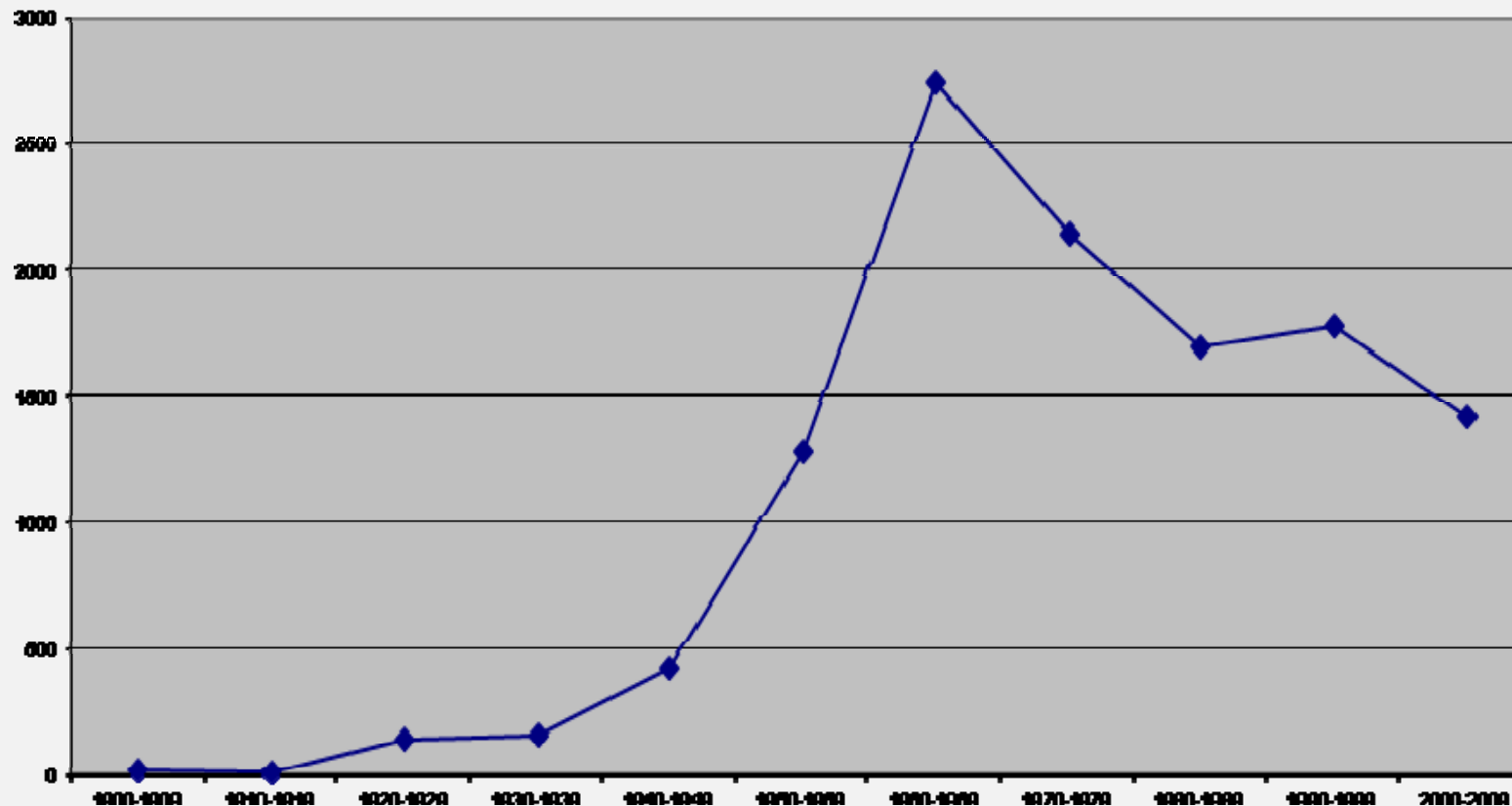
**1 Movable lift
(1919)**

8 bridges previously determined NRHP eligible have undergone substantial changes which may affect their continued eligibility

Bridge Type	No. Demo/ Unverified Status
Arch – Deck	6/1
Culvert	1
Girder	23/2
Movable – Bascule	17
Movable – Lift	1
Movable – Swing	2
Slab	3
Tee Beam	4
Truss – Pony	0/2
Truss – Thru	0/1

The 2013 Program Comment for Post World War 2 Bridges

Number of Extant Bridges Constructed by Decade



The Program Comment applies to specific types of bridges and culverts built after 1945, including various forms of reinforced concrete slab bridges, reinforced concrete beam and girder bridges, steel multi-beam bridges or multi-girder bridges, and culverts and reinforced concrete boxes (Section V).

- Over 104000 of these common bridge types extant in Florida**
- 19 Total Bridges “excluded” from this exemption
(remember - The NBI lists 4162 Florida bridges constructed prior to 1971, exclusive of IHS bridges)**