



September 24, 2015

Environmental Technical Advisory Team

BROOKS BRIDGE REPLACEMENT STUDY

ETDM #: 14214

Brooks Bridge Replacement Study – Project Location



Purpose and Need

What is the Purpose of the Study?

- Identify the best solution and location for replacement of the existing Brooks Bridge and secure federal approvals

Why is the Project Needed?

- Structurally deficient
- Does not meet current design standards
- Does not meet Americans with Disabilities Act (ADA) pedestrian/bike requirements



ETDM Project #14214

- PD&E Study initiated February 2015
- ETAT review started April 17, 2015
 - Extensions granted June 12th and August 6th
- Federal agency involvement
 - FHWA – Lead
 - USCG - Cooperating
 - USACE – Cooperating
 - NPS - Participating
- Environmental Assessment anticipated COA

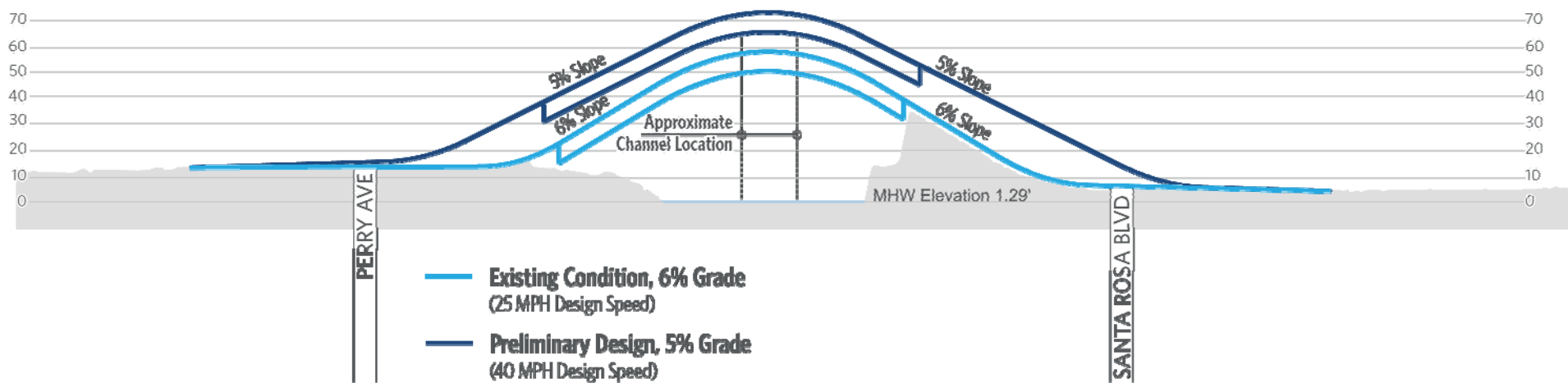
ETDM Project #14214

NATURAL											CULTURAL	COMMUNITY								
Air Quality	Coastal & Marine	Contamination	Farmlands	Floodplains	Infrastructure	Navigation	Special Designations	Water Quality & Quantity	Wetlands	Wildlife & Habitat	Historic & Archeological Sites	Recreation Areas	Section 4(f) Potential	Aesthetics	Economic	Land Use	Mobility	Relocation Potential	Social	Secondary Cumulative Effects
2	3	3	N/A	3	2	4	3	3	3	4	3	3	3	2	1	2	2	2	3	2

N/A	No Involvement	3	Moderate
1	Enhanced	4	Substantial
0	None	5	Dispute Resolution
2	Minimal		

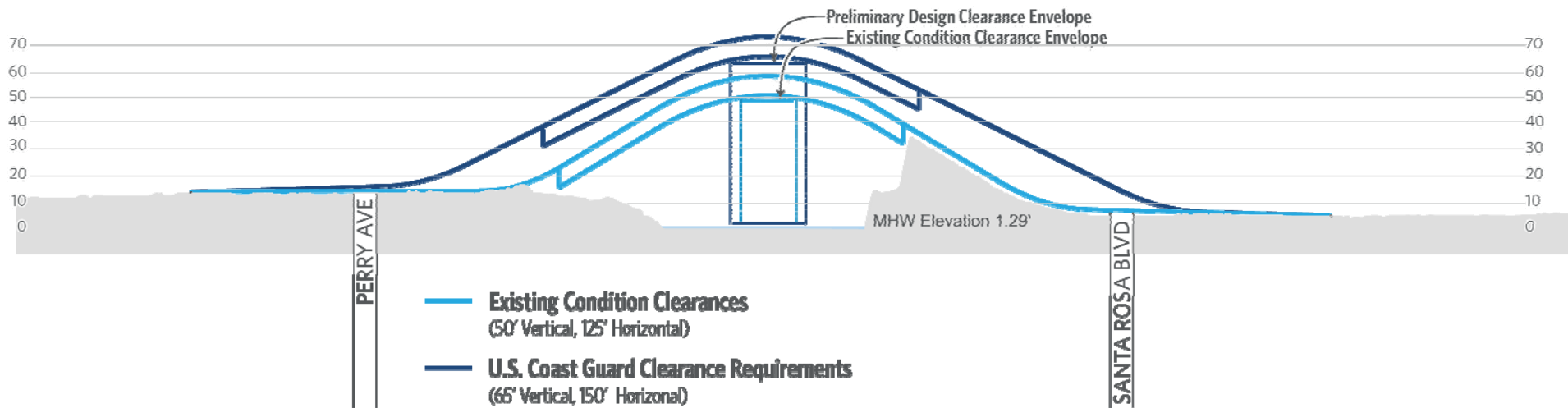
Project Considerations: Bridge Slope --- ADA Requirements

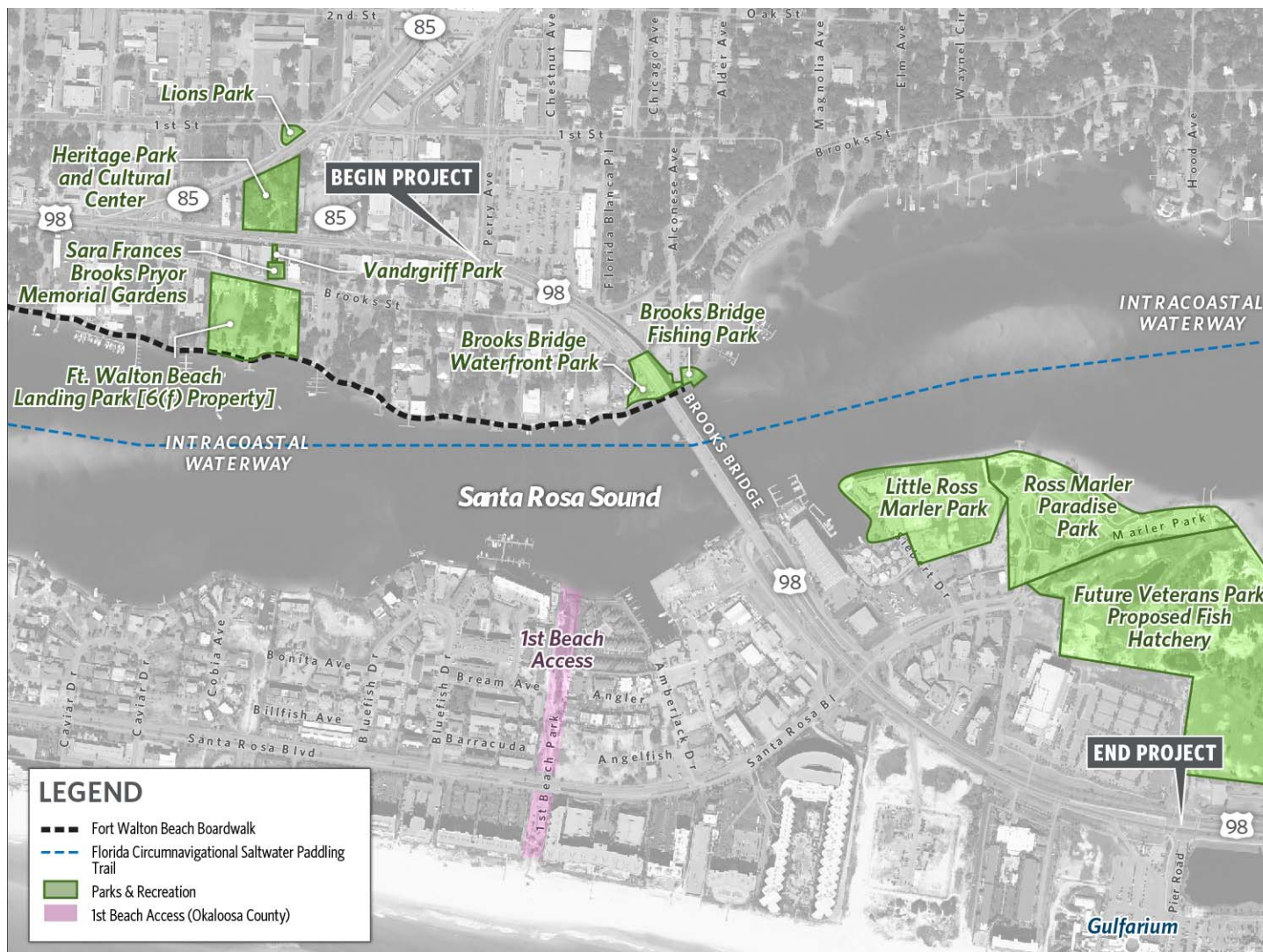
BROOKS BRIDGE EXISTING AND PROPOSED PROFILES



Project Considerations: Bridge Height --- Coast Guard Clearance Requirements

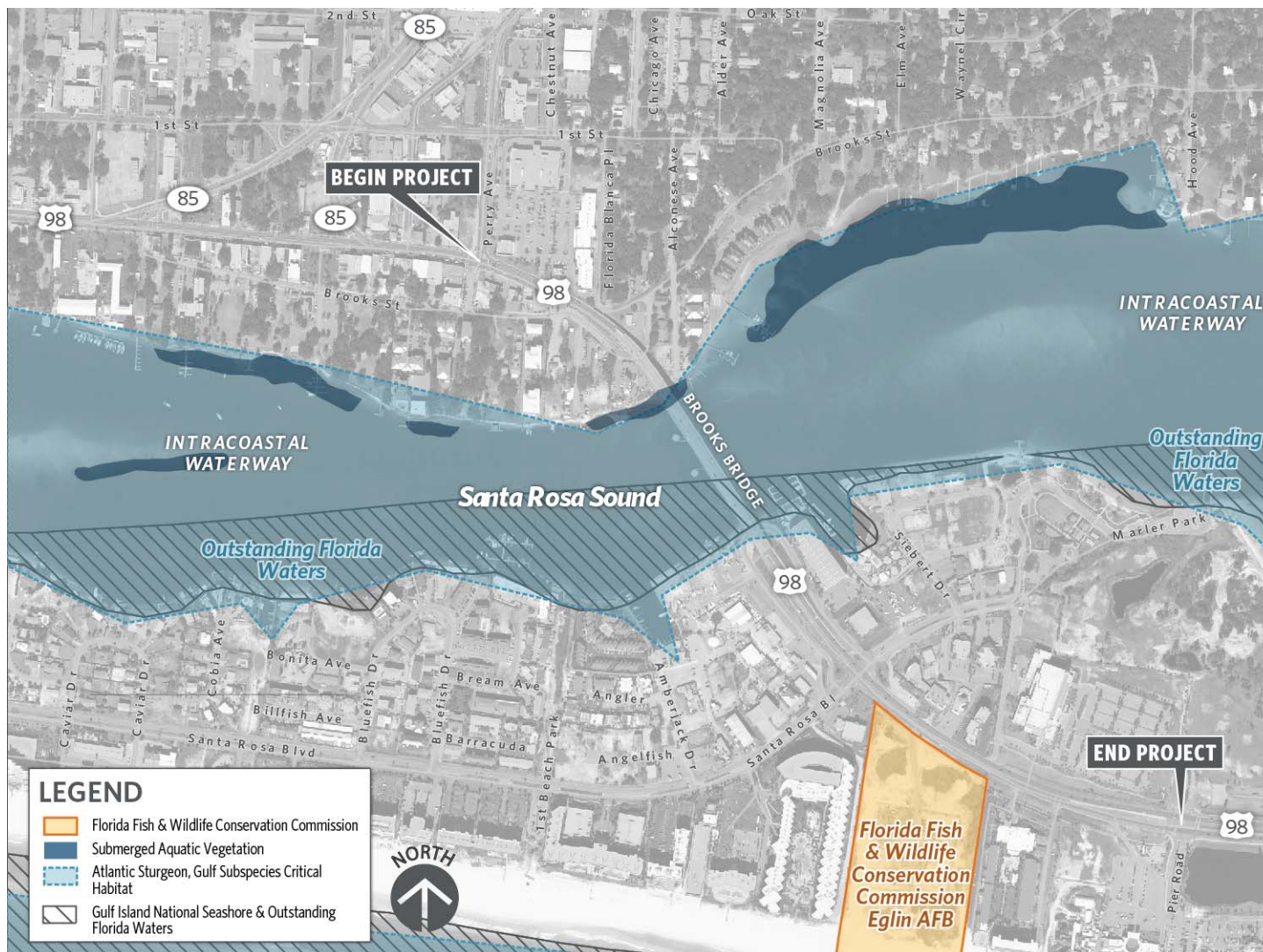
BROOKS BRIDGE EXISTING AND PROPOSED CLEARANCES





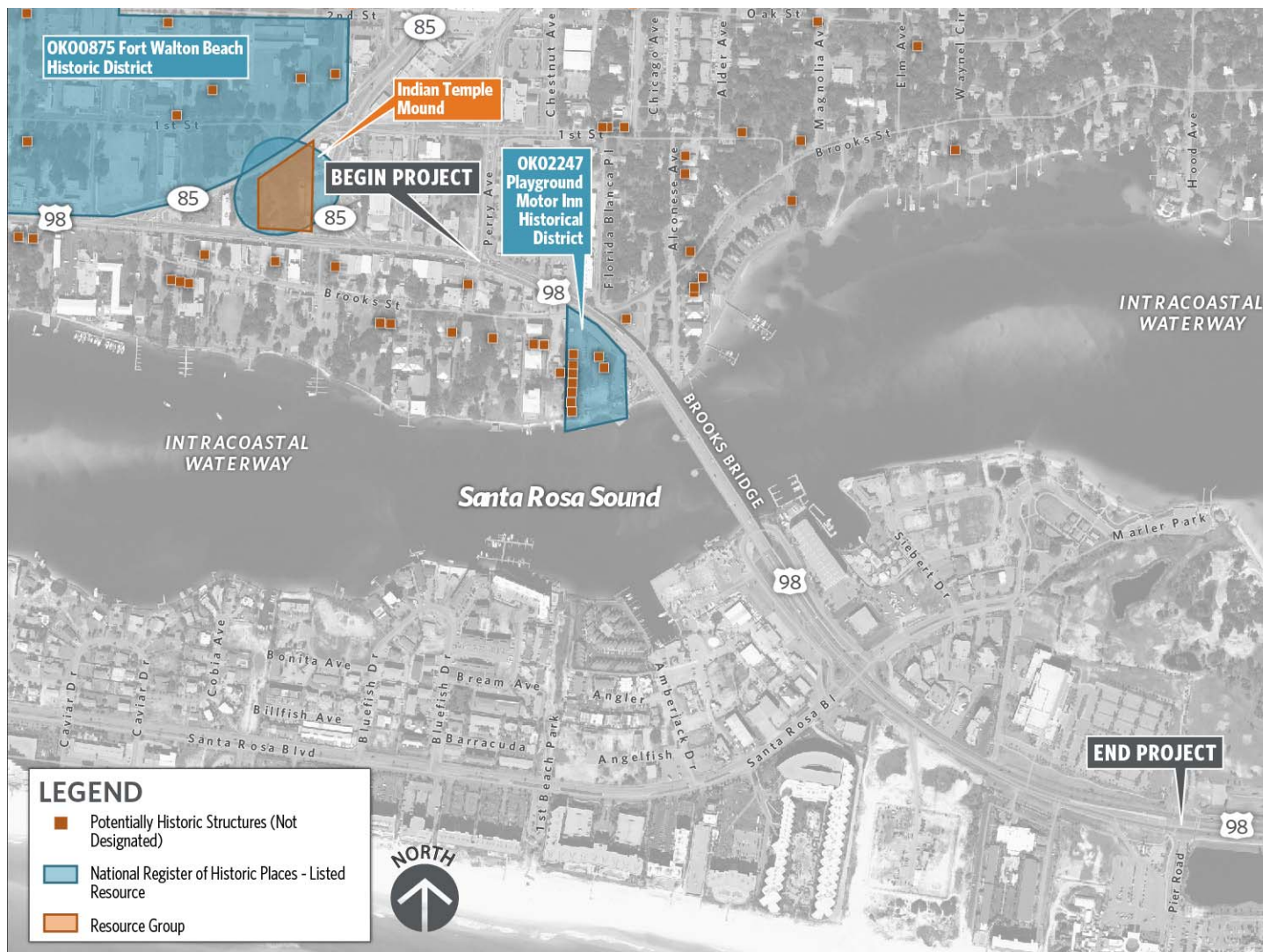
Project Considerations: Section 4(f) Resources

- Consideration for publicly owned parks, trails and recreational facilities



Project Considerations: Environmental Resources

- Gulf Islands National Seashore
- Critical Habitat for Gulf Sturgeon
- Submerged Aquatic Vegetation



Project Considerations: Cultural Resources

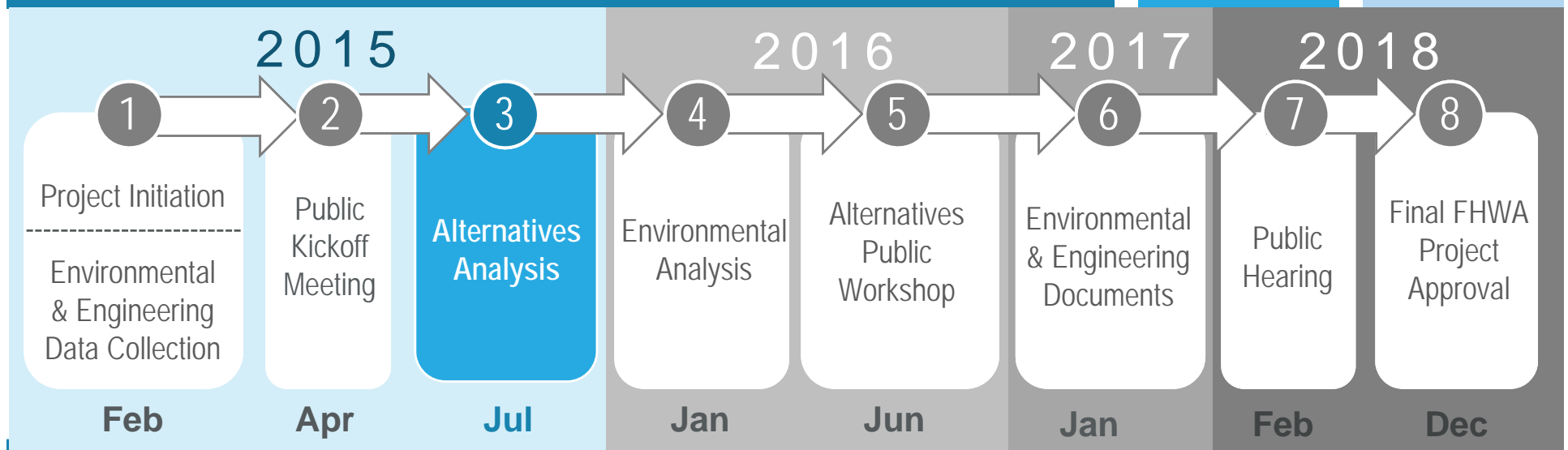
- Consideration for historic structures and known archeological resources

RESOURCE	DOCUMENT / ACTION
Air Quality	<ul style="list-style-type: none"> Air Quality Report
Contamination	<ul style="list-style-type: none"> Contamination Screening Evaluation Report
Cultural Resources	<ul style="list-style-type: none"> Cultural Resource Assessment Survey
Navigation	<ul style="list-style-type: none"> Vessel Survey & Navigation Evaluation Report
Noise	<ul style="list-style-type: none"> Noise Study Report
Recreation	<ul style="list-style-type: none"> Determination of Applicability
Relocation Potential	<ul style="list-style-type: none"> Conceptual State Relocation Plan
Water Quality	<ul style="list-style-type: none"> Location Hydraulics Report
Wetlands	<ul style="list-style-type: none"> Wetlands Evaluation Report
Wildlife & Habitat	<ul style="list-style-type: none"> Endangered Species Biological Assessment Essential Fish Habitat Assessment SAV Surveys Species Surveys
Wetlands	<ul style="list-style-type: none"> Wetlands Evaluation Report

Study Documents

- Various reports will be prepared to address issues raised during the Programming Screen

Brooks Bridge Replacement Study – Project Schedule



Community Outreach

A continuous community outreach process is integrated into every step of the project to ensure that the corridor residents, businesses, the traveling public and other interested parties have meaningful participation in the process.

Contact Information

Project Manager

April Williams, PE

FDOT District 3
1074 Highway 90
Chipley, FL 32428
Toll free (888) 638-0250, ext. 1625
april.williams@dot.state.fl.us

Environmental Management Engineer

Brandon Bruner, PE

FDOT District 3
1074 Highway 90
Chipley, FL 32428
Toll free (888) 638-0250, ext. 1509
joseph.bruner@dot.state.fl.us

Public Information Director

Ian Satter

FDOT District 3
1074 Highway 90
Chipley, FL 32428
Toll free (888) 638-0250, ext. 1205
ian.satter@dot.state.fl.us

Stay Involved: Follow us on  

Email: info@BrooksBridgeReplacement.com

Study Website: <http://www.nwflroads.com>