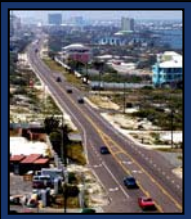


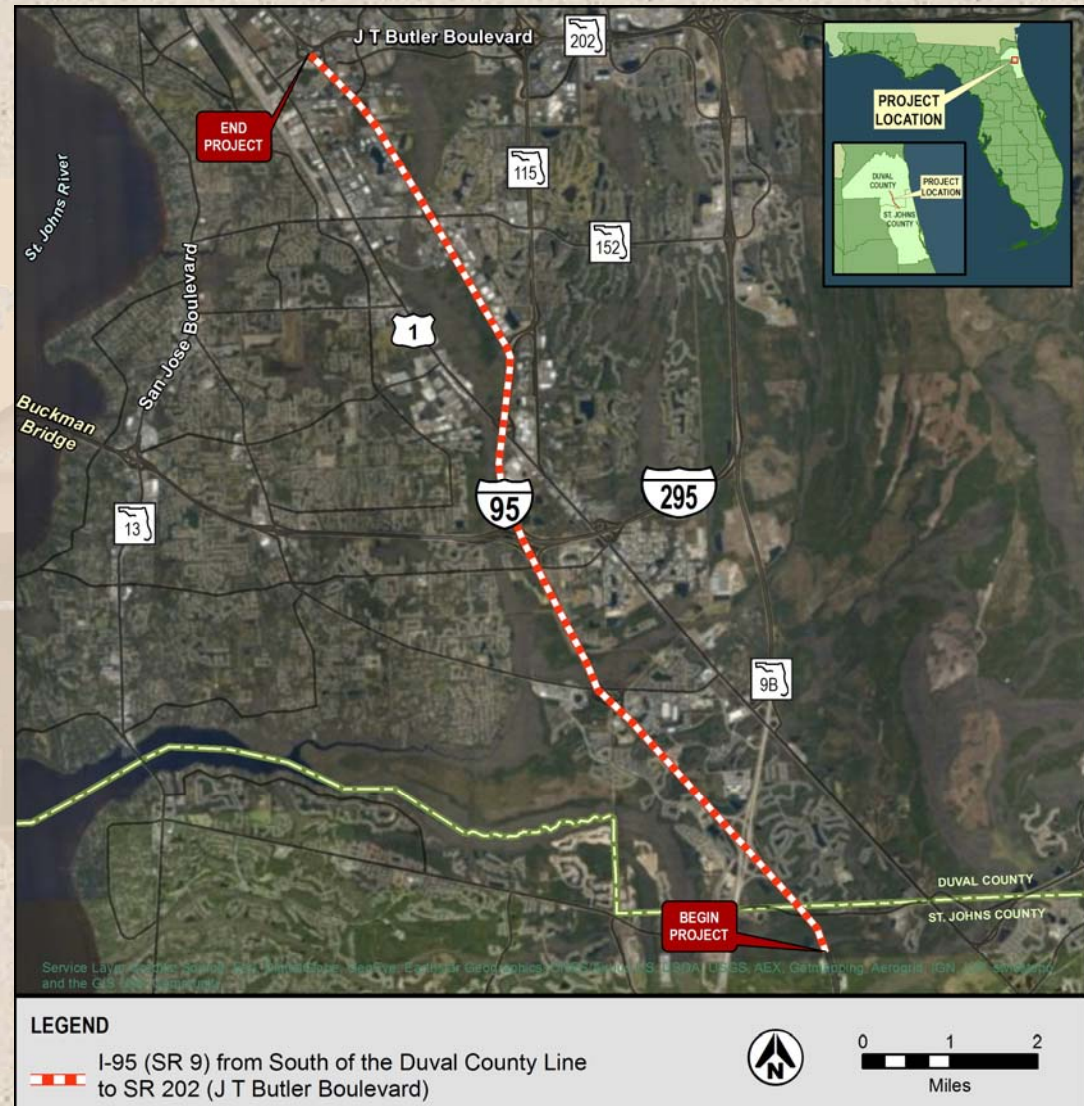
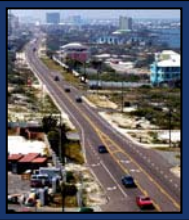
*Florida Department of
Transportation, District 2
Environmental Technical Advisory Team
(ETAT) Meeting
March 1, 2018*



etdm
**Efficient Transportation
Decision Making**

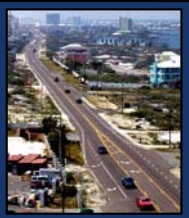
*I-95 from South
of Duval
County Line to
SR 202 (JTB)*

- ETDM #14278
- FPID #435577-4
- Programming Screen
- St. Johns & Duval Counties
- Limits: South of Duval County Line to SR 202 (JT Butler Boulevard)
- Approximately 12.5 miles
- Proposed improvements: Add express lanes
- Rescreen because the limits were expanded, previously from I-295 to JTB
- FDOT PM: Michael Brock, PE

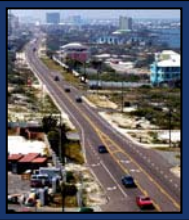
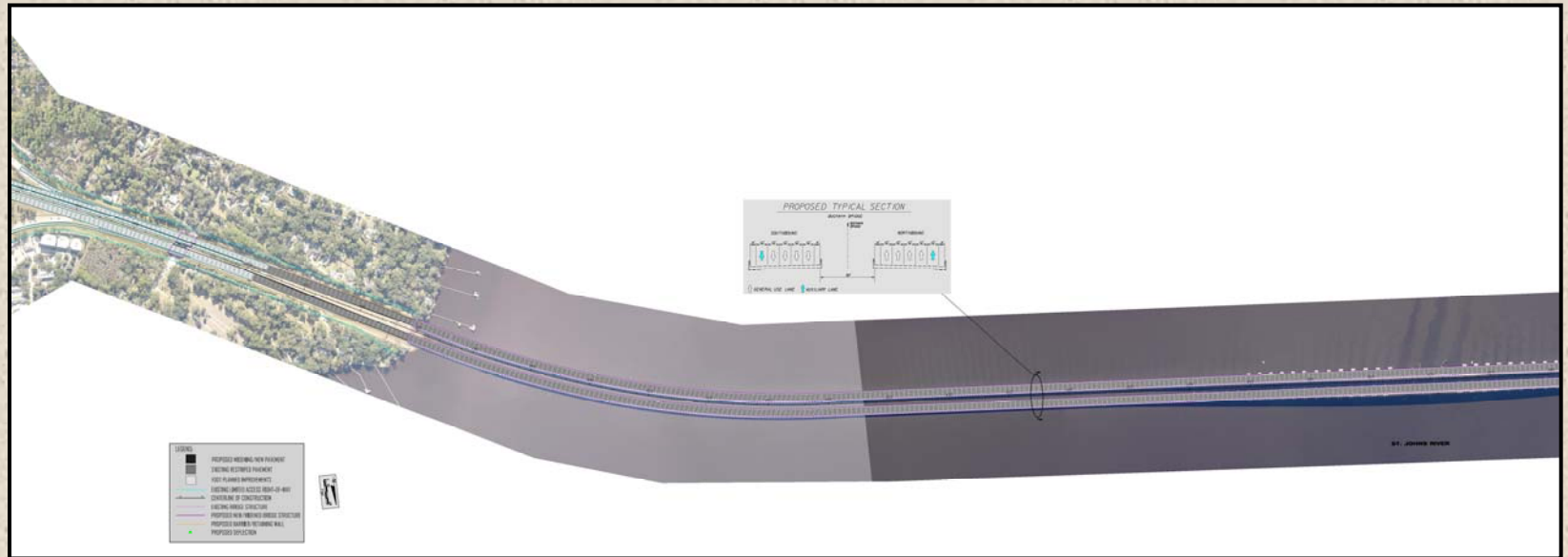


I-295 from SR 13 to SR 21 including Buckman Bridge

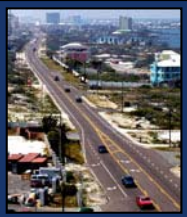
- ETDM #14362
- FPID# 213345-9
- Programming Screen
- Duval County
- Limits: SR 13 (San Jose Boulevard) to SR 21 (Blanding Boulevard)
- Proposed Improvements: Add lanes and reconstruct. Note, lanes will be added to the Buckman Bridge by restriping and reducing the shoulder width. The FDOT will not be expanding the bridge.
- FDOT PM: Michael Brock, PE



***I-295 from SR 13
to SR 21 including
Buckman Bridge***

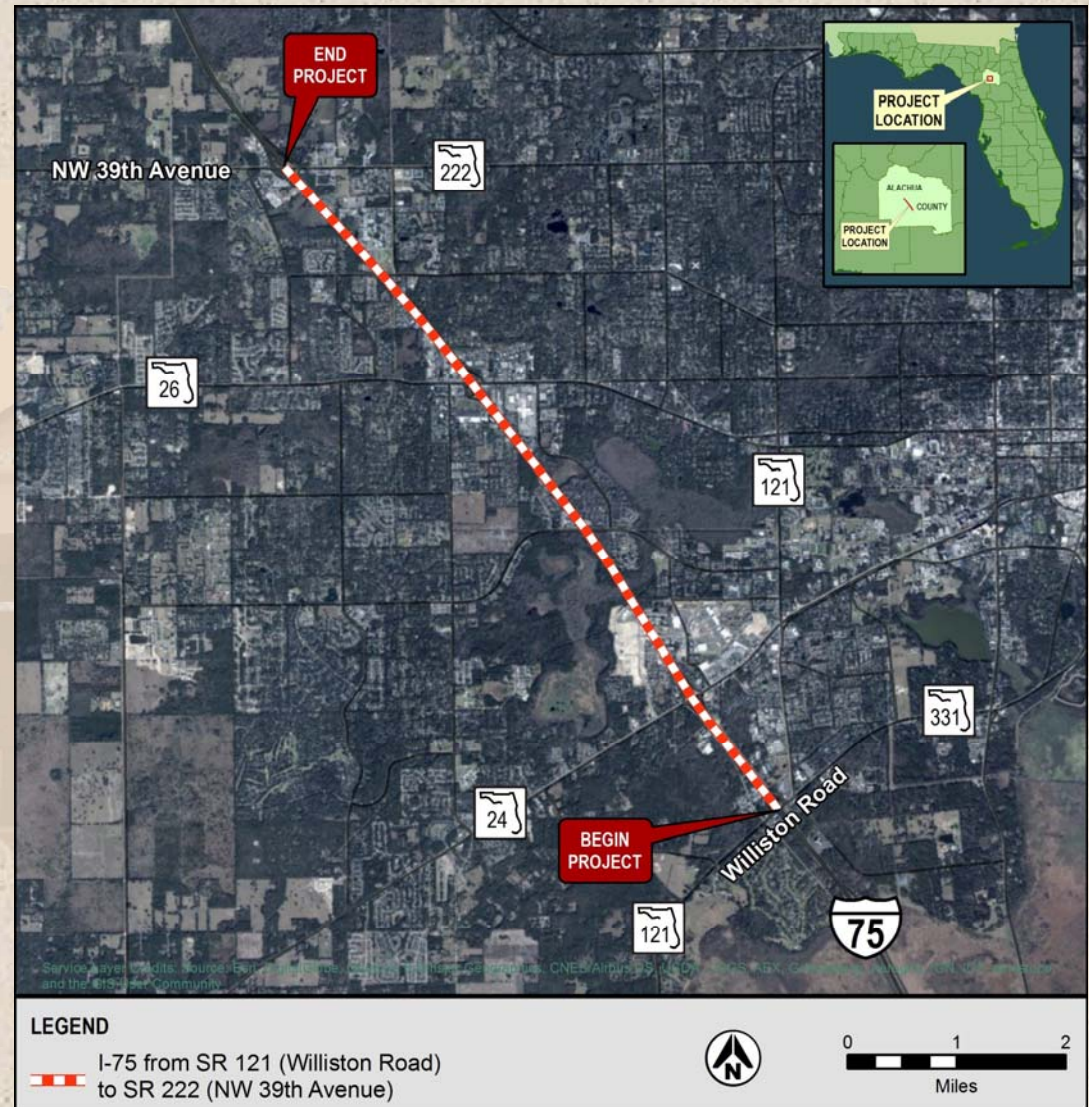
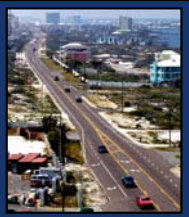


I-295 from SR 13 to SR 21 including Buckman Bridge



I-75 from SR 121 to SR 222

- ETDM #14263
- FPID #423071-6
- Programming Screen
- Alachua County
- Limits: SR 121 (Williston Road) to SR 222 (NW 39th Avenue)
- Proposed Improvements: Capacity improvements
- FDOT PM: David Tyler, PE



Questions??



etdm
**Efficient Transportation
Decision Making**

