

# First Coast Expressway Wetland Mitigation

FPID 422938-2-52-01 (St. Johns County) & 422938-3-52-01 (Clay County)

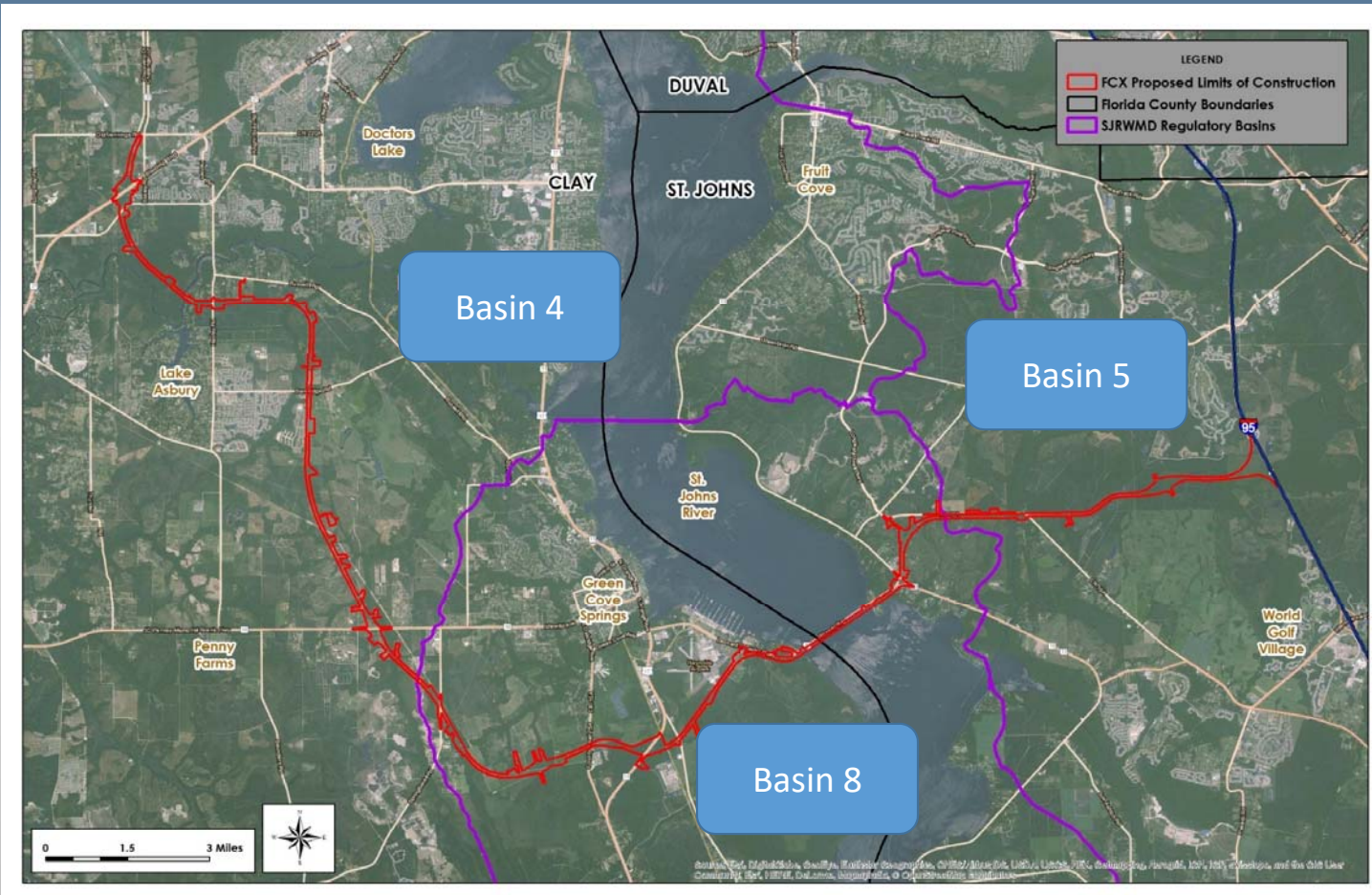


# Overview

- Estimated Direct Wetland Impacts by Basin
- Summary of Mitigation Banks
- Submerged Aquatic Vegetation (SAV)
- Tidal Freshwater Essential Fish Habitat (EFH)

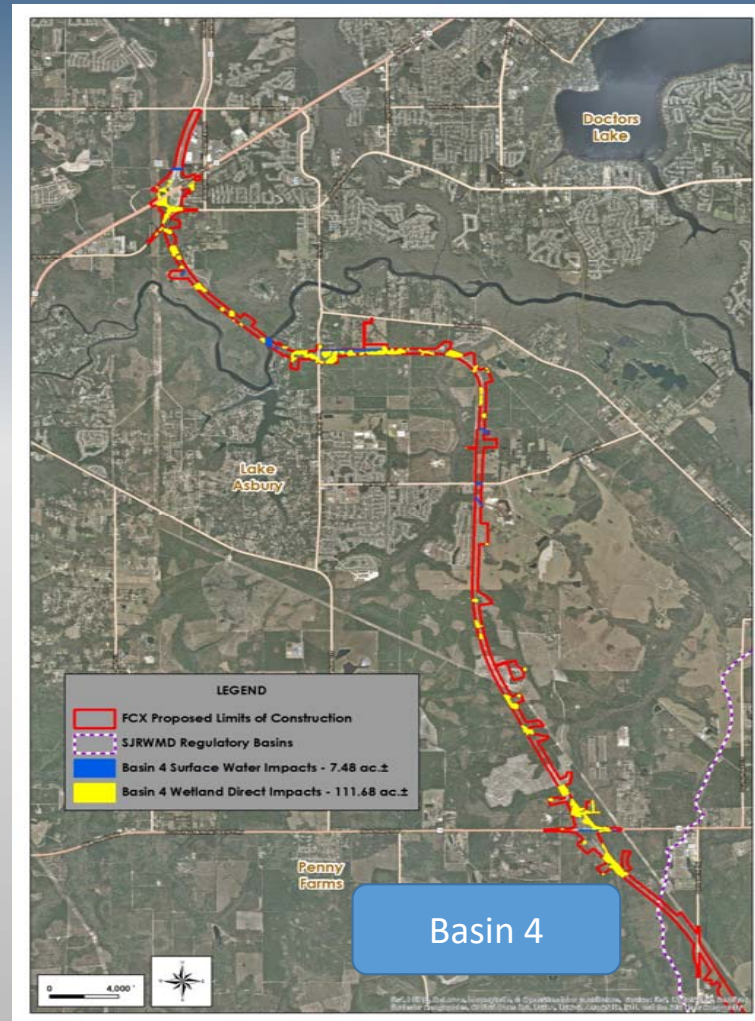


# SJRWMD Regulatory Basin Boundaries



# Estimated Direct Wetland Impacts

- **Basin 4** - 111.68 acres
- Mitigation Bank Credit Requirements:
  - 98.56 UMAM





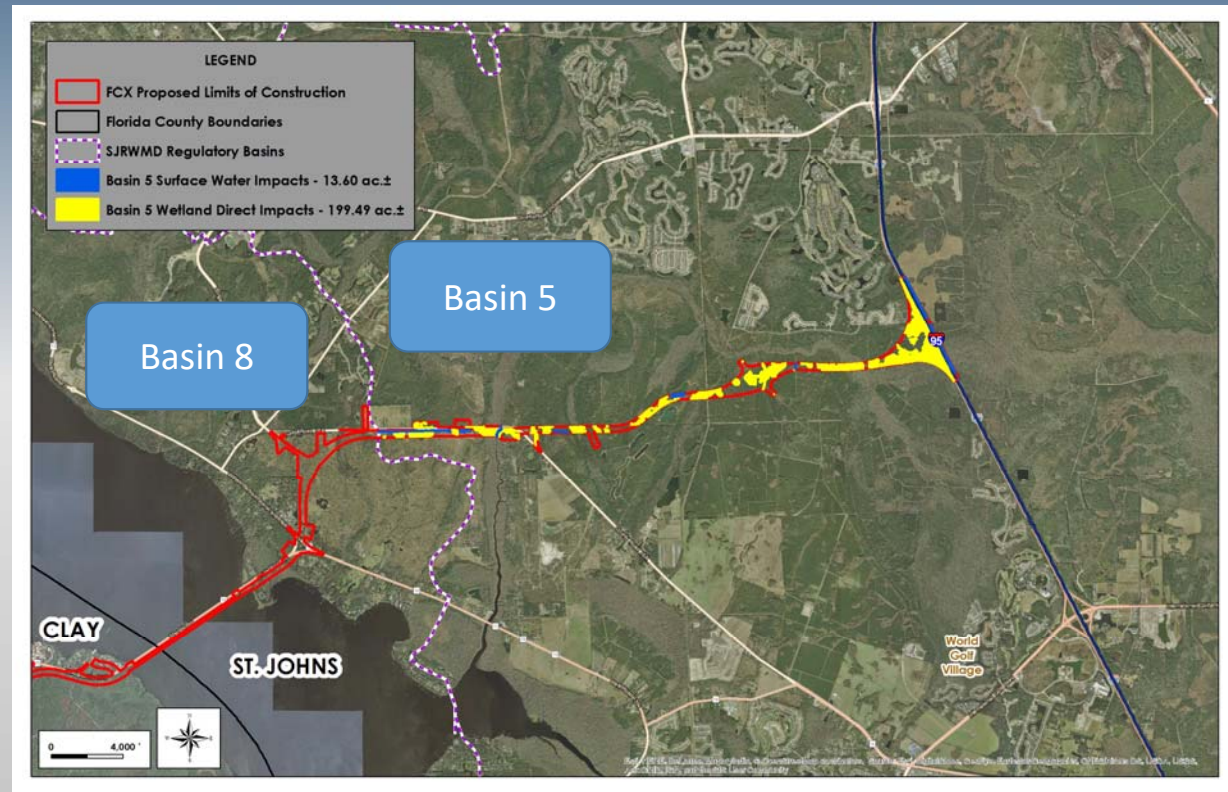
# Estimated Direct Wetland Impacts

- **Basin 8 – 91.91 Acres**
- Mitigation Bank Credit Requirements:
  - 75.97 UMAM



# Estimated Direct Wetland Impacts

- **Basin 5 – 199.49 Acres**
- **Mitigation Bank Credit Requirements:**
  - 147.52 UMAM



# Mitigation Banks Utilized

## ➤ State Credits

- Greens Creek
- Nochaway
- Loblolly
- Lower St. Johns
- Star 4
- Sundew
- Town Branch

## ➤ Federal Credits

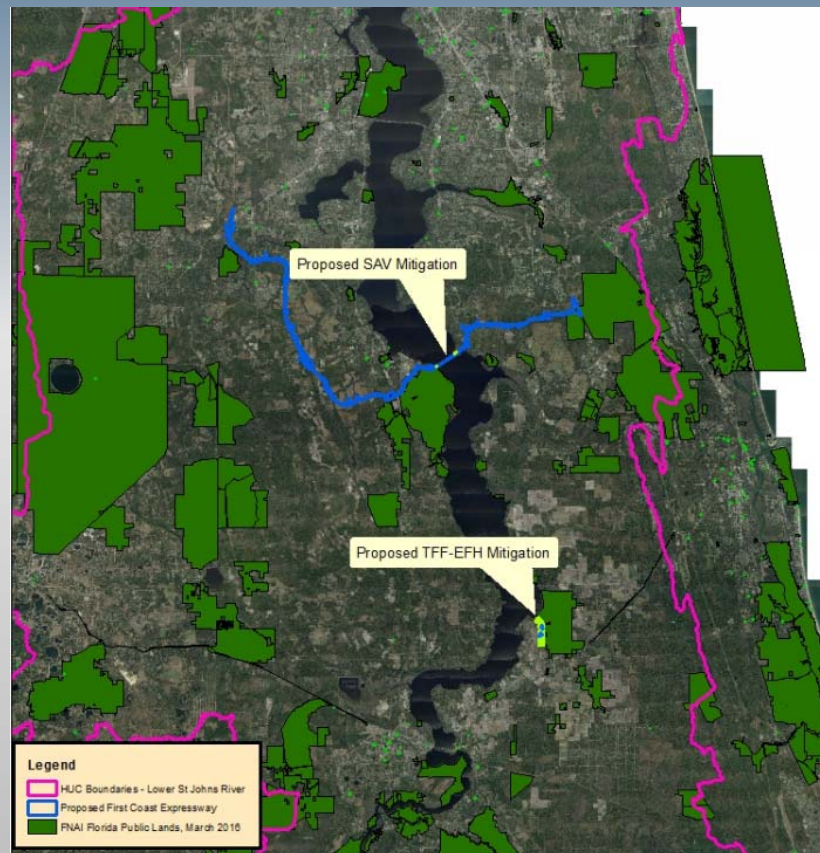
- Loblolly
- Longleaf
- Tupelo
- Sundew





# Submerged Aquatic Vegetation (SAV) & Tidal Freshwater Essential Fish Habitat (EFH)

- SAV & EFH impacts occur within Basin 8
- No SAV or EFH Basin 8 Mitigation Bank credits available
- Restoration & enhancement used to mitigate impacts via Senate Bill



First Coast Expressway

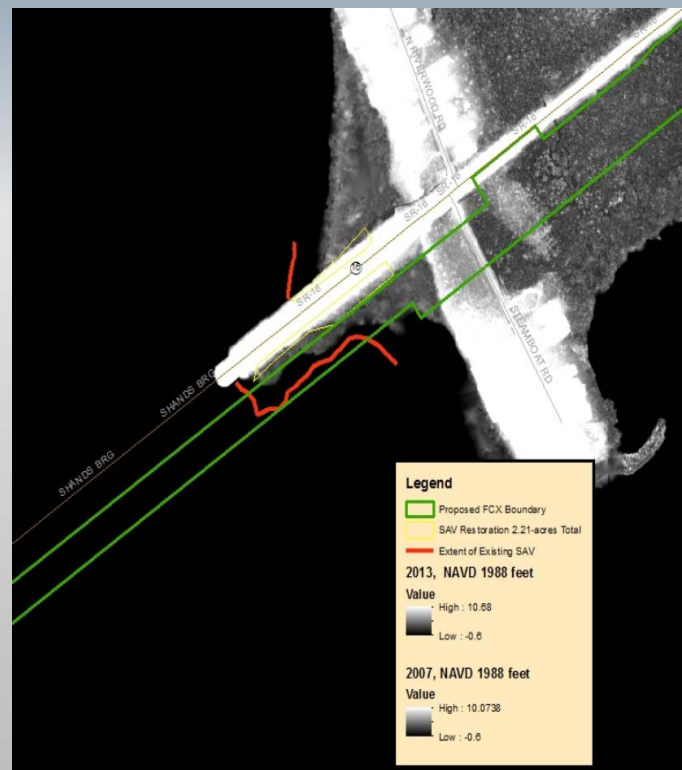
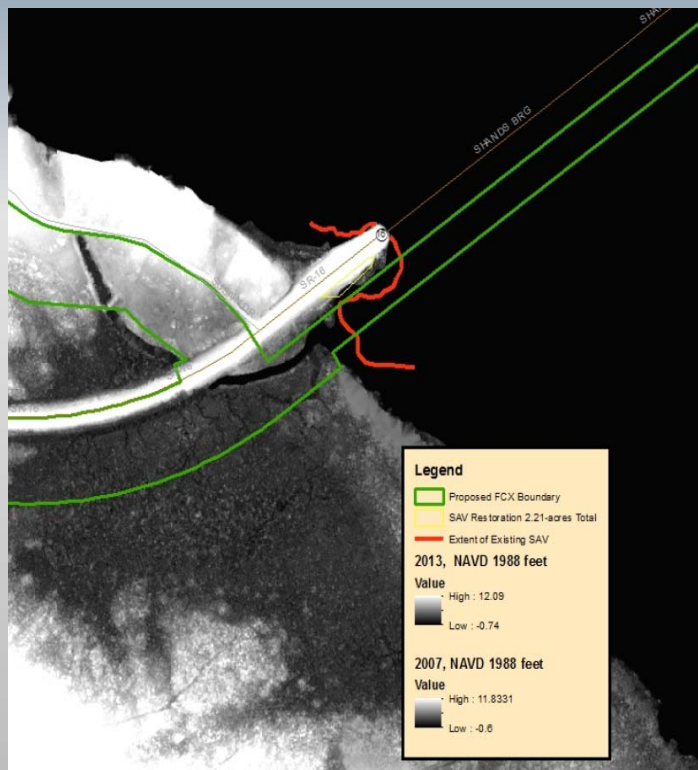
FPN 422938-2-52-01 (St. Johns County) & 422938-3-52-01 (Clay County)





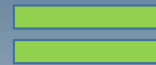
# Submerged Aquatic Vegetation (SAV)

- Survey completed and verified by SJRWMD in April 2016
- 2.21 acres of impacts within proposed ROW



# SAV Mitigation

- Removal of old bridge fill material
- Harvest & transplant existing SAV
- Control of invasive exotic species



2.21 acres of restoration



First Coast Expressway

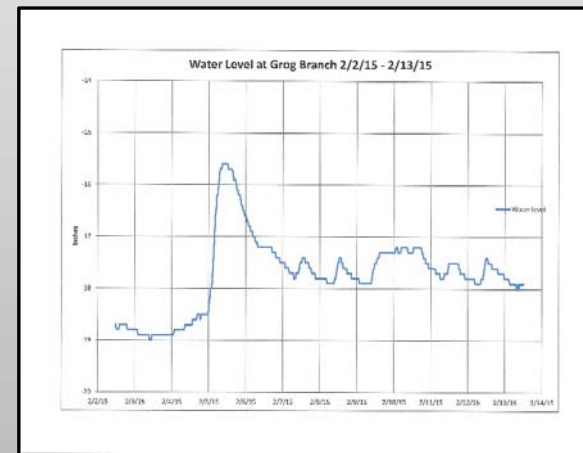
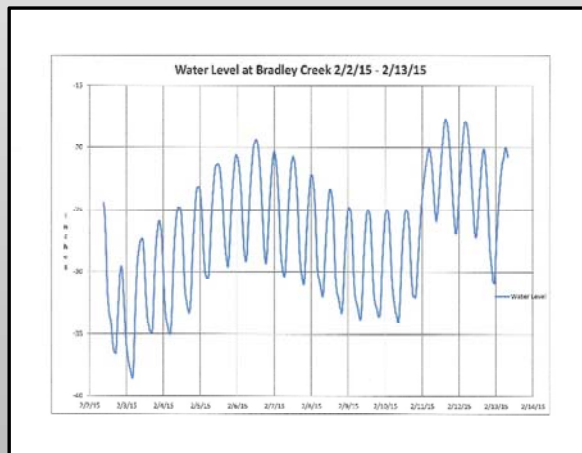
FPN 422938-2-52-01 (St. Johns County) & 422938-3-52-01 (Clay County)



# Tidal Freshwater Essential Fish Habitat (EFH)

➤ Six crossings were determined to be Tidal Freshwater

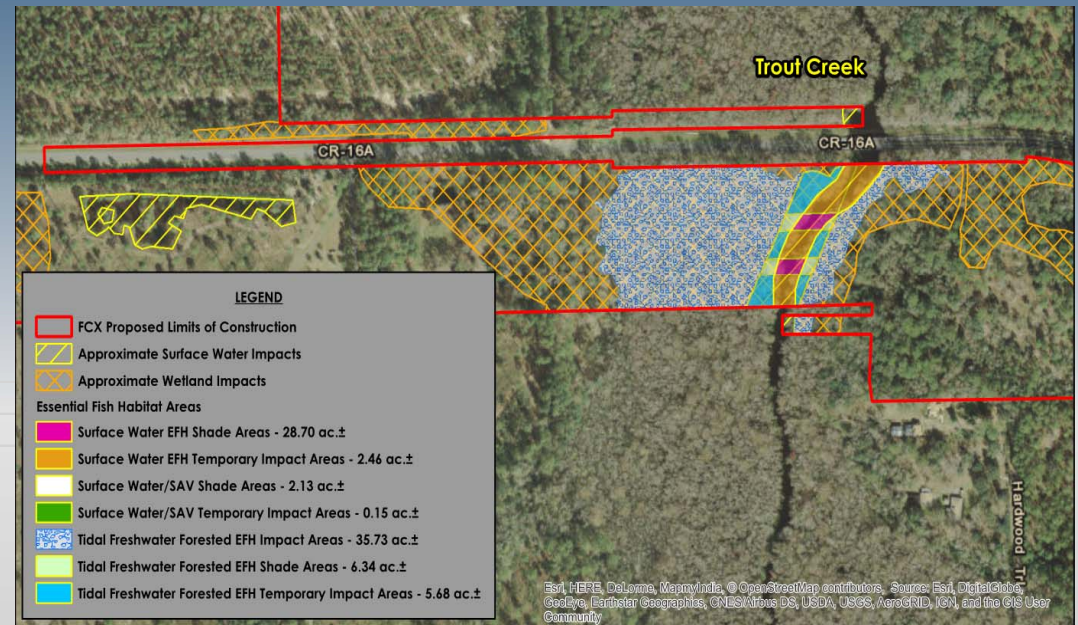
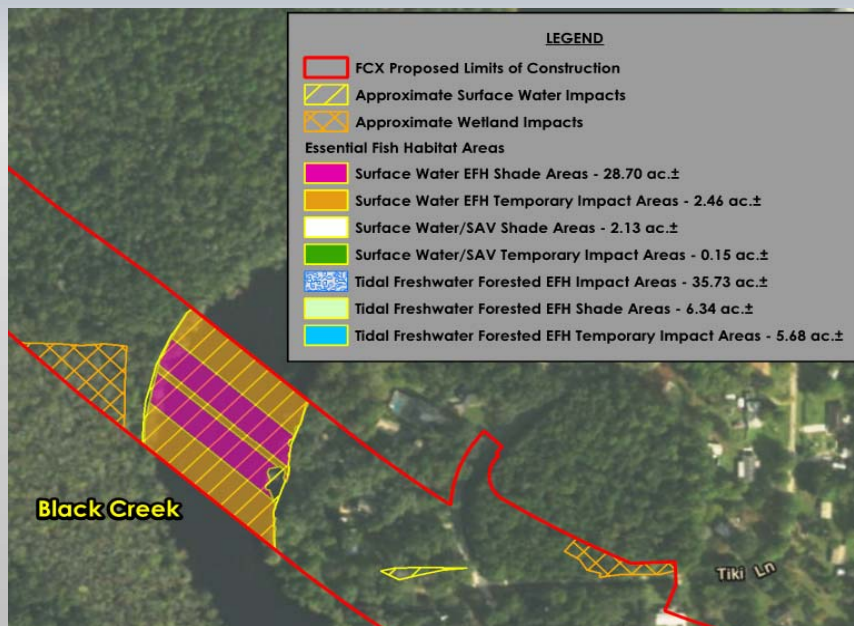
Creek/River System	Tidal Freshwater Forested EFH Impacts	Tidal Freshwater Forested EFH Shade Impacts	Tidal Freshwater Forested EFH Temporary Impacts	Tidal Freshwater Surface Water EFH Shade Impacts	Tidal Freshwater Surface Water/SAV EFH Shade Impacts	Tidal Freshwater Surface Water EFH Temporary Impacts	Tidal Freshwater Surface Water/SAV EFH Temporary Impacts
Trout Creek	4.91	0.14	0.49	0.17	-	0.62	-
St. Johns River	26.82	5.04	3.52	27.22	2.13	-	0.15
Bradley Creek	3.03	0.45	0.65	-	-	-	-
Black Creek	-	-	-	1.31	-	1.84	-
Lower Grog Branch	0.97	0.50	0.76	-	-	-	-
Upper Grog Branch	-	0.21	0.26	-	-	-	-





# Tidal Freshwater Essential Fish Habitat (EFH)

## Black Creek Crossing

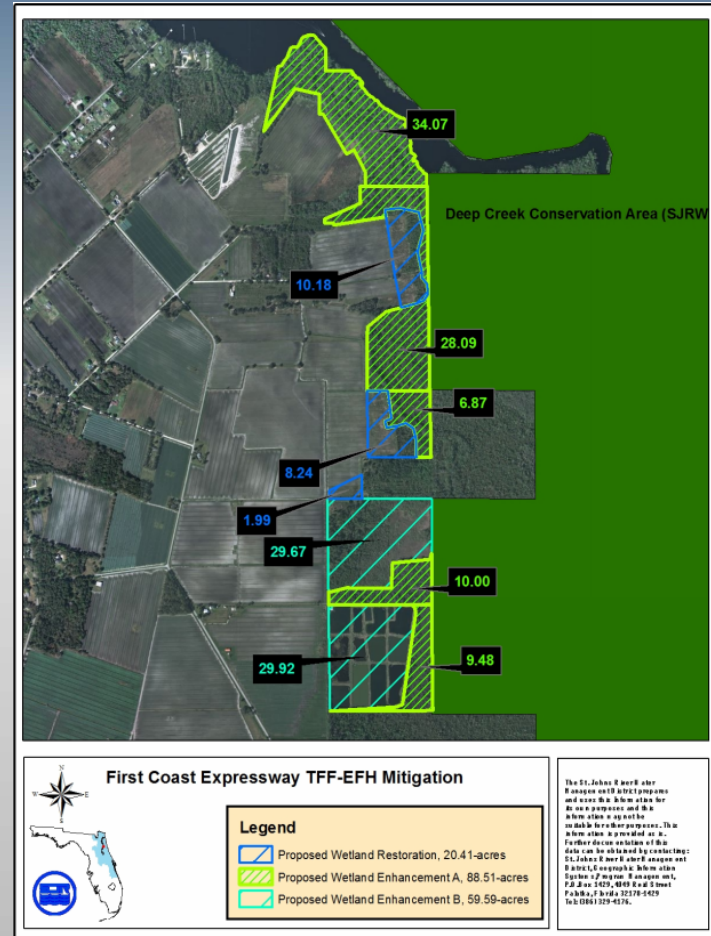


## Trout Creek Crossing

# Tidal Freshwater EFH Mitigation

## ➤ Deep Creek Mitigation Area

- Adjacent to Deep Creek Conservation Area
- Altered agricultural fields to be returned to forested wetlands
- Forested systems to be reconnected to tidal activity associated with St Johns River
- 20.41 acres of restoration
- 148.10 acres of enhancement



# Tidal Freshwater EFH Mitigation

## ➤ Deep Creek Mitigation Area Additional Benefits:

- Reduction of invasive exotic species
- Removal of berms/dikes
- Reconnection of aquaculture ponds to existing floodplains
- Improved water quality

