



Environmental Technical Advisory Team

BROOKS BRIDGE REPLACEMENT STUDY

ETDM #: 14214

Federal Aid Number 4221-085-P

FPID 415474-2-22-01

September 28, 2017

Second ETAT briefing

Brooks Bridge Replacement Study – Project Location on Intracoastal Waterway



ID	BRIDGE
1	Bob Sikes
2	Navarre
3	Brooks
4	Mid Bay
5	Clyde B. Wells

Brooks Bridge Replacement Study – Project Location



Purpose and Need

What is the Purpose of the Study?

- Identify the best solution and location for replacement of the existing Brooks Bridge and secure federal approvals

Why is the Project Needed?

- Structurally deficient
- Does not meet current design standards
- Does not meet Americans with Disabilities Act (ADA) pedestrian/bike requirements



ETDM Project #14214

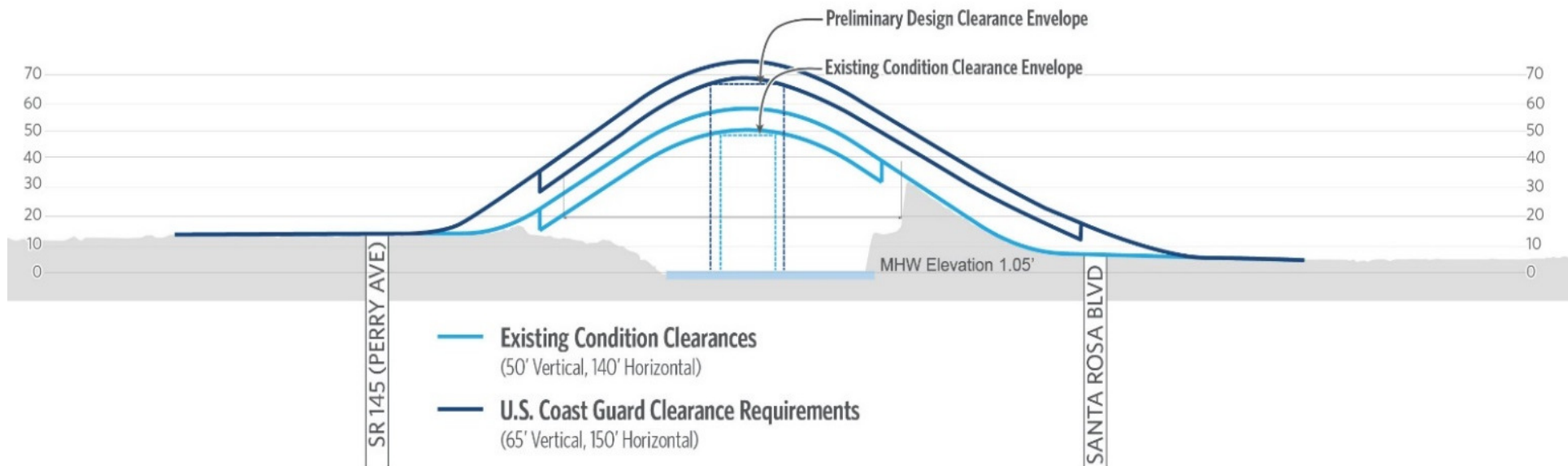
- PD&E Study initiated February 2015
- ETAT review started April 17, 2015
- Programming Screen Summary Report September 28, 2015
- Federal agency involvement
 - FDOT– Lead
 - USCG and USACE- Cooperating
 - NPS – Participating
- Class of Action Determination (October 26, 2015): EA

ETDM Project #14214

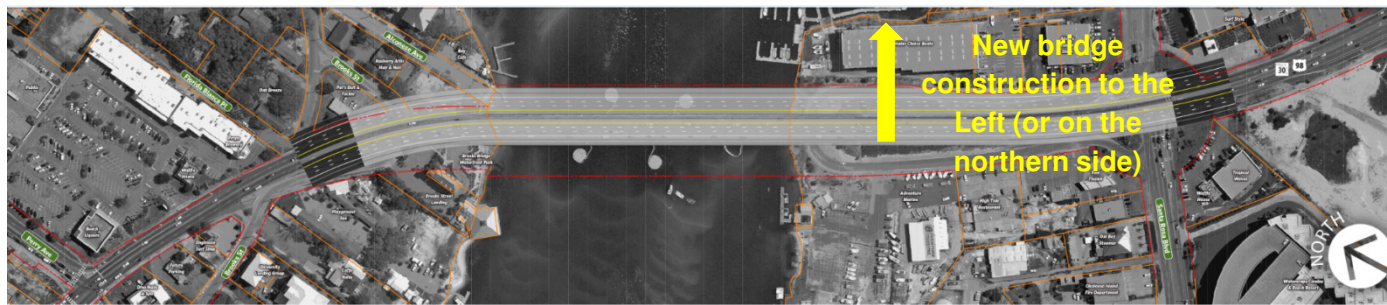
NATURAL											CULTURAL	COMMUNITY								
Air Quality	Coastal & Marine	Contamination	Farmlands	Floodplains	Infrastructure	Navigation	Special Designations	Water Quality & Quantity	Wetlands	Wildlife & Habitat	Historic & Archeological Sites	Recreation Areas	Section 4(f) Potential	Aesthetics	Economic	Land Use	Mobility	Relocation Potential	Social	Secondary Cumulative Effects
2	3	3	N/A	3	2	4	3	3	3	4	3	3	3	2	1	2	2	2	3	2

N/A	No Involvement	3	Moderate
1	Enhanced	4	Substantial
0	None	5	Dispute Resolution
2	Minimal		

Project Considerations: Slope, Height, Clearance

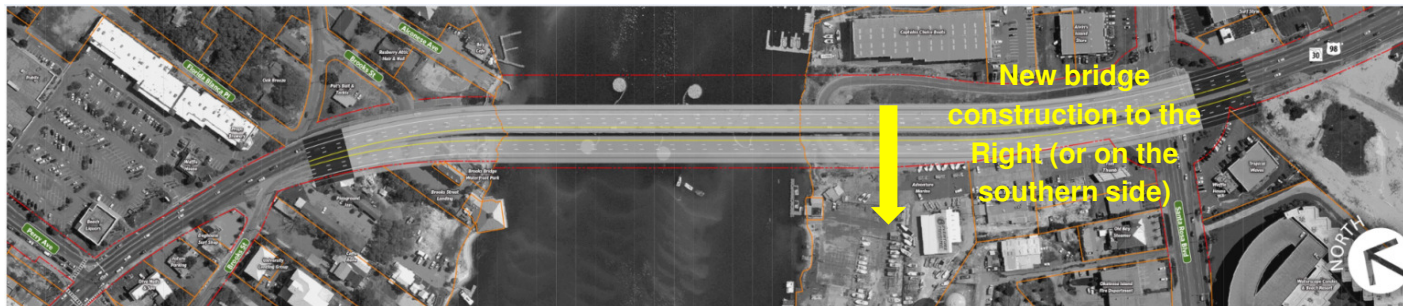


Project Considerations: Alignment

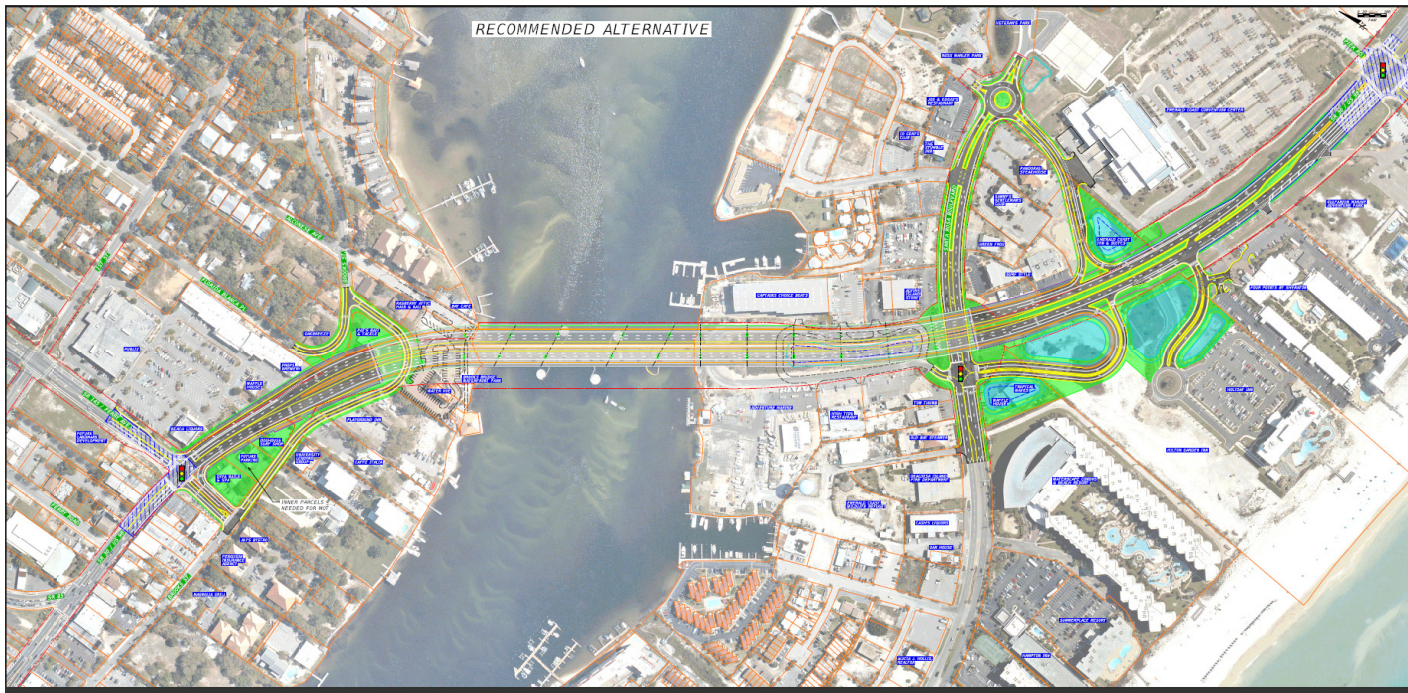


Left Shift

Left Alternative is anticipated to be Proposed Action

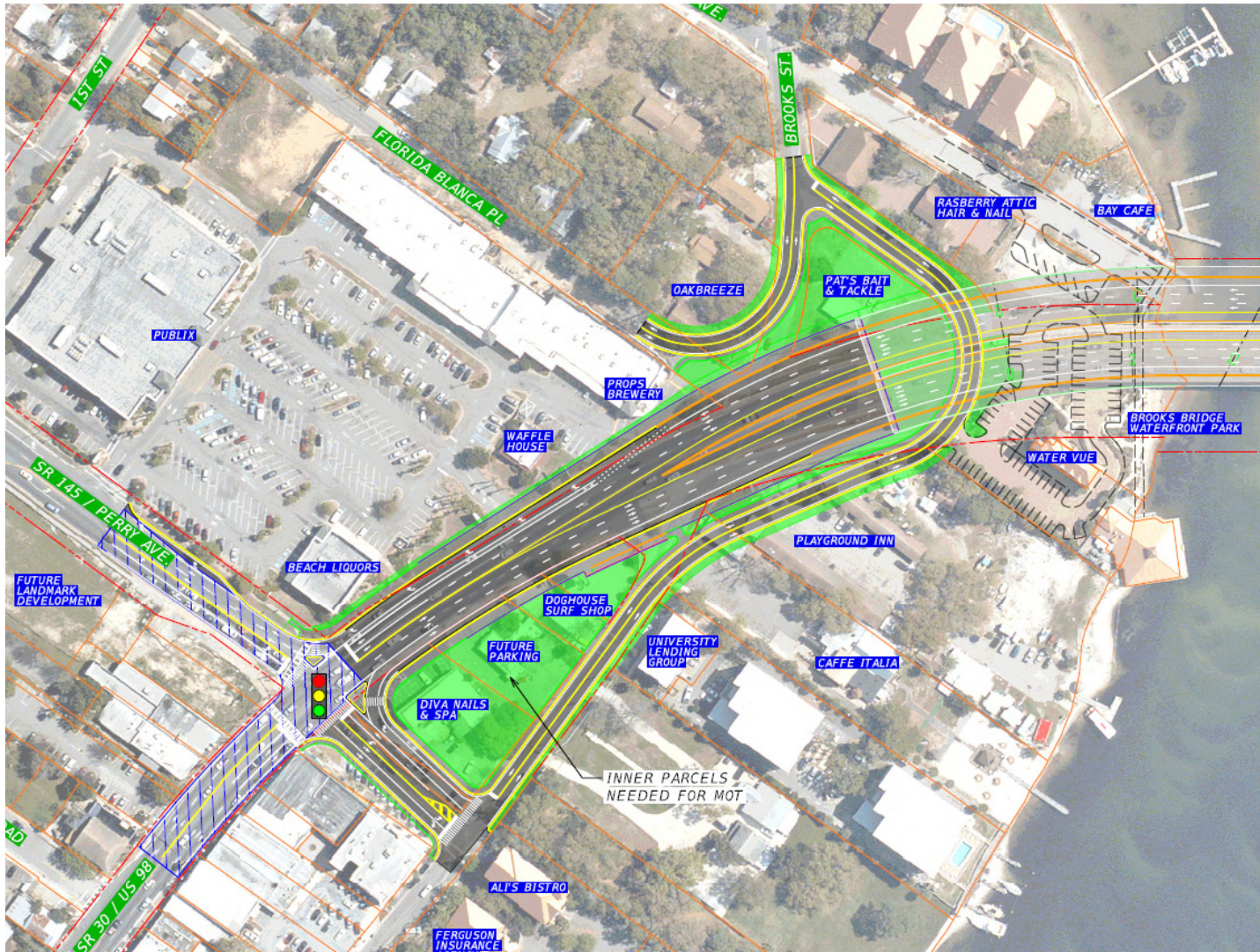


Right Shift



Project Considerations: *Proposed Action*

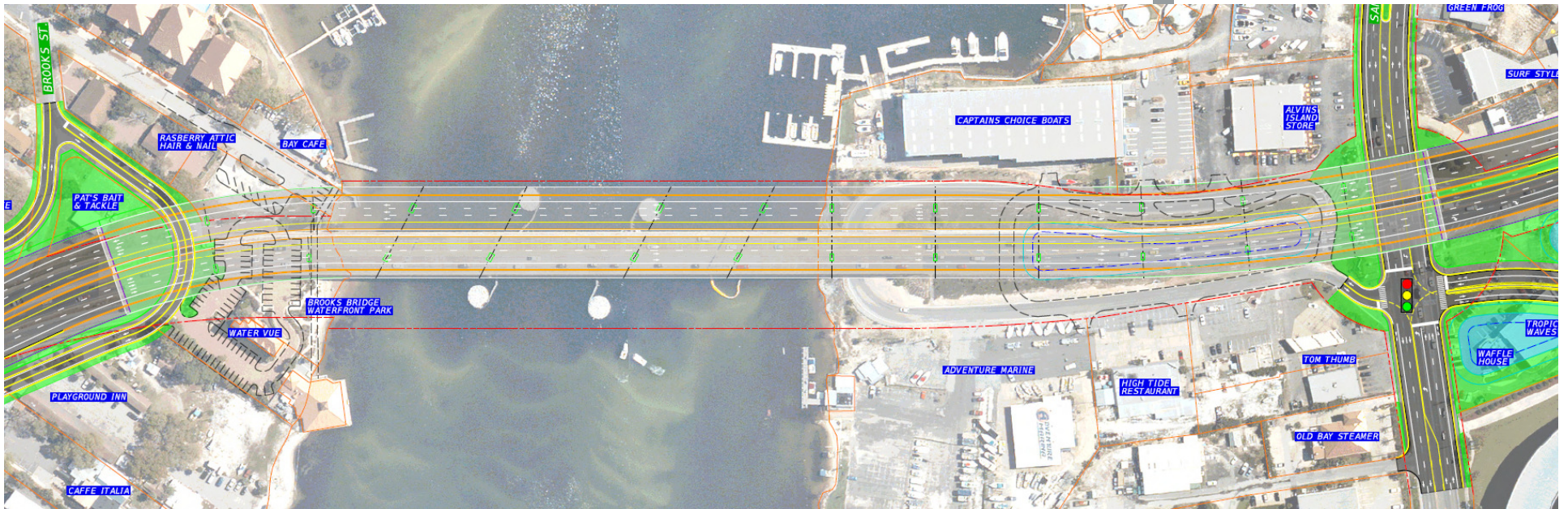
- Left Shift
- Intersection improvements at Perry Ave. and Santa Rosa Blvd.



Project Considerations: *Proposed Action*

- Perry Avenue (SR 145)

Project Considerations: *Proposed Action*

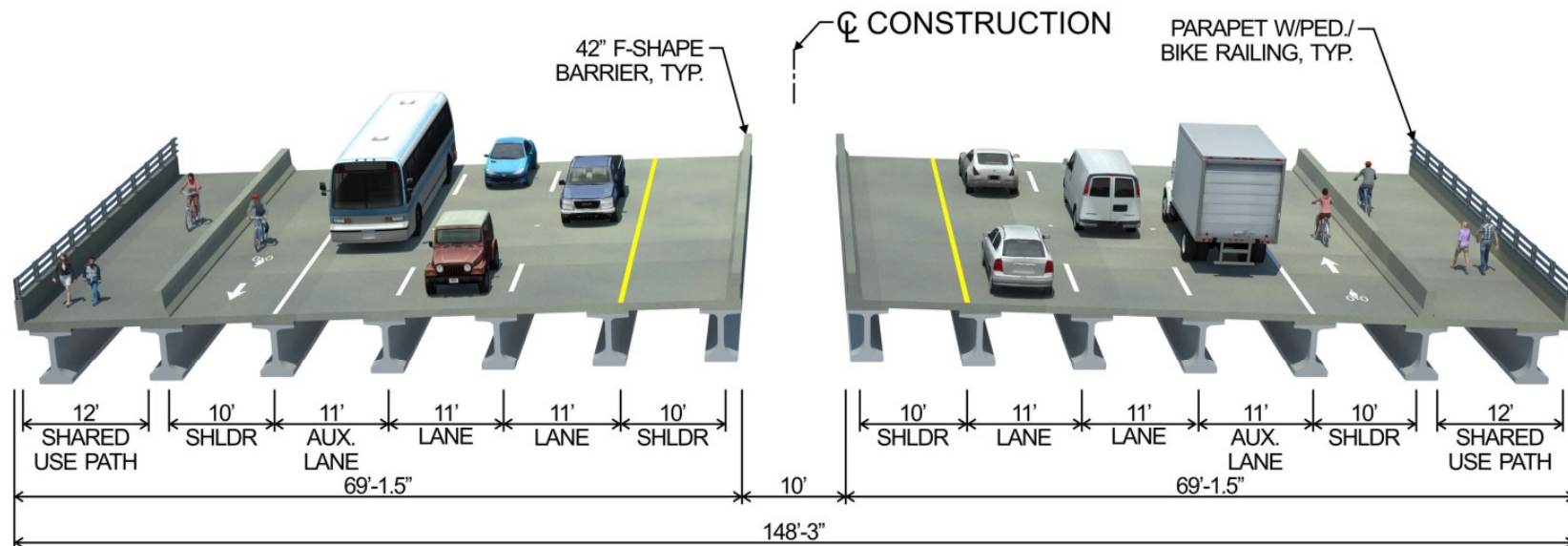




Project Considerations: *Proposed Action*

- Santa Rosa Blvd

Typical Sections



**BROOKS BRIDGE
TYPICAL SECTION**
DIVIDED URBAN ARTERIAL
TWIN BRIDGES WITH 10' GAP
SIX 11' LANES 10' INSIDE/OUTSIDE SHOULDERS
WITH 12' SHARED USE PATH ON BOTH SIDES



Looking South *Towards Okaloosa Island*



Looking West *Towards Downtown Fort Walton Beach* 15

Environmental Impacts

- Fort Walton Beach fishing pier, Gulf Islands National Seashore
- Coastal dune wetlands Okaloosa Island (0.89 ac)
- Essential Fish Habitat wetlands (0.01 ac)
- Submerged Aquatic Vegetation (0.005 ac)
- Gulf sturgeon Critical Habitat – Biological Opinion in process
 - Construction restrictions, noise monitoring and management
- Sea turtles – lighting restrictions
- Manatee – standard provisions
- Contamination sites (4)

Environmental Consultation

- NMFS Section 7 ESA consultation complete
- NMFS EFH mitigation **to be defined**.
- FWS Section 7 ESA consultation **in process**
 - Biological Opinion anticipated.
- FWC consultation complete.
- USCG consultation complete.
- Eglin consultation complete.
- NPS coordination **in process**, Section 4(f) *de minimis* anticipated.
- SHPO coordination complete.

Public Involvement

- **Public Meetings**

- 04/23/15
- 05/17/16

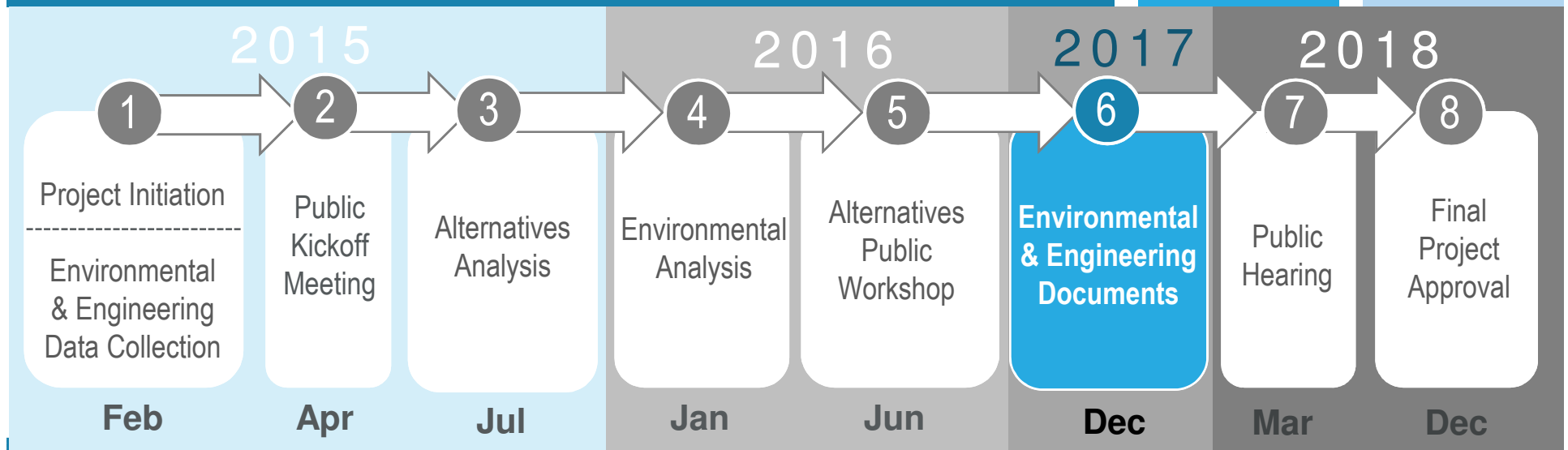
- **Stakeholder Advisory Group Meetings**

- 09/10/15
- 03/03/16
- 06/07/16

- **Okaloosa-Walton Transportation Planning Organization**

- 04/16/15
- 02/18/16
- 08/11/16

Brooks Bridge Replacement Study – Project Schedule



Community Outreach

A continuous community outreach process is integrated into every step of the project to ensure that the corridor residents, businesses, the traveling public and other interested parties have meaningful participation in the process.

What's Next?

- **Complete EA**
 - Biological Opinion
 - Section 4(f) determinations
 - EFH mitigation
- **Public Hearing**
- **Location Design Concept Acceptance / NEPA determination**
- **Design-Build**
 - Right-of-Way funded in FY 19-22 (\$48M)
 - Construction funded beginning in FY 21/22 (\$153M)

Contact Information

FDOT Project Manager

Eric Saggars, PE

HNTB
777 Main Street
Chipley, FL 32428
850-415-9001
esaggars@hntb.com

Environmental Manager

Joy Swanson Pleas

FDOT District 3
1074 Highway 90
Chipley, FL 32428
Toll free (888) 638-0250, ext. 1505
joy.swansonpleas@dot.state.fl.us

HDR Project Manager

Steve Schnell, AICP

200 W Forsyth Street, #800
Jacksonville, FL 32202-4321
(904) 598-8964
steve.schnell@hdrinc.com

Stay Involved: Follow us on  

Email: info@BrooksBridgeReplacement.com

Study Website: <http://www.nwflroads.com>