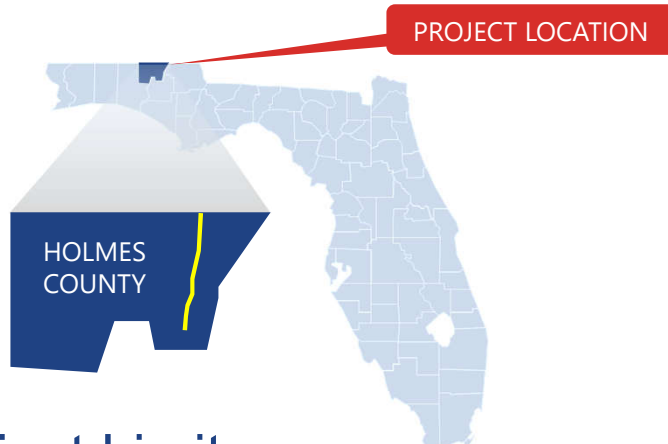


# STATE ROAD (S.R.) 79 PROJECT DEVELOPMENT & ENVIRONMENT STUDY

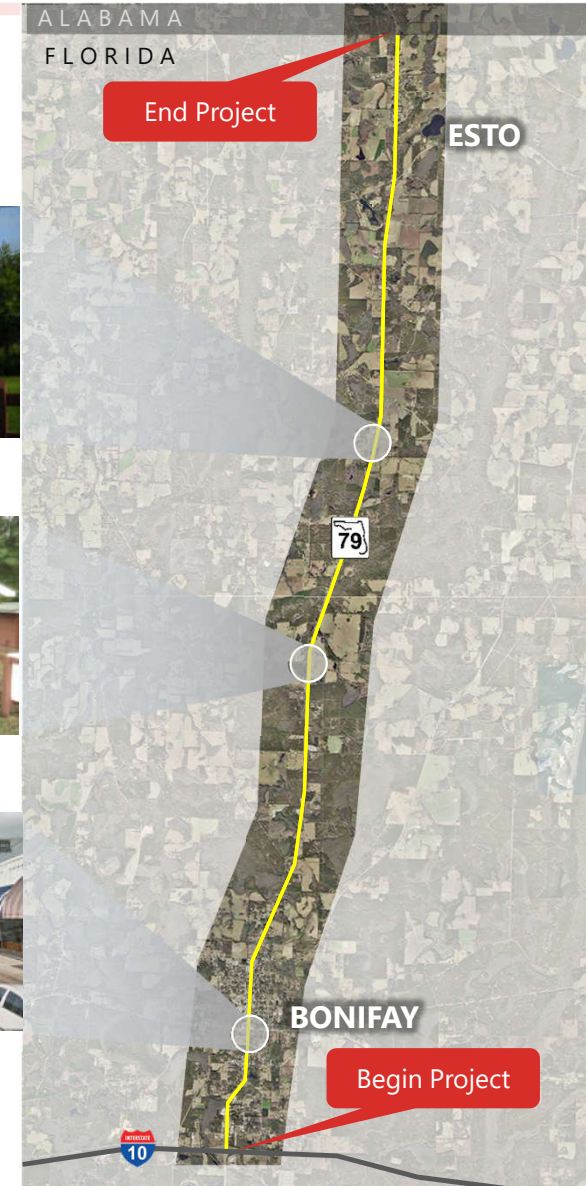
September 28, 2017



# S.R. 79 PD&E Study

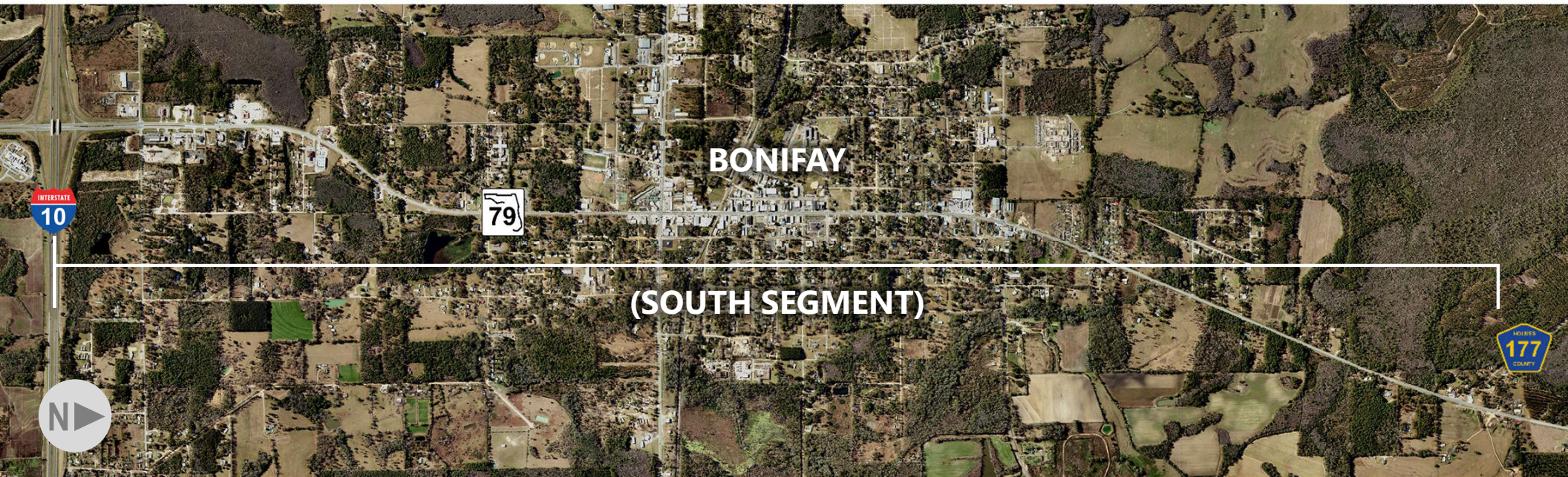


- Project Limits:
  - S.R. 8 (I-10) to Alabama State Line
- Designated an Emerging Strategic Intermodal System (SIS) Connector





## *Alternatives Considered*





## *Eliminated Alternatives – In Bonifay*



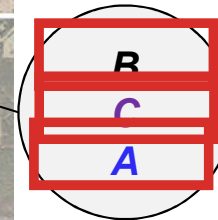
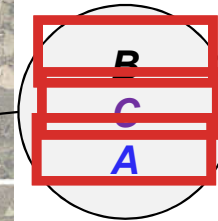
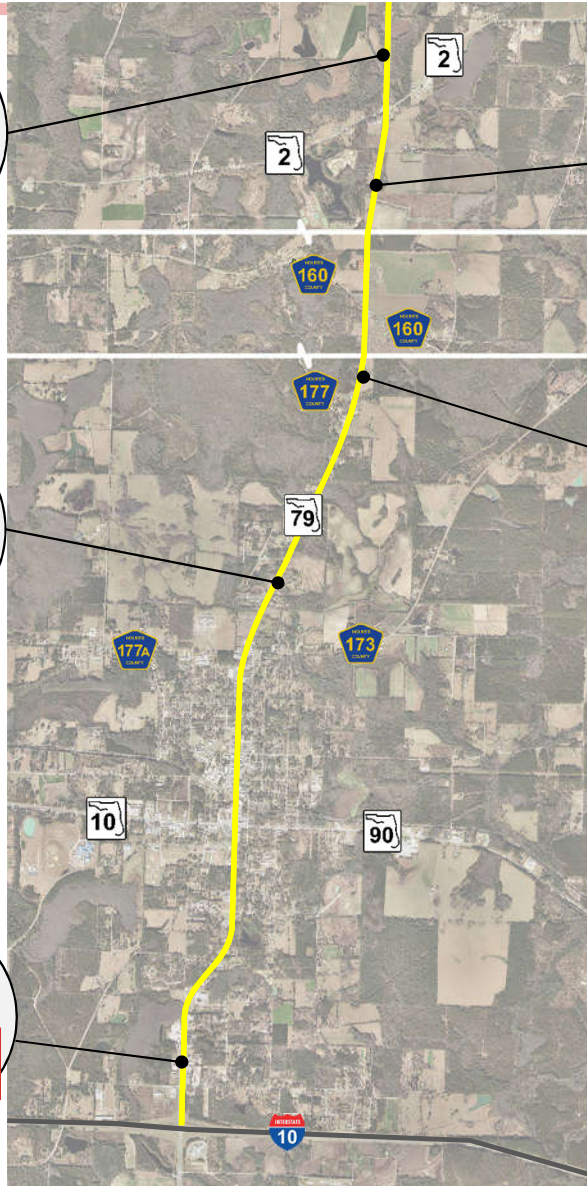
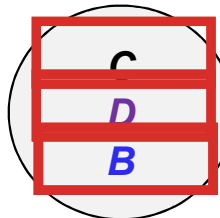
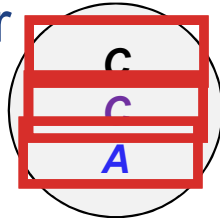
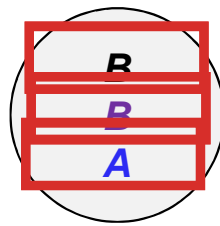


## ***Alternatives – Mainline From Bonifay to Alabama Line***



# Level of Service

- Level of Service (peak hour)  
S.R. 79 Corridor  
– Existing and Future (2045)



## LEGEND:

Existing Level of Service (2015)

SR 79 No-Build Option  
Level of Service (2045)

SR 79 Widening Option  
Level of Service (2045)

## ***Level of Service Requirements For Project Limits***

- **At the conception of the project:**  
Statewide minimum LOS Standards for SIS in project limits: **B**
  - Level of Service Handbook **no longer differentiate between** SIS roadways from other roadways of the State Highway System
  - **Currently:**  
Statewide minimum LOS Standards for State Highway System: **C**
- I-10 to US 90 is the only segment that requires an additional lane to meet the SIS LOS requirements. The remaining project length does not need additional lanes.**







# ***S.R. 79 PROJECT DEVELOPMENT & ENVIRONMENT STUDY***

*Thank You*

