



# Florida Department of Transportation District One Efficient Transportation Decision Making Process

ETAT Webinar

June 21, 2019





# Questions

- Send questions to presenters through the Chat Box
- Someone will be monitoring the questions and if appropriate, we'll attempt to answer it at the time asked. Depending on the question, we may hold it and address it towards the end of the presentation.



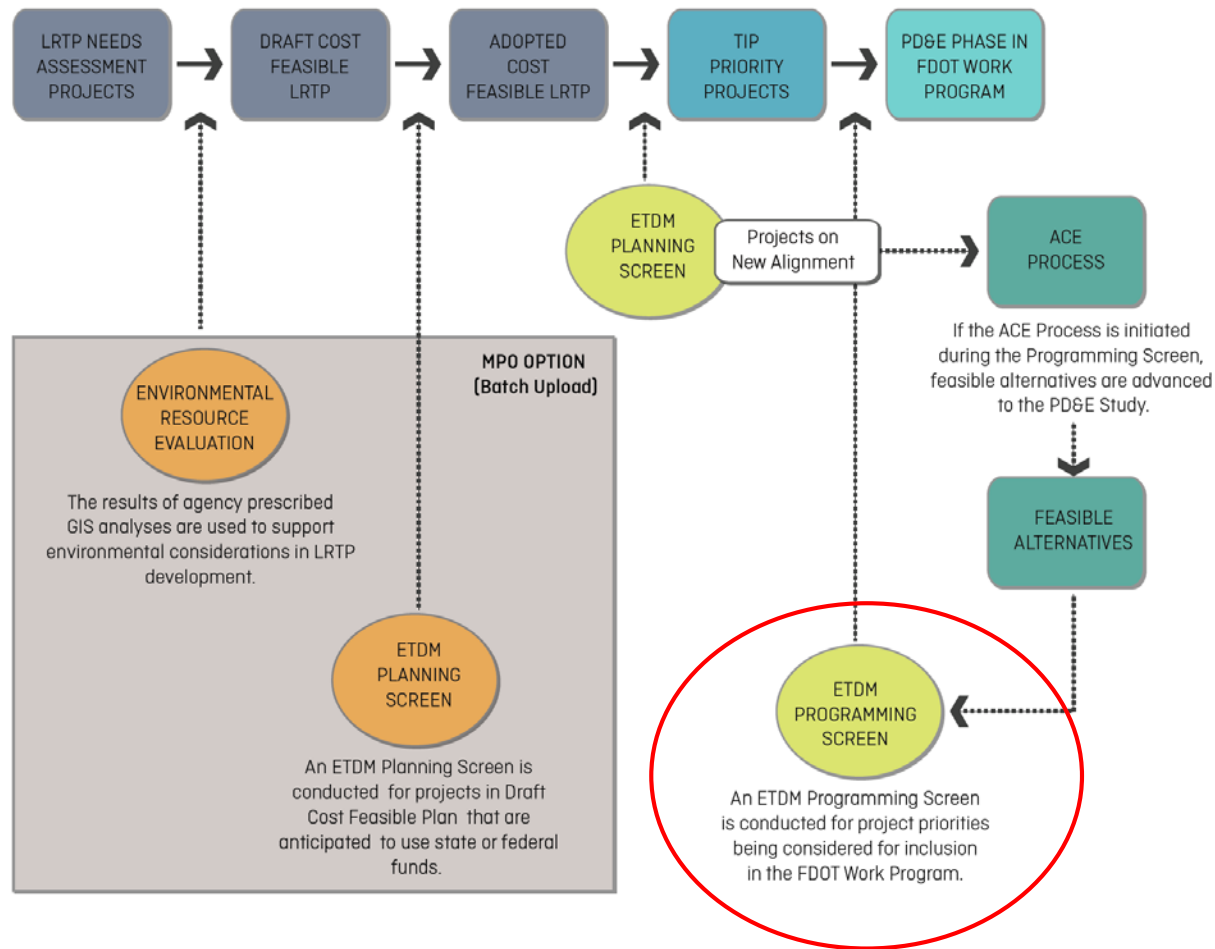


# Agenda

- Welcome/Introductions
  - Sign-in: type name(s) in comment box
  - Type questions in box
- Upcoming ETDM Projects
  - River Road from US 41 to I-75 [Sarasota]
  - US 41 at CR 865 (Bonita Beach Road) [Lee]
  - SR 78 from I-75 to SR 31 [Lee]
  - SR 789 (Little Ringling) from Bird Key Drive to Sarasota Harbor West [Sarasota]



# Florida's ETDM Process





# River Road

ETDM #14386 / FM #442767-1 – River Road [Sarasota]

Project Limits: US 41 to I-75

Description: Widen 2 to 4 Lanes

Programming Screen: July 2019



*River Road facing south near Jelks Preserve*



*River Road facing north near US 41*

# River Road

## Project Location





# River Road

## Purpose of the Project

- Address deficient roadway capacity to relieve existing & future congestion
- Correct roadway design deficiencies
- Enhance safety conditions
- Enhance transportation network connectivity



*Traffic entering River Road from Stoneybrook at Venice*



*Traffic stopped on southbound River Road at US 41*

# River Road

## Need for the Project

- **Capacity/Transportation Demand:** Improve Operational Conditions
- **Roadway Deficiencies:** Address Substandard Roadway Design Elements
- **Safety:** Enhance Emergency Evacuation and Response Times/Incident Management
- **Area Wide Network/System Linkage:** Enhance Network Functionality and Connectivity



*Houses under construction and for sale at The Sanctuary at Stoneybrook*



*No shoulders or sidewalks present along River Road*



# River Road

## Community/Cultural Considerations

- **Land Uses:**
  - Recreation/Conservation (west)
  - Agricultural/Rural
  - Residential (east)
- **Community Features:**
  - 2 Planned Unit Developments
  - Subdivisions/2 Mobile Home Parks
  - 1 Neighborhood Park & Public Lands
  - Trails
  - Tamiami Trail Scenic Highway
- **Cultural Features:**
  - 3 Previously Recorded Resources
  - 5 Potential Unrecorded Resources
  - No Systematic Survey
- **Potential Section 4(f) Involvement**



*Ramblers Rest RV Resort*



*Jelks Preserve Trailhead*



*Blue Herron Park*



*Grand Palm Subdivision*



*The Sanctuary at Stoneybrook Housing Construction*

# River Road

## Environmental Considerations

- **Physical Issues:**

- 1 Solid Waste Facility
- 2 Closed Fuel Stations
- Utilities
  - Power lines on east side
  - Cable markers on west side
  - Utility cabinet boxes, traffic lights, street lights, pedestrian signals concentrated at intersections
- Noise and Vibrations
  - Residential structures setback or behind earthen berms
- Right-of-Way anticipated
- Potential access restrictions to recreational features
- Drainage to be addressed
- Connections to proposed I-75 managed lanes to be addressed



*Intersection of River Road and US 41*

# River Road

## Environmental Considerations

- **Natural Issues:**

- Wildlife and Habitat

- Federally Listed Species*

- Crested caracara
      - Piping Plover
      - Red knot
      - Wood stork
      - Florida scrub jay
      - Everglade snail kite
      - Eastern indigo snake
      - Florida panther
      - Loggerhead sea turtle
      - West Indian manatee
      - Gulf sturgeon
      - American crocodile
      - American Alligator

- State Listed Species*

- Gopher tortoise
      - Wading birds

- Other Species*

- Florida black bear
      - Bald eagle
      - Osprey

- Conservation Lands*

- Jelks Preserve
      - Sleeping Turtles Preserve South



*Sleeping Turtles Preserve South  
within 100 feet of project*



*Myakka River = critical manatee habitat*



*Florida scrub jay*



*Eastern indigo snake*



# River Road

## Environmental Considerations

- **Natural Issues:**

- Wetlands and Surface Waters
  - Myakka River*
    - Outstanding Florida Water designation within 200 feet
    - Wild and Scenic River designation within half-mile

- Forested and Herbaceous Wetlands*

- Adjacent to existing roadway
    - Myakka Mitigation Bank
  - Majority of project within 100-Year Floodplain



*Myakka River*



*Wetlands along River Road*

# US 41 at CR 865 (Bonita Beach Road)

ETDM #6291 / FM #444321-1 – US 41 at CR 865 (Bonita Beach Road) [Lee]

Description: Intersection Improvement

Programming Screen: July 2019



US 41 at CR 865 (Bonita Beach Road) facing south

# US 41 at CR 865 (Bonita Beach Road)

## Project Location





# US 41 at CR 865 (Bonita Beach Road)

## Purpose of the Project

- Address deficient operational capacity to relieve existing & future congestion
- Enhance regional and local mobility
- Enhance safety conditions
- Improve multi-modal access



*Traffic on CR 865 (Bonita Beach Road) approaching US 41*



*Evacuation route sign on US 41*

# US 41 at CR 865 (Bonita Beach Road)

## Need for the Project

- **Capacity/Transportation Demand:** Improve Operational Conditions
- **Area Wide Network/System Linkage:** Improve Traffic Mobility and Transportation Network Access
- **Safety:** Enhance Emergency Evacuation and Response Times & Reduce Mode Conflicts
- **Modal Interrelationships:** Enhance Mobility Options and Multi-Modal Access



*Traffic on US 41 at CR 865 (Bonita Beach Road)*



*Bicyclists on US 41*

# US 41 at CR 865 (Bonita Beach Road)

## Community/Cultural Considerations

- **Land Uses:**

- Commercial/Retail/Office
- Vacant Non-Residential
- Public/Semi-Public, Residential, Industrial, Institutional (smaller amounts)

- **Community Features:**

- 2 Developments of Regional Impact
- 9 Planned Unit Developments
- Government facilities (city hall, post office, fire station, etc.)
- 1 Community Center
- 1 Religious Center
- Recreational Features (country clubs, trails, boat ramps, etc.)
- Heavy Pedestrian/Bicycle Traffic

- **Cultural Features:**

- Limited Proximate Cultural Resources



*Shopping plaza on CR 865 (Bonita Beach Road)*



*St. Leo The Great Catholic Church*



*Spanish Wells Country Club*



# US 41 at CR 865 (Bonita Beach Road)

## Environmental Considerations

- **Physical Issues:**

- Extensive Utilities  
(power lines, cable markers, utility cabinet boxes, traffic lights, street lights, pedestrian signals, etc.)
- Contamination
  - Gas stations
  - Dry cleaners
- Noise & Vibrations
  - Health care facilities
  - Eye care facilities
- Right-of-Way anticipated
- Potential access restrictions to businesses
- Drainage & signalization to be addressed



*Utilities present at intersection of US 41 and CR 865 (Bonita Beach Road)*



*Drainage ditch along east side of US 41*

# US 41 at CR 865 (Bonita Beach Road)

## Environmental Considerations

- **Natural Issues:**

- Wildlife and Habitat

- Federally Listed Species (IPaC)*

- American crocodile
      - Wood stork (within Core Foraging Area)
      - Florida bonneted bat
      - Florida panther
      - Florida scrub jay
      - Everglade snail kite
      - Eastern indigo snake
      - Red knot
      - Red cockaded woodpecker
      - Piping plover
      - Kemp's ridley/Loggerhead (no habitat)

- State Listed Species*

- Wading birds

- Wetlands and Surface Waters

- No wetlands within or adjacent to project



Wood stork



Wood stork habitat

# SR 78

ETDM #9811 / FM #444937-1 – SR 78 [Lee]

Project Limits: I-75 to SR 31

Description: Widen 2 to 4 lanes

Programming Screen: August 2019



*Traffic from SR 31 traveling west on SR 78*



# SR 78

## Project Location



# SR 78

## Purpose of the Project

- Address deficient roadway capacity to accommodate future travel demand
- Correct roadway design deficiencies
- Enhance safety conditions
- Enhance transportation network connectivity



*Typical section of SR 78 facing east*



# SR 78

## Need for the Project

- **Capacity/Transportation Demand:** Improve Operational Conditions
- **Roadway Deficiencies:** Address Substandard Roadway Design Elements
- **Safety:** Enhance Emergency Evacuation and Response Times/Incident Management
- **Area Wide Network/System Linkage:** Enhance Network Functionality and Connectivity



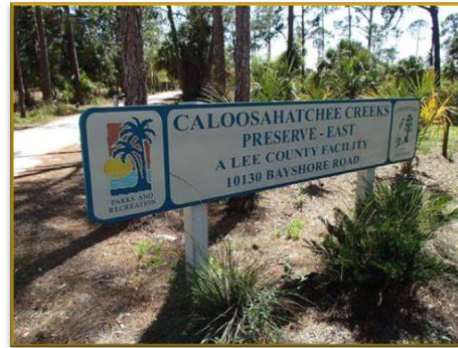
*Trucks from I-75 traveling east on SR 78*



## Community/Cultural Considerations

### • Community Features:

- 1 Census Designated Place
  - Fort Myers
- 1 cultural center
  - ECHO Library
- 1 civic center
  - Lee County Civic Center
- 1 fire station
  - Station 131
- 2 mobile home and RV parks
  - Lee Civic Center Campground
  - Upriver Campground Resort
- 1 Public Land
  - Caloosahatchee Creeks Preserve
- 1 school
  - ECHO Inc.
- 1 social service facility
  - Lee County Sheriff's Posse Inc.
- 2 religious centers
  - All Saints Byzantine Catholic Church
  - New Hope Christian Church
- 1 Office of Greenways and Trails (OGT) Hiking Trails Priority
- 2 OGT Multi-Use Trails Opportunities
  - Caloosahatchee Trail
  - SR 31 Multiuse Trail Corridor
- 1 OGT Paddling Trail Opportunity
  - Okeechobee Waterway Trail



*Caloosahatchee Creeks Preserve – East*



*Bayshore Fire Department, Station 131*



*Lee County Posse Arena*



*Lee County Civic Center*

## Community Considerations (continued)

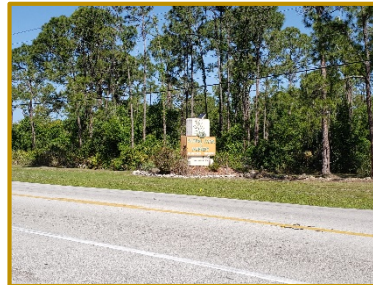
- **Land Uses**

- Residential
  - ☐ 9 PUDs
  - ☐ Rural and Sub-Outlying Suburban
  - ☐ Babcock Development
  - ☐ Bay Point Yacht Club
- Vacant Residential
- Public / Semi-public
  - ☐ Caloosahatchee Creeks Preserve
- Agricultural
  - ☐ Small horse farms
  - ☐ Plant nurseries
  - ☐ Cattle grazing
  - ☐ Citrus groves



Google, Inc., 2016

*Caloosahatchee River*



*Global Farm & Nursery*



Targetroofers.com, 2017

*Bay Pointe Yacht and Racquet Club Condos*

# SR 78

## Environmental Considerations

- **Physical Issues:**

- Utilities

- Power lines on south side & both sides
    - Cable markers present
    - Gas pipeline present at SR 78 and SR 31 intersection
    - Utility cabinet boxes, traffic lights, street lights, pedestrian signals concentrated at intersections

- Noise & Vibrations

- Residential structures abut the roadway

- Right-of-Way anticipated

- Potential access restrictions to residences, businesses & recreational features

- Drainage to be addressed

- Connections to proposed I-75 managed lanes & SR 31 (Wilson Pigott Bridge) replacement to be addressed



*Houses and utilities abutting SR 78*



*Wilson Pigott Bridge*



## Environmental Considerations

- **Natural Issues:**

- Wildlife and Habitat

- Federally Listed Species (IPaC)*

- American crocodile
      - Smalltooth sawfish (critical habitat within 100')
      - Florida bonneted bat
      - Florida grasshopper sparrow
      - West Indian manatee
      - Red cockaded woodpecker
      - Florida scrub jay
      - Wood stork (within Core Foraging Area)
      - Eastern indigo snake
      - Crested caracara

- State Listed Species*

- Wading birds
      - Gopher tortoise
      - Sherman's fox squirrel

- Other Species*

- Florida black bear
      - Bald eagle
      - Osprey



*Florida black bear*

- Conservation Lands*

- Caloosahatchee Creeks Preserve [National Park Project - Section 4(f) & Section 6(f) apply]



*Gopher tortoise*



*Caloosahatchee Creeks Preserve*

# SR 78

## Environmental Considerations

- **Natural Issues:**

- Wetlands and Surface Waters
  - Caloosahatchee River in close proximity
  - Wetlands are primarily within river floodplain
  - Little Pine Island Mitigation Bank services the project area



*Proximity of Caloosahatchee River to SR 78 project*



*Wetlands within Caloosahatchee River floodplain*

# SR 789 (Little Ringling)

ETDM #14384 / FM #436680-1 – SR 789 (Little Ringling) [Sarasota]

**Project Limits:** Bird Key Drive to Sarasota Harbor West

**Description:** Bridge reconstruction/rehabilitation to accommodate multi-modal improvements (no capacity)

**Programming Screen:** August 2019



SR 789 (Little Ringling) northbound

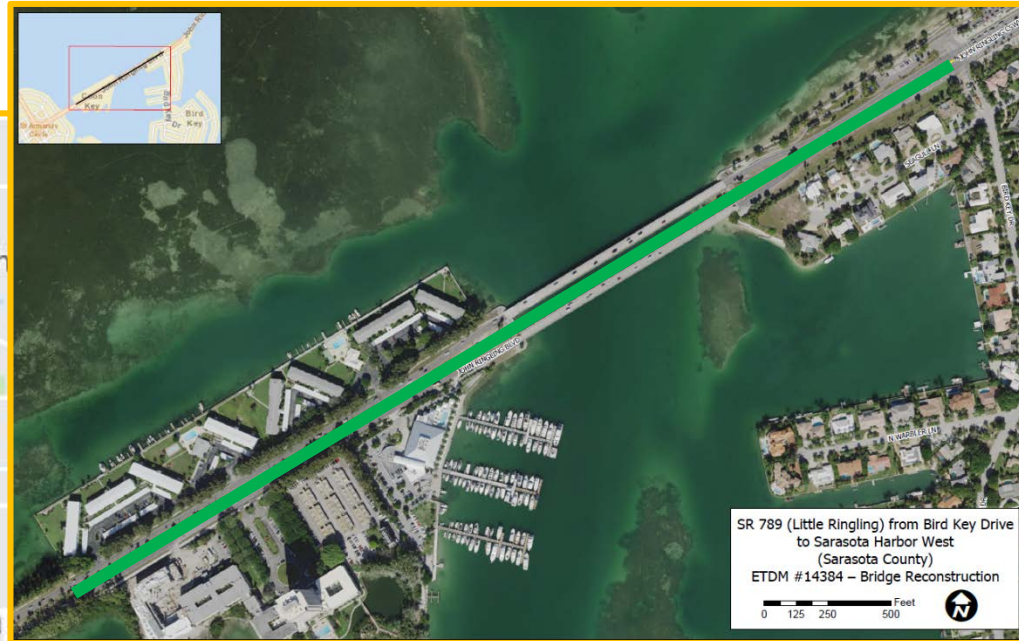
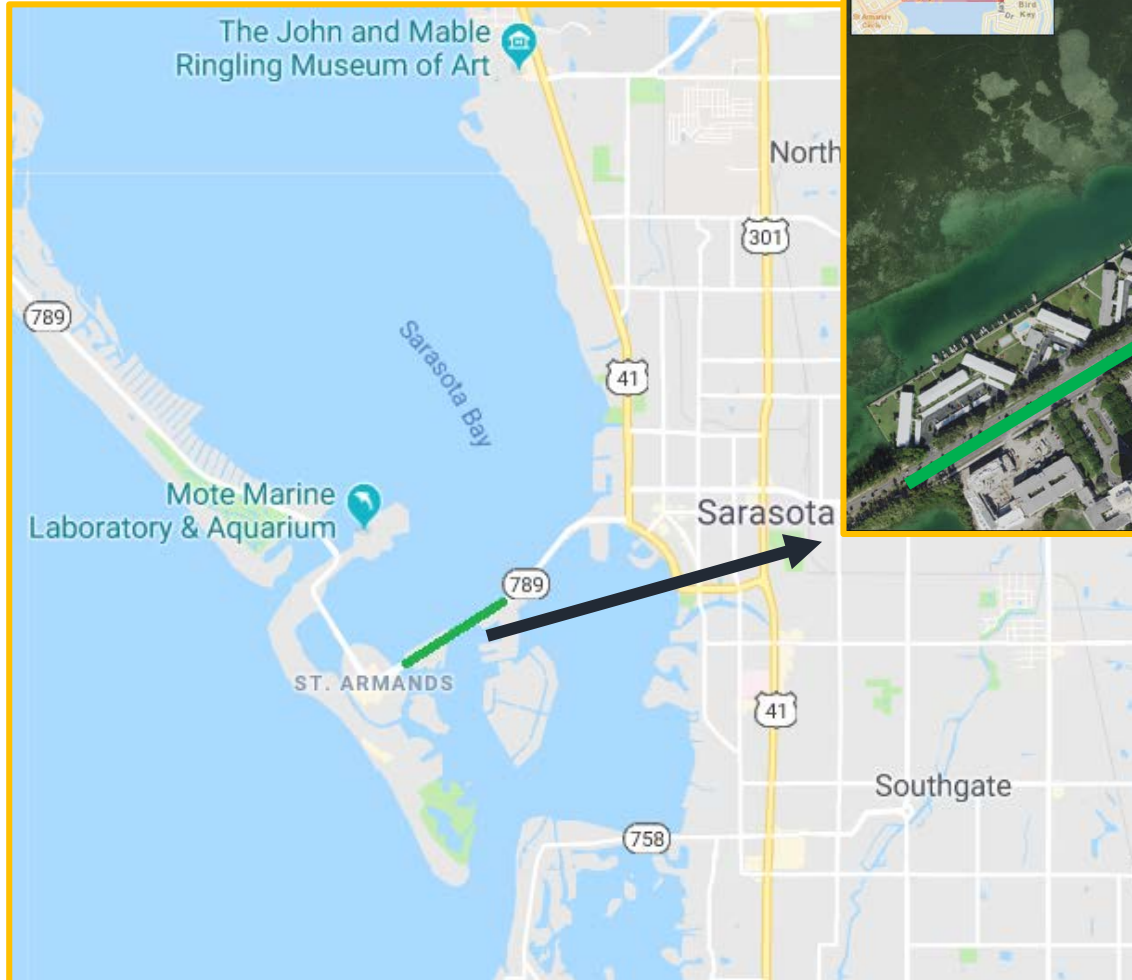


SR 789 Little Ringling view south of bridge



# SR 789 (Little Ringling)

## Project Location



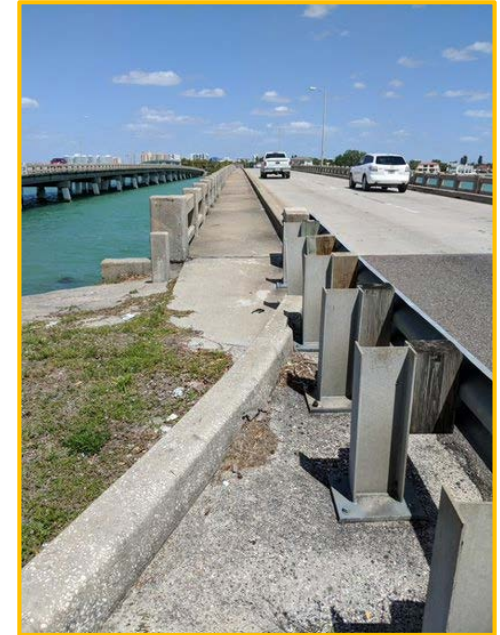
# SR 789 (Little Ringling)

## Purpose of the Project

- Identify the optimal solution for a structure in need of repairs due to aging infrastructure and a need for greater multimodal transportation access to connect nearby neighborhoods and recreational facilities (Ringling Bridge Causeway Park and Bird Key Yacht Club)



SR 789 (Little Ringling) southbound



SR 789 (Little Ringling) northbound – view of existing sidewalk infrastructure on bridge

# SR 789 (Little Ringling)

## Need for the Project

- **System Linkage: Address Operational Deficiencies –**
  - Bridge has been deemed operationally deficient, particularly for transit - Constrained Roadway (No widening desired)
  - Bridge Sufficiency Rating:
    - NB 78.1 / SB 77.9
  - Inspection reports deem bridge Functionally Obsolete (FO)
- **Safety: Improve Emergency Evacuation and Response Times –** SR 789 plays a critical roles in facilitating evacuation between downtown Sarasota and St. Armand's Key and Lido Key



Side view of SR 789 (Little Ringling bridge)



# SR 789 (Little Ringling)

## Community/Cultural Considerations

- **Community Features:**
  - 1 Census Designated Place - Sarasota
  - 2 Office of Greenways and Trails (OGT) Hiking Trail Opportunities
    - John Ringling Trail, Long Boat Key Trail
  - 2 OGT Multi-Use Trail Opportunities
    - John Ringling Trail, Sarasota Bay Corridor
  - 1 OGT paddling trail opportunity
    - Paddle Sarasota Blueway
  - 2 bus transit routes
    - Routes 4 and 18
  - 2 Local FL Parks and Recreational Facility Boundaries
    - Bird Key Park South / Bird Key Park
  - 1 National Park Project
    - West Murt Bird Key / Coon Key Phase I
  - 1 group health care facility [nursing home]
  - 2 homeowner and condominium associations
  - 1 marina
    - Sarasota Yacht Club
- **Cultural Features:**
  - One Florida Site File Archaeological or Historic Site was determined NRHP-ineligible [Cedar Point Midden]
  - Two SR 789 (Little Ringling) over Sarasota Bay Bridges (170022 and 170951) were determined NRHP-ineligible
- **Land Uses:**
  - Primarily residential and recreational
  - St. Armands Circle [major retail destination] nearby



*Bird Key Park*



*Little Ringling Multi-use Trail*

# SR 789 (Little Ringling)

## Environmental Considerations

- **Natural Issues:**

- Sarasota Bay Estuarine System, an Outstanding Florida Water
- Estuarine (11.97 ac) and Palustrine (0.19 ac) Wetlands
- Continuous and Discontinuous Seagrass beds
- Mangroves at Bridge's North/East Abutment
- No Designated Critical Habitat
- Consultation Area for West Indian manatee, Florida scrub jay, piping plover, and within CFA for Wood Stork
- Manatee Protection Zones
- Sarasota Bay is Verified Impaired for Bacteria in Shellfish
- Entirely within 100-yr or 500-yr Floodplains – Zones AE & VE
- Coastal Zone Consistency Review is Required

- **Physical Issues:**

- Noise Sensitive Land Uses include Residential and Recreational
- Contamination
- Navigation



*Bayfront Park Shoreline*



*Southwestern Median Looking Northeast*



# SR 789 (Little Ringling)

## ETDM Wetlands Map

#14384 Little Ringling - Wetlands

2019/05/10



**etdm**  
Efficient Transportation Decision Making

**est**  
Environmental Screening Tool

**FDOT**





# Discussion

