

Florida's *etdm* Process

*Efficient
Transportation
Decision
Making*



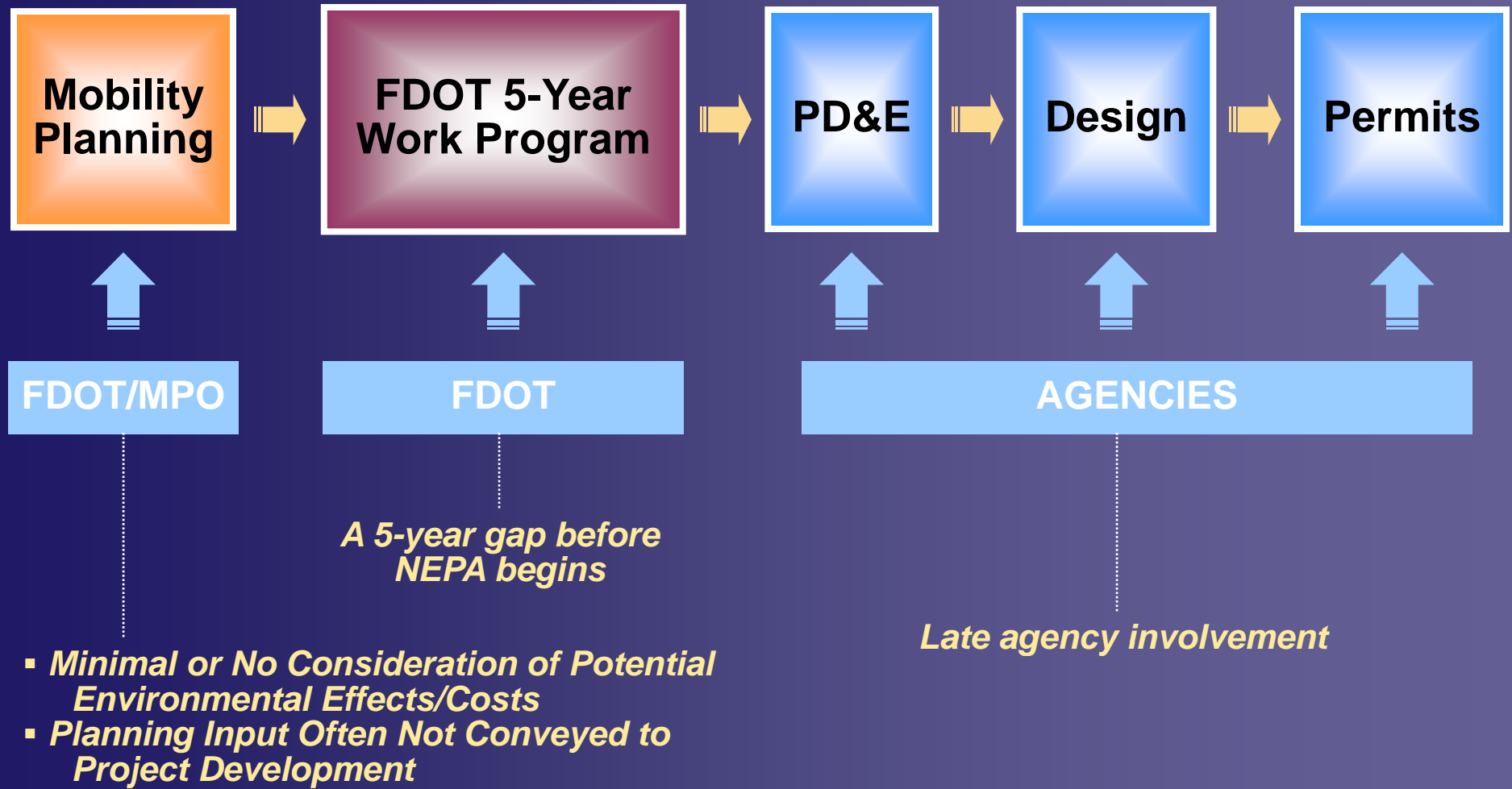
Web Training Guidelines

- Please put your phone on mute while not speaking
- Please do not put us on hold
- We are covering a lot of material in an hour and half. Please write down your question and ask it at the end. I will stay on until every question is answered.

Agenda

- Introductions
- What is ETDM?
- Why do ETDM?
 - History
 - SAFETEA-LU
 - Process Improvements
- What are the Keys to Success?
 - Process
 - People
 - Types of Projects
 - Technology
- What have we achieved?

Previous Project Delivery Process



Environmental Streamlining Objectives

(TEA 21 Section 1309 June 98-2003)

- Effective/Timely Decision Making Without Compromising Environmental Quality
- Full and Early Participation of Agencies and Public
- Earlier Awareness of Potential Environmental Issues and Consideration of Avoidance, Minimization, Mitigation Measures
- Less duplication of effort –build on each step, don't “prove the negative”
- Meaningful Dispute Resolution Mechanisms
- Integrating Review and Permitting Processes
- Early NEPA Reviews/Approvals

What is ETDM?

Efficient Transportation Decision Making Process

- A way of planning and developing major capacity transportation improvement projects
- Enables agencies and the public to provide early input to FDOT and MPOs about potential effects of proposed transportation projects
- Developed by interagency group to help Florida make transportation decisions more quickly without sacrificing the quality of the human and natural environments



Memorandum of Understanding



1. Master Agreement
2. Agency Operating Agreements
3. Funding Agreements



Memorandum of Understanding
Florida Department of Transportation
Efficient Transportation Decision Making While Protecting Florida's Environment

The State of Florida and the federal agencies listed below committed in February 2000 to support the Florida Department of Transportation and the U.S. Department of Transportation (the Federal Highway Administration and the Federal Transit Administration) in their efforts to examine how transportation decisions are made and to develop a process that results in improvements to:

- Transportation decisions
- Protection of the natural and human environment
- Efficiency and cost savings
- Early input by the agencies in transportation planning

This process fulfills the spirit of Section 1309 of the Transportation Equity Act for the 21st Century (TEA-21) passed by Congress in June 1998 and the National Memorandum of Understanding calling for "Environmental Streamlining." This Memorandum of Understanding is executed to affirm the work performed during the last year to develop an Efficient Transportation Decision Making Process, which protects state and national resources, and document the essential purpose of the process.

Whereas, the Florida Department of Transportation and U.S. Department of Transportation and the agencies listed below have worked collaboratively since February 3, 2000 to develop a more Efficient Transportation Decision Making Process,

Whereas, the Efficient Transportation Decision Making Process described in the "Florida's Efficient Transportation Decision Making Process" dated August 2001 will achieve more timely decisions through early agency involvement,

Whereas, the Efficient Transportation Decision Making Process will provide for the use of the resources of the State of Florida and the United States through consideration of all mobility plans,

Whereas, the participating agencies agree to establish a Technical Advisory Team "for communicating between natural resource managers, and the availability of manpower and budgets to establish, and implement this process within each agency, to implement the Efficient Transportation Decision Making Process,

Whereas, the participating agencies agree to use the Efficient Transportation Decision Making Process to reduce duplication and establish efficient decision making, their agencies' statutory responsibility and processes, and are able to address the natural, cultural, community, and mobility goals of the other

Whereas, the participating agencies agree to provide for the use of the resources of the State of Florida and the United States through consideration of all mobility plans,

Whereas, the participating agencies agree to establish a Technical Advisory Team "for communicating between natural resource managers, and the availability of manpower and budgets to establish, and implement this process within each agency, to implement the Efficient Transportation Decision Making Process,

Whereas, the participating agencies agree to use the Efficient Transportation Decision Making Process to reduce duplication and establish efficient decision making, their agencies' statutory responsibility and processes, and are able to address the natural, cultural, community, and mobility goals of the other

Whereas, the participating agencies agree to provide for the use of the resources of the State of Florida and the United States through consideration of all mobility plans,

Whereas, the participating agencies agree to establish a Technical Advisory Team "for communicating between natural resource managers, and the availability of manpower and budgets to establish, and implement this process within each agency, to implement the Efficient Transportation Decision Making Process,

Whereas, the participating agencies agree to use the Efficient Transportation Decision Making Process to reduce duplication and establish efficient decision making, their agencies' statutory responsibility and processes, and are able to address the natural, cultural, community, and mobility goals of the other

Whereas, the participating agencies agree to provide for the use of the resources of the State of Florida and the United States through consideration of all mobility plans,

Whereas, the participating agencies agree to establish a Technical Advisory Team "for communicating between natural resource managers, and the availability of manpower and budgets to establish, and implement this process within each agency, to implement the Efficient Transportation Decision Making Process,

Whereas, the participating agencies agree to use the Efficient Transportation Decision Making Process to reduce duplication and establish efficient decision making, their agencies' statutory responsibility and processes, and are able to address the natural, cultural, community, and mobility goals of the other

The signatories below confirm the agreement of participating agencies to support, develop and implement the Efficient Transportation Decision Making Process, as stated above. Nothing in this Memorandum of Understanding affects the statutorily prescribed duties and obligations of any party to the Memorandum of Understanding or any party's responsibility or ability to discharge fully such duties and obligations under all applicable laws and regulations. When conflicts arise, agency-wide national level Memoranda of Understanding and agreements will supersede this Memorandum of Understanding. Furthermore, the agencies below consent the people who have worked with the Florida Department of Transportation and the U.S. Department of Transportation to develop the Efficient Transportation Decision Making Process. This process will meet the State of Florida's mobility planning needs and will assist in protecting its environment.

<i>[Signature]</i> Peter F. Madden Brigadier General, U.S. Army Division Engineer	<i>[Signature]</i> James E. Cloddy Director of Field Services - South Federal Highway Administration	<i>[Signature]</i> Thomas F. Barry, Jr., P.E. Secretary Florida Department of Transportation	<i>[Signature]</i> Mayor Richard J. Kaplan Chairman Florida Metropolitan Planning Organization Advisory Council
<i>[Signature]</i> Jerry F. Smith Regional Administrator Federal Transit Administration	<i>[Signature]</i> A. Stanley Melweg Acting Regional Administrator U.S. Environmental Protection Agency	<i>[Signature]</i> David B. Smith Secretary Florida Department of Environmental Protection	<i>[Signature]</i> Douglas E. Barr Executive Director Northwest Florida Water Management District
<i>[Signature]</i> Joseph E. Powers, Ph.D. Acting Regional Administrator Southeast Regional Office National Marine Fisheries Service	<i>[Signature]</i> John Fowler Executive Director Advisory Council on Historic Preservation	<i>[Signature]</i> Steve Seibert Secretary Florida Department of Community Affairs	<i>[Signature]</i> Jerry A. Scarborough Executive Director Suwannee River Water Management District
<i>[Signature]</i> Jerry Belson Regional Director National Park Service	<i>[Signature]</i> Robert T. Jacobs Regional Forester U.S. Forest Service	<i>[Signature]</i> Charles H. Bronson Commissioner Florida Department of Agriculture and Consumer Services	<i>[Signature]</i> Kirk B. Green, III Executive Director St. John River Water Management District
<i>[Signature]</i> T. Niles Glasgow State Conservationist Natural Resources Conservation Service	<i>[Signature]</i> Sarah Hamilton Regional Director, Region 4 U.S. Fish and Wildlife Service	<i>[Signature]</i> Dr. Allan L. Egbert Executive Director Florida Fish and Wildlife Conservation Commission	<i>[Signature]</i> Henry Deane Executive Director South Florida Water Management District

Signed on December 14, 2001

etdm



Efficient Transportation Decision Making

"It is our vision to improve transportation decision making in a way that protects our natural and human environmental resources. It is our goal that we, as environmental resource and transportation agencies, establish a systematic approach that integrates land use, social, economic, environmental, and transportation considerations. This approach will include the active participation of Federal, State and Local agencies, and the public. It will lead to decisions that provide the highest quality of life and an optimal level of mobility for the public we serve."

etdm



Goals of The ETDM Process

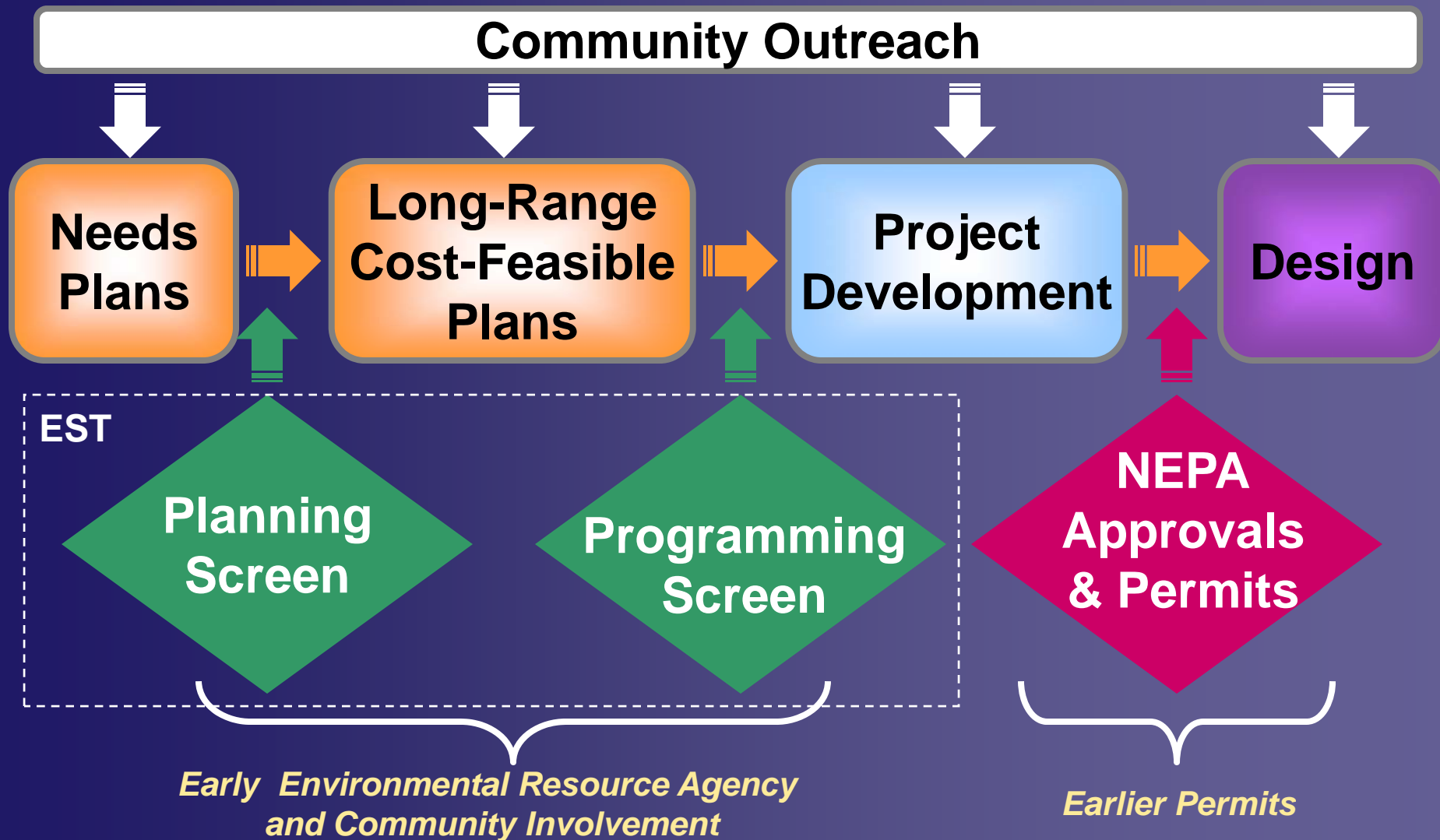
- Earlier identification and consideration of potential environmental and sociocultural effects of major transportation improvements
- More efficient planning and project development
 - Build on input at each stage
 - Don't continue to invest time and money if fatally flawed
 - Don't continue to address if a non-issue
- Where appropriate, obtain permits earlier



Projects Requiring ETDM Screening

- Major Transportation Projects
 - Roadway Projects
 - Where capacity is added to an existing road in the form of additional through lanes
 - New Roadways
 - Major Interchanges, Interchange modifications
 - Major Bridges, Bridge replacements, Bridge Projects involving additional lanes
 - Public Transportation Projects
 - Major capital improvements including Intermodal Centers, Rail, Transit Centers

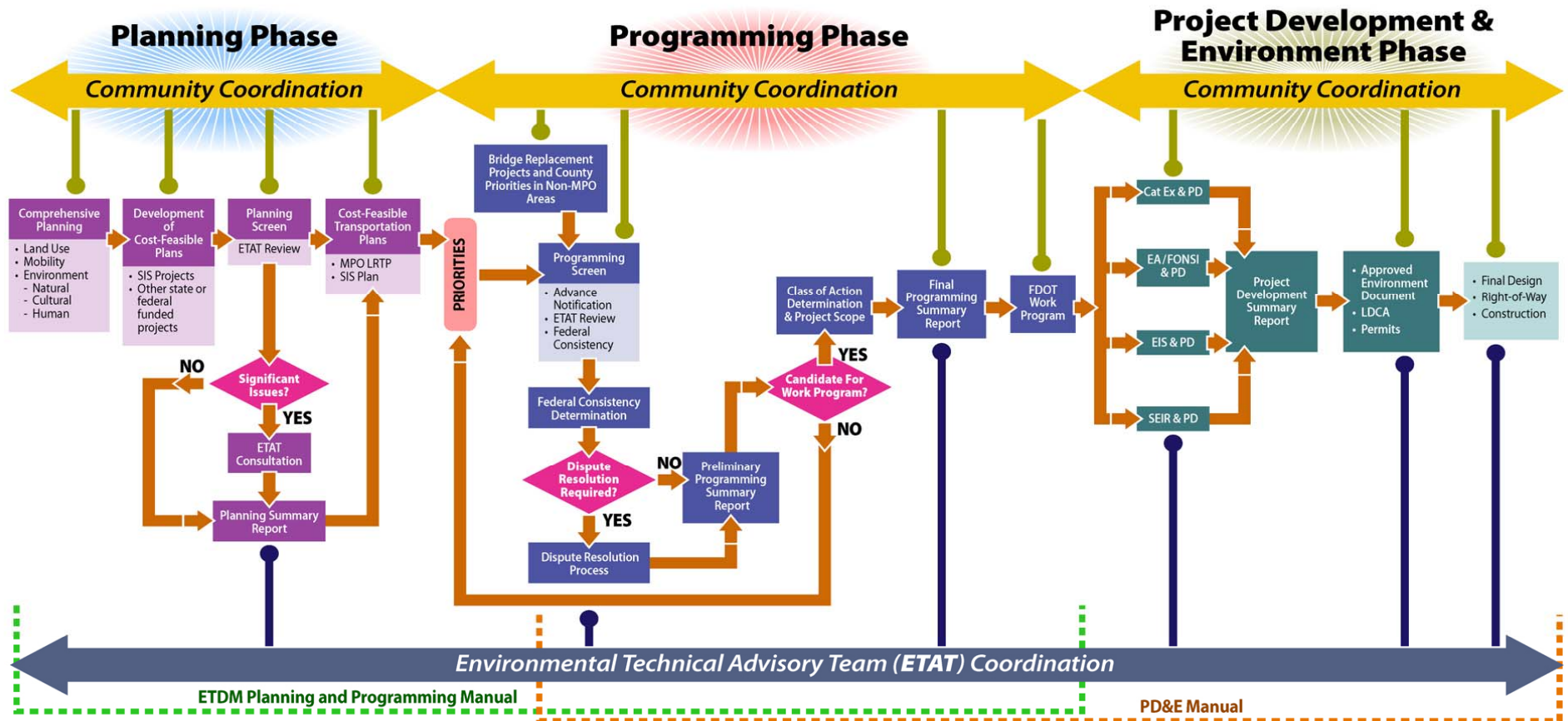
ETDM Process



etdm



ETDM Process



etdm



Why do ETDM

- One agency voice that is authorized to officially speak on behalf of the agency
- Documentation of decisions including the elimination of non-viable alternatives, agreement on the “purpose and need” of the project.
- Projects enter the FDOT Work Program and MPO TIP with better definition of issues, feasibility, and potential costs.
- MPO & FDOT LRTP processes enhanced by earlier understanding of projects’ potential environmental & sociocultural effects and their associated costs and acceptability
- Agencies and affected community have ready access to quality data and an additional mechanism to feedback

SAFETEA-LU Section 6002 Requirement – August 10, 2005

SAFETEA-LU Section 6002 Requirement	ETDM Process Satisfies Requirement
Identification of the Project Lead Agency and Participating Agencies and definition of agency roles in the process	✓
Participating Agency Invitation and review deadlines	✓
Cooperating Agencies	✓
Project Initiation	✓
Administrative and Policy Procedures	✓
Purpose and Need	✓
Range of Alternatives	✓
Comment Deadlines	✓
Coordination and Scheduling	✓
Methodologies and Level of Detail	✓
Performance Measurement	✓
Issue Resolution	✓
Assistance to State Agencies	✓
Limitation on Claims	✓



Why do ETDM? (continued)

- Project “diary” follows project through all phases
- No re-education at the permitting stage since the agency has been involved with the project since it’s initial review
- Focuses project scopes on key technical issues
- Review and permitting processes integrated
- Early NEPA reviews/approvals where appropriate
- Expected reduction in late project challenges and litigation
- Can use the EST for smaller projects that will NOT go out for a review

etdm



Grandfathering

In a letter dated December 13, 2005, FHWA approved the ETDM process under the provisions of SAFETEA-LU, citing *“The ETDM process meets the statutory requirements of Section 6002 and may be used for the development of federal aid projects.”*

Florida is the only state environmental process that has been grandfathered

etdm



Keys to Success

- Environmental Technical Advisory Team
 - Agency Reviewers
 - ETDM Coordinators
 - Community Liaison Coordinators
- Early and Continuous Agency Involvement
 - Planning Screen
 - Programming Screen
- Effective use of Technology
 - Environmental Screening Tool



Agencies Participating in the ETDM Process

More than 30 state, federal, and local agencies and tribal governments

Federal Highway Administration (FHWA)

Federal Transit Agency (FTA)

US Army Corp of Engineers (USACE)

US Coast Guard (USCG)

**US Environmental Protection Agency
(USEPA)**

**USDA Natural Resources Conservation
Service**

US Fish & Wildlife Service (USFWS)

US Forest Service (USFS)

National Marine Fisheries Service (NMFS)

National Park Service (NPS)

Seminole Tribe

Miccosukee Tribe

Florida County Governments

Florida's Regional Planning Councils (RPCs)

**26 Metropolitan Planning Organizations
(MPOs)**

**Florida Department of Environmental
Protection (FDEP)**

**Florida Department of Community Affairs
(DCA)**

**Florida Department of Transportation
(FDOT)**

**FL Department of Agriculture and
Consumer Services (FDACS)**

**Florida Fish and Wildlife Conservation
Commission (FFWCC)**

**Northwest Florida Water Management
District (NFWFMD)**

**South Florida Water Management District
(SFWMD)**

**Southwest Florida Water Management
District (SWFWMD)**

**St. Johns River Water Management District
(SJRWMD)**

**Suwannee River Water Management District
(SRWMD)**



Key Players and Roles

- Environmental Technical Advisory Team (ETAT)
 - Each FDOT District has an ETAT
 - Comprised of representatives from 23 resource agencies
 - ETAT member speaks for agency –responsible for interaction with FDOT
- Role Shifts from planning phase through permit approval
 - Planning Screen: Recommendations
 - Programming Screen: NEPA Scoping
 - Program Development: Coordination
 - Approval/Permits: Coordination

Key Players and Roles

- ETAT Representatives
 - Well versed in the statutory authority
 - Knowledgeable of the agency actions required at each phase
 - Able to perform and understand comprehensive environmental impact analyses
 - Respected within the agency
 - Access to key decision makers
 - Create solutions and function as a problem solver
 - Effective in dispute resolution
 - Single point of contact

Changes To FDOT Internal Processes

- Integration of Planning and Environmental Units
- Development of a “team” approach within many districts
 - ETDM Coordinators
 - EMO Administrators
 - Project Development Engineers
 - Permit Coordinators
- Involves more interaction between Design & Project Development staff in terms of project scoping, project commitments, and ensuring commitments carried through

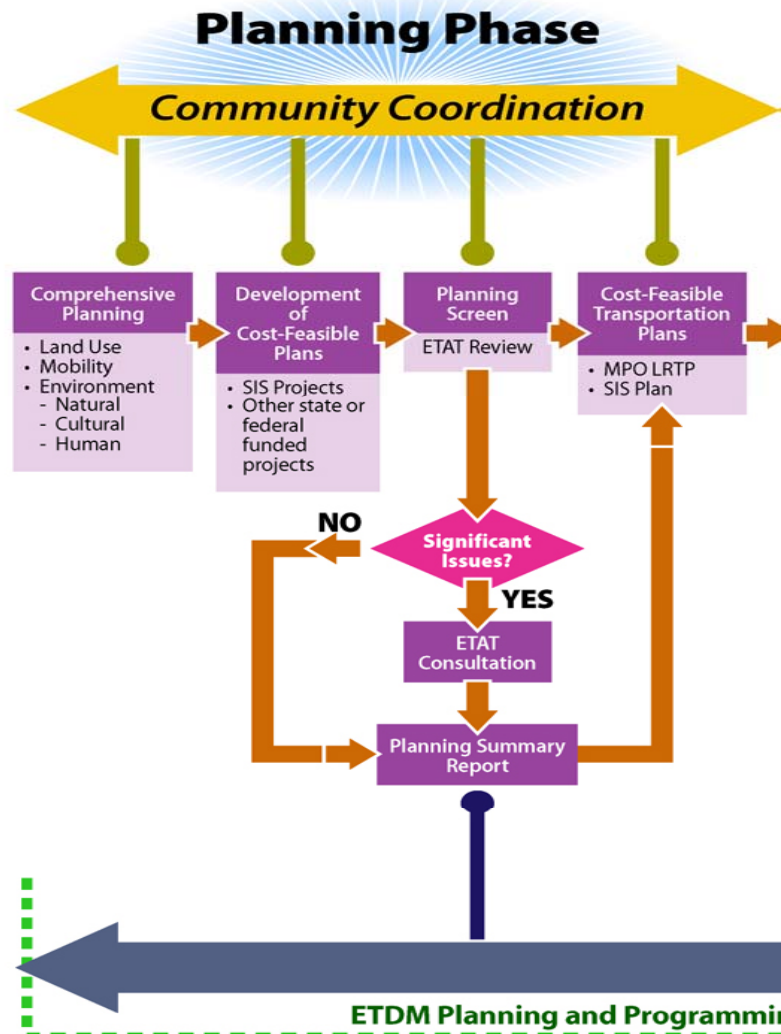
Key Players and Roles

- ETDM Coordinators
 - Coordinate activities of the process:
 - Initiate project screens
 - Notify ETAT of review readiness
 - Monitor timeliness
 - Prepare summary reports
 - Coordinate dispute resolution

Key Players and Roles

- Community Liaison Coordinators (CLCs)
 - Prepare sociocultural effects inventory
 - Review GIS analysis results
 - Solicit and respond to public comment
 - Assist with summary reports

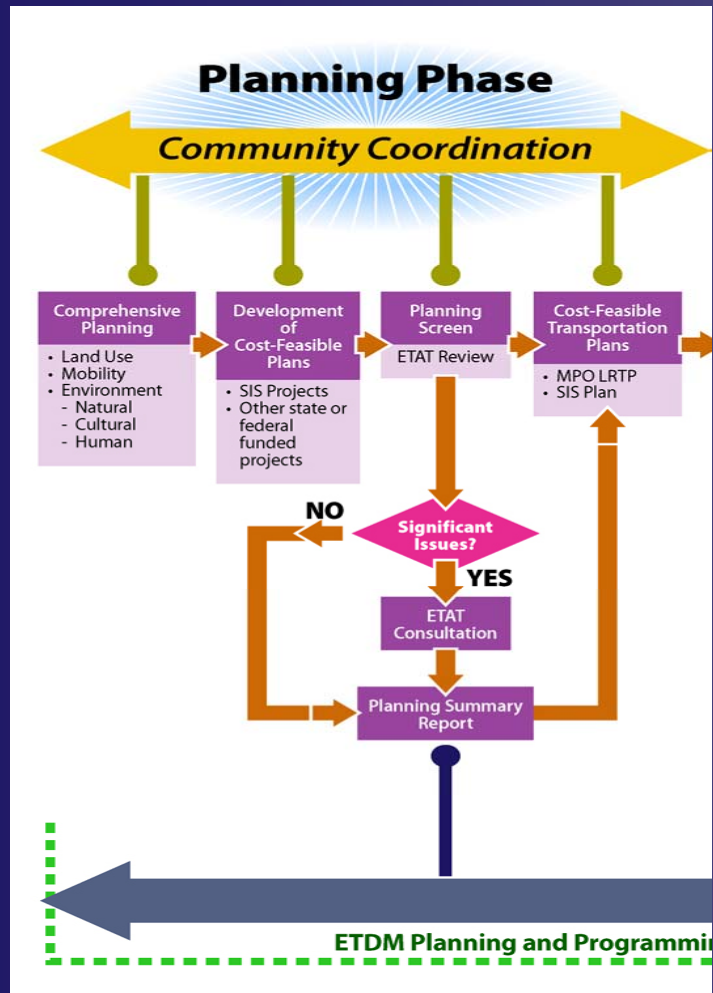
Planning Phase



■ ETAT

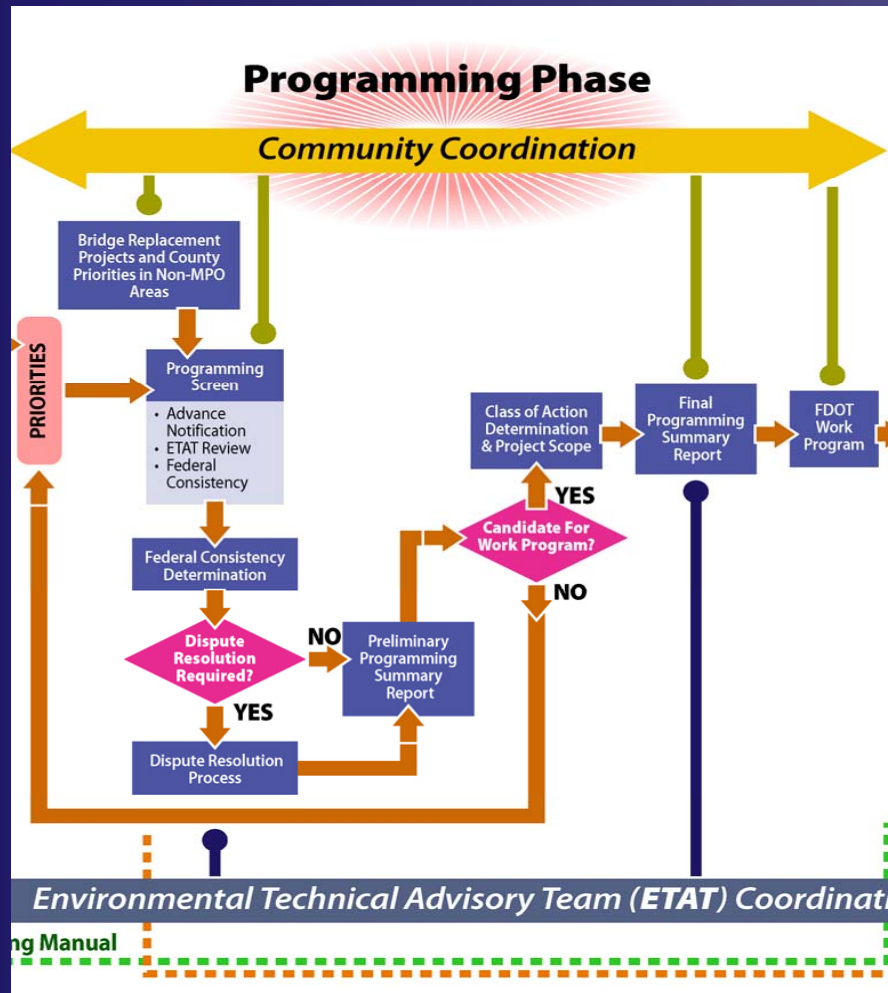
- Review purpose and need
- Review direct impacts
- Recommend avoidance/ minimization
- Suggest mitigation strategies
- Provide SACIA commentary
- Assess degree of effect
- Coordinate to reduce conflicts

Planning Phase



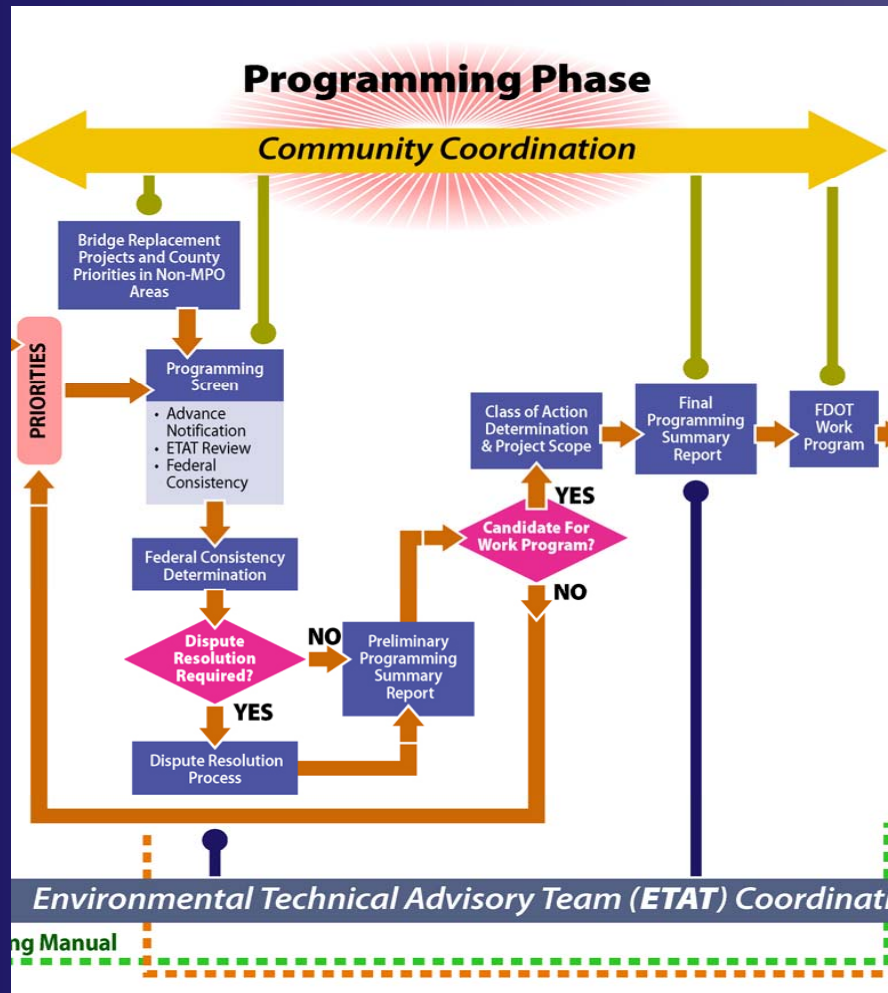
- **Community Outreach**
 - Inventory community characteristics
 - Conduct public outreach
 - Conduct public meetings on LRTP
 - Document community concerns
 - Identify sociocultural effects
 - Make Planning Summary Report available

Programming Phase



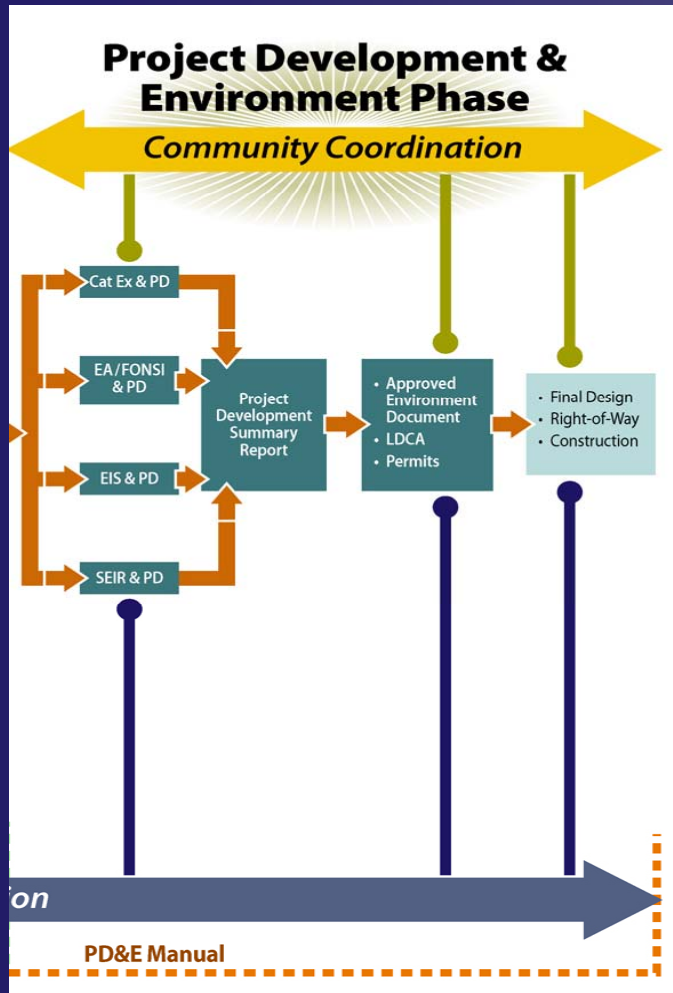
- ETAT
 - Update direct impact assessment
 - Provide AN comments
 - Document degree of effect
 - Provide scope for technical studies
 - Participate in dispute resolution, if necessary
 - FHWA/FDOT determines class of action
 - Federal Consistency Review and Determination

Programming Phase



- Community Outreach
 - Continued public outreach
 - Conduct work program public hearings
 - Make Programming Summary Report available

Project Development

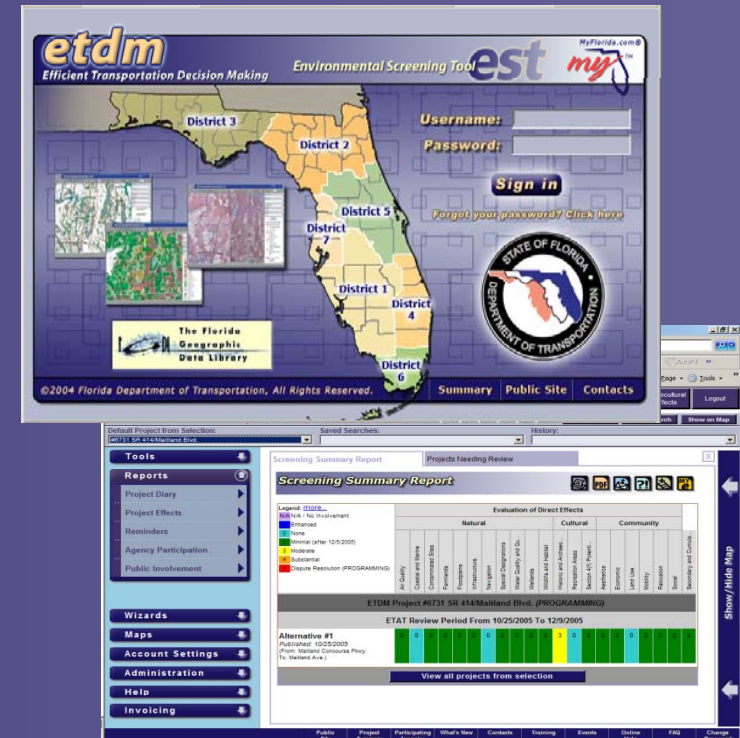


- FDOT's PM develops scope of services
 - Alternatives already screened
 - Focused technical studies
 - Unnecessary to prove the negative
- Permits and conditions identified
- Agencies support hearings
- ETAT Coordination on specific issues
- Agencies review environmental documents

Environmental Screening Tool

Supports the ETDM Process

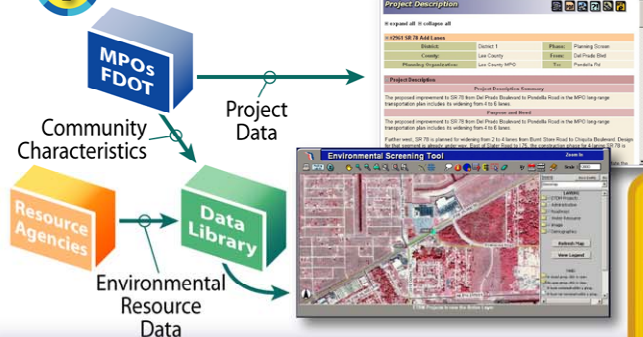
- Integrate Data From Multiple Sources
- Analyze Environmental Effects
- Communicate Information
- Store And Report Results
- Maintain Project Records



etdm

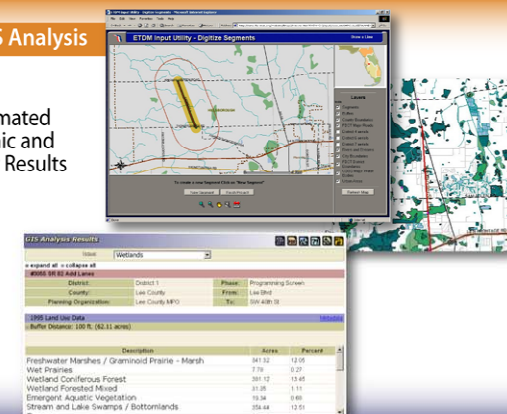


Step 1 Data Entry



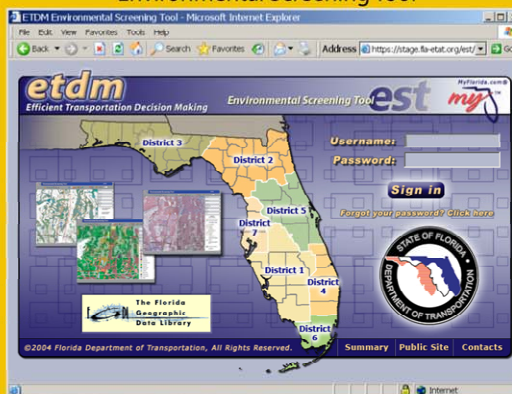
Step 2 GIS Analysis

Automated Graphic and Tabular Results

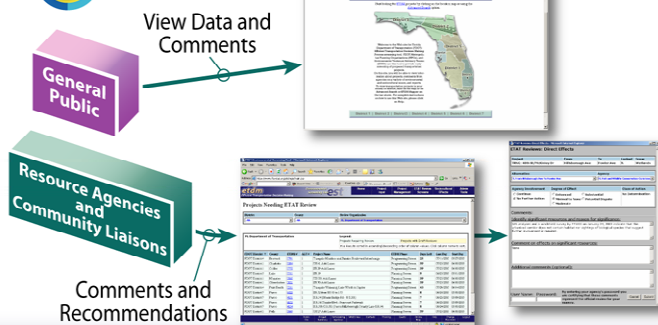


The Technology System

Entry portal for Internet-accessible
Environmental Screening Tool

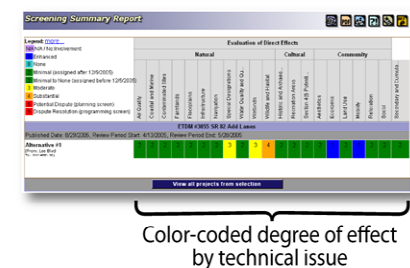


Step 3 Project Review

[View Data and Comments](#)

Step 4 Summary Reports

- Summary of Effects
- Commitments
- Responses

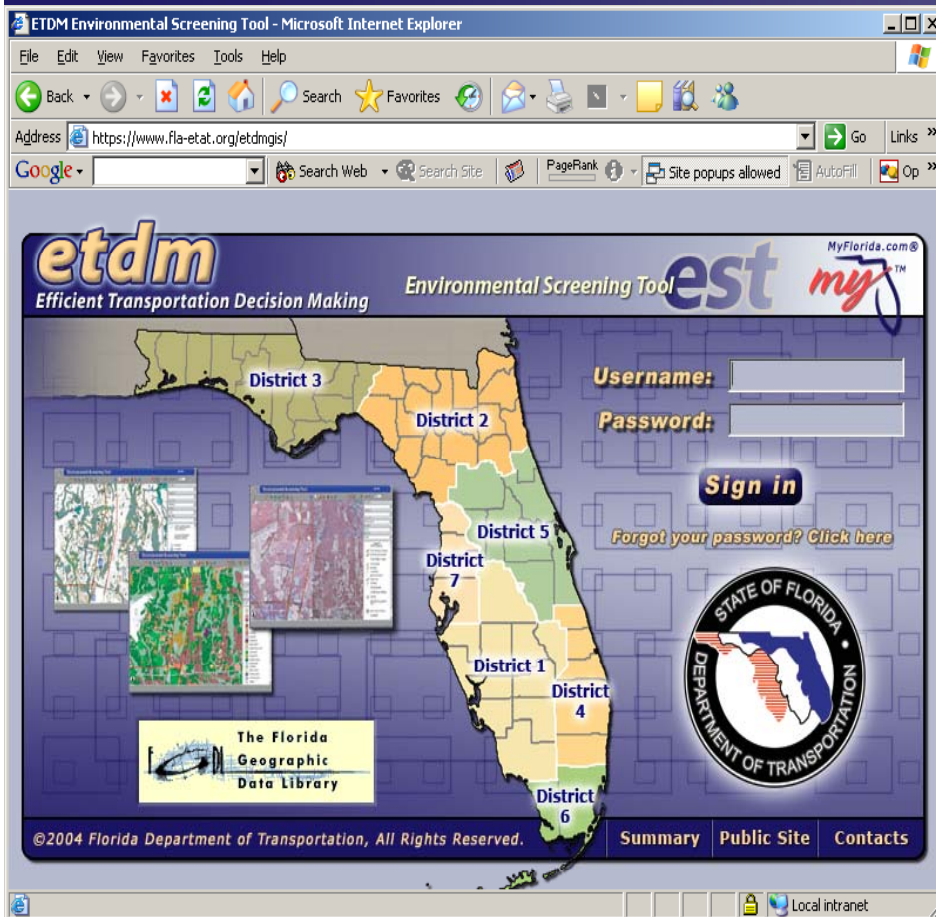


Color-coded degree of effect
by technical issue

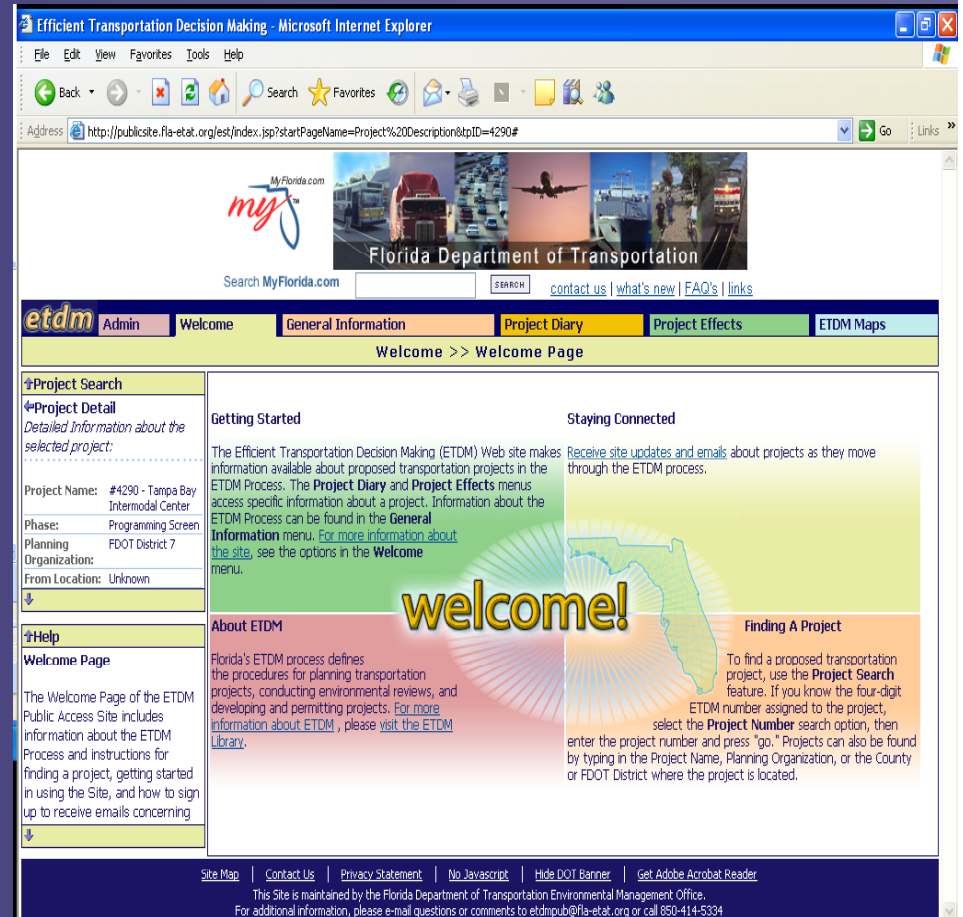


Environmental Screening Tool

Secure Site



Public Access Site



Environmental Screening Tool

etdm
Efficient Transportation Decision Making

Environmental Screening Tool**est**

MyFlorida.com®
my™

Username:
Password:
Sign in
[Forgot your password? Click here](#)

The Florida Geographic Data Library

**STATE OF FLORIDA
DEPARTMENT OF TRANSPORTATION**

©2004 Florida Department of Transportation, All Rights Reserved.

[Summary](#) | [Public Site](#) | [Contacts](#)

ETDM Environmental Screening Tool - Microsoft Internet Explorer

File Edit View Favorites Tools Help

Back Forward Stop Home Search Favorites RSS Print Mail News Groups People

Address <https://stage.fl-a-etat.org/est/index.jsp> Go Links

etdm *Efficient Transportation Decision Making* **est** *Environmental Screening Tool*

My ETDM Bookmarks Project Input Project Management ETAT Review Screens Sociocultural Effects Logout

Current Selection: **No Projects Selected** New Search Modify Search Show on Map

Default Project from Selection: Saved Searches: History:

Tools

- Maintain Project Diary
- Record Results of Project Review
- Document Public Involvement Activities
- Coordinate ETAT Activities

Reports

Wizards

Maps

Account Settings

Administration

Help

Welcome!

We've given the EST a face-lift & we hope you like it!

welcome

Improved Project Search Integrated Functionality

Left Menu contains all of the functions:

- Tools – Input forms
- Reports – Standard reports
- Wizards – Step-by-step processes
- Maps – Set interactive viewer or map editors
- Account Settings – User preferences
- Help – More information

More... More...

User Profiles

- Open your favorite report or form when you log on
- Pick a default map and visible data layers to display when you first open the map viewer
- All this and more... in [Account Settings](#)

Artistic Flair

- With help from a graphic artist, the EST pages now have a publication-quality style! Wow!

STATE OF FLORIDA
DEPARTMENT OF TRANSPORTATION

Public Site Project Summary Participating Agencies What's New Contacts Training Events Online Help FAQ Change Password

Local intranet

ETDM Environmental Screening Tool - Microsoft Internet Explorer

File Edit View Favorites Tools Help

Back Forward Stop Home Search Favorites Refresh Print Mail News RSS Feeds

Address <https://stage.fl-a-etat.org/est/index.jsp> Go Links

etdm Environmental Screening Tool

My ETDM Bookmarks Project input Project management ETAT Review Screens Sociocultural Effects Logout

Current Selection: **No Projects Selected** New Search Modify Search Show on Map

Default Project from Selection: Saved Searches: History:

Tools

- Maintain Project Diary
- Record Results of Project Review
- Document Public Involvement Activities
- Coordinate ETAT Activities

Reports **Wizards** **Maps** **Account Settings** **Administration** **Help**

Welcome!

Project Navigation Bar – Always available to search for projects

Improved Project Search

- New project look-up tool -- try it out by clicking on the **New Search** button
- Saved Searches** gives quick access to frequently used project and groups of projects
- Switch between recent project selections with the **History** menu

Integrated Functionality

- No need to hunt for a report or form among 5 different modules -- they're all found in the **Left Navigation Menu**
- Lost pop-up windows are a thing of the past! Every thing opens within the EST frames. Right-click on a menu option to open a page in a new **Tab** window
- Miss those old modules? We know change is hard, so the modules will be available for a few more months in the **Top Navigation Bar**. Use the **Cross Reference Table** to find functions in the new menu
- Can't remember what to do next? Try out a **Wizard** to step you through a process

User Profiles

- Open your favorite report or form when you log on
- Pick a default map and visible data layers to display when you first open the map viewer
- All this and more... in **Account Settings**

Artistic Flair

- With help from a graphic artist, the EST pages now have a publication-quality style! **Wow!**

STATE OF FLORIDA
DEPARTMENT OF TRANSPORTATION

Public Site Project Summary Participating Agencies What's New Contacts Training Events Online Help FAQ Change Password

Local intranet

ETDM Environmental Screening Tool - Microsoft Internet Explorer

File Edit View Favorites Tools Help

Address <https://www.fla-etat.org/est/>

Google Search PageRank Popups okay AutoFill Options

etdm Environmental Screening Tool **est**

My ETDM Bookmarks Project Input Project Management ETAT Review Screens Sociocultural Effects Logout

Current #7701-1-3 Default #7701-1-3

4370,3275,3274) New Search Modify Search Show on Map

History:

The map viewer will remember the last issue map and map extent shown during the current session.

g Tool Zoom In

Scale 1:16992

ISSUE Basemap Save Config Go

Legend

- Selected Features
- Draft ETDM Termini
 - Begin Point
 - End Point
- Draft ETDM Projects
 - Editing
 - ETDM QA/QC
 - FIHS Consistency Review
 - GIS Analysis Complete
 - Ready for GIS Analysis
- Draft Project Segment Numbers

0 0.4mi

All ETDM Projects is now the Active Layer

Public Site Project Summary Participating Agencies What's New Contacts Training Events Online Help FAQ Change Password

Performing Reviews

Programming Screen Initiates

- Programming Screen notification constitutes Advance Notification (AN) and initiates Federal Consistency Review and consistency with Local Government Comprehensive Plan
- ETAT and Federal Consistency Reviewers use the EST to submit comments
 - Identify Technical Studies
 - Permits and Conditions
 - Basis for project scope
 - Department makes commitments
- State Clearinghouse reviews comments and completes the consistency determination for Florida's Coastal Management Program

Step 1. Send Notifications

- ETDM Coordinator sends electronic notifications to:
 - State Clearinghouse Coordinator
 - ETAT Members
 - State Federal Consistency Reviewers
 - Other Interested Parties
- Includes project identifier, instructions, and links to AN and website
- Initiates 45-day comment period

May be the same for an agency

Issues Agencies Comment On

- Aesthetics
- Air Quality
- Coastal and Marine
- Contaminated Sites
- Economic
- Farmlands
- Floodplains
- Historic and Archaeological Sites
- Infrastructure
- Land Use
- Mobility
- Navigation
- Recreation Areas
- Relocation
- Secondary and Cumulative Effects
- Section 4(f) Potential
- Social/Community Concerns
- Special Designations
- Water Quality and Quantity
- Wetlands
- Wildlife and Habitat

Through Agency Operating Agreements, agencies are tied to specific issues above. Meaning, comments are expected from the agencies on the issues they manage, regulate, or consult on.

Sample Notification

To: ETAT Representatives, Federal Consistency Reviewers, AN Recipients
From: ETDM Coordinator
Date: 05/19/2008 05:16PM
Subject: Notice: ETDM Programming Screen has begun

The ETDM Programming Screen has begun for the following project. This notice also constitutes the Advance Notification in accordance with Presidential Executive Order 12372. Please review instructions below and then proceed to the Environmental Screening Tool to submit your comments at:

www.fla-etat.org

ETDM # : 10033
PROJECT NAME : Test: Sarah Non-Viable 3/13/2008
ALTERNATIVE : 1,3
SCREENING : Programming Screen
COUNTY : Franklin
DISTRICT : 3
Project Sponsor : FDOT District 3

<Click to view the Advance Notification Package> Link: http://publicsite.fla-etat.org/est/AN_Package.jsp?pkg=231

=====

The review period starts today 19-May-08, and will end in 45 days, on 03-Jul-08.

=====

The following Water Management District(s) should review this project:

NORTHWEST FLORIDA WATER MANAGEMENT DISTRICT

=====

The following agencies have been identified as potentially exempted from this project screening event. These agencies should review the Advance Notification Package and participate in the review screening at their own discretion.

Federal Highway Administration, Federal Rail Administration, Federal Transit Administration, National Park Service

=====

Your review of this project should include:

- * Review of Project Description and Purpose and Need Statement
- * Commentary on potential direct and secondary effects. Consider:
 - Standardized analyses provided in the EST
 - Studies and other data about the area
 - Your professional knowledge about potential effects in the area
- * Assignment of degree of effect
- * Scoping recommendations for technical studies in future project development phase to address:
 - Moderate or substantial effects
 - Areas where data is insufficient to determine potential effect

Your commentary and input will be used to determine the Class of Action for the NEPA study.

For those involved in Sociocultural Effects Evaluations, please review the 'Sociocultural Effects Evaluation- Guidelines for the ETDM Process' document at <http://www.dot.state.fl.us/emo/pubs/sce/sce.htm>.

If you have any technical questions, need assistance, or require additional training, the following three options are available to you:

- 1) Contact the ETDM Help Desk at 850-414-5334 or help@fla-etat.org
- 2) Contact [Insert Contact Name] at [Insert Contact Phone] or [Insert Contact E-mail Address]
- 3) Contact Sarah Van Wart at null or marcelo_bosio@urscorp.com

NOTICE TO MPO ETDM Coordinators and CLCs: Some projects may not fall within your geographic jurisdiction; however, the Department would not want to prevent you from commenting on a project if you believe that it may impact your organization. Therefore, you are being notified of any project entering a review cycle within your FDOT District.

Thank you,

ETDM Coordinator



Step 2. Review Project

- Upon receipt of notification:
 - Review project Information provided in AN Package and on EST website
 - Coordinate activities and project commentary within agency
 - Submit comments or request extension within 45 days
 - ETAT and State Federal Consistency Reviewers submit comments on EST
 - Other interested parties submit comments via email, written correspondence, or public workshops

ETDM Environmental Screening Tool - Microsoft Internet Explorer

File Edit View

Back Forward

Address <https://www.nra-ecat.org/est/>

Google Search PageRank Popups okay AutoFill Options

Projects Needing Review Method

etdm Efficient Transportation Decision Making

Environmental Screening Tool est

My ETDM Bookmarks Project Input Project Management ETAT Review Screens Sociocultural Effects Logout

Current Selection: **No Projects Selected** New Search Modify Search Show on Map

Default Project from Selection: Saved Searches: History:

Tools

- Maintain Project Diary
- Record Results of Project Review
- Document Public Involvement Activities
- Coordinate ETAT Activities

Reports

Wizards

Maps

Account Settings

Administration

Help

My ETDM Dashboard

Projects Needing Review

Results sorted in ascending/descending order of column values. Click column name to sort.

<u>EDOT District</u>	<u>County</u>	<u>ETDM#</u>	<u>ALT#</u>	<u>Project Name</u>	<u>ETDM Phase</u>	<u>Days Left</u>	<u>Last Day</u>	<u>Start day</u>
District 4	Palm Beach County	7341	1	US1 Low Level Bridges Replacement	Programming Screen	10	2/27/2006	1/13/2006
District 4	Broward County Palm Beach County	7519	1	South Florida East Coast	Programming Screen	22	3/11/2006	1/25/2006
District 4	Broward County Palm Beach County	7519	2					5/2006
District 4	Broward County Palm Beach County	7519	3					5/2006
District 6	Miami-Dade County	7579			Screen			6/2006
District 6	Miami-Dade	7579	2	Miami Streetcar	Programming	23	3/12/2006	1/26/2006

Selecting the ETDM Number – Launches the project information and review.

All columns are sort able – so either sort on district or perhaps the Number of Days left in the review

Show/Hide Map

Public Site Project Summary Participating Agencies What's New Contacts Training Events Online Help FAQ Change Password

ETDM Environmental Screening Tool - Microsoft Internet Explorer

File Edit View Favorites Tools Help

Address <https://www.fla-etat.org/est/>

Google Search PageRank Popups okay AutoFill Options

etdm Efficient Transportation Decision Making

Environmental Screening Tool est

My ETDM Bookmarks Project Input Project Management ETAT Review Screens Sociocultural Effects Logout

Current Selection: **Manual Selection (7341)** New Search Modify Search Show on Map

Default Project from Selection: #7341 US1 Low Level Bridges Replacement Saved Searches: History:

Tools

- Maintain Project Diary
- Record Results of Project Review
- Document Public Involvement Activities
- Coordinate ETAT Activities

Reports

Wizards

Maps

Account Settings

Administration

Help

My ETDM Dashboard **Project Description** Review Purpose & N... Describe Direct Effic... GIS Analysis Results

Project Description

expand all collapse all

#7341 US1 Low Level Bridges Replacement

District:	District 4	Phase:	Programming Screen
County:	Palm Beach County	From:	North of SR-706 @ Coastal Way
Planning Organization:	FDOT District 4	To:	South of CR-A1A, Ocean Blvd

Project Description

Project Description Summary

This project evaluates the need to reconstruct the existing US 1 low level bridges located in the northeast corner of Palm Beach County. The four bridges are an integral part of US 1, each spanning a portion of an oxbow in Lake Worth Creek. The bridges provide connectivity between Burt Reynolds Park, located on an island created by the oxbow and the surrounding mainland areas to the north and south.

In the area of the low level bridges, US 1 is the primary north-south roadway. About 1/4 mile north of the Burt Reynolds Bridge, US 1 crosses the Loxahatchee River and is the only roadway east of I-95 linking Jupiter with Stuart, Port St. Lucie and greater Martin County to the north. The only other roadway crossing the Loxahatchee River east of I-95 is Old Dixie Highway, which ends just north of the Palm Beach-Martin County Line at the Jupiter

Public Site Project Summary Participating Agencies What's New Contacts Training Events Online Help FAQ Change Password

Show/Hide Map

ETDM Environmental Screening Tool - Microsoft Internet Explorer

File Edit View Favorites Tools Help

Back Forward Stop Reload Home Search Favorites RSS Print Mail AutoFill Options

Address <https://www.fla-etat.org/est/> Go Links

Google Search PageRank Popups okay AutoFill Options

etdm *Efficient Transportation Decision Making*

Environmental Screening Tool **est**

My ETDM Bookmarks Project Input Project Management ETAT Review Screens Sociocultural Effects Logout

Current Selection: **Manual Selection (7341)** New Search Modify Search Show on Map

Default Project from Selection: #7341 US1 Low Level Bridges Replacement Saved Searches: History:

Environmental Screening Tool

Zoom In

Mailing Labels Navigation Tools Scale 1:17816

Map showing project area with labels: CENTER STREET, A1A, 3530-1, 3531-1, INDIANTOWN RD, FEDERAL HWY, 7341-1, OCEAN DRIVE FOR A1A, 0.419mi

ISSUE: Wildlife and Habitat

Save Config Go

- FNAI Managed Areas
- FWCC Management Areas
- State Parks
- National Parks & Seashores
- Public Pinelands
- FMRI Aquatic Preserves
- Seagrass
- CONTINUOUS
- DISCONTINUOUS
- HYDRIC Soils

Legend

Show/Hide Map

Public Site Project Summary Participating Agencies What's New Contacts Training Events Online Help FAQ Change Password

ETDM Environmental Screening Tool - Microsoft Internet Explorer

File Edit View Favorites Tools Help

Address <https://www.fla-etat.org/est/>

Google Search PageRank Popups okay AutoFill Options

etdm Efficient Transportation Decision Making

Environmental Screening Tool est

My ETDM Bookmarks Project Input Project Management ETAT Review Screens Sociocultural Effects Logout

Current Selection: **Manual Selection (7341)** New Search Modify Search Show on Map

Default Project from Selection: #7341 US1 Low Level Bridges Replacement Saved Searches: History:

Tools

- Maintain Project Diary
- Record Results of Project Review
- Document Public Involvement Activities
- Coordinate ETAT Activities

Reports

Wizards

Maps

Account Settings

Administration

Help

My ETDM Dashboard Project Description Review Purpose & N... Describe Direct Effic... **GIS Analysis Res...**

<< Step 5 Summary of Selected Analyses and Buffer Distances **Print PDF**

☐ **Wildlife and Habitat**

2003 FFWCC Habitat and Landcover GRID: 2003 Habitat and Landcover Grid from the Florida Fish and Wildlife Conservation Commission summarized by type. Data is currently not displayed in maps.

☐ **Buffer Distance: 500 Ft. (94.55 Acres)**

Description	Acres	Percent
BARE SOIL/CLEARCUT	0.89	0.94
DRY PRAIRIES	0.67	0.70
EXOTIC PLANTS	1.55	1.64
FRESHWATER MARSH AND WET PRAIRIE	0.44	0.47
HARDWOOD HAMMOCKS AND FORESTS	2.22	2.35
HARDWOOD SWAMP	3.33	3.52
HIGH IMPACT URBAN	52.16	55.16
LOW IMPACT URBAN	9.10	9.62

Public Site Project Summary Participating Agencies What's New Contacts Training Events Online Help FAQ Change Password

Show/Hide Map

ETDM Environmental Screening Tool - Microsoft Internet Explorer

File Edit View Favorites Tools Help

Back

Search

Favorites

Address

https://www.fl-a-etat.org/est/

Go

Links >>

Google

Search

PageRank

Popups okay

AutoFill

Options

etdm

Efficient Transportation Decision Making

Environmental Screening Tool

est

My ETDM

Bookmarks

Project Input

Project Management

ETAT Review Screens

Sociocultural Effects

Logout

Current Selection: Manual Selection (7341)

New Search

Modify Search

Show on Map

Default Project from Selection:

#7341 US1 Low Level Bridges Replacement

Saved Searches:

History:

Tools

Reports

Project Diary

Project Effects

Reminders

Agency Participation

Wizards

Maps

Account Settings

Administration

Help

My ETDM Das...

Project Descr...

Review Purpo...

Describe Dire...

GIS Analysis ...

Agency Co...

Agency Comments - Project Effects

expand all collapse all

#7341 US1 Low Level Bridges Replacement

District:	District 4	Phase:	Programming Screen
County:	Palm Beach County	From:	North of SR-706 @ Coastal Way
Planning Organization:	FDOT District 4	To:	South of CR-A1A,Ocean Blvd

Agency Reviews for Alternative 1

Natural

Air Quality

Coastal and Marine

National Marine Fisheries Service (02/10/2006)

Coastal and Marine Effect: Minimal

Identified Resources and Level of Importance:

Based on the project location and information provided in the ETDM website; GIS effects analysis on wetlands; and site visit on January 19, 2006, NMFS has determined that estuarine wetlands are present in the project area. Seagrass and mangrove wetlands are present upstream and

Public Site

Project Summary

Participating Agencies

What's New

Contacts

Training

Events

Online Help

FAQ

Change Password

Show/Hide Map

Step 2. Review Project (continued)

- ETAT - specific responsibilities
 - Comment on purpose and need
 - Describe project effects to resources under agency authority
 - Recommend avoidance/ minimization
 - Suggest mitigation strategies
 - Assess degree of effect
 - Coordinate to reduce conflicts

ETDM Environmental Screening Tool - Microsoft Internet Explorer

File Edit View Favorites Tools Help

Back Forward Stop Reload Home Search Favorites RSS Print Mail AutoFill Options

Address <https://www.fl-a-etat.org/est/> Go Links

Google Search PageRank Popups okay AutoFill Options

etdm Efficient Transportation Decision Making

Environmental Screening Tool est

My ETDM Bookmarks Project Input Project Management ETAT Review Screens Sociocultural Effects Logout

Current Selection: **Manual Selection (7341)** New Search Modify Search Show on Map

Default Project from Selection: #7341 US1 Low Level Bridges Replacement Saved Searches: History:

Tools

- Maintain Project Diary
- Record Results of Project Review
- Document Public Involvement Activities
- Coordinate ETAT Activities

Reports

Wizards

Maps

Account Settings

Administration

Help

My ETDM Dashboard Project Description **Review Purpose ...** Describe Direct Effect... GIS Analysis Results

reconstruction of the existing bridges.

☐ **Enter Purpose & Need Review**

Indicate whether the purpose and need statement is:

☐ Understood ☐ Not Understood

Comments:

☐ **Signature**

User Identity:

Peter McGilvray @ FL Department of Transportation

Password:

By entering your agency's password you are certifying that these comments represent the official review from your agency of the Purpose & Need Statement.

Submit Form

Show/Hide Map

Public Site Project Summary Participating Agencies What's New Contacts Training Events Online Help FAQ Change Password

Step 2. Review Project (continued)

- Federal Consistency Reviewer - specific responsibilities
 - Review projects for consistency with the Florida Coastal Management Program, as pertains to agency authority
 - For inconsistency findings:
 - Cite relevant statutes
 - Identify actions to resolve the conflict
 - Immediately notify the State Clearinghouse of identified problems

ETDM Environmental Screening Tool - Windows Internet Explorer provided by Florida Dept. of Transportation

https://stage fla-etat.org/est/index.jsp?Certificate ErrorLive Search

FileEditViewFavoritesToolsHelp

ETDM Environmental Screening Tool

etdm

Efficient Transportation Decision Making

Environmental Screening Tool

est

Session ActiveOnline HelpMy ETDMBookmarksLogout

Current Selection: Manual Selection (3247)

Default Project from Selection: #3247 Pembroke Rd

Saved Searches:

History:

Tools

Record Results of Project Review

Coordinate ETAT Activities

Projects Needing Fed...

Project Description

Submit Federal C...

Project Description

GIS Analysis Results

Submit Federal Consistency Finding

Reminder

This finding will be considered by the State Clearinghouse in making the Federal Consistency Determination for this project. Only the final determination will be included in the Programming Screen Summary Report.

#3247 Pembroke Rd

District	District 4	Phase	Programming Screen
County	Broward County	From	Douglas Rd
Planning Organization	Broward MPO	To	University Dr
Plan ID	99	Financial Management No.	
Federal Involvement	Federal Action Federal Funding		
Contact Name / Phone	John Doe (954) 357-6662	Contact Email	Jdoe@broward.org

Federal Consistency Finding:

State reviewers should note that if a finding of inconsistency is made, the finding must cite the section of the relevant statute under that agency's authority with which the project is inconsistent, and must identify actions that can be taken to resolve the conflict. Prior to actually issuing a finding of inconsistency, the reviewing agency should **immediately** notify the Clearinghouse of identified problems (phone 850-245-2161 or Suncom 205-2161).

Finding	Definition
<input type="radio"/> Consistent	Based on the information contained in the Advance Notification and comments submitted by the reviewing agencies, the state has no objections to allocation of federal funds for the subject project and, therefore, the funding award is consistent with the Florida Coastal Management Program. State agency comments should be considered in developing the preliminary project design. For projects subject to coastal management consistency review that advance to the work program, the final review of the project's consistency with the Florida Coastal Management Program will be conducted during the environmental permitting review.
<input type="radio"/> Consistent, With Comments	Although the final alignment and design details have not yet been determined, at this time the State of Florida has no objections to the project concept described in the Advance Notification and no objections to the allocation of federal funds for the necessary planning, preliminary design and environmental evaluation activities. Therefore, the funding award is consistent with the Florida Coastal Management Program. Specific comments and recommendations concerning the project concept have been submitted to the project sponsor through the Efficient Transportation Decision Making (ETDM) process. Specific objections to the project, if any, that have been identified during ETDM will be resolved through the ETDM conflict resolution (Part IV, AOA) process prior to the project advancing in the FDOT Five-Year Work Program for any purpose other than technical studies and preliminary design to resolve the objections. For projects subject to coastal management consistency review that advance to final design, right-of-way acquisition or construction, the final review of the project's consistency with the Florida Coastal Management Program will be conducted during the environmental permitting review.
<input type="radio"/> Inconsistent	The project has been determined to be inconsistent with the Florida Coastal Management Program. Unless the objections are addressed and the project determined to be consistent, the project shall not proceed further in the programming and PD&F phases.

Reports

Wizards

Maps

Account Settings

Help

Public Site | Project Summary | Participating Agencies | What's New | Contacts | Training | Events | Download Adobe Acrobat Reader (opens in a new window) | FAQ | Change Password

This Site is maintained by the Florida Department of Transportation Environmental Management Office. For additional information, please e-mail questions or comments to help@fla-etat.org or call 850-414-5334

DoneLocal intranet100%

Step 2. Review Project (continued)

- For agencies with different ETAT and Federal Consistency Review personnel
 - Ensure Federal Consistency Review and ETAT comments are not in conflict

Recommendation:

Consider assigning the commenting responsibilities to the same individual

Degree of Effect

N/A

Not Applicable or No Involvement

Enhanced

Positive effect on resources

None

No effect on resources

Minimum

Little adverse effect on resources

Moderate

Resources are affected; avoidance, minimization options available

Substantial

Substantial interaction required; avoidance, minimization, mitigation

Dispute

Does not conform to agency requirements

ETDM Environmental Screening Tool - Microsoft Internet Explorer

File Edit View Favorites Tools Help

Back

Search

Favorites

Address

https://www.fl-a-etat.org/est/

Go

Links

Google

Search

PageRank

Popups okay

AutoFill

Options

etdm

Efficient Transportation Decision Making

Environmental Screening Tool

est

My ETDM

Bookmarks

Project Input

Project Management

ETAT Review Screens

Sociocultural Effects

Logout

Current Selection: Manual Selection (7341)

New Search

Modify Search

Show on Map

Default Project from Selection: #7341 US1 Low Level Bridges Replacement

Saved Searches:

History:

Tools

Maintain Project Diary

Record Results of Project Review

Document Public Involvement Activities

Coordinate ETAT Activities

Reports

Wizards

Maps

Account Settings

Administration

Help

My ETDM Dashboard

Project Description

Review Purpose & N...

Describe Direct Ef...

GIS Analysis Results

Alternative 1 Details

Alternative	Status	From	To
#1	ETAT Review	North of SR-706 @ Coastal Way	South of CR-A1A,Ocean Blvd

Describe Direct Effects

☐ Use Short Form (limited to FL Department of Transportation associated resource issues)

Alternative 1

Wildlife and Habitat

-Select a Degree of Effect-

Comments:

Identify resources and level of importance:

Comment on effects to resources:

-Select a Degree of Effect-

N/A / No Involvement

None

Enhanced

Minimal

Moderate

Substantial

Dispute Resolution

Public Site

Project Summary

Participating Agencies

What's New

Contacts

Training

Events

Online Help

FAQ

Change Password

Show/Hide Map

Step 3. Summarize Reviews

- State Clearinghouse Coordinator submits Consistency Determination within 15 days
- FDOT District ETDM Coordinator summarizes ETAT comments and publishes Preliminary Programming Screen Summary Report within 60-days
- Reviewers receive email when summary report is available

Creating a Summary Report



Objective is to Assign A Summary Degree of Effect on Every Issue and Reconcile Comments

Cyan Number = Agencies agree on DOE

Gray = Agencies Disagree

Black = No Agency Comment

ETDM Environmental Screening Tool - Microsoft Internet Explorer

File Edit View Back Address https: Google Search PageRank 92 blocked AutoFill Options

etdm Efficient Transportation Decision Making **est** Environmental Screening Tool

My ETDM Bookmarks Project Input Project Management ETAT Review Screens Sociocultural Effects Logout

Current Selection: *Florida, Programming Screen, ETAT Review Complete* New Search Modify Search Show on Map

Default Project from Selection: #6651 SR 54 From Curley Road to Morris Bridge Road Saved Searches: History:

Tools Maintain Project Data

Wizards **Maps** **Account Settings** **Administration** **Help**

Summarize Results of ETAT Review Screen

Legend: [more...](#)

- N/A/N/A/ No Involvement
- Enhanced
- 0 None
- 2 Minimal to None (before 12/5/2005)
- 3 Moderate
- 4 Substantial
- 6 Dispute Resolution (PROGRAMMING)

Evaluation of Direct Effects

Natural														Cultural			Community		
Air Quality	Coastal and Marine	Contaminated Sites	Farmlands	Floodplains	Infrastructure	Navigation	Special Designations	Water Quality and Qu...	Wetlands	Wildlife and Habitat	Historic and Archaeo...	Recreation Areas	Section 4(f) Potenti...	Aesthetics	Economic	Land Use	Mobility		
ETDM Project #6651 SR 54 From Curley Road to Morris Bridge Road (PROGRAMMING)																			
ETAT Review Period From 10/3/2005 To 11/17/2005																			
Alternative #1 Status: ETAT Review Complete (From: Curley Road)																			
2	2				3	2						2	2			2	2		

publish

View all projects from selection

Public Site Project Summary Participating Agencies What's New Contacts Training Events Online Help FAQ Change Password

Show/Hide Map

ETDM Environmental Screening Tool - Microsoft Internet Explorer

File Edit View Favorites Tools Help

Back

Search

Favorites

Address

https://stage.fl-a-etat.org/est/

Go

Links >>

Google

Search

PageRank

92 blocked

AutoFill

Options

etdm

Efficient Transportation Decision Making

Environmental Screening Tool

est

My ETDM

Bookmarks

Project Input

Project Management

ETAT Review Screens

Sociocultural Effects

Logout

Current Selection: Florida, Programming Screen, ETAT Review Complete

New Search

Modify Search

Show on Map

Default Project from Selection:

#6651 SR 54 From Curley Road to Morris Bridge Road

Saved Searches:

History:

Tools

Maintain Project Diary

Record Results of Project Review

Document Public Involvement Activities

Coordinate ETAT Activities

Reports

Wizards

Maps

Account Settings

Administration

Help

Summarize Results of ETAT Review S...

Summarize Agency Reviews

Summarize Agency Reviews

expand all collapse all

#6651 SR 54 From Curley Road to Morris Bridge Road

District:	District 7	Phase:	Programming Screen
County:	Pasco County	From:	Curley Road
Planning Organization:	FDOT District 7	To:	Morris Bridge Road

Alternative #1 Details

Alternative	Status	From	To
#1	ETAT Review Complete	Curley Road	Morris Bridge Road

Agency Reviews for the Wildlife and Habitat Issue

Wildlife and Habitat

Southwest Florida Water Management District (11/17/2005)

US Fish and Wildlife Service (11/10/2005)

FL Fish and Wildlife Conservation Commission (11/02/2005)

The following organizations did not review the Wildlife and Habitat issue:

add coordinator feedback

add coordinator feedback

add coordinator feedback

Public Site

Project Summary

Participating Agencies

What's New

Contacts

Training

Events

Online Help

FAQ

Change Password

ETDM Environmental Screening Tool - Microsoft Internet Explorer

File Edit View Favorites Tools Help

Back Forward Stop Reload Home Search Favorites RSS Print Mail AutoFill Options

Address <https://stage.fl-a-etat.org/est/> Go Links

Google Search PageRank 92 blocked AutoFill Options

etdm
Efficient Transportation Decision Making

Environmental Screening Tool est

My ETDM Bookmarks Project Input Project Management ETAT Review Screens Sociocultural Effects Logout

Current Selection: **Florida, Programming Screen, ETAT Review Complete** [New Search](#) [Modify Search](#) [Show on Map](#)

Default Project from Selection:

#6651 SR 54 From Curley Road to Morris Bridge Road

 Saved Searches: History:

Tools

Maintain Project Diary

Record Results of Project Review

Document Public Involvement Activities

Coordinate ETAT Activities

Reports

Wizards

Maps

Account Settings

Administration

Help

Summarize Results of ETAT Review S... Summarize Agency Reviews

Agency Reviews for the Wildlife and Habitat Issue Wildlife and Habitat

Southwest Florida Water Management District (11/17/2005)

[add coordinator feedback](#)

Wildlife and Habitat Effect: Substantial

Identified Resources and Level of Importance:
None found.

Comments on Effects to Resources:
The project will result in adverse impacts to wildlife and habitat. Wildlife impacts include disruption of breeding activity and the elimination or degradation of foraging and roosting habitat. Species affected are wetland-dependent and/or upland species, including Listed Species such as wood stork and sandhill crane.

The project may cause additional isolation of floral and faunal species populations on either side of the roadway, particularly in the waterway corridors of New River and Basset Branch as a result of the expanded cross section of the facility to accommodate both new travel lanes and a median. The expanded cross section has the potential to result in additional wildlife fatalities, particularly turtles, other reptiles, and amphibians.

Habitat impacts include loss of foraging, roosting, and breeding habitat through direct destruction and indirect encroachment. The functions and values of both upland and wetland habitat will be lost or degraded, with the result that sensitive species may abandon the area altogether

Additional Comments (optional):
None found.

Public Site Project Summary Participating Agencies What's New Contacts Training Events Online Help FAQ Change Password

Show/Hide Map

ETDM Environmental Screening Tool - Microsoft Internet Explorer

File Edit View Favorites Tools Help

Back

Search

Favorites

Address

https://stage.fl-a-etat.org/est/

Go

Links >>

Google

Search

PageRank

92 blocked

AutoFill

Options

etdm

Efficient Transportation Decision Making

Environmental Screening Tool

est

My ETDM

Bookmarks

Project Input

Project Management

ETAT Review Screens

Sociocultural Effects

Logout

Current Selection: Florida, Programming Screen, ETAT Review Complete

New Search

Modify Search

Show on Map

Default Project from Selection:

#6651 SR 54 From Curley Road to Morris Bridge Road

Saved Searches:

History:

Tools

Maintain Project Diary

Record Results of Project Review

Document Public Involvement Activities

Coordinate ETAT Activities

Reports

Wizards

Maps

Account Settings

Administration

Help

Summarize Results of ETAT Review...

Summarize Agency Reviews

Respond to Agency Reviews

FL Fish and Wildlife Conservation Commission (11/02/2005)

[add coordinator feedback](#)

The following organizations did not review the Wildlife and Habitat issue:

- FL Department of Agriculture and Consumer Services
- Federal Highway Administration
- US Forest Service

Summary Degree of Effect

Issue: Wildlife and Habitat

Summary Effect: Moderate

-Select a Degree of Effect-

N/A / No Involvement

None

Enhanced

Minimal

Moderate

Substantial

Dispute Resolution

Comments:

This is where the Coordinator Assigns the Summary Degree of Effect and Documents the reasons for the specific selection

Update Summary

Public Site

Project Summary

Participating Agencies

What's New

Contacts

Training

Events

Online Help

FAQ

Change Password

Show/Hide Map

ETDM Environmental Screening Tool - Microsoft Internet Explorer

File Edit View Favorites Tools Help

Back

Search

Favorites

Address <https://stage.florida-etdm.org/est/> Go Links

Google Search PageRank 92 blocked AutoFill Options

etdm

Efficient Transportation Decision Making

Environmental Screening Tool **est**

My ETDM

Bookmarks

Project Input

Project Management

ETAT Review Screens

Sociocultural Effects

Logout

Current Selection: *Florida, Programming Screen, ETAT Review Complete*

New Search

Modify Search

Show on Map

Default Project from Selection:

#6651 SR 54 From Curley Road to Morris Bridge Road

 Saved Searches: History:

Tools

Maintain Project Diary

Record Results of Project Review

Document Public Involvement Activities

Coordinate ETAT Activities

Reports

Wizards

Maps

Account Settings

Administration

Help

Summarize Results of ETAT ...

Respond to Agency Reviews

Summarize Results of ETAT Review Screen

Legend: [more...](#)

N/A/N/A/ No Involvement

Enhanced

None

Minimal (after 12/5/2005)

Minimal to None (before 12/5/2005)

Moderate

Substantial

Dispute Resolution (PROGRAMMING)

Evaluation of Direct Effects

Natural										Cultural			Community	
Air Quality	Coastal and Marine	Contaminated Sites	Farmlands	Floodplains	Infrastructure	Navigation	On...	at	eo...	ti...	Economic	Land Use	Mobility	
ETDM Project #6651 SR 54 From Curley Road to Morris Bridge Road (PROGRAMMING)														
<div>publish</div> ETAT Review Period From 10/3/2005 To 11/17/2005														
Alternative #1														
Status: ETAT Review Complete (From: Curley Road)														
2	2			3	2			3	2	2		2	2	

View all projects from selection

Black Text = Summary Degree of Effect Assigned

Show/Hide Map

Public Site

Project Summary

Participating Agencies

What's New

Contacts

Training

Events

Online Help

FAQ

Change Password

ETDM Environmental Screening Tool - Microsoft Internet Explorer

File Edit View Favorites Tools Help

Back

Search

Favorites

Address

https://stage.fl-a-etat.org/est/

Go

Links >>

Google

Search

PageRank

92 blocked

AutoFill

Options

etdm

Efficient Transportation Decision Making

Environmental Screening Tool

est

My ETDM

Bookmarks

Project Input

Project Management

ETAT Review Screens

Sociocultural Effects

Logout

Current Selection: Florida, Programming Screen, ETAT Review Complete

New Search

Modify Search

Show on Map

Default Project from Selection:

#6651 SR 54 From Curley Road to Morris Bridge Road

Saved Searches:

History:

Tools

Maintain Project Diary

Record Results of Project Review

Document Public Involvement Activities

Coordinate ETAT Activities

Reports

Wizards

Maps

Account Settings

Administration

Help

Summarize Results of ETAT Review...

Respond to Agency Reviews

Identify Required Technical ...

Identify Required Technical Studies

#6651 SR 54 From Curley Road to Morris Bridge Road

District:	District 7	Phase:	Programming Screen
County:	Pasco County	From:	Curley Road
Planning Organization:	FDOT District 7	To:	Morris Bridge Road

Configure Technical Studies

Technical Studies

ENGINEERING

Bridge Development Report

Conditions:

Add permit conditions to be considered as the project moves into the project development phase

Bridge Hydraulic Report

Conceptual Design Roadway Plan Set

Conditions:

Public Site

Project Summary

Participating Agencies

What's New

Contacts

Training

Events

Online Help

FAQ

Change Password

Show/Hide Map

ETDM Environmental Screening Tool - Microsoft Internet Explorer

File Edit View Favorites Tools Help

Back

Search

Favorites

Address

https://stage.fl.../est/

Go

Links

Google

Search

PageRank

92 blocked

AutoFill

Options

etdm

Efficient Transportation Decision Making

Environmental Screening Tool

est

My ETDM

Bookmarks

Project Input

Project Management

ETAT Review Screens

Sociocultural Effects

Logout

Current Selection: Florida, Programming Screen, ETAT Review Complete

New Search

Modify Search

Show on Map

Default Project from Selection:

#6651 SR 54 From Curley Road to Morris Bridge Road

Saved Searches:

History:

Tools

Maintain Project Diary

Record Results of Project Review

Document Public Involvement Activities

Coordinate ETAT Activities

Reports

Wizards

Maps

Account Settings

Administration

Help

Summarize Results of E...

Respond to Agency Revi...

Identify Required Techni...

Identify Required Pe...

Identify Required Permits

#6651 SR 54 From Curley Road to Morris Bridge Road

District:	District 7	Phase:	Programming Screen
County:	Pasco County	From:	Curley Road
Planning Organization:	FDOT District 7	To:	Morris Bridge Road

Configure Permits

Permits

County/Municipality - Local

☒ Local Environmental Permits

Conditions:

☐ Add new permit to "County/Municipality - Local" category

☐ Emergency

Public Site

Project Summary

Participating Agencies

What's New

Contacts

Training

Events

Online Help

FAQ

Change Password

Show/Hide Map

Difference Between A Preliminary Programming Summary Report and A FINAL Programming Summary Report is the presence of a Class of Action Determination

etdm
 Efficient Transportation Decision Making

 Environmental
 Screening Tool **est**

My ETDM

Bookmarks

Project
InputProject
ManagementETAT Review
ScreensSociocultural
Effects

Logout

Current Selection: *Florida, Programming Screen, ETAT Review Complete*

New Search

Modify Search

Show on Map

Default Project from Selection:

Saved Searches:

History:

#6651 SR 54 From Curley Road to Morris Bridge Road

Tools

- Maintain Project Diary
- Record Results of Project Review
- Document Public Involvement Activities
- Coordinate ETAT Activities

Reports

Wizards

Maps

Account Settings

Administration

Help

Summarize Results of E...

Respond to Agency Revi...

Identify Required Techni...

Class of Action Dete...

Class of Action Determination



#6651 SR 54 From Curley Road to Morris Bridge Road

District:	District 7	Phase:	Programming Screen
County:	Pasco County	From:	Curley Road
Planning Organization:	FDOT District 7	To:	Morris Bridge Road

Class of Action

Class of Action	Other Actions
<input checked="" type="radio"/> Environmental Assessment <input type="radio"/> Environmental Impact Statement <input type="radio"/> Categorical Exclusion <input type="radio"/> State Environmental Impact Report	<input checked="" type="checkbox"/> Section 4(f) Evaluation <input type="checkbox"/> Section 106 Consultation <input checked="" type="checkbox"/> Endangered Species Assessment

Lead Agency		Cooperating Agency/Agencies		
<input type="radio"/> FDOT	<input type="radio"/> FTA	<input type="checkbox"/> COE	<input checked="" type="checkbox"/> FRA	<input type="checkbox"/> NMFS
<input checked="" type="radio"/> FHWA	<input type="radio"/> USCG	<input type="checkbox"/> EPA	<input type="checkbox"/> FTA	<input type="checkbox"/> USCG

Public
SiteProject
SummaryParticipating
Agencies

What's New

Contacts

Training

Events

Online
Help

FAQ

Change
Password

Show/Hide Map

ETDM Environmental Screening Tool - Microsoft Internet Explorer

File Edit View Favorites Tools Help

Back Forward Stop Home Search Favorites PageRank Popups okay AutoFill Options

Address <https://www.fla-etat.org/est/> Go Links »

Google Search

etdm *Efficient Transportation Decision Making*

Environmental Screening Tool **est**

My ETDM Bookmarks Project Input Project Management ETAT Review Screens Sociocultural Effects Logout

Current Selection: **Manual Selection (6051,5851,5791,5713,5712,5591,5572,5571,5211,5051,4994,4831,4792,4631,4450,...)** New Search Modify Search Show on Map

Default Project from Selection: **#5851 S.R A1A Blue Heron Blvd. Low Level Bridge Replacement** Saved Searches: History:

Tools **Reports** **Wizards** **Maps** **Account Settings** **Administration** **Help**

Project Diary Project Effects Reminders Agency Participation

Configure and Pri... Projects Needing ... Read Reviews an... List of Permits List of Technic...

List of Technical Studies

#5851 S.R A1A Blue Heron Blvd. Low Level Bridge Replacement

District:	District 4	Phase:	Programming Screen
County:	Palm Beach County	From:	Entrance to Phil Foster Park
Planning Organization:	FDOT District 4	To:	Lake Drive

Technical Studies

Technical Study	Type	Conditions
Permits Application Package	Other	
Endangered Species Biological Assessment	ENVIRONMENTAL	
Wetlands Evaluation Report	ENVIRONMENTAL	
Cultural Resource Assessment	ENVIRONMENTAL	
Contamination Screening Evaluation Report	ENVIRONMENTAL	
EFH Assessment	Other	
Public Involvement Plan	ENVIRONMENTAL	
Conceptual Stage Relocation Plan	ENVIRONMENTAL	

Public Site Project Summary Participating Agencies What's New Contacts Training Events Online Help FAQ Change Password

Show/Hide Map

Current Selection: **Manual Selection (6051,5851,5791,5713,5712,5591,5572,5571,5211,5051,4994,4831,4792,4631,4450,...)** New Search Modify Search Show on Map

Default Project from Selection: Saved Searches: History:

12 US 98 Bridge No. 380047

Tools

Reports

- Project Diary
- Project Effects
- Reminders
- Agency Participation

Wizards

Maps

Account Settings

Administration

Help

Configure an...	Projects Nee...	Read Review...	List of Techni...	Project Co...	List of Permits
Responses to Specific ETAT Review Comments					
<u>Response Date</u>	<u>Planning Organization Response</u>	<u>Issue</u>	<u>Review Organization</u>	<u>Review Date</u>	
8/23/2005	During the PD&E phase of the project the following questions on the Corps will be answered. At this time, these things are not known. Thus, we will rate this as a moderate impact with additional information to be provided. Bridge demolition and construction techniques, potential fill, staging areas, water quality, stormwater issues, potential threatened or endangered species, coordination, all contribute to a potential greater than minimal effect on the aquatic resource. Once these issues are addressed the Corps may find only minimal effect This is a bridge replacement project and the replacement bridge will be brought up to current standards which may require some minor widening of the structure.	Wetlands	US Army Corps of Engineers	8/23/2005	review
8/23/2005		Contaminated Sites	Suwannee River Water Management District	8/23/2005	review

ETDM Environmental Screening Tool - Microsoft Internet Explorer

File Edit View Favorites Tools Help

Back Forward Stop Home Search Favorites

Address <https://www.fl-a-etat.org/est/> Go Links

Google Search PageRank Popups okay AutoFill Options

etdm
Efficient Transportation Decision Making

Environmental Screening Tool **est**

My ETDM Bookmarks Project Input Project Management ETAT Review Screens Sociocultural Effects Logout

Current Selection: **Manual Selection (6051,5851,5791,5713,5712,5591,5572,5571,5211,5051,4994,4831,4792,4631,4450,...)**
New Search Modify Search Show on Map

Default Project from Selection: #5851 S.R A1A Blue Heron Blvd. Low Level Bridge Replacement
Saved Searches:
History:

Tools
Reports
Project Diary
Project Effects
Reminders
Agency Participation

Wizards
Maps
Account Settings
Administration
Help

Configure an... Projects Nee... Read Review... List of Permits List of Techni... Screening ...

Screening Summary Report

Legend: [more...](#)
N/A/N/A/ No Involvement
Enhanced
None
Minimal to None (before 12/5/2005)
Moderate
Substantial
Dispute Resolution (PROGRAMMING)

Evaluation of Direct Effects														
Natural										Cultural				
Air Quality	Coastal and Marine	Contaminated Sites	Farmlands	Floodplains	Infrastructure	Navigation	Special Designations	Water Quality and Du...	Wetlands	Wildlife and Habitat	Historic and Archaeo...	Recreation Areas	Section 4(f) Potenti...	Aesthetics
ETDM Project #5851 S.R A1A Blue Heron Blvd. Low Level Bridge Replacement (PROGRAMMING)														
ETAT Review Period From 6/30/2005 To 8/14/2005														
Alternative #1	2	3	2	2	2	2	2	2	3	3	2	2	2	2
Published: 10/19/2005 (From: Entrance to Phil Foster Park To: Lake Drive)														
View all projects from selection														

Show/Hide Map

Public Site Project Summary Participating Agencies What's New Contacts Training Events Online Help FAQ Change Password

ETDM Environmental Screening Tool - Microsoft Internet Explorer

File Edit View Favorites Tools Help

Address <https://www.fla-etat.org/est/>

Google Search PageRank Popups okay AutoFill Options

etdm
Efficient Transportation D

Current Selection: Man
Default Project from Sele
#6051 I-95/CR 210 Interchan

Tools

Reports

- Project Diary
- Project Effects
- Reminders
- Agency Participation

Wizards

Maps

Account Settings

Administration

Help

Project Input Project Management ETAT Review Screens Sociocultural Effects Logout

4631,4450,... New Search Modify Search Show on Map

History:

Projects Needing ... Read Reviews an... List of Technical ... List of Permits PDF Viewer

Back

Sign

Summary Report

ETDM Summary Report

Project #6051 - I-95/CR 210 Interchange

Programming Screen - Published on 11/21/2005

Printed on: 2/17/2006

1 of 24

Public Site Project Summary Participating Agencies What's New Contacts Training Events Online Help FAQ Change Password

Show/Hide Map

When Summary Report is Published, It's available to all users and they can all Print, Save, Email as a standard PDF Report

Current Selection: *Manual Selection* (6051.5851.5791.5713.5712.5591.5572.5571.5211.5051.4994.4831.4792.4631.4450....

[New Search](#)[Modify Search](#)[Show on Map](#)

Default Project from Selection:

Saved Searches:

History:

#6051 I-95/CR 210 Interchange

Tools

Reports

Project Diary

Project Effects

Reminders

Agency Participation

Wizards

Maps

Account Settings

Administration

Help

Projects Needing ...

[Read Reviews and...](#)

List of Technical ...

List of Permits

PDF Viewer

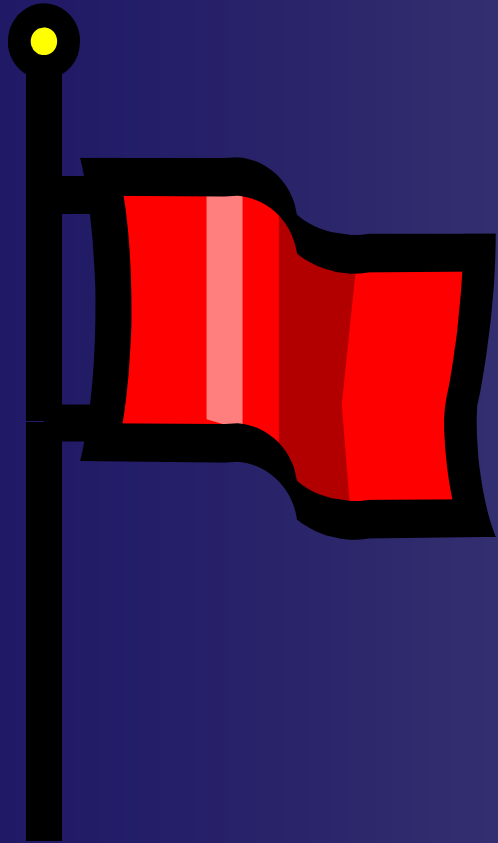
[Back](#)

 Sign ▼

Table of Contents

1	Project Details
1.1.	Project Description
1.2.	Public Comment Summary
1.3.	Project Commitments
1.4.	Community Desired Features
1.5.	Purpose and Need Statement
1.6.	ETAT Comments: Purpose and Need Reviews
1.7.	Required Permits
1.8.	Required Technical Studies
1.9.	Class of Action Determination
1.10.	Dispute Logs
1.11.	Project Attachments
2	Alternative Details
2.1.	Summary Degree of Effect Chart
2.2.	Alternative #1

Triggers for Dispute



- Project is contrary to:
 - ✧ State goals/policies
 - ✧ State/federal agency programs/plans
- Project cannot be permitted
- Project has significant environmental costs:
 - ✧ funding, quality of life impacts, etc.
- Project is inconsistent with comprehensive plan

Selecting a Red Flag

ETDM Environmental Screening Tool - Microsoft Internet Explorer

File Edit View Favorites Tools Help

Back Forward Stop Home Search Favorites RSS Print Mail

Address <https://stage.fl-a-etat.org/est/index.jsp?#> Go Links

etdm Efficient Transportation Decision Making **est** Environmental Screening Tool

Session Active My ETDM ETAT Review Screens Bookmarks Logout

Current Selection: Manual Selection (8350, 6431, 5831, 4470, 2890, 2852, 2819) New Search Modify Search Show on Map

Default Project from Selection: #5831 SR 70 Add Lanes Saved Searches: History:

Tools

- Record Results of Project Review
- Coordinate ETAT Activities
- Cumulative Effects

Describe Direct Effects

#5831 SR 70 Add Lanes

Describe Direct Effects Form

Alternative 1 Wildlife and Habitat **Dispute Resolution**
** dispute justification required below

Dispute Type

Please select a justification for assigning the degree of effect of *Potential Dispute* / *Dispute Resolution* from the options below:

- ☒ Project appears to be non-permittable
- ☐ Project has significant environmental cost
- ☐ Project is contrary to an agency program, plan or initiative

Justification for Dispute

Citation for Dispute

Recommended Actions for Dispute

Public Site | Project Summary | Participating Agencies | What's New | Contacts | Training | Events | Online Help | FAQ | Change Password

This Site is maintained by the Florida Department of Transportation Environmental Management Office. For additional information, please e-mail questions or comments to help@fl-a-etat.org or call 850-414-5334

Local intranet

Show/Hide Map

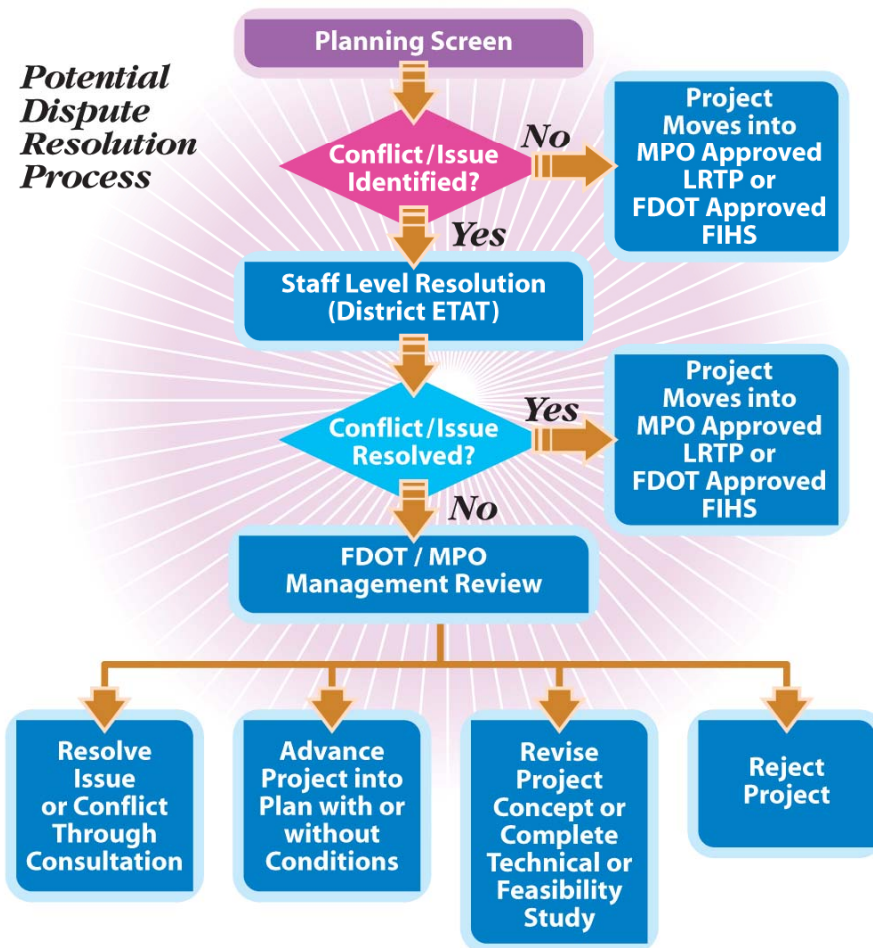
etdm



Informal Dispute Resolution

- Staff level consultation and document resolution
 - Recommend environmental or technical studies for ETAT reviews
 - Advance the project with “flags” or recommendations for Project Development
- Resolved or initiate Formal Dispute Resolution

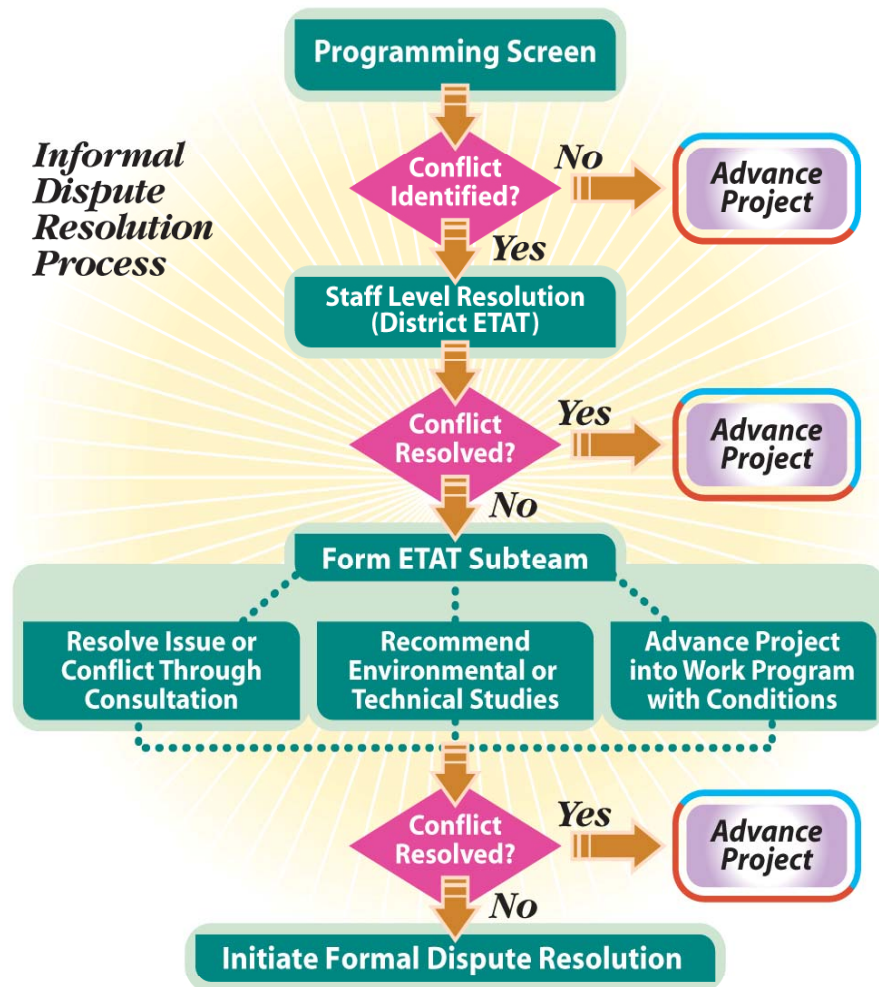
Handling Planning Disputes



- Considered a “Potential Dispute” at the planning phase
- Provides valuable information to the project sponsor decision makers
- Does not stop the project from moving forward

Handling Programming Disputes

- All issues must be resolved before Final Design



Formal Dispute Resolution

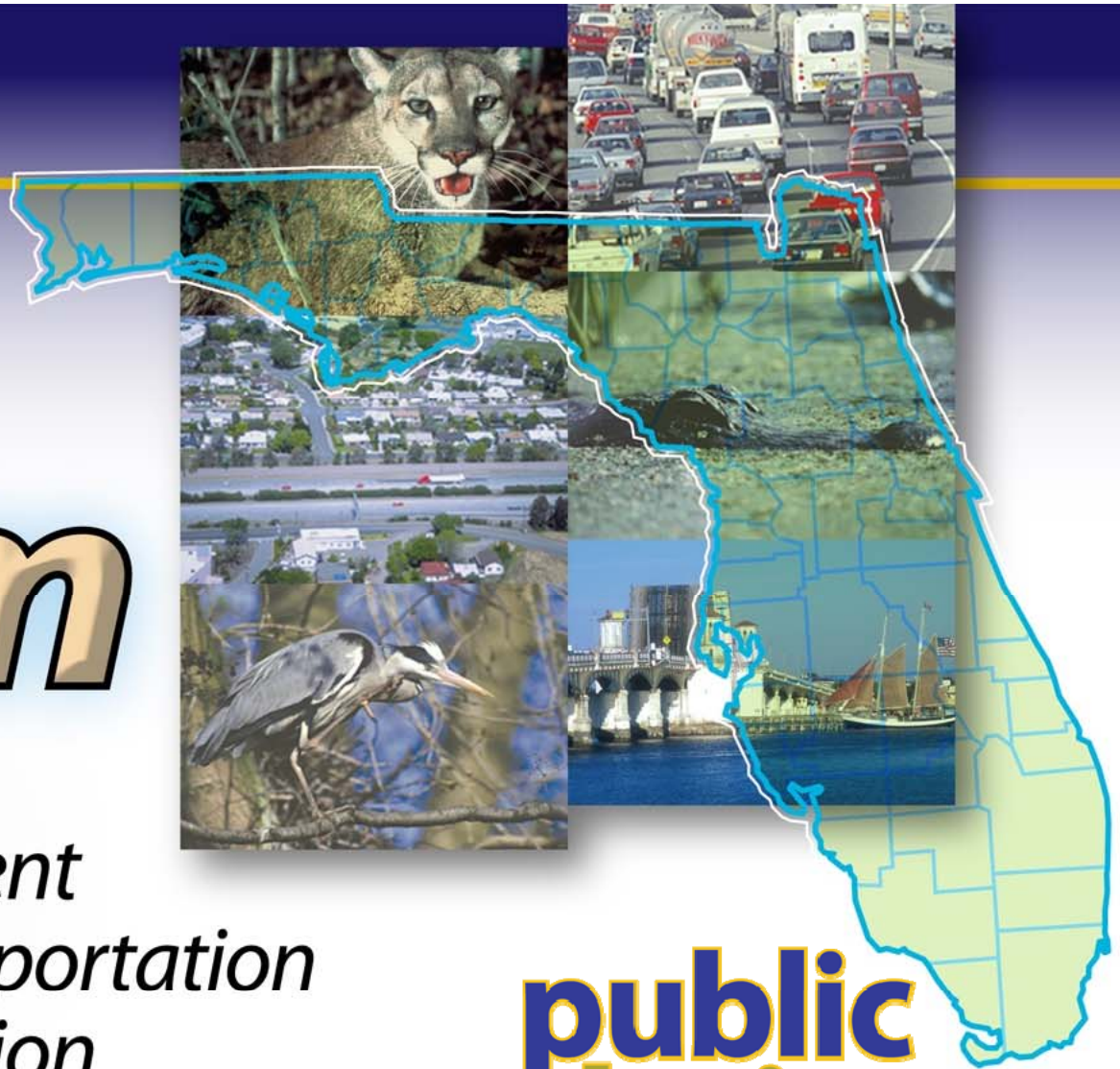
- Develop Issue Paper
- Reviewed at Local Agency Heads
- Reviewed at Statewide Agency Heads
- Results
 - Modify Project Concept
 - Advance Project
 - Reject Project

Florida's *etdm* Process

Efficient
Transportation
Decision
Making

public
web site

<http://etdmpub.fl-a-etat.org>

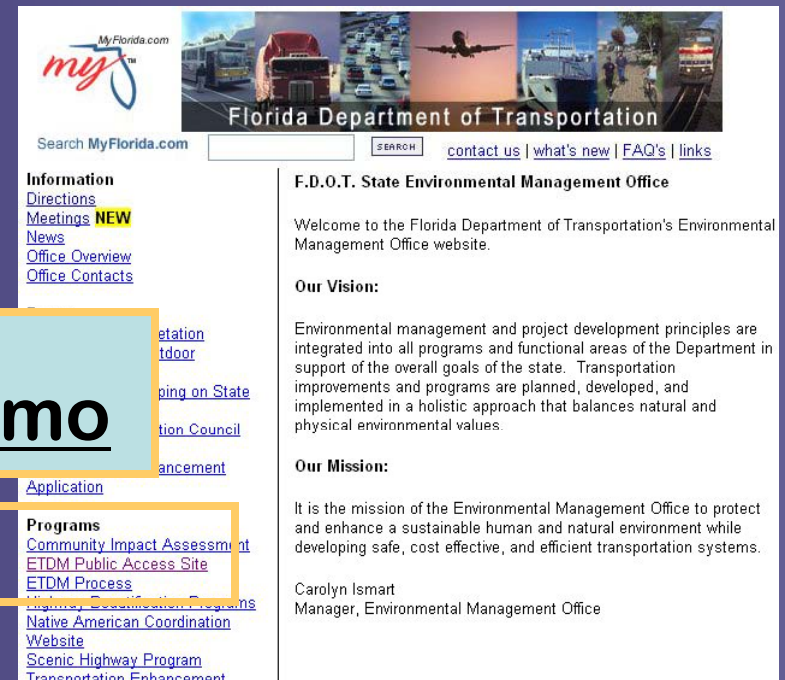


How Can the Public Get Involved?

- Contact your MPO or FDOT District Office
- Attend Public Meetings
- Visit the ETDM Public Web site @

<http://etdmpub.fla-etat.org>

Or find link at
www.dot.state.fl.us/emo



The screenshot shows the FDOT website with the 'myFlorida.com' logo at the top. Below the logo is a search bar and navigation links: 'contact us | what's new | FAQ's | links'. The main content area is titled 'F.D.O.T. State Environmental Management Office'. It includes a welcome message, a vision statement, and a mission statement. A sidebar on the left lists various links: 'Information', 'Directions', 'Meetings NEW', 'News', 'Office Overview', 'Office Contacts', 'Application', 'Programs', 'Community Impact Assessment', 'ETDM Public Access Site', 'ETDM Process', 'Highway Beautification Programs', 'Native American Coordination Website', 'Scenic Highway Program', and 'Transportation Enhancement'. An orange arrow points from the text box to the 'ETDM Public Access Site' link in the sidebar.

etdm



Finding Your Way Around

Top Menu Bar – open new pages

The screenshot shows the etdm website with several annotations. A dashed purple box highlights the left sidebar, which includes a 'Project Search' section with a 'new search' button and a list of search options: Project Number, Project Name, Planning Organization, County, District, and Degree of Effect. Below this is a 'Help' section titled 'Welcome Page' that describes the site's purpose. Another dashed purple box highlights the top menu bar, which contains links for 'Welcome', 'General Information', 'Project Diary', 'Project Effects', and 'ETDM Maps'. A third dashed purple box highlights the bottom menu bar, which contains links for 'Site Map', 'Contact Us', 'Privacy Statement', 'No Javascript', 'Hide DOT Banner', and 'Get Adobe Acrobat Reader'. A large blue box with white text is overlaid on the main content area, reading 'Project Search – Find projects in database'. The main content area itself features a 'welcome!' message, a map of Florida, and sections for 'Getting Started', 'Staying Connected', 'About ETDM', and 'Finding A Project'.

etdm Welcome General Information Project Diary Project Effects ETDM Maps

Welcome >> Welcome Page

Project Search new search

Select a search option:

- Project Number
- Project Name
- Planning Organization
- County
- District
- Degree of Effect

Help

Welcome Page

The Welcome Page of the ETDM Public Access Site includes information about the ETDM Process and instructions for finding a project, getting started in using the Site, and how to sign up to receive emails concerning projects of interest. The

Getting Started

The Efficient Transportation Decision Making (ETDM) Web site makes information available about proposed transportation projects in the state of Florida. For more information about the site, see the options in the Welcome menu.

Staying Connected

Receive site updates and emails about projects as they move through the ETDM process.

Project Search – Find projects in database

welcome!

About ETDM

Florida's ETDM process defines the procedures for planning transportation projects, conducting environmental reviews, and developing and permitting projects. For more information about ETDM, please visit the ETDM Library.

Finding A Project

To find a proposed transportation project, use the **Project Search** feature. If you know the four-digit ETDM number assigned to the project, select the **Project Number** search option, then enter the project number and press "go." Projects can also be found by typing in the Project Name, Planning Organization, or the County or FDOT District where the project is located.

Site Map | Contact Us | Privacy Statement | No Javascript | Hide DOT Banner | Get Adobe Acrobat Reader

This Site is maintained by the Florida Department of Transportation Environmental Management Office.
For additional information, please e-mail questions or comments to etdmpub@fla-etdm.org or call 850-414-5334

Help – describes current page

Bottom menu – quick links

etdm



Get Involved

1

Provide Contact Information

Please fill out your information:

First Name:	<input type="text"/>	Optional
Last Name:	<input type="text"/>	
Address:	<input type="text"/>	
City:	<input type="text"/>	
State:	<input type="text"/>	Optional
Zip:	<input type="text"/>	Optional
Email Address:	<input type="text"/>	

2

Select notices to receive

Check the options below to indicate the type of notices you would like to receive:

☐ Yes, send me an email when general ETDM information is updated, such as manuals and guidance.

☐ Yes, send me an email when the ETDM Web site is updated.

☒ Yes, send me an email when new information is available about ETDM projects, as indicated below:

☐ Watch the project that I currently have selected in the *Project Selection box*.

☐ Watch all projects that meet the following criteria below:

Specify all regions of interest:

--All--
District 1 - Charlotte County
District 1 - Collier County
District 1 - Desoto County
District 1 - Glades County
District 1 - Hardee County

To select multiple Regions, Degrees of Effect, or Issues hold down the ctrl key as you click on your selections.

Specify ETAT Review Summary Preferences:

Degree of Effect(s):
--All--
N/A / No Involvement
Enhanced
None
Minimal

Issue(s):
--All--
Aesthetics
Air Quality
Coastal and Marine
Contaminated Sites

Disclosure: Please view the [FDOT Privacy Statement](#). Check the box if you agree to this statement.

☐ I agree.

Save Preferences

3

Agree to FDOT Privacy Statement

4

Click to save

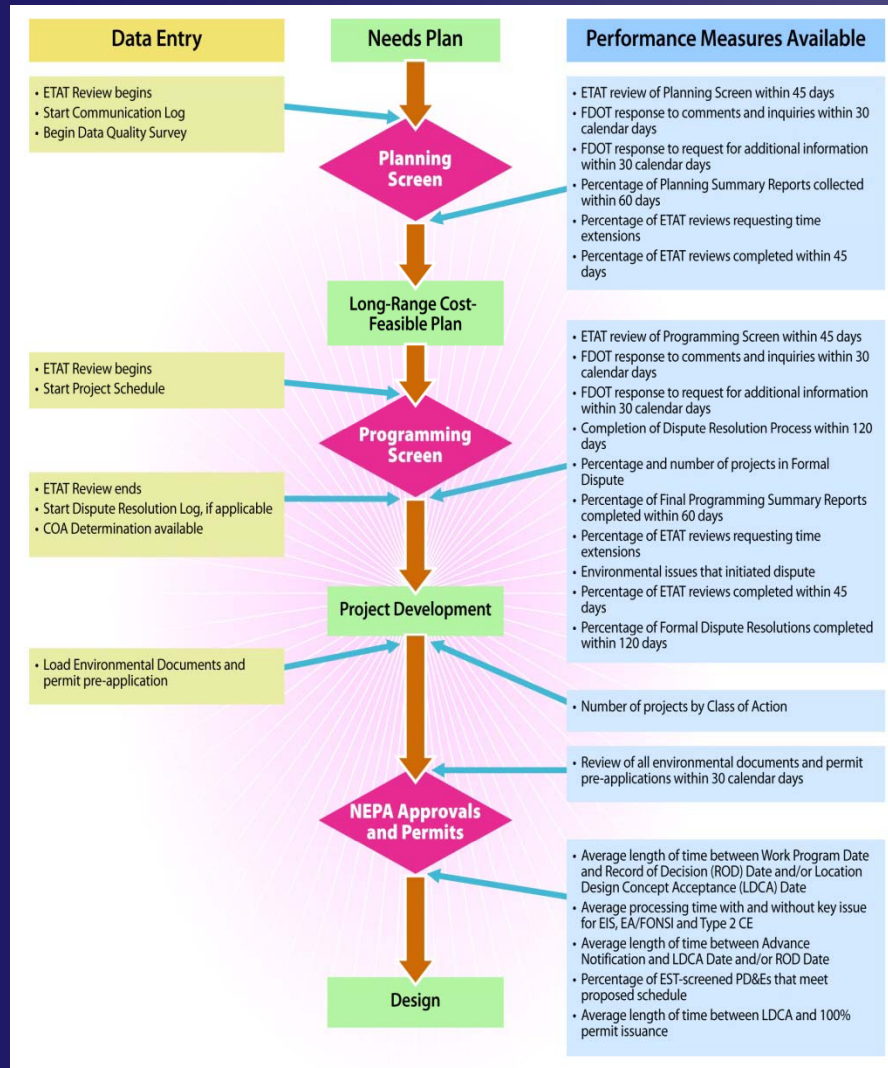
etdm



Technology Support

- Training
 - Hands-on workshops
 - Web-based classes
- User Support
 - On-line self help
 - Help desk
- Maintenance
 - Application version control
 - Data update procedures

Performance Measures



- Measuring
 - Timelines
 - Review Periods
 - Quality of Comments or Input
 - Quality of Information
- Tools for Tracking
 - EST Performance Measures Module
 - Surveys of ETAT and Districts

etdm



Performance Measure Reporting

Information Sources

ETDM Screens
and Summary
Reports

Project
Schedule
(Environmental
Document Timeline)

Surveys

performance
measures

Monitoring Tools and Reports

Priority Performance Measure Summary Report

Agency: Region: District:
Start Date: 01/01/2007 End Date: 06/30/2007
Generate Report Clear Query

Goal 1: Improve interagency coordination and dispute resolution
Performance Measure 1.1 ETAT review for Planning and Programming Screens (45 days, or 60 days if ETAT member requests a time extension)

Performance Indicators / Evaluation Criteria				
Performance consistently meets expectations: 100-85 percent of reviews completed within 45 days, or 60 days if ETAT member requests a time extension				
Performance is acceptable but needs to be improved: Less than 75 percent of reviews completed within 45 days, or 60 days if ETAT member requests a time extension				
Performance is below expectations: 84-75 percent of reviews completed within 60 days if ETAT member requests a time extension				

Performance Results	
Planning, within the review period	1 Planning, total
Programming, within the review period	1 Programming, total
Meets Expectations:	100% of reviews completed within review period (45 days, or 60 days if ETAT members request a time extension)

Summary Report Status Report

Selected Criteria Summary	
Phase:	Planning and Programming
Created:	All Counties
Start Date:	04/01/2007
End Date:	06/30/2007
Combined Planning / Programming Summary Reports Generated During (04/01/2007 to 06/30/2007)	
Total Projects Published / Republished:	22 (20 Alternatives)
Total Projects Published:	14 (15 Alternatives)
Total Projects Republished:	8 (11 Alternatives)

Summary Report Matrix (04/01/2007 to 06/30/2007)	
Planning (City)	District 1 District 2 District 3 District 4
Total Projects Published	4 1 0 0 1
Total Projects Republished	3 1 0 0 2
Total Projects Published / Republished	3 0 1 0 2
Total Projects Published / Republished	7 1 1 1 7

Planning Phase Summary	
Published First Time / On Time	0 1 0 0 1
Published First Time / On Time	2 0 0 0 3

*Total % looks at all projects that qualify for a summary report & were actually completed. ex: Total Projects Published = all projects that were actually completed. Then dividing that by the number of projects that were actually completed.

Planning Phase Summary	
Total Projects Published / Republished	4 (5 Alternatives)
Published First Time / On Time	0 1 0 0 1
Published First Time / On Time	2 0 0 0 3

Performance Results	
Planning, within the review period	1 Planning, total
Programming, within the review period	1 Programming, total
Meets Expectations:	100% of reviews completed within review period (45 days, or 60 days if ETAT members request a time extension)

Project Schedule Tool			
Block:	District 1	Phase:	Project Development
County:	Clatsop County	From:	11 830 (West of 34th Ave)
Planning Organization:	76	Financial Management No.:	18 830 (Benton Rd)
Plan ID:		Contact Email:	
Contact Name / Phone:		Contact Email:	

Class of Action / Categorical Exclusion	
Planning Screen Modification	Actual Date
Planning Screen Summary Report Published	04/03/2007
Advance Notification	01/05/2007
Programming Screen Summary Report Published	12/01/2006
Class of Action Determination	03/01/2006
Public Meeting	
Location Design Concept Acceptance	
Re-evaluation Commencement	
100% Permit Issuance	

Quarterly ETAT Participation Report	
Organization:	PL Fish and Wildlife Conservation Commission
Start Date:	04/01/2007
End Date:	06/30/2007
Review Summary for PL Fish and Wildlife Conservation Commission	
Number of Projects Reviewed:	21
Number of Alternatives Reviewed:	20
Number of Reviews Completed:	85

Review Summary	
Organization:	PL Fish and Wildlife Conservation Commission
Start Date:	04/01/2007
End Date:	06/30/2007
Review Summary for PL Fish and Wildlife Conservation Commission	
Number of Projects Reviewed:	21
Number of Alternatives Reviewed:	20
Number of Reviews Completed:	85

Review Summary	
Organization:	PL Fish and Wildlife Conservation Commission
Start Date:	04/01/2007
End Date:	06/30/2007
Review Summary for PL Fish and Wildlife Conservation Commission	
Number of Projects Reviewed:	21
Number of Alternatives Reviewed:	20
Number of Reviews Completed:	85

Review Summary	
Organization:	PL Fish and Wildlife Conservation Commission
Start Date:	04/01/2007
End Date:	06/30/2007
Review Summary for PL Fish and Wildlife Conservation Commission	
Number of Projects Reviewed:	21
Number of Alternatives Reviewed:	20
Number of Reviews Completed:	85

etdm





Efficient Transportation Decision Making

What Has Been Accomplished To Date?



Current Project Status

- Approximately 343 project screenings
 - 180 Planning Screenings
 - 163 Programming Screenings (152 different projects)
- 63 Class of Action Determinations
 - 43 Categorical Exclusions
 - 9 Environmental Assessments
 - 6 Environmental Impact Statements
 - 5 State Environmental Impact Reports

Expected₍₁₎ vs. Realized Benefits

<u>Expected Benefit</u>	<u>Realized</u>	<u>Examples</u>
Early agency and community involvement; Earlier/Better Awareness of Potential Issues	YES	45 projects Identified this benefit
Early identification of potential avoidance and mitigation strategies/options	Some	SR 46, Sharpes Ferry, 8001, 8002
Less duplication of effort -Attention focused on key technical issues during PD&E	Some	SW 107 Ave, Okbee Rd. US 17/92
Meaningful dispute resolution on projects addressed before programming (a design phase)	Some	7341, 7740, 8127, 3313,
Fewer projects or alternatives subject to detailed reviews	Some	7341, 7740, 8127, 3313,
Agencies and affected community have access to quality comprehensive data	YES	FGDL – 500 Data layers
Earlier project approvals	Some	I-95 Managed Lanes, Esc Bay Bridge
Integrating Environmental review and permitting information processes	Starting	D4 has begun
Timely Decision Making	Some	I-95 Managed Lanes



(1) Source: *ETDM Progress Report 1*, August 2001



Project Benefits

Specific Project Breakdown of ETDM Benefits Reported by Districts

Benefit of Using the ETDM Process	# of Projects Reported
ETAT provided early issue identification and coordination on issue resolution, thereby avoiding project time delays	28
ETAT coordination and involvement in project was early and continuous allowing for project to stay on schedule	20
Scope of environmental technical studies was reduced or need for study eliminated	15
ETAT technical reviews and comments on project studies was timely or expedited	15
The number of late project issues was reduced or eliminated, thereby avoiding late project time delays	15
ETAT assistance allowed for focused technical studies; thereby reducing unnecessary study and saving time	14
Project scope and design concept was modified	9
ETAT was always available to assist on project issues and field reviews, thereby avoiding project time delays	9
Duplication of project information and technical studies was reduced or eliminated, thereby reducing unnecessary study and saving time	9
ETAT participated in cooperative problem-solving on projects allowing for project to stay on schedule	8
The amount of interagency conflicts was reduced or eliminated, thereby avoiding project time delays	8
Reduce number of alternatives	8
ETAT cooperation, upon request, reduced time review periods and expedited project delivery	7
Project was dropped from further study	6
ETAT cooperation and working relationships contributed to problem solving on project, thereby avoiding project time delays	6
Downgraded project Class of Action	5
Project delivery time and production schedule was expedited due to ETAT technical assistance on project	3
ETAT assisted in reducing the number of project alternatives for additional study	2
ETAT Assisted in expediting project permits	1



ETDM Benefits Realized

- Due to early interagency coordination there has been a reduction in number of project reasonable alternatives being carried forward for study.
- Downgrades in project's Class of Action to satisfy NEPA has resulted, thus saving time and money.
- Better project scopes of services have resulted, where unnecessary technical studies are eliminated, thereby saving time and money.
- Early screening of projects has identified and eliminated projects that are "fatally flawed."
- Interagency relationships, communication and trust has greatly improved.
- Increased knowledge of each agency's mission and jurisdictional requirements has improved.
- The frequency of the Requests for Additional Information (RAIs) has been reduced.
- The EST makes the process open and transparent in nature.
- Communication today among partnering agencies is collaborative and non-adversarial.
- Established expedited review times allows FDOT to maintain project schedules.
- Partnering agencies raising new issues late in project development has been reduced.



ETDM Benefits Realized

- Availability and access to agency technical experts, when needed, at FDOT's request is a major benefit of ETDM.
- The EST provides project details, GIS analyses, agency comments, commitments, recommendations, project summaries, decision history, etc. All of which is stored, tracked, and managed electronically leading to a substantial reduction in paperwork.
- ETDM allows for early mitigation opportunities; early Purpose and Need Statements; early range of alternatives to be developed, reviewed, and accepted prior to project development.
- The ETDM process facilitates linking transportation planning and NEPA.
- The public has continuous input throughout the ETDM process through public outreach initiatives and a public ETDM website.
- The permitting process with the Army Corps of Engineers has greatly improved.
- The Army Corp of Engineers has developed programmatic language for a regional general permit (SAJ-92) that may be used for linear transportation projects if the project was screened through ETDM



Benefits Converted to Estimated Time and Cost Savings

District Estimated Benefits Realized Since October 2004 Implementation

Cost Savings: \$16.3 M

Cumulative Time Savings: 48 years





Efficient Transportation Decision Making

Thank You for the Opportunity to Present Questions??



Peter McGilvray

Peter.McGilvray@dot.state.fl.us

