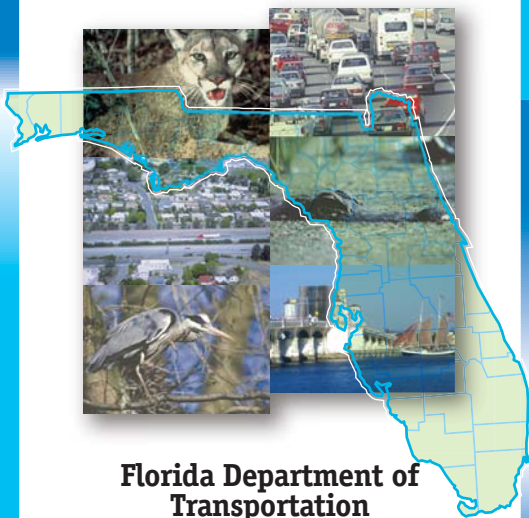


# *etdm*

**Efficient  
Transportation  
Decision  
Making**

*...While Protecting Florida's Environment*

**The Florida Department of  
Transportation has developed  
an innovative process for  
planning and developing  
transportation projects.**



**Florida Department of  
Transportation  
Central Environmental  
Management Office**

605 Suwannee Street/Mail Station 37

Tallahassee, Florida 32399-0450

850.414.4447 tel.

850.414.4443 fax.

866.374.3368 Ex. 4447 Toll Free

**[www.dot.state.fl.us/emo](http://www.dot.state.fl.us/emo)**

## Florida DOT is Changing the Way it Does Business...

FDOT in partnership with FHWA and FTA has developed and implemented a completely new method for planning and delivering transportation projects.

This process, developed over 3 years in collaboration with 23 state and federal agencies, produces better transportation decisions for the State of Florida.

## The District *etdm* Team

Each of Florida's seven geographic FDOT Districts will have an ETDM Team comprised of the following:

- **FDOT ETDM Coordinator** - responsible for overall coordination within the Department and with the MPOs, resource agencies and the community.
- **MPO ETDM Coordinator** - responsible for agency and community interaction in MPO areas through the Programming Screen Phase (except for bridges and FHHS).
- **Community Liaison Coordinator** - responsible for establishing a 2-way conduit of communication with the public.
- **Environmental Technical Advisory Team (ETAT)** - federal and state agency and MPO representatives.



## Agency Agreements

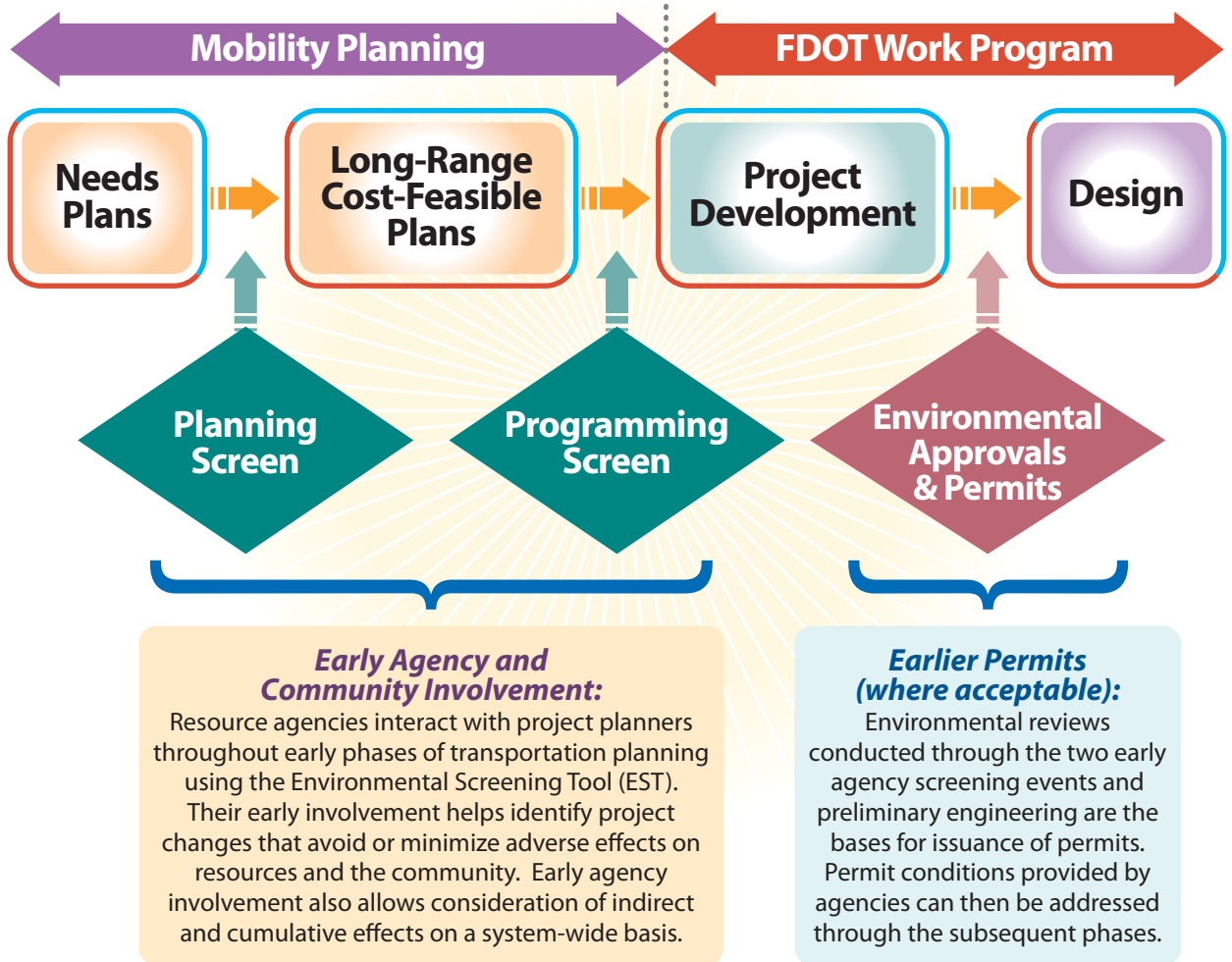
The **ETDM** Memorandum of Understanding (MOU) was signed by 23 agencies at the summit meeting on December 14, 2001. This agreement signified concurrence with the ETDM Process concept and commitment to continued development and implementation.



Implementation of the **ETDM** Process is supported by additional agreements with each agency:

- *Master Agreement* - documents agency acceptance of the **ETDM** Process, performance standards, dispute resolution process and statement of regulatory authority.
- *Agency Operating Agreement* - documents agency-specific requirements including review timeframes.
- *Funding Agreement* - documents interagency funding provided by FDOT to assist participation in the **ETDM** Process.

The ETDM Process is designed to provide resource agencies and the public access to project plans and information about potential effects on Florida's resources. The project degree of effect on resources is documented, and agencies prescribe the technical studies to be accomplished by FDOT during Project Development.



Each district's **ETAT** will initially comprise about 20 representatives from FDOT, FHWA, MPOs and state and federal resource agencies. **ETAT** members evaluate projects and communicate using the **Environmental Screening Tool**, supported by traditional meetings, calls and e-mails.

# ***ETDM Vision Statement***

(Developed by multiagency working group)

"It is our vision to improve transportation decision making in a way that protects our natural and human environmental resources. It is our goal that we, as environmental resource and transportation agencies, establish a systematic approach that integrates land use, social, economic, environmental, and transportation considerations. This approach will include the active participation of Federal, State and Local agencies, and the public. It will lead to decisions that provide the highest quality of life and an optimal level of mobility for the public we serve."

## ***The ETDM Story***

**FDOT** developed the **ETDM** Process in response to Congress' call to "streamline" the environmental review and permitting processes (Section 1309 of TEA-21).

The **ETDM** Process was developed over a 3-year period in collaboration with MPOs and federal and state resource agencies. FDOT's federal transportation partners included FHWA, FTA and the U.S. Coast Guard. The vision statement guided development of a comprehensive process that FDOT began implementing in the spring of 2003. Collaborating agencies signed the **ETDM** Memorandum of Understanding. Program implementation details and funding requirements are documented in Agency Operating and Funding Agreements.

## ***ETDM Benefits!***

Since 2004, over 300 projects have been screened using ETDM. State and regulatory agencies have seen the following benefits:

- Earlier recognition of the potential impacts on the natural, cultural and human environment and the associated costs
- More focused scopes of work for Project Development and Environment (PD&E) Studies
- Expedited reviews by multiple agencies
- Earlier agreement on elimination of unreasonable alternatives
- Shortened project delivery times
- Less costly environmental studies and documentation
- Better access to public information and agency review comments
- Enhanced coordination and communication between FDOT and resource agencies
- Reduction of problematic projects or alternatives in the planning phase
- Improved and earlier agency coordination and problem solving
- Improved dispute resolution process



This brochure was produced by the FDOT Environmental Management Office in association with URS Corporation.



An interactive Internet application providing efficient access to information describing a transportation project and the human environment and natural resources in proximity to the project.

## GIS Analysis

**MPOS**



FGDL

**EST Analyzes**

The **EST** automatically analyzes the proposed projects using prescribed comparison criteria (environmental resources, historical sites, etc.) developed by the **ETAT**.

GIS analysis results are stored in the interactive database as statistical summary reports that can be viewed along with corresponding resource maps.



Results Stored

## ETAT Review / Feedback

## Review Results

ETDM Coordinators notify ETAT members to begin review of project effects through the EST. The notice also begins the Advance Notification process which includes Federal Consistency Review by state agencies.

**ETAT** enters “**Degree of Effect**” and recommendations for avoidance and minimization of adverse effects. Federal consistency reviewers provide feedback on the project.

The public may review project data and can provide input to MPOs and to FDOT through alternative public involvement events (e.g., workshops, newsletters, public involvement mailings, etc.)

## Florida ETDM Process Summary Degree of Effect

## NA/ e Involvement

## Enhance

None

## Minimum

## Moderate

## Substantial

## Dispute

The **Degree of Effect** is color coded on the summary reports for easy reference.

The **ETDM Coordinators** compile the results of the **ETAT** review in a **Summary Report** containing key recommendations and conclusions for the effects identified by the **ETAT** and through community outreach activities. This will guide planners in staging transportation priorities and provide feedback to agencies and the public.

During the Programming Phase, the Florida State Clearinghouse reviews feedback from federal consistency reviewers and provides a determination of consistency with the Florida Coastal Management Program in the summary report. Upon completion of the Programming Phase, an Environmental Class of Action is made by the FDOT and, for projects involving a federal action, the lead Federal agency. The Class of Action establishes the level of environmental documentation required for the project and becomes part of the Final Programming Summary Report.