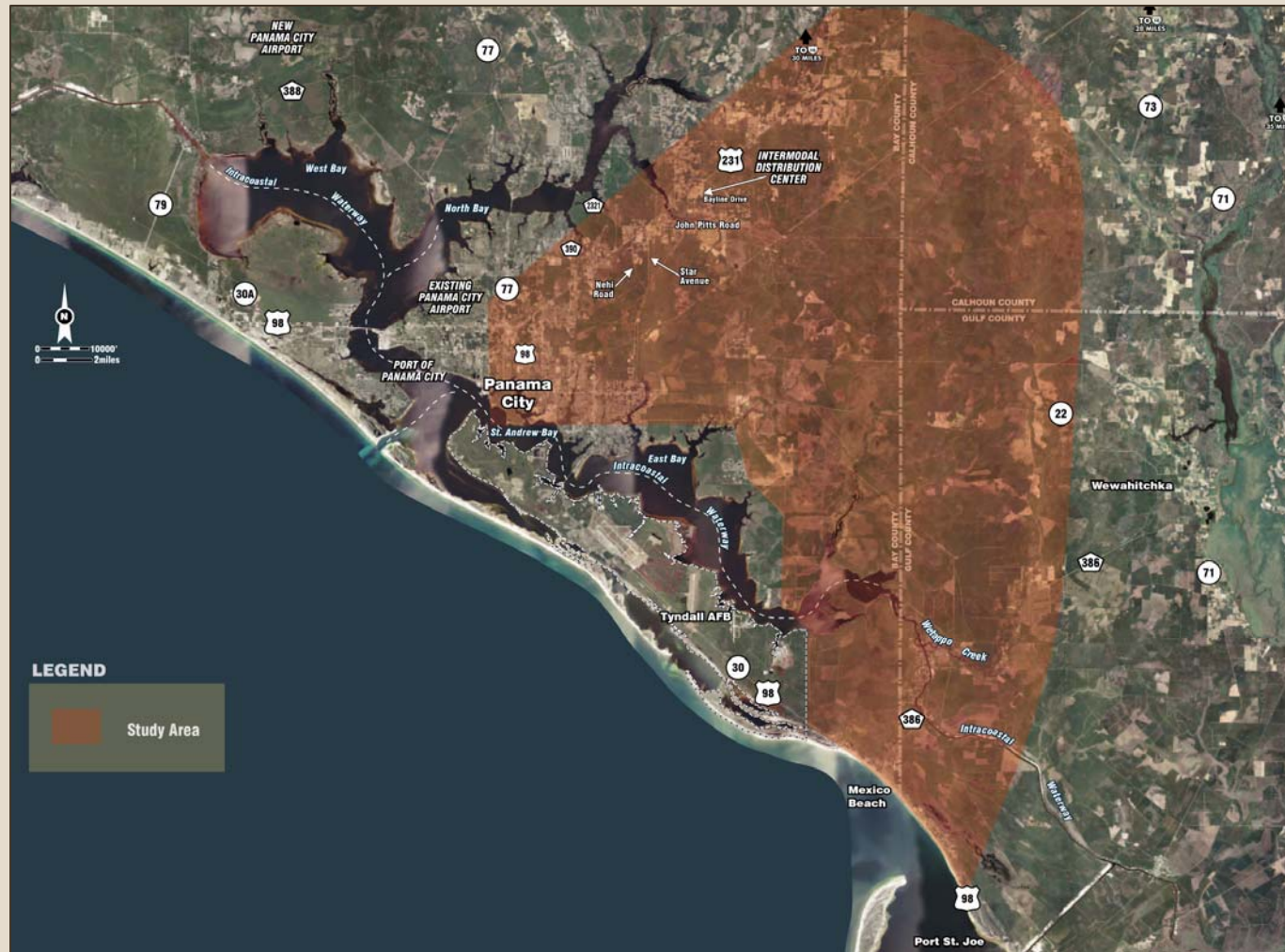


*Project Development and  
Environment (PD&E) Study*  
***GULF COAST PARKWAY***

# *Project's Purpose and Need*

- Reduce travel times for residents from south Bay and Gulf Counties to employment centers in Bay County
- Provide a more direct route between US 98 and new freight transfer facilities on US 231 within Bay County
- Improve access between enterprise zones along CR 386 and US 98 in Gulf County and US 231 in Bay County
- Provide a direct route for tourists traveling US 231 to reach vacation and recreation opportunities in south Gulf County
- Provide a more direct route from south Gulf County to the Panama City International Airport (both existing and proposed)
- Increase traffic capacity
- Improve security for the Tyndall Air Force Base by providing an alternative route to US 98
- Increase capacity for currently congested sections of US 98
- Provide alternatives to the existing emergency evacuation routes
- Identify a new corridor consistent with the adopted Bay County Long Range Transportation Plan; and the Bay and Gulf Counties Comprehensive Plans

# *Gulf Coast Parkway Study Area*

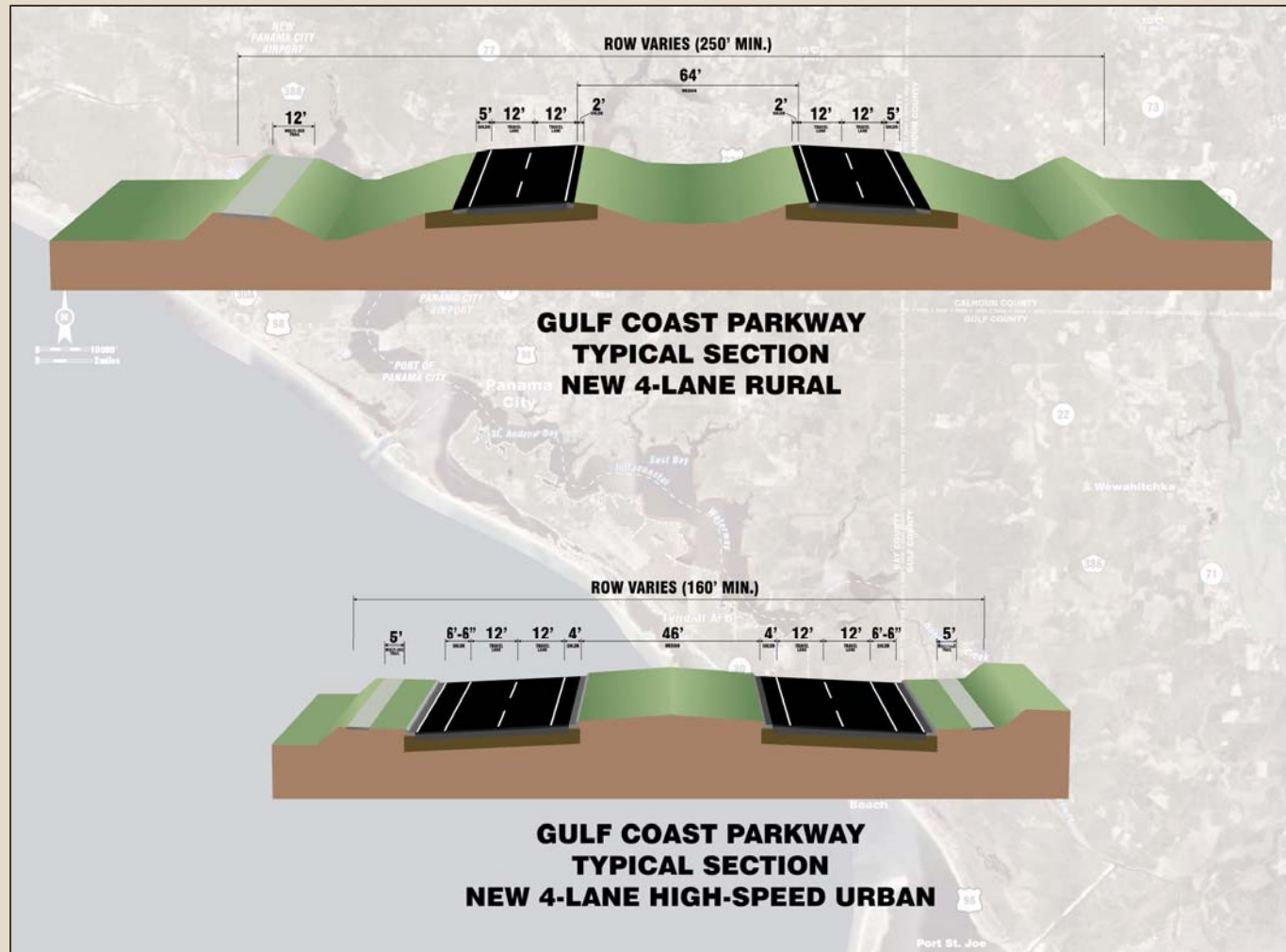


# PD&E Study – ETDM Alternative Corridors





# *Proposed Typical Sections*



# *Project Update*

- Opportunity Florida
- Viable Corridors
- Alternative Corridor Public Meetings
  - August 12 – Gulf County
  - August 21 – Bay County
- Public Opinion Survey

# Public Opinion Survey



## GULF COAST PARKWAY PUBLIC OPINION SURVEY

www.gulfcoastparkway.com



FPID No.: 410961-1-22-01

The Florida Department of Transportation (FDOT) is conducting a Project Development & Environment (PD&E) Study for a proposed new roadway (the Gulf Coast Parkway) that would connect US 98 in Gulf County with US 231 and US 98 (Tyndall Parkway) in Bay County. To ensure that FDOT understands your concerns, please complete the following survey. Providing information through this survey does not represent your endorsement of the project. All surveys must be mailed by August 31, 2008. Thank you for your participation.

To ensure the validity of this survey please provide your name and address below. This contact information will only be used by project staff to update our project mailing list.

Name: \_\_\_\_\_ Address: \_\_\_\_\_  
City: \_\_\_\_\_ State: \_\_\_\_\_ Zip Code: \_\_\_\_\_  
E-mail (optional): \_\_\_\_\_

### PLEASE PRINT OR CIRCLE YOUR RESPONSE

In which county do you live:	<i>Gulf</i>	<i>Bay</i>	<i>Other:</i> _____
How far do you commute to work (one-way)?	<i>1-20 miles</i>	<i>21-30 miles</i>	<i>30+ miles</i>
How far do you commute to shopping?	<i>1-20 miles</i>	<i>21-30 miles</i>	<i>30+ miles</i>
On average, how often each month do you travel to Gulf / Bay County?	<i>Less than 5 trips</i>	<i>5-10 trips</i>	<i>10+ trips</i>
Would you travel to Gulf / Bay County more often if there was a more direct route?	<i>Yes</i>	<i>No</i>	
If you own a business, do you think the proposed project would be good or bad for your business?	<i>Good for my business</i>	<i>Bad for my business</i>	<i>Don't know</i>
If you traveled any of the alternative corridors north from US 98 to US 231, where would you most likely be headed?	<i>To Panama City</i>	<i>North of Panama City</i>	<i>Other</i>
Overall, are you in favor of this project?	<i>Yes</i>	<i>No</i>	<i>Undecided</i>

From the list below, circle your three most important issues regarding the project.

<i>Roadway Congestion</i>	<i>Economic Improvement</i>	<i>Construction Schedule</i>
<i>Traffic Noise</i>	<i>Waterway Navigation</i>	<i>Opportunities for Input on the Project</i>
<i>Roadway Safety</i>	<i>Wetlands</i>	<i>Project Costs</i>
<i>Hurricane / Emergency</i>	<i>Environment</i>	<i>Other (please specify): _____</i>
<i>Potential Bridges</i>	<i>Wildlife and Habitat</i>	
<i>Residential / Business Relocations</i>	<i>Induced Growth</i>	

How would you prefer to get information on the Gulf Coast Parkway PD&E Study in the future:

<i>Public Meetings</i>	<i>Mailings and Newsletters</i>	<i>Small Group Meetings</i>
<i>Talking directly with a Project Team Member</i>	<i>Web Page (www.gulfcoastparkway.com)</i>	

Please choose your top 3 alternative corridors:

*7 8 9 10 11 12 13 14 15 16 17 18 None*

Why do you consider these 3 corridors the best choices? \_\_\_\_\_

\_\_\_\_\_  
\_\_\_\_\_

## Thank you!

Please fold your survey on the dotted line on the back, seal with the enclosed sticker, and place in the mail.

# *Public Opinion Survey Results*

- Total of 269 Questionnaires were returned
- Project Received XX% approval
- Corridor Preferences (Top 3)
  - Corridor 7 – 117 votes
  - Corridor 17 – 101 votes
  - Corridor 15 – 79 votes
- Reasons for Corridor Selection (Top 3)
  - Most direct route from Gulf to Bay County
  - Congestion Relief/Avoidance
  - Hurricane/Emergency Evacuation



# *Corridor Alternative Evaluation Summary Report (CAESR)*

- Summarized the findings of the Corridor Evaluation Process
  - Purpose and Need
  - Corridor Social and Natural Environmental Impacts
  - Public Opinion
  - Cost
- CAESR Submitted for FHWA Review
- ETAT Review

# *Dispute Resolution and Issue Action Plans*

- Dispute Resolution Degree of Effect Identified for:
  - Wetlands
  - Wildlife & Habitat
  - Coastal & Marine
  - Indirect and Cumulative Effects
- Issue Action Plans established on August 28<sup>th</sup> 2007
- Living Documents

# *Indirect and Cumulative Effects*

- ICE Process

- Identify Resources
- Define Boundaries
- Inventory Features
- Identify Project Impact-Causing Activities
- Determine Significance of the Potential Indirect and Cumulative Effects
- Analyze Indirect Effects & Evaluate Results
- Determine Strategies for Avoidance, Minimization, and Mitigation

## *ETAT Coordination*

- Re-establish Regular Teleconference Calls
- Meeting with Resource Agencies for continued follow through on Issue Action Plans
- Indirect and Cumulative Effects Analysis

# *Project Milestones*

- Alternative Alignments Analysis
- ICE Coordination
- Alternative Alignments Public Meetings
- Draft EIS and Technical Documents
- Public Hearing
- Final EIS