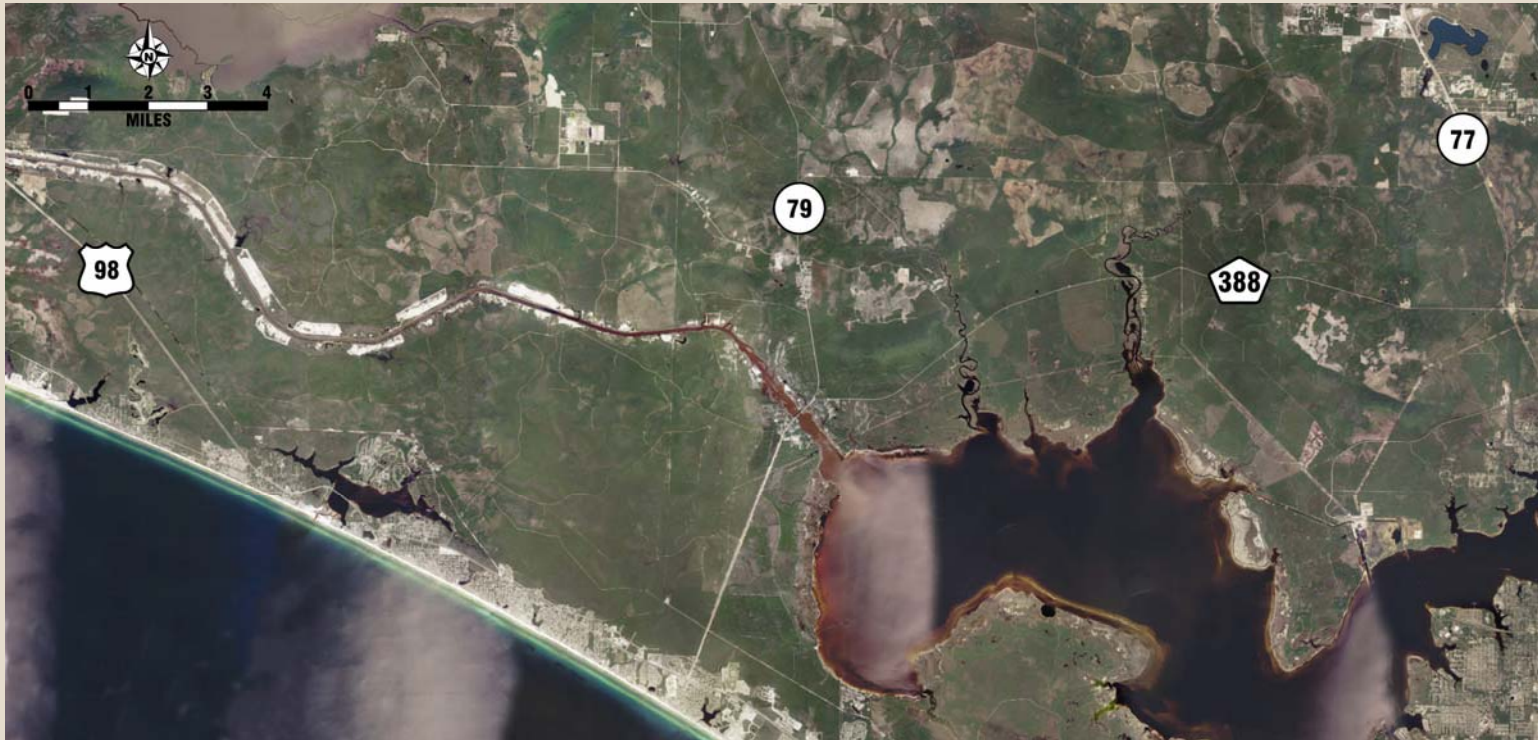




*Project Development and
Environment (PD&E) Study*
***PROPOSED CR 388
EXTENSION***

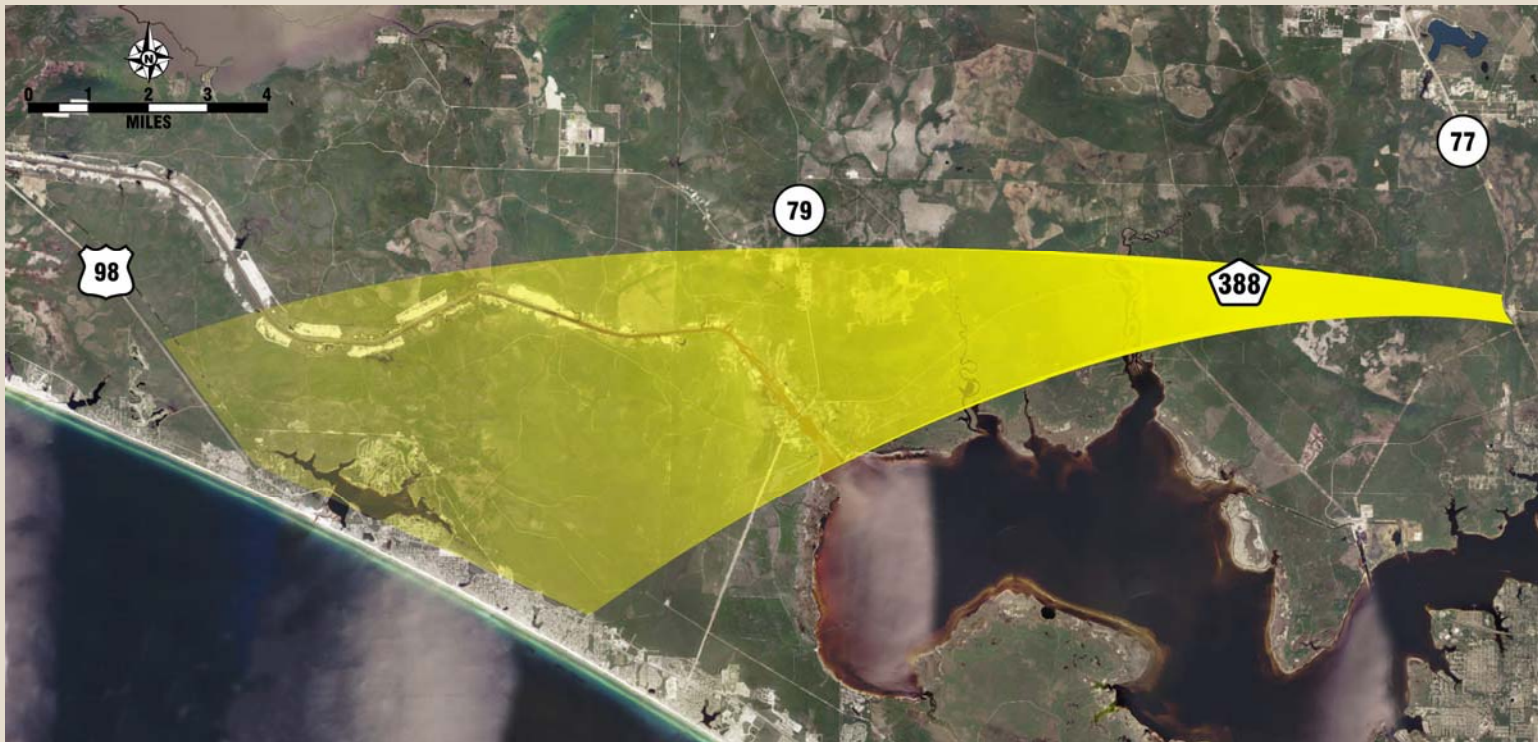
Project Description

- A New 4-Lane Road
- Approximately 24 miles in length
- Segment 1: US 98 (SR 30A) west of the Phillips Inlet to SR 79 in the vicinity of CR 388
- Segment 2: CR 388 from SR 79 to SR 77, with considerations for the realignment of the intersections at SR 79 and SR 77.



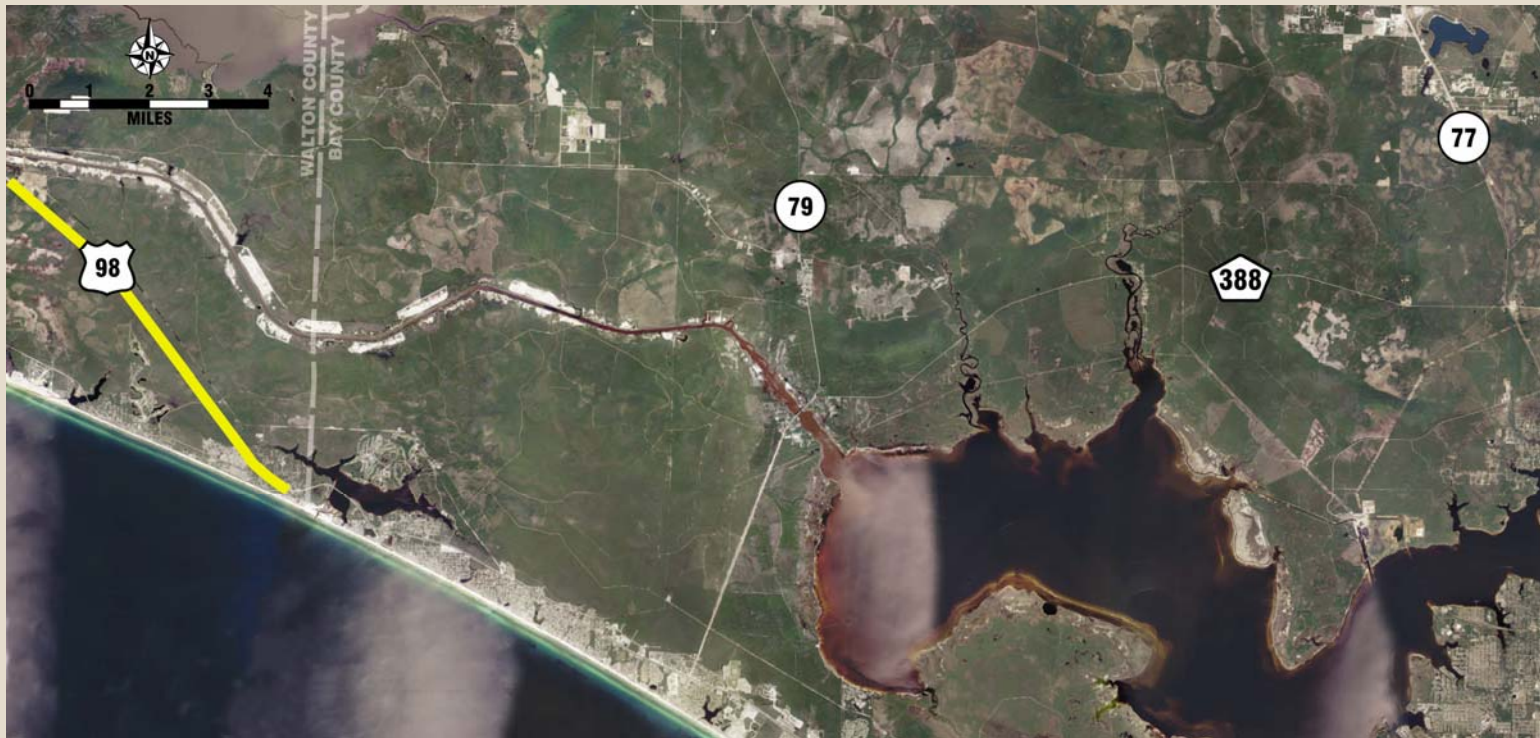
Project Description

- A New 4-Lane Road
- Approximately 24 miles in length
- Segment 1: US 98 (SR 30A) west of the Phillips Inlet to SR 79 in the vicinity of CR 388
- Segment 2: CR 388 from SR 79 to SR 77, with considerations for the realignment of the intersections at SR 79 and SR 77.



Project Description

- A New 4-Lane Road
- Approximately 24 miles in length
- Segment 1: US 98 (SR 30A) west of the Phillips Inlet to SR 79 in the vicinity of CR 388
- Segment 2: CR 388 from SR 79 to SR 77, with considerations for the realignment of the intersections at SR 79 and SR 77.



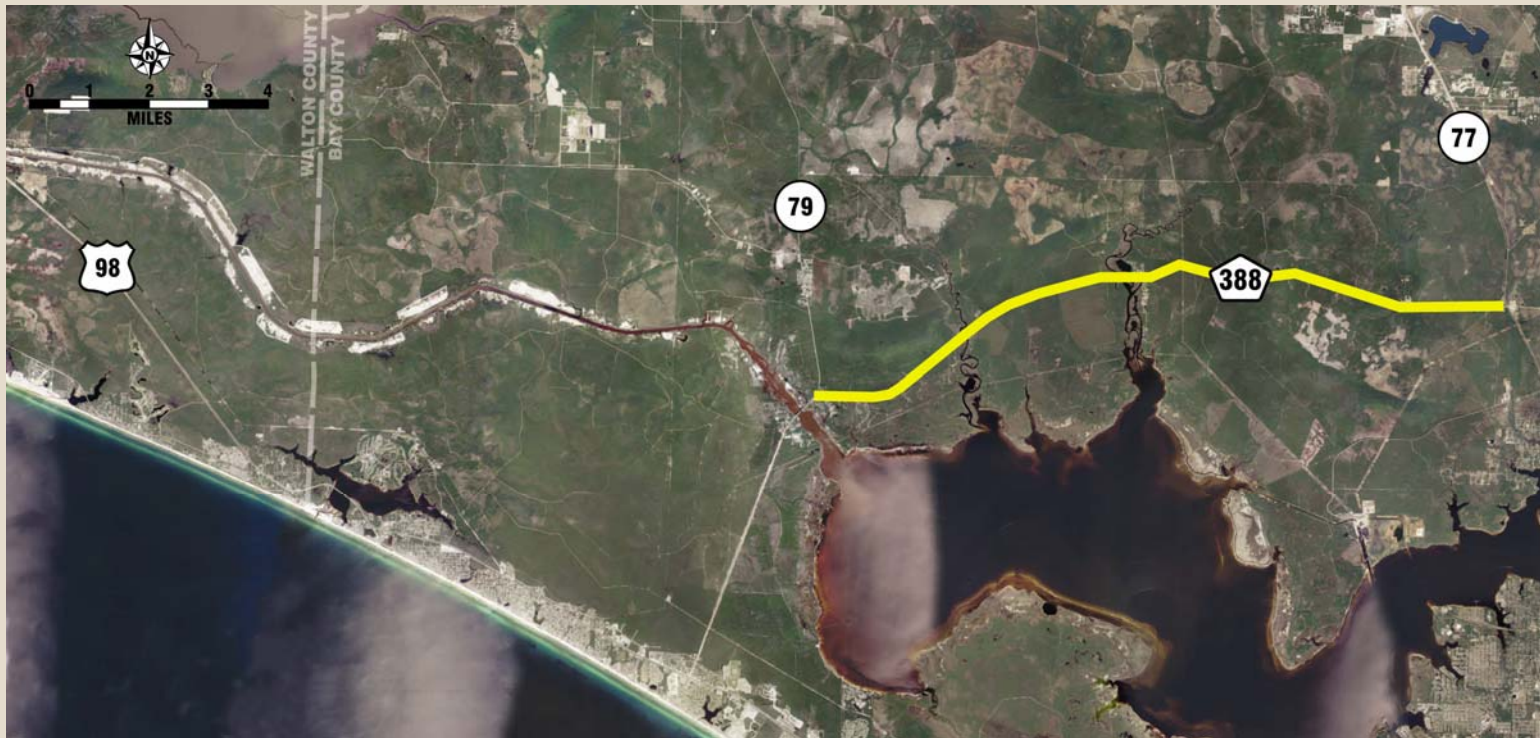
Project Description

- A New 4-Lane Road
- Approximately 24 miles in length
- Segment 1: US 98 (SR 30A) west of the Phillips Inlet to SR 79 in the vicinity of CR 388
- Segment 2: CR 388 from SR 79 to SR 77, with considerations for the realignment of the intersections at SR 79 and SR 77.



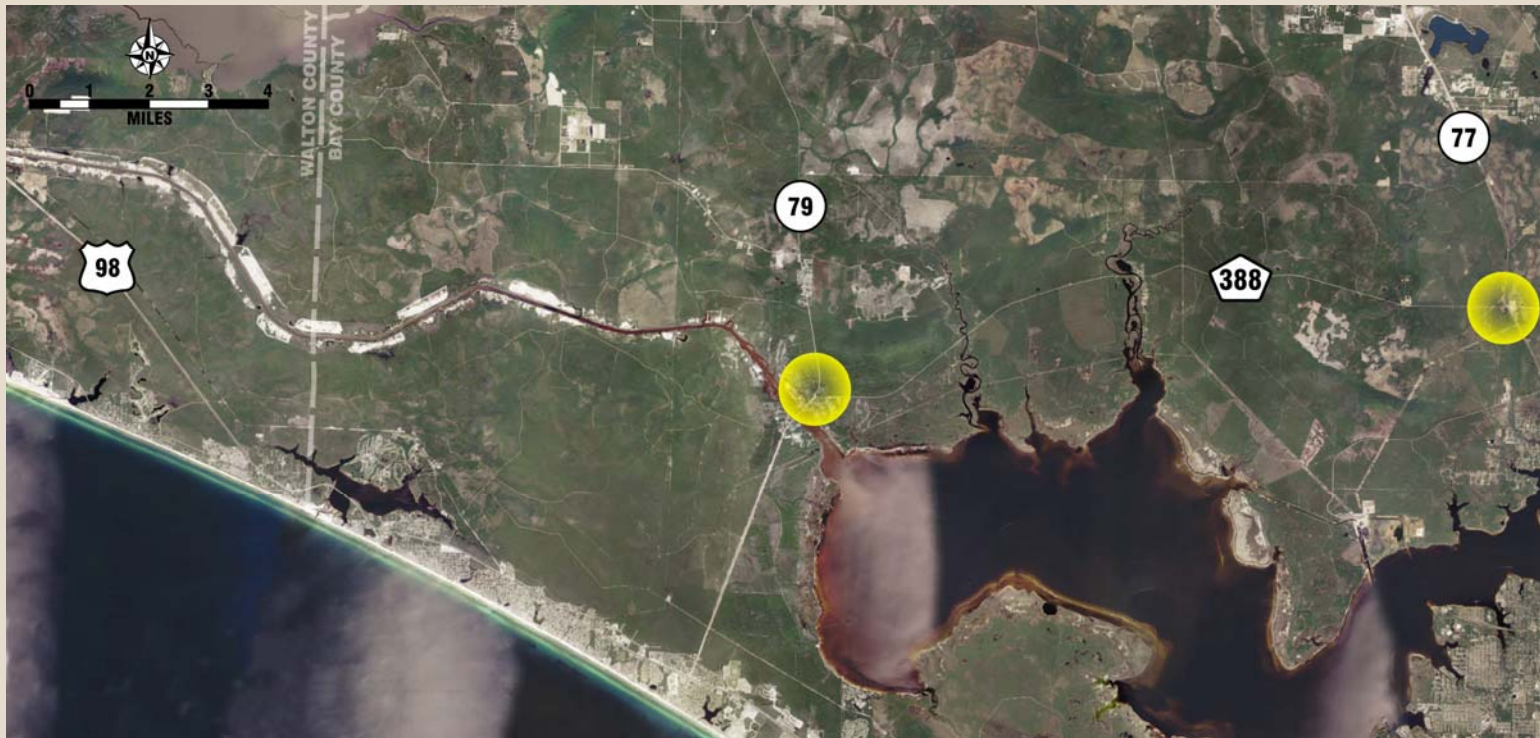
Project Description

- A New 4-Lane Road
- Approximately 24 miles in length
- Segment 1: US 98 (SR 30A) west of the Phillips Inlet to SR 79 in the vicinity of CR 388
- Segment 2: CR 388 from SR 79 to SR 77, with considerations for the realignment of the intersections at SR 79 and SR 77.



Project Description

- A New 4-Lane Road
- Approximately 24 miles in length
- Segment 1: US 98 (SR 30A) west of the Phillips Inlet to SR 79 in the vicinity of CR 388
- Segment 2: CR 388 from SR 79 to SR 77, with considerations for the realignment of the intersections at SR 79 and SR 77.

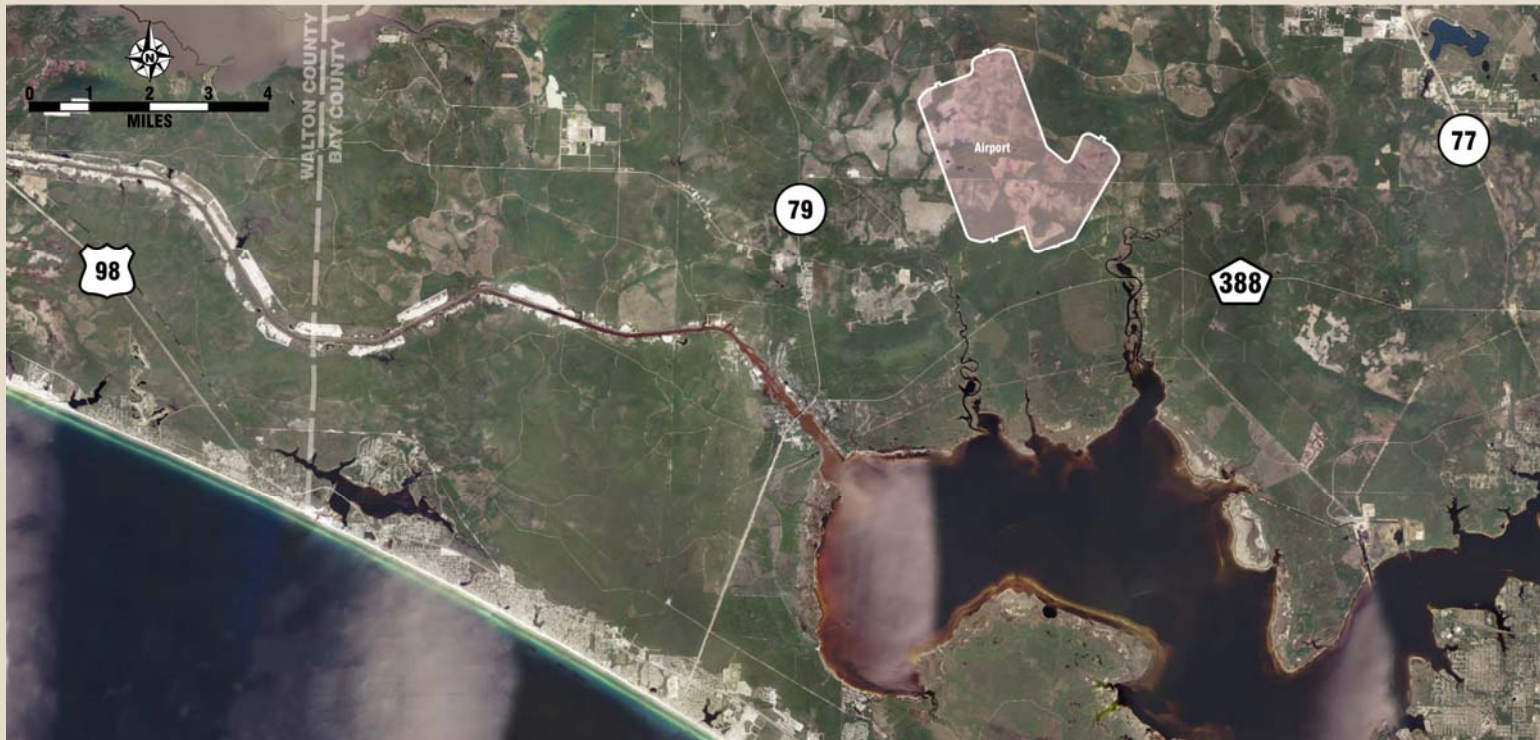


Project Purpose

- Improved Regional Connectivity
- Strategic Intermodal System
- Improved Safety
- Hurricane/Emergency Evacuation
- Future Plan Consistency

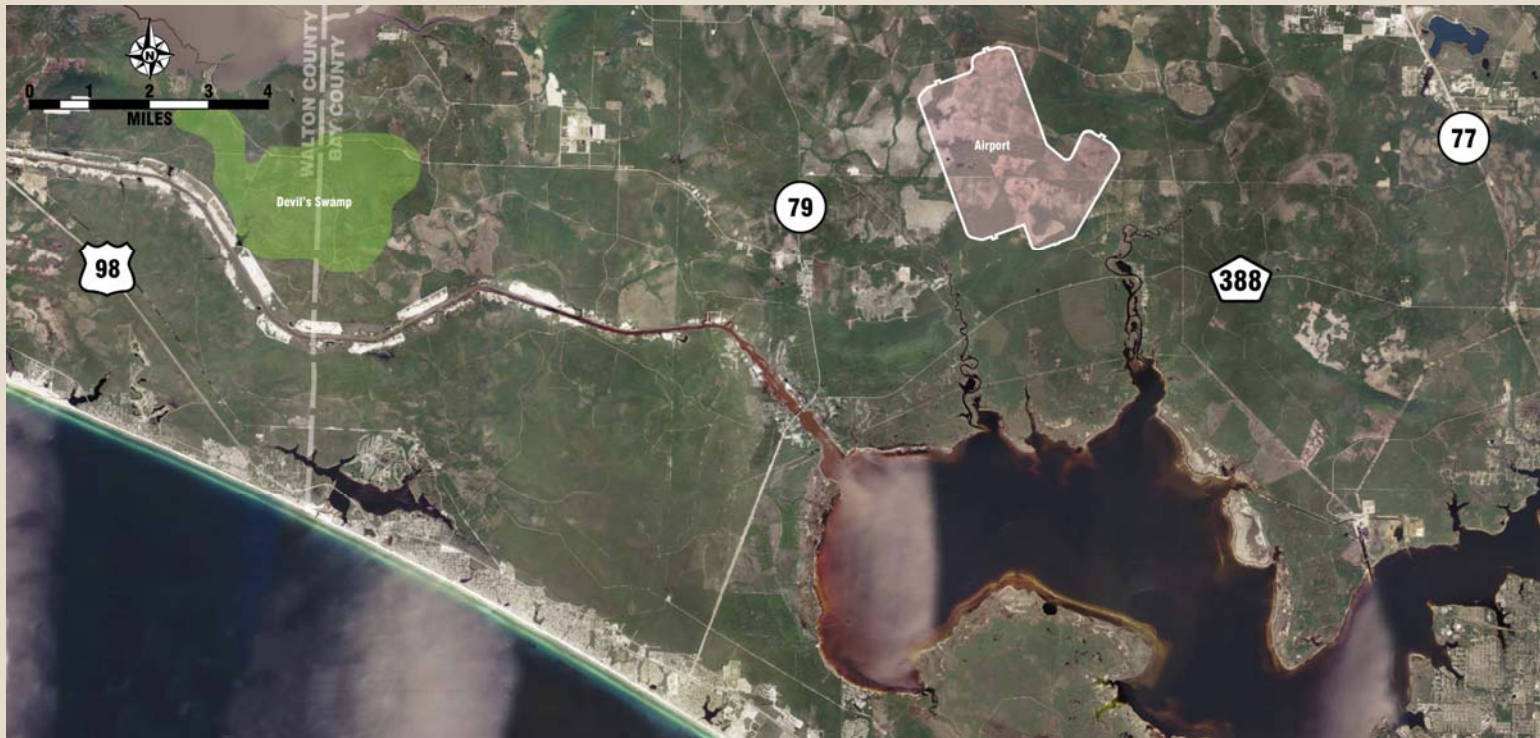
Project Proximity

- Airport
- Devil's Swamp
- Intercoastal Waterway
- Crooked Creek & Burnt Mill Creek
- Existing and Approved Planned Developments
- West Bay Sector Plan



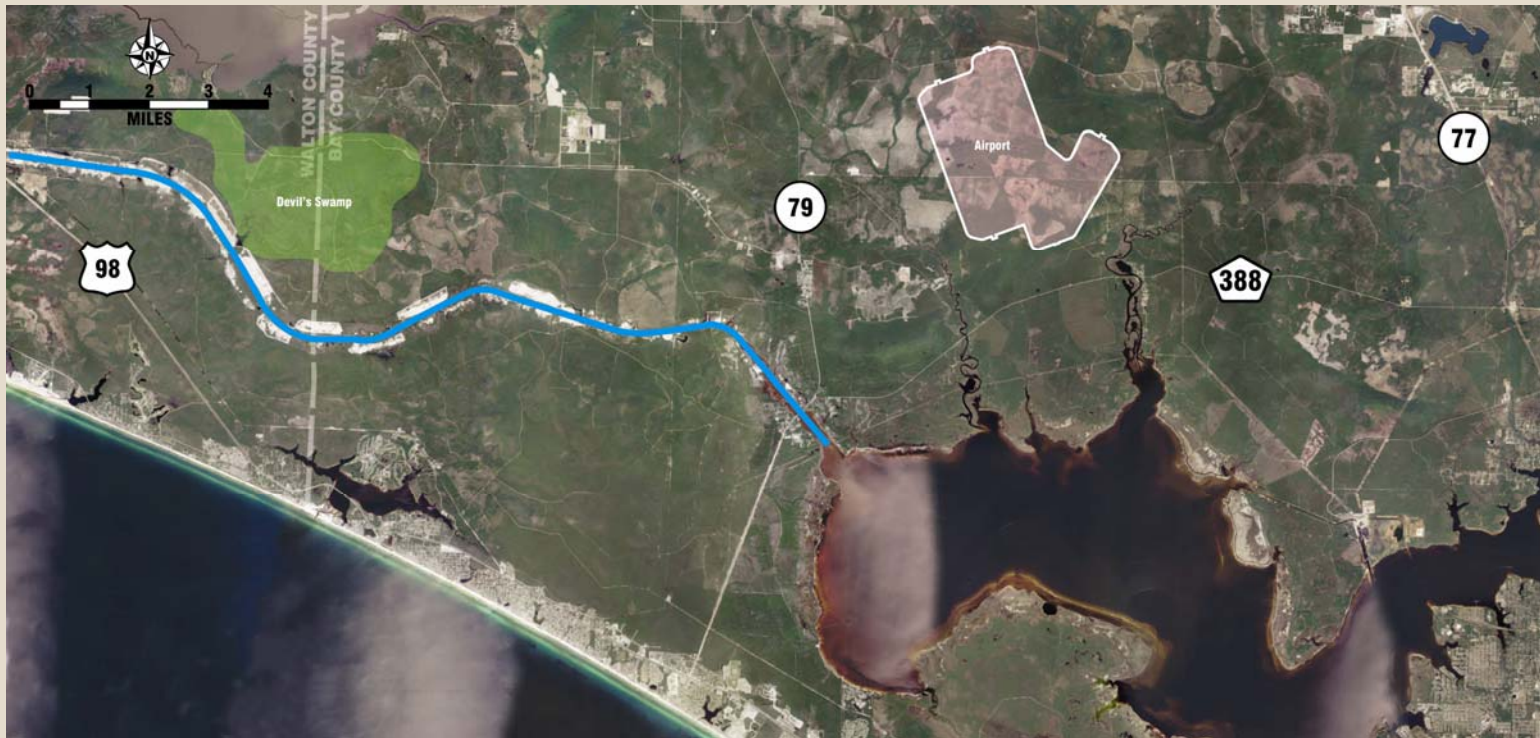
Project Proximity

- Airport
- Devil's Swamp
- Intercoastal Waterway
- Crooked Creek & Burnt Mill Creek
- Existing and Approved Planned Developments
- West Bay Sector Plan



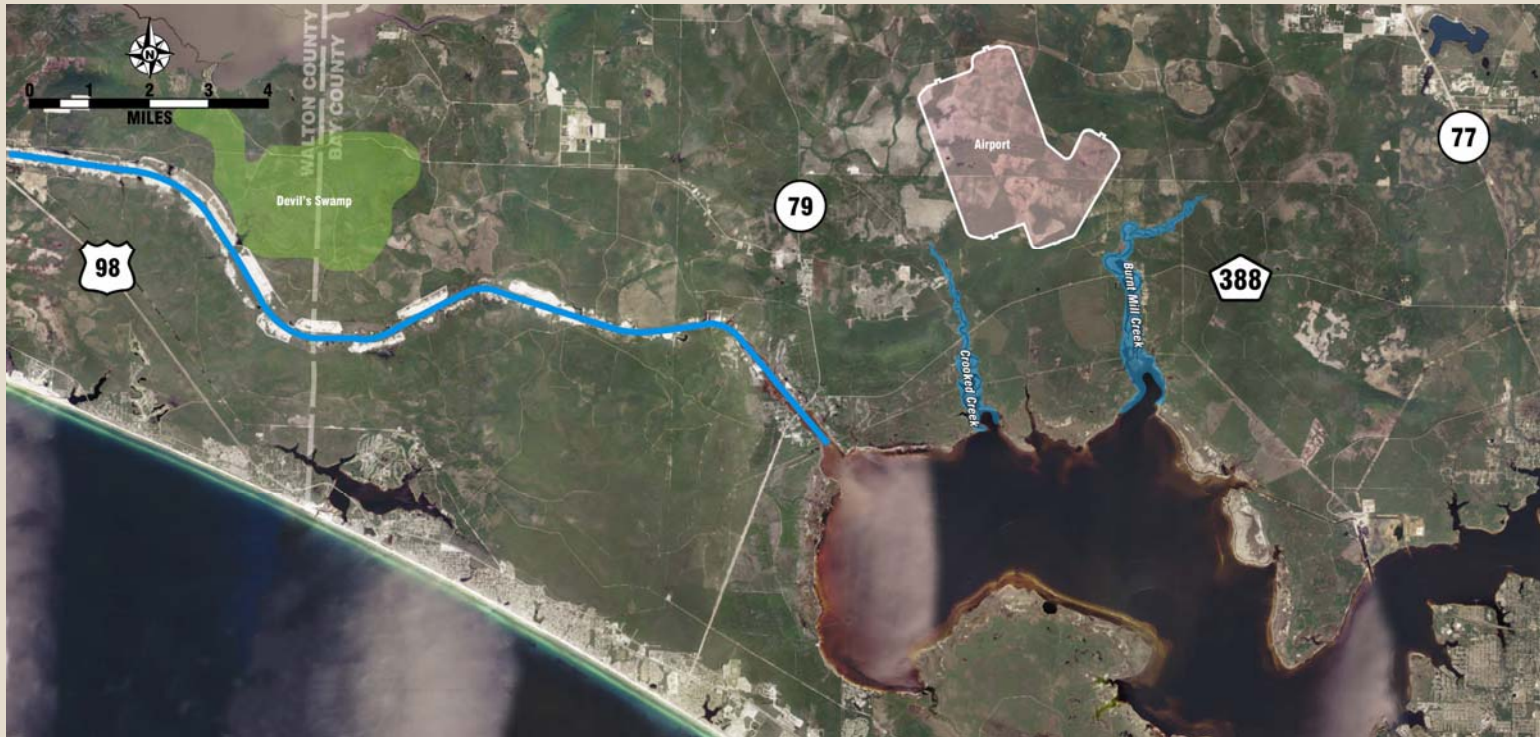
Project Proximity

- Airport
- Devil's Swamp
- Intercoastal Waterway
- Crooked Creek & Burnt Mill Creek
- Existing and Approved Planned Developments
- West Bay Sector Plan



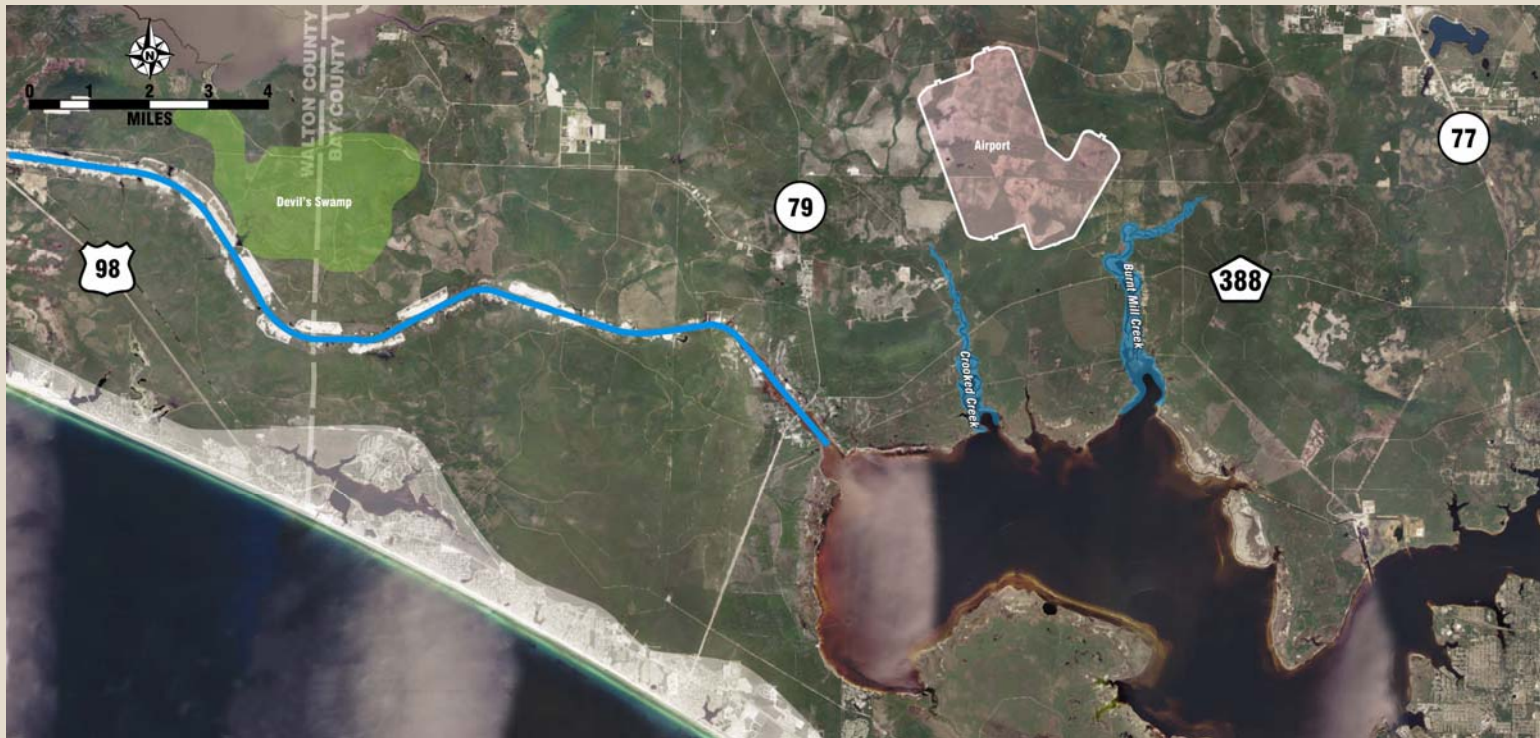
Project Proximity

- Airport
- Devil's Swamp
- Intercoastal Waterway
- Crooked Creek & Burnt Mill Creek
- Existing and Approved Planned Developments
- West Bay Sector Plan



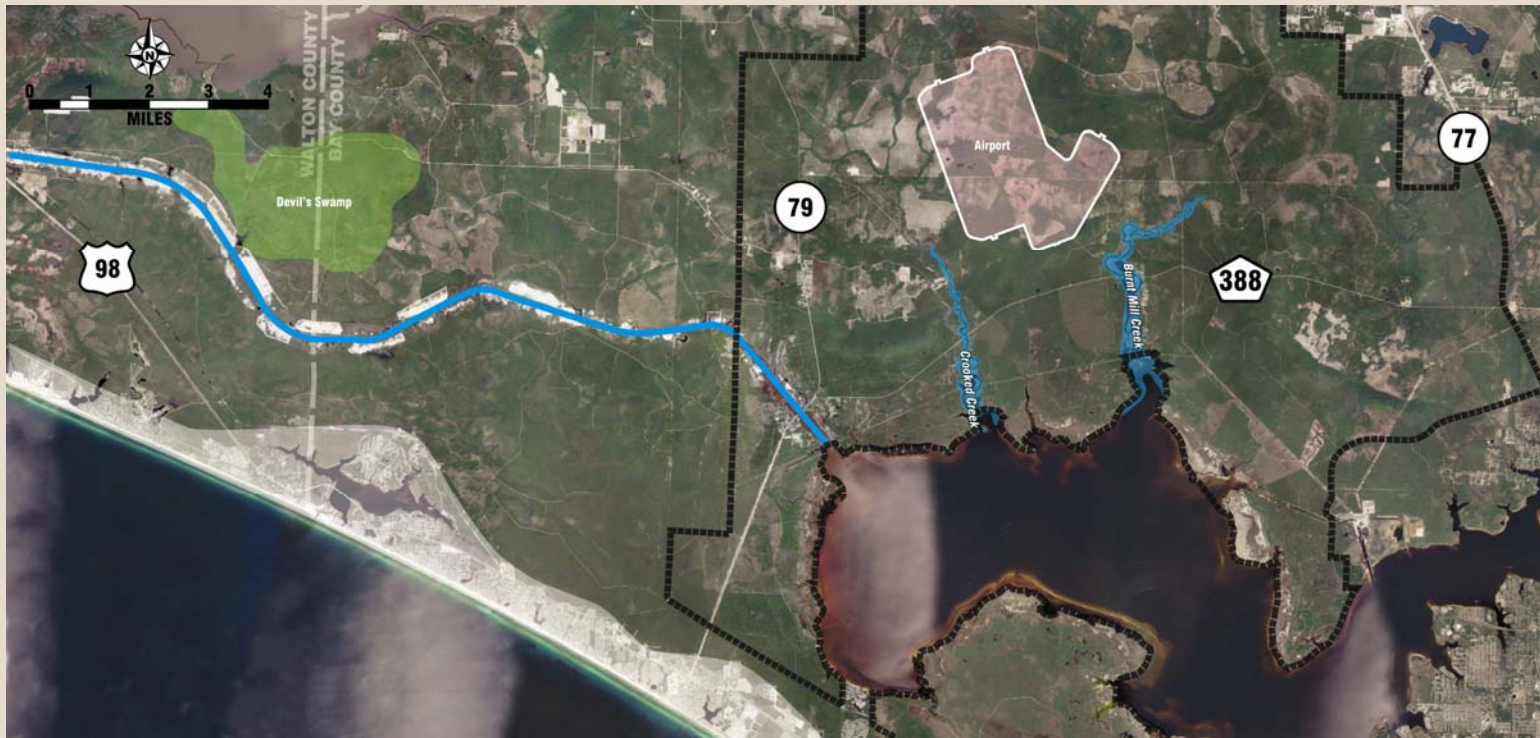
Project Proximity

- Airport
- Devil's Swamp
- Intercoastal Waterway
- Crooked Creek & Burnt Mill Creek
- Existing and Approved Planned Developments
- West Bay Sector Plan



Project Proximity

- Airport
- Devil's Swamp
- Intercoastal Waterway
- Crooked Creek & Burnt Mill Creek
- West Bay Sector Plan
- Existing and Approved Planned Developments



Project Constraints

- Wetlands (Flatwood Salamander)
- Mitigation Banks
- Conservation Areas
- Safety
- Endangered Species
- Comprehensive Plans Consistency



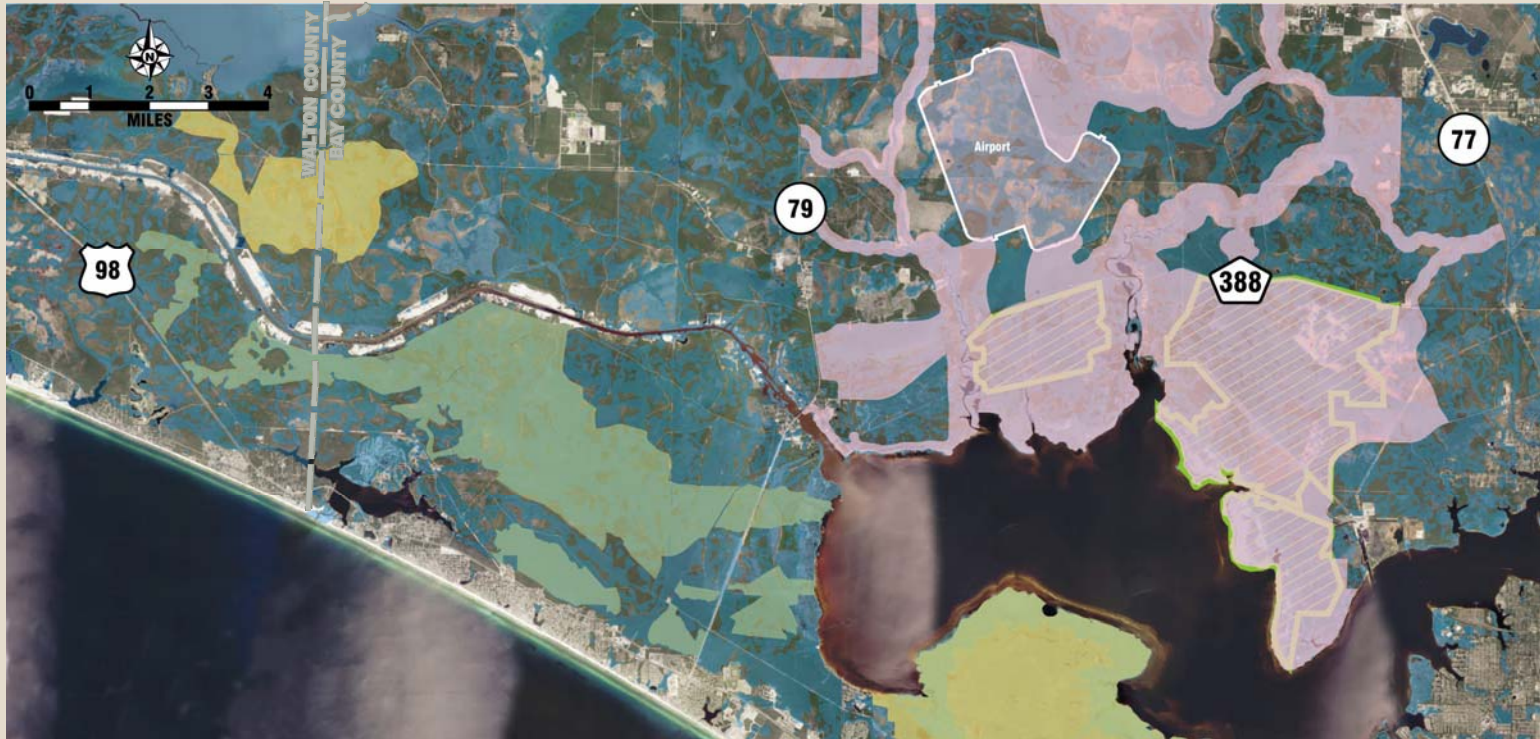
Project Constraints

- Wetlands (Flatwood Salamander)
- Mitigation Banks
- Conservation Areas
- Safety
- Endangered Species
- Comprehensive Plans Consistency



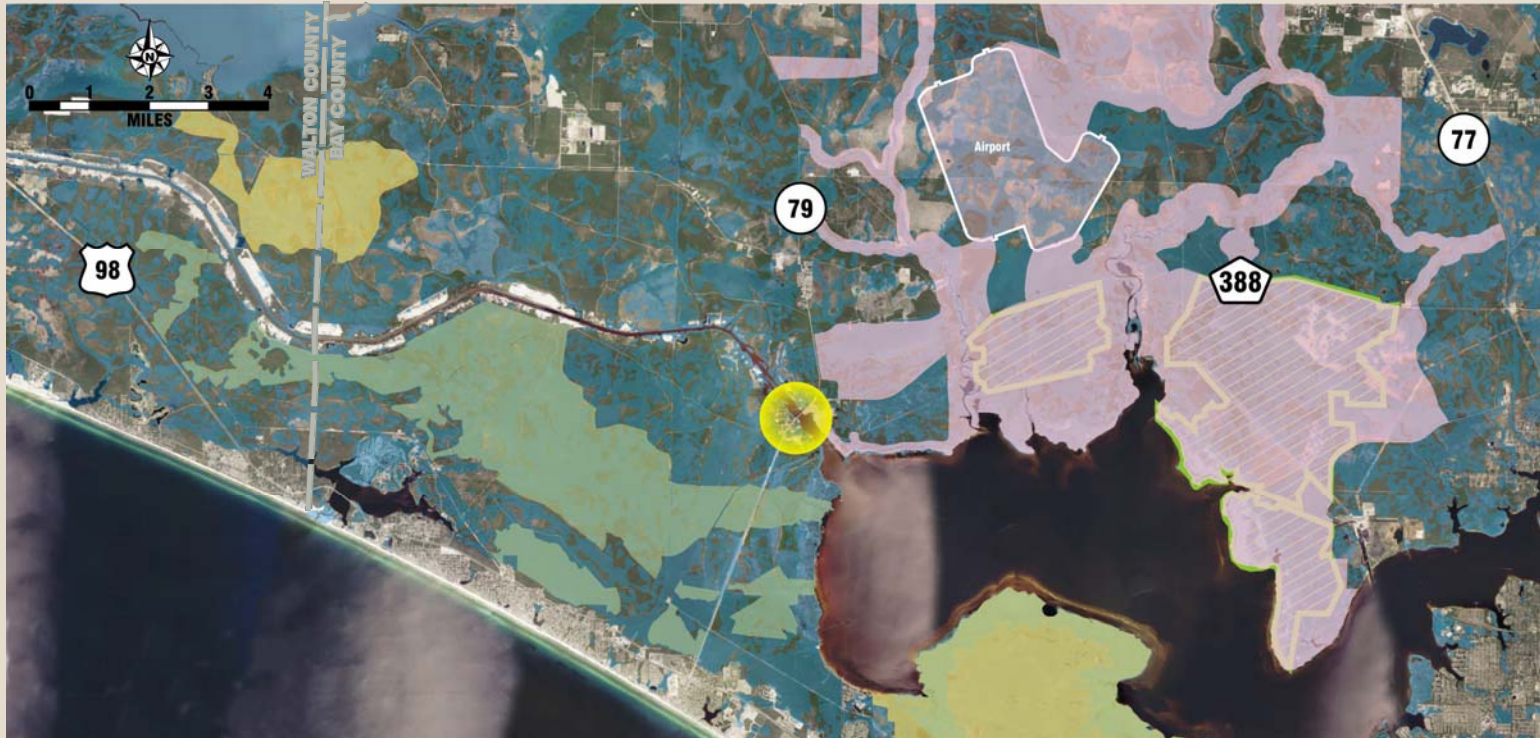
Project Constraints

- Wetlands (Flatwood Salamander)
- Mitigation Banks
- Conservation Areas
- Safety
- Endangered Species
- Comprehensive Plans Consistency



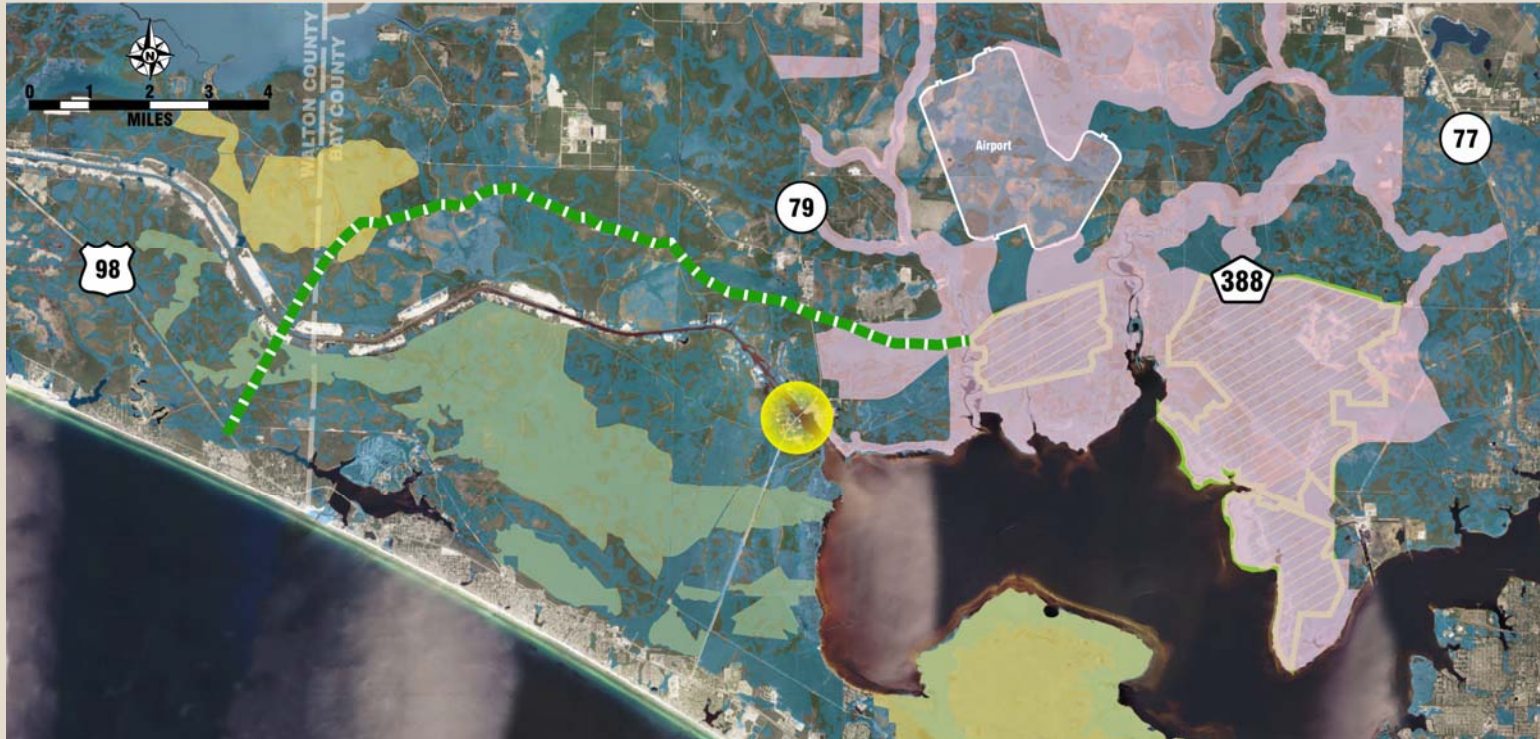
Project Constraints

- Wetlands (Flatwood Salamander)
- Mitigation Banks
- Conservation Areas
- Safety
- Endangered Species
- Comprehensive Plans Consistency

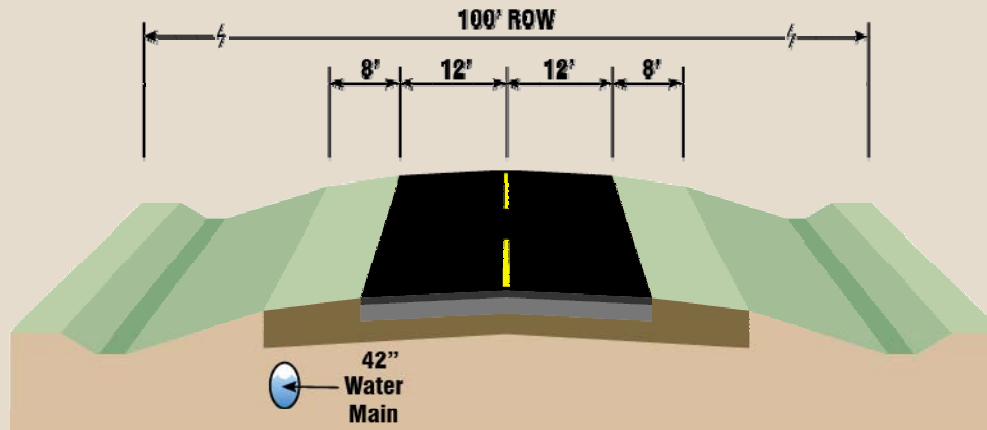


Project Constraints

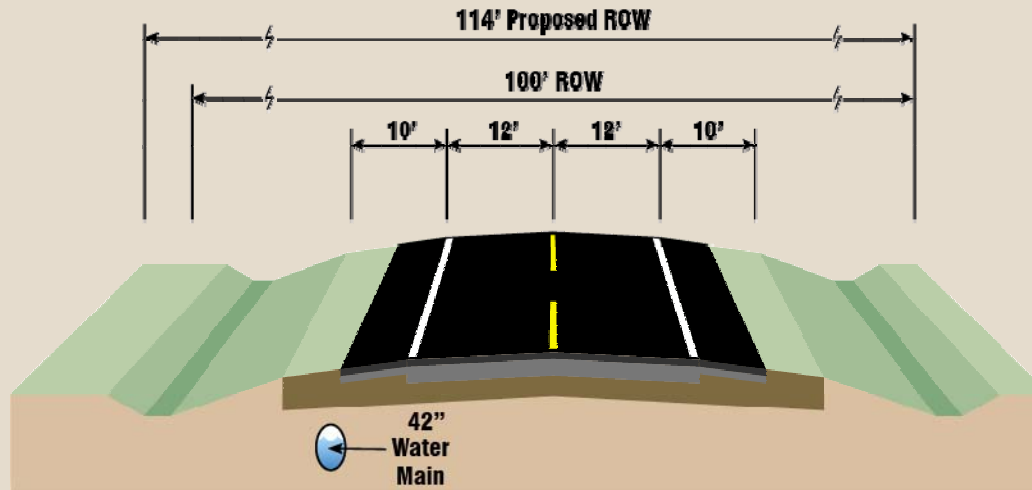
- Wetlands (Flatwood Salamander)
- Mitigation Banks
- Conservation Areas
- Safety
- Endangered Species
- Comprehensive Plans Consistency



Typical Sections

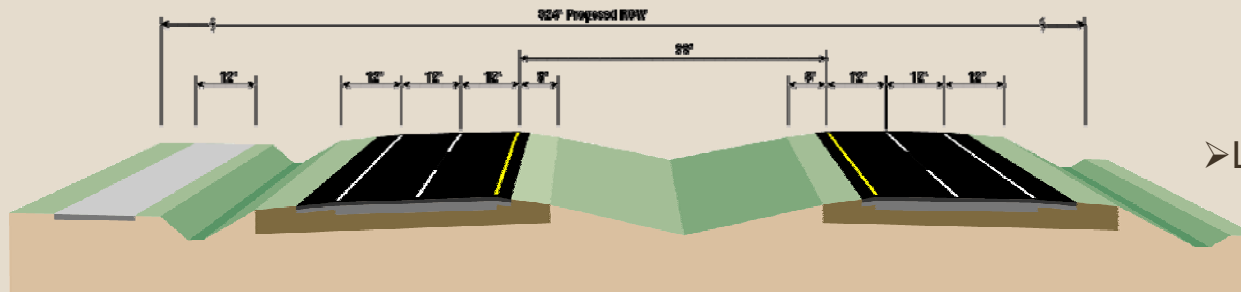


➤ Existing Typical Section

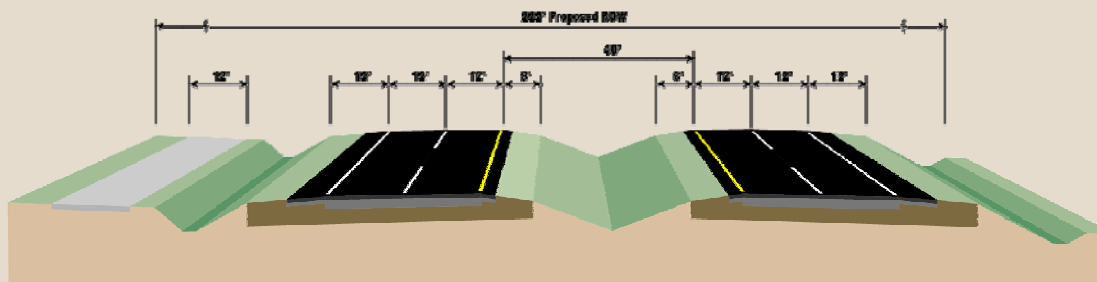


➤ Interim Typical Section

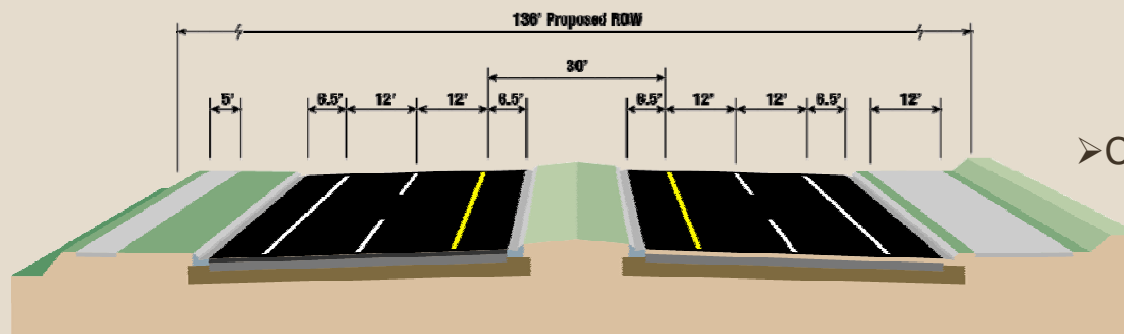
Typical Sections



➤ Limited Access - Rural

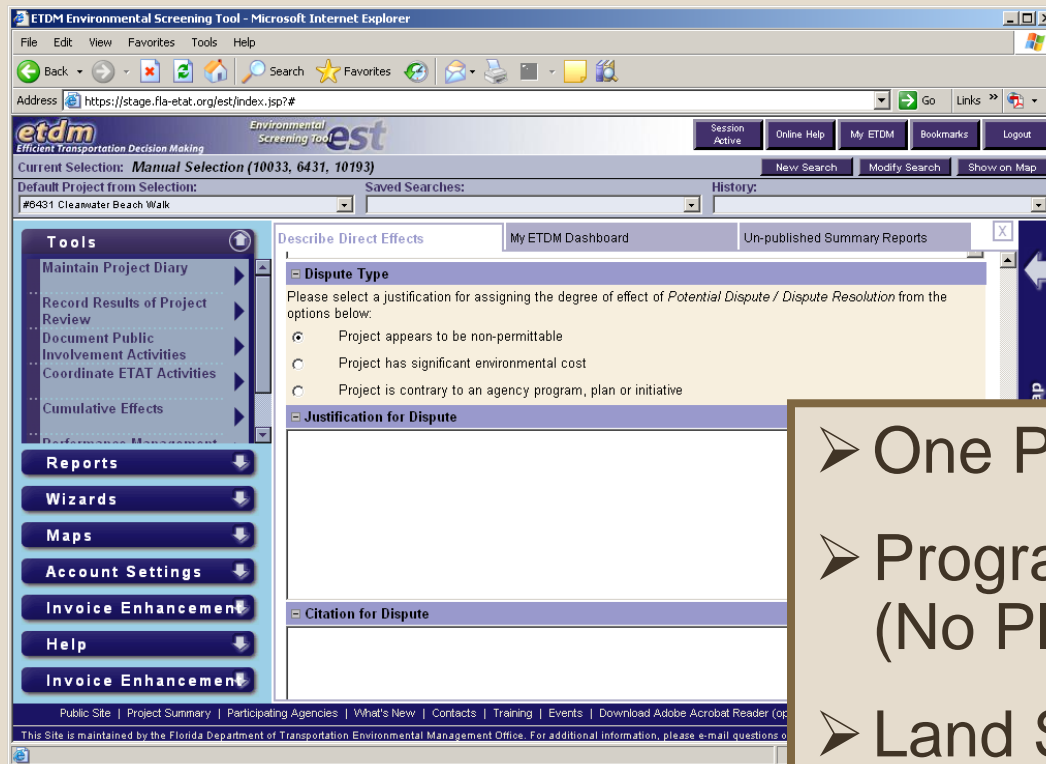


➤ Controlled Access - Rural



➤ Controlled Access - Urban

ETDM

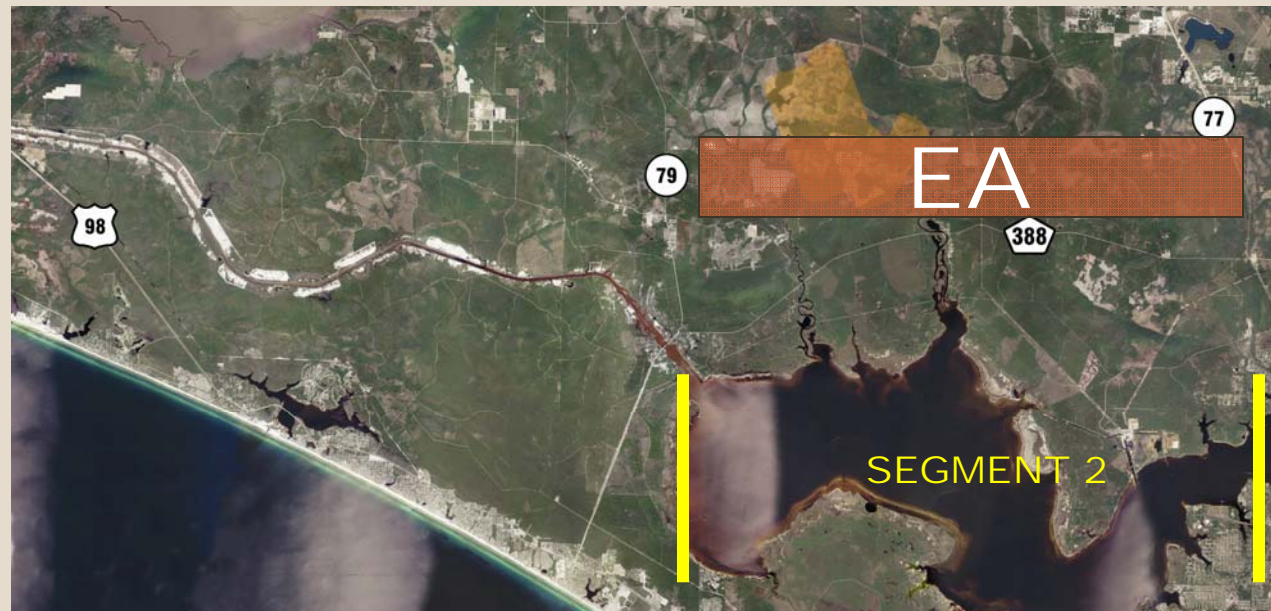


- One Project
- Programming Screen (No Planning Screen)
- Land Suitability Mapping Data
- Indirect & Cumulative Effects Analyses

Project Schedule

➤ EA: 24 months

➤ EIS: 48 months



Wetlands

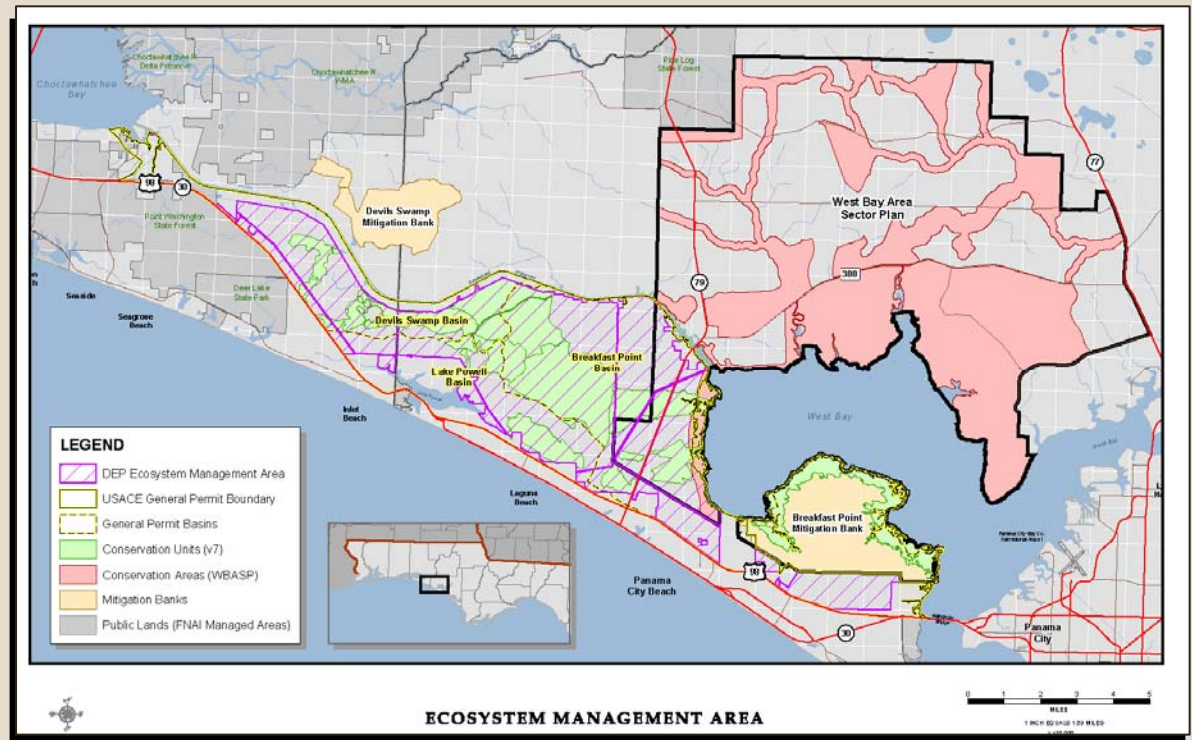
- Priority Environmental Consideration
- ~50% of Study Area in Wetlands (Mosaic)
- Variety of Wetland Types & Quality
- Minimization a High Priority
- Indirect and Cumulative Impacts



Conservation Areas

➤ Variety of Types

- Ecosystem Management Agreement (EMA)
- West Bay Sector Plan
- Regional General Permit (RGP)
- State Lands



Protected Species

- Flatwoods Salamander
- Gopher Tortoise
- Telephus Spurge
- Eastern Indigo Snake
- Bald Eagle
- Florida Black Bear

