

## DRAFT PROPOSAL FOR ENVIRONMENTAL SCREENING TOOL CUMULATIVE EFFECTS ANALYSES

### Red-cockaded woodpecker (RCW)

The Service's Vero Beach Field Office has defined a consultation area for the RCW that includes portions of the following counties in central and south Florida: Polk, Osceola, Brevard, Indian River, St. Lucie, Martin, Palm Beach, Glades, Charlotte, Lee, Collier, and Monroe (Figure 1.). I suggest that the RCW cumulative effects assessment be conducted for each of these counties. The assessment area for each county would only include lands within the Service's RCW consultation area (the Service's Jacksonville and Panama City Field Office will have to be contacted to identify additional RCW assessment areas in north Florida and the panhandle). The RCW cumulative effects analysis would consist of tallying the total acreage of the following habitat types in the assessment area:

#### FLUCCS Codes

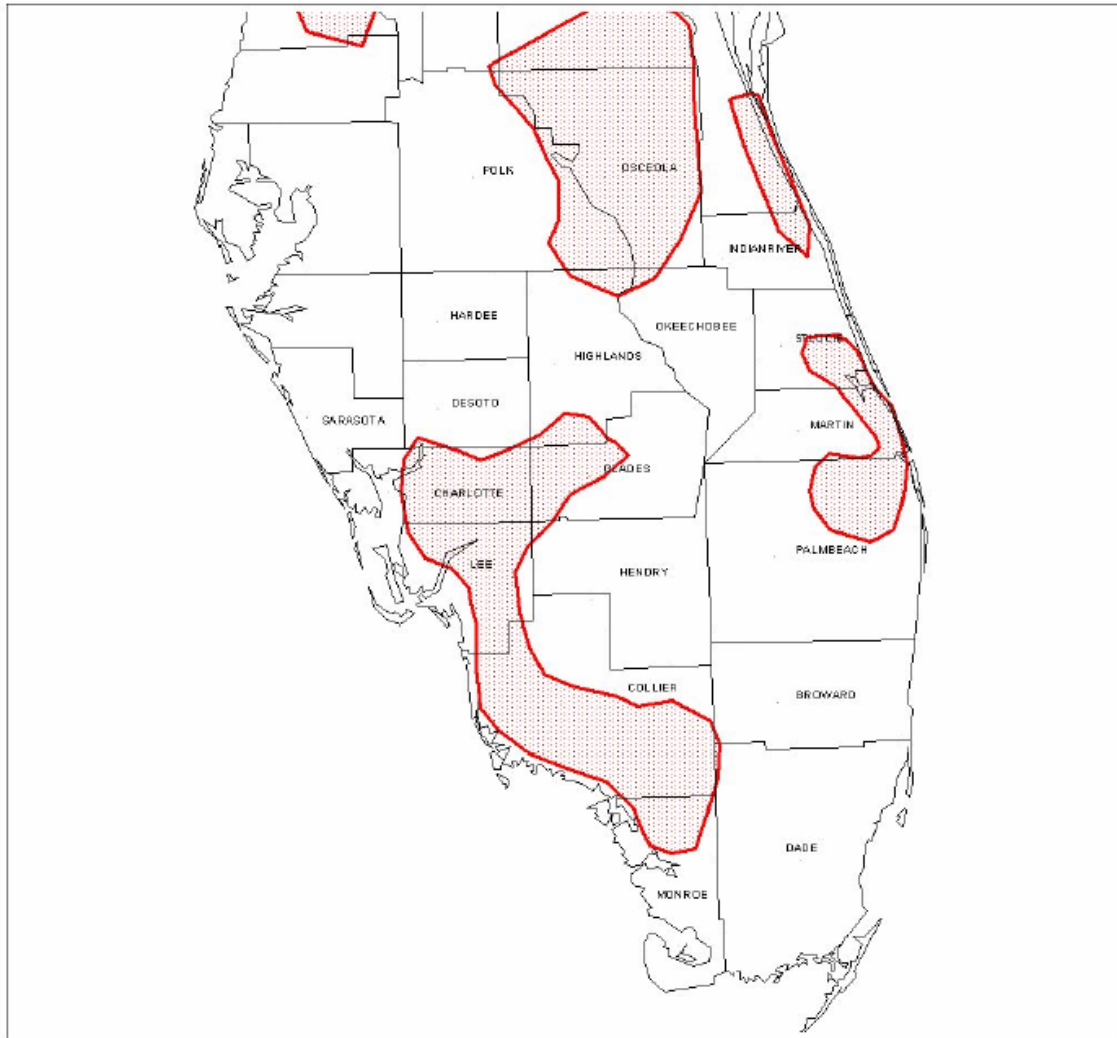
411-Pine Flatwoods

625-Hydric Pine Flatwoods

626-Hydric Pine Savanna

The assessment would exclude the acreage of these habitat types that have already been approved for development.

Figure 1. Service's RCW consultation area



## Florida Panther

The Service's Vero Beach Field Office has defined a consultation area for the Florida panther that includes portions of lands in Charlotte, Glades, Hendry, Lee, Collier, Palm Beach, Broward, Miami-Dade, and Monroe Counties, as well as the southern portion of Highlands County (Figure 2.). I suggest that the Florida panther cumulative effects assessment be conducted for each of these counties. The assessment area for each county would only include lands within the Service's Florida panther consultation area. I also suggest that an additional cumulative effects analysis be conducted for the entire panther consultation area south of the Caloosahatchee River. The analysis would consist of tallying the total acreage of the following habitat types in the assessment area:

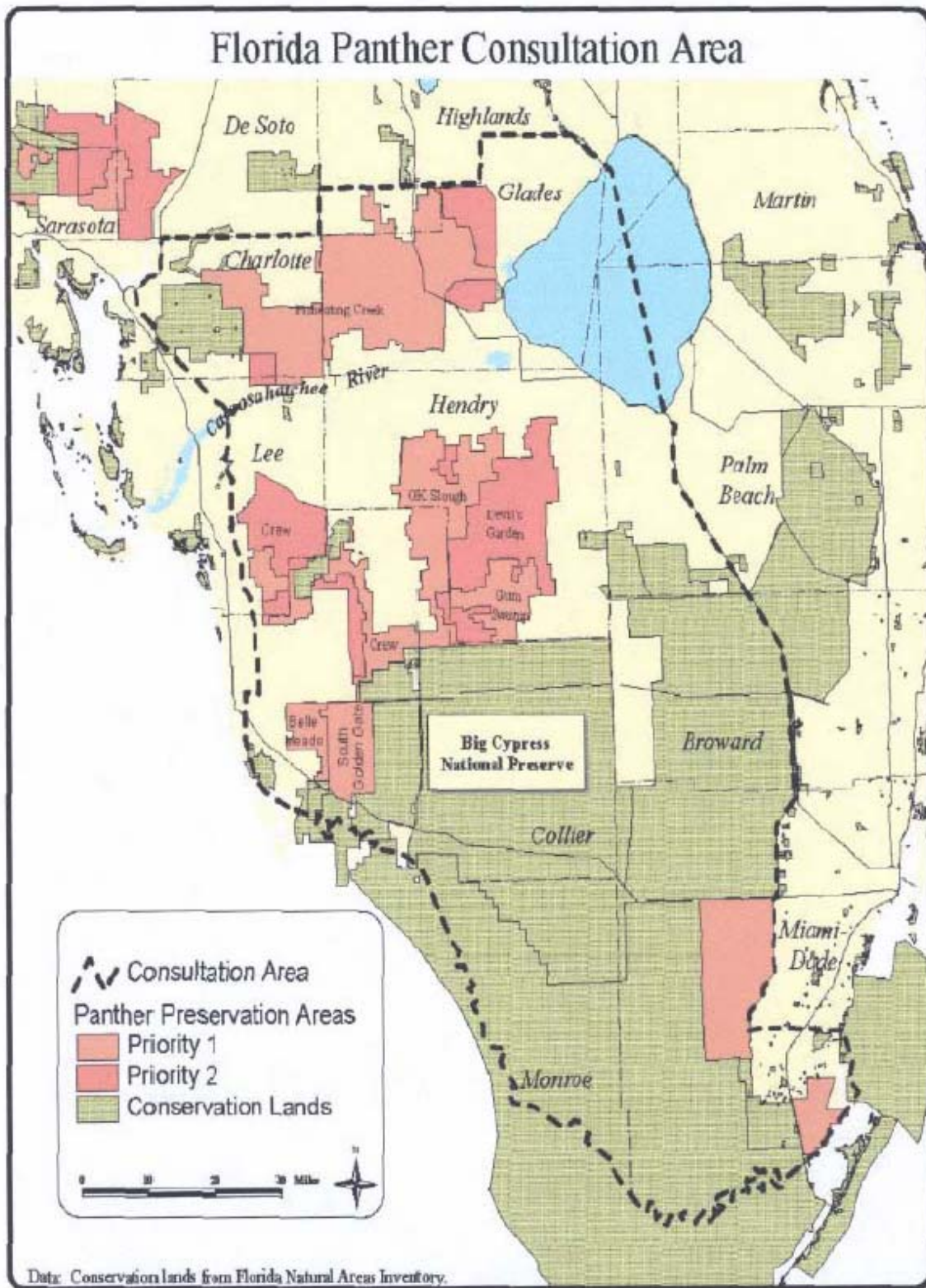
### FLUCCS Codes

- 211-Improved Pastures
- 212-Unimproved Pastures
- 213-Woodland Pastures
- 310-Dry Prairie
- 320-Shrub and Brushland
- 321-Palmetto Prairies
- 322-Coastal Scrub
- 329-Other Shrubs and Brush
- 330-Mixed Rangeland
- 410-Upland Coniferous Forest
- 411-Pine Flatwoods
- 412-Long Leaf Pine-Xeric Oak
- 413-Sand Pine
- 414-Pine-Mesic Oak
- 415-Mixed Pine
- 419-Other Pine
- 420-Upland Hardwood Forest
- 421-Xeric Oak
- 423-Oak-Pine-Hickory
- 425-Temperate Hardwood
- 426-Tropical Hardwoods
- 427-Live Oak
- 428-Cabbage Palm
- 429-Wax Myrtle-Willow
- 432-Sand Live Oak
- 433-Western Everglades Hardwoods
- 434-Hardwood-Conifer Mixed
- 435-Dead Trees
- 436-Upland Scrub, Pine, and  
Hardwoods
- 438-Mixed Hardwoods
- 439-Other Hardwoods

440-Tree Plantations  
441-Coniferous Plantations  
442-Hardwood Plantations  
443-Forest Regeneration Areas  
610-Wetland Hardwood Forest  
611-Bay Swamps  
613-Gum Swamps  
615-Stream and Lake Swamp  
(bottomland)  
616-Inland Pond and Sloughs  
617-Mixed Wetland Hardwoods  
618-Willow and Elderberry  
620-Wetlands Coniferous Forest  
621-Cypress  
622-Pond Pine  
624-Cypress-Pine-Cabbage Palm  
625-Hydric Pine Flatwoods  
626-Hydric Pine Savanna  
627-Slash Pine Swamp Forest  
630-Wetland Forested Mix  
631-Wetlands Scrub  
640-Vegetated Non-Forested Wetlands  
641-Freshwater Marshes  
642-Saltwater Marshes  
643-Wet Prairies  
644-Emergent Aquatic Vegetation  
740-Disturbed Lands

The assessment would exclude the acreage of these habitat types that have already been approved for development.

Figure 2. Florida Panther Consultation Area



## Sand Skink and Bluetail Mole Skink

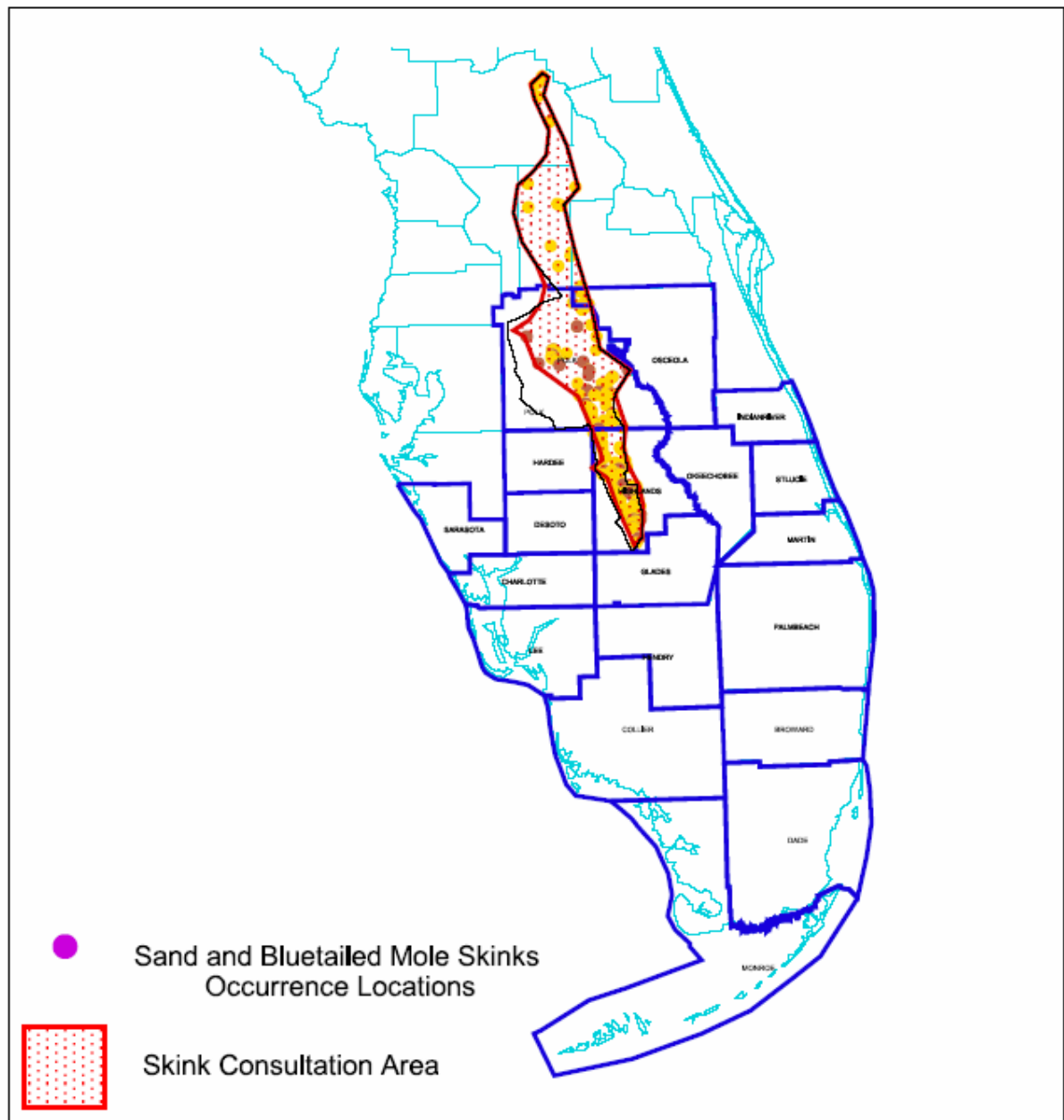
The Service's Vero Beach Field Office has defined a consultation area for the sand skink and the bluetail mole skink that includes lands in Highlands, Polk, Osceola, Lake, Orange, and Marion (Figure 3.). I suggest that the cumulative effects assessment be conducted for each of these counties. The assessment area for each county would only include lands within the Service's sand skink and bluetail mole skink consultation area. The cumulative effects analysis would consist of tallying the total acreage of the following habitat types in the assessment area:

### FLUCCS Codes

- 310-Dry Prairie
- 321-Palmetto Prairies
- 412-Long Leaf Pine-Xeric Oak
- 413-Sand Pine
- 421-Xeric Oak
- 432-Sand Live Oak
- 436-Upland Scrub, Pine, and  
Hardwoods

The assessment would exclude the acreage of these habitat types that have already been approved for development.

Figure 3. Service's Consultation Area for the Sand Skink and Bluetail Mole Skink



## Florida Scrub-Jay

The Service's Vero Beach Field Office has defined "Service Areas" for the Florida scrub-jay based on the location of metapopulations of scrub-jays in Florida (Figure 4.). I suggest that the cumulative effects assessment be conducted for each of the Service Areas, and for each county that contains a Service Area. The assessment area for each county would only include lands within the scrub-jay Service's Area(s). The cumulative effects analysis would consist of tallying the total acreage of the following habitat types in the assessment area:

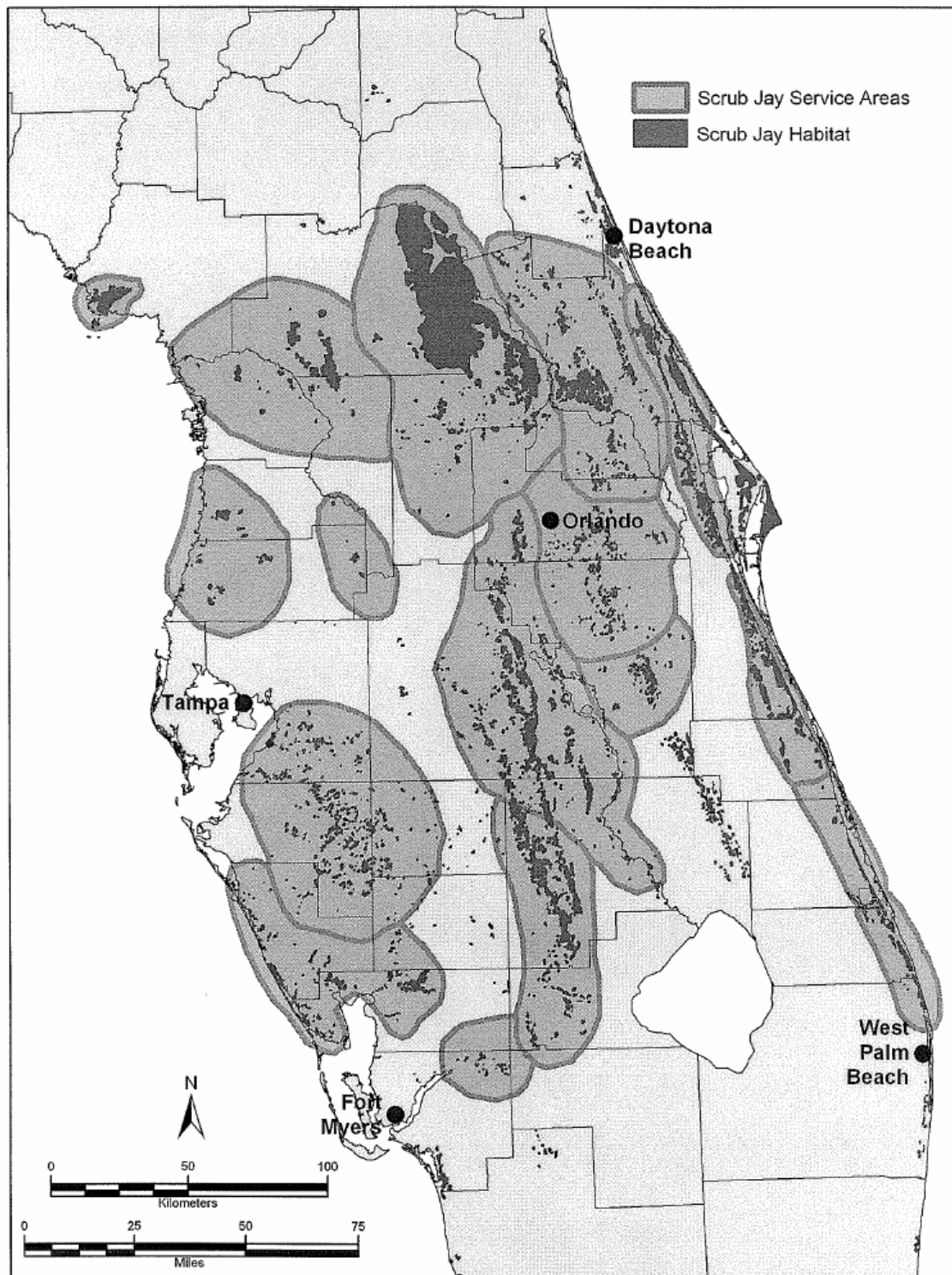
### FLUCCS Codes

- 310-Dry Prairie
- 321-Palmetto Prairies
- 322-Coastal Scrub
- 412-Long Leaf Pine-Xeric Oak
- 413-Sand Pine
- 421-Xeric Oak
- 432-Sand Live Oak
- 436-Upland Scrub, Pine, and  
Hardwoods

The assessment would exclude the acreage of these habitat types that have already been approved for development.



Figure 4. Mitigation Service Areas for the Florida Scrub-Jay



## Audubon's crested caracara

The Service's Vero Beach Field Office has defined a consultation area for the Audubon's crested caracara that includes lands in Broward, Hendry, Lee, Okeechobee, Highlands, DeSoto, Hardee, Sarasota, Polk, Osceola, Indian River, St. Lucie, Martin, Palm Beach, Glades, Charlotte, Lee, Collier, and Monroe (Figure 5.). I suggest that the caracara cumulative effects assessment be conducted for each of these counties. The assessment area for each county would only include lands within the Service's caracara consultation area (the Service's Jacksonville Field Office will have to be contacted to identify additional caracara assessment areas in north Florida). The caracara cumulative effects analysis would consist of tallying the total acreage of the following habitat types in the assessment area:

- 190-Open Land
- 210-Croplands and Pasturelands
- 211-Improved Pastures
- 212- Unimproved Pastures
- 213-Woodland Pastures
- 214-Row Crops
- 215-Field Crops
- 242-Sod Farms
- 251-Horse Farms
- 252-Dairies
- 254-Aquaculture
- 259-Other
- 260-Other Open Lands Rural
- 261-Fallow Crop Land
- 310-Dry Prairie
- 321-Palmetto Prairies
- 329-Other Shrub and Brush
- 330-Mixed Rangelands
- 428-Cabbage Palm
- 624-Cypress-Pine-Cabbage Palm
- 641-Freshwater Marshes
- 643-Wet Prairies

The assessment would exclude the acreage of these habitat types that have already been approved for development.

Figure 5. Service's Consultation Area for the Audubon's Crested Caracara

