



Environmental Screening Tool

Agenda

- Introduction
- Logon to EST Web site
- Overview of EST home page
- Highlight Enhancements
- Review Basic Navigation
- Set Up User Preferences
- Perform Key Tasks
 - Review Projects
 - Search for Projects
 - Review Summary Report
- How To Find More Information

etdm



Agenda

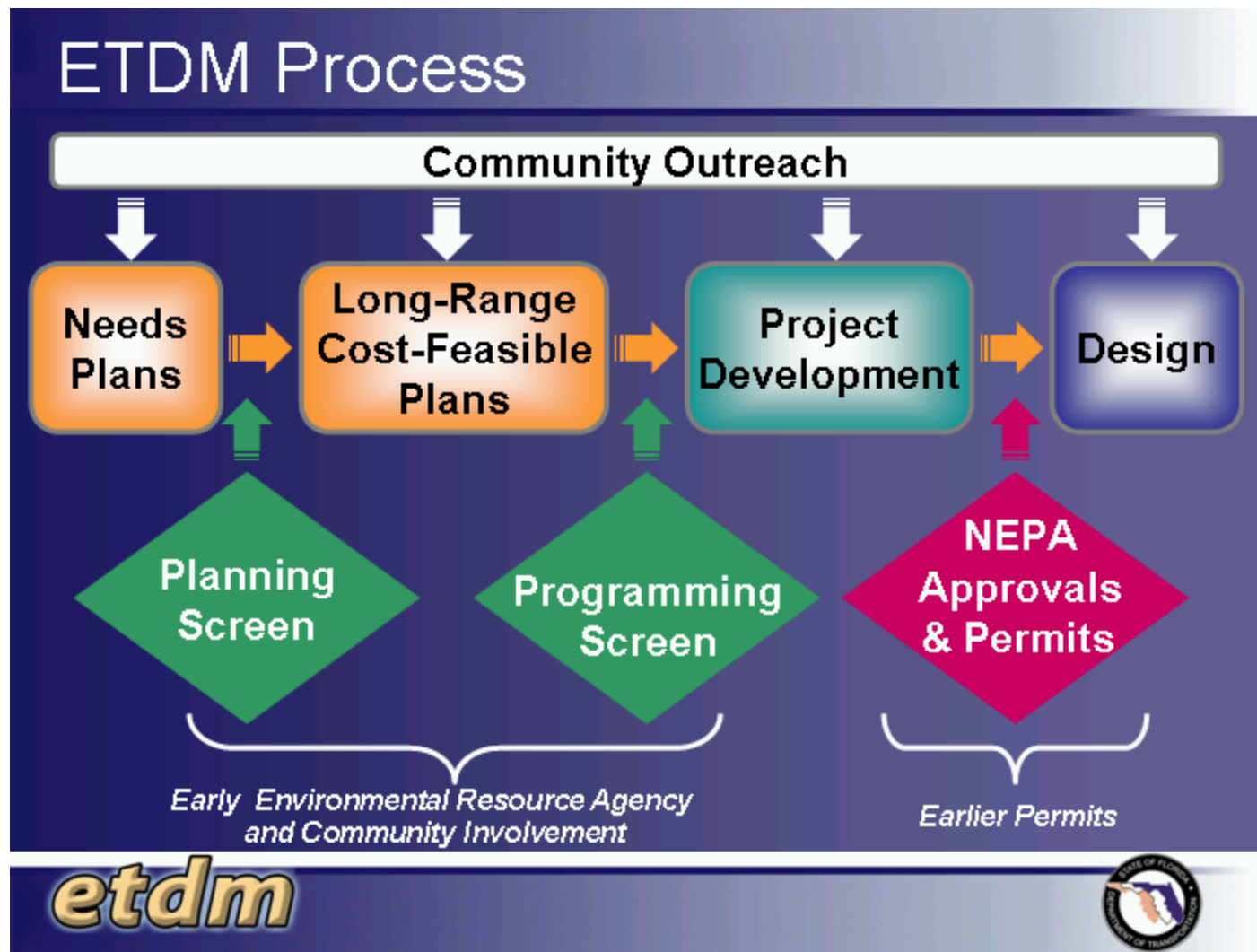
ETDM Vision Statement

"It is our vision to improve transportation decision making in a way that protects our natural and human environmental resources. It is our goal that we, as environmental resource and transportation agencies, establish a systematic approach that integrates land use, social, economic, environmental, and transportation considerations. This approach will include the active participation of Federal, State and Local agencies, and the public. It will lead to decisions that provide the highest quality of life and an optimal level of mobility for the public we serve."

etdm



ETDM Vision Statement



ETDM Process

Origins of Projects to be Screened

Major Capacity Improvement Projects

- Metropolitan Planning Organization (MPO) Long Range Transportation Plans (LRTPs)
- FDOT Strategic Intermodal System (SIS) and Florida Intrastate Highway System (FIHS) plans
- FDOT Statewide Bridge Program



Origins of Projects to be Screened

Key Players and Roles

- **ETDM Coordinators**
 - Coordinate activities of the process:
 - Initiate project screens and notify ETAT
 - Monitor timeliness and prepare summary reports
 - Coordinate dispute resolution
- **Community Liaison Coordinators**
 - Prepare sociocultural effects inventory
 - Review GIS analysis results
 - Respond to public comment
 - Assist with summary reports



Key Players and Roles

Key Players and Roles (continued)

- **Environmental Technical Advisory Team Members**

- ETAT member speaks for agency – responsible for interaction with FDOT
- Role shifts from planning phase through permit approval
- ETAT interfaces throughout NEPA Process
- ETAT coordinates permit issuance during Project Development



Key Players and Roles (continued)

ETAT Review Actions

- Verify that Agency data is current
- Review project description
- Review project and data in field if needed
- Coordinate within own agencies
- Comment on purpose and need
- Review GIS analysis results
- Evaluate project effects
- Indicate degree of effect
- Provide commentary of potential effects
- Provide recommendations for additional reports or studies



ETAT Review Actions

Degree of Effect

Enhanced

Positive effect on resources

Minimum/None

Little adverse effect on resources

Moderate

Resources are affected; avoidance, minimization options available

Substantial

ETAT understands project need; substantial interaction required; avoidance, minimization, mitigation

Potential Dispute

Does not conform to agency requirements

etdm



Degree of Effect

Status as of 5/15/2005

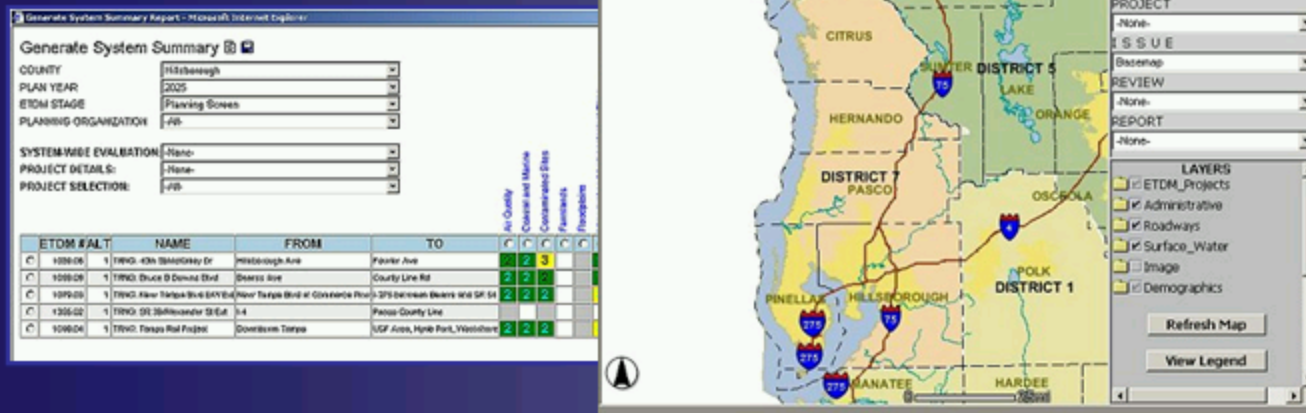
- 154 Projects Through ETAT Review
- 500 Participants
 - 150+ Trained in Project Input
 - 150+ ETAT Reviewers Trained
- Preparation for 2006 Work Program
 - Class of Action Determination Completed on 17 Projects
 - Planning Screen Event – In Conjunction with Plan Updates
 - Programming Screen Event – Spring 2005
- Public Access Site Available



Status as of 5/15/2005

Key Technology Components

- Relational Database Management Systems
- Geographic Information Systems
- Internet



Relational Database

"T_PROJECTS"		
PK_PROJECT	PRJNAME	PLA
1039	TRNG: 40th St/McKinley Dr	3
1059	TRNG: Bruce B Downs Blvd	43
1079	TRNG: New Tampa Blvd E/W Ext	127
1355	TRNG: SR 39/Alexander St Ext	1
1099	TRNG: Tampa Rail Project	A1-A
1350	TRNG: Test	

"T_PROJECT_ALT"				
PK_PRJ_ALT	FK_PROJECT	COST	MODE_ROA	
1	1039	57769000	Y	
1	1059	73433625	Y	
1	1079	15064000	Y	
1	1099	985000000		
1	1325	0		

"T_PROJECT_SEGMENTS"				
PK_SEGME...	FK_PROJECT	FK_PRJ_ALT	DATE_ST	
3223	1039	1	14-Feb-2	
3264	1059	1	10-Feb-2	
3263	1059	1	14-Feb-2	
3283	1079	1	10-Feb-2	
3323	1099	1	10-Feb-2	
3343	1099	1	10-Feb-2	
3588	1325	1		
3589	1325	1		
3640	1350	1		

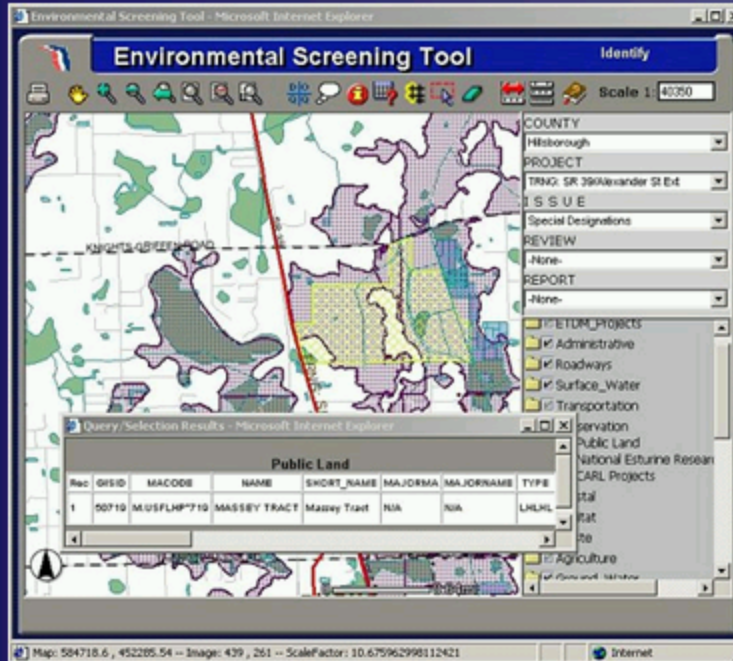
"T_PROJECT_REVIEWS"					
FK_PROJECT	FK...	AGENCY_INVO...	FK_USERID	REVIEW_D	
1039	1	Y	USCOE	17-Feb-20	
1039	1	N	USCG	17-Feb-20	
1039	1	Y	frank_kalpakis	18-Feb-20	
1039	1	Y	USCG	17-Feb-20	
1039	1	N	FFWCC	17-Feb-20	
1039	1	N	NPS	16-Feb-20	
1039	1	Y	FHA	17-Feb-20	
1039	1	Y	DEP	17-Feb-20	
1039	1	Y	USFWS	17-Feb-20	
1039	1	Y	USEPA	17-Feb-20	

etdm



Relational Database

Geographic Information System



A computer system for capturing, managing, integrating, manipulating, analyzing, and displaying data which is spatially referenced to the Earth.

etdm



Geographic Information System

Data Preparation Responsibilities

Data		Responsibility
Project Data	→	ETDM Coordinators
Plan Summaries	→	ETDM Coordinators
Sociocultural Data	→	District Community Liaison Coordinators/MPOs
Environmental Resources	→	ETAT
Other Data Resources	→	FGDL

Data should be continuously updated



Data Preparation Responsibilities

Quality Control/Quality Assurance

- Locational Accuracy
- Data Currency and Completeness
- Data Documentation

etdm



Quality Control/Quality Assurance

Locational Accuracy

- The goal of the ETDM database in terms of locational accuracy is 12 meters or better
- Enables the data to be overlaid with relative accuracy over USGS 1:24,000-scale map



Comparison of 1:100,000 roads (gray) and 1:24,000 roads (orange) shows temporal and locational differences.

etdm



Locational Accuracy

Data Quality Review

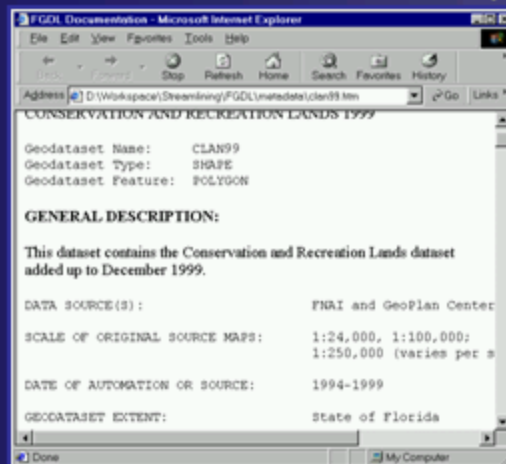
- Is a more current version of this data set available?
- Is there another data set available that more accurately reflects the current condition of resources in this area?
- Are there problems with the data set that should be corrected?
- Is the information in the metadata up to date?
- Are there any additional constraints about using the data that other ETAT reviewers should be made aware of and should be documented in the metadata?



Data Quality Review

Data Documentation Standard

Metadata - documentation about the lineage and accuracy of a data set.



- Name and Phone of Contact
- Source of Data
- Time Period associated with year
- File Format Spec
- Project Parameters
- Datum
- Collection Methods
- Estimate of Locational Accuracy

etdm



Data Documentation Standard

Data Retention

- All ETDM Transportation project information for at least **five years following completion of construction** of the last project segment,
 - a recoverable snapshot at each project status and/or phase change during the project lifecycle.
 - Upon deletion from the ETDM database, these records shall be archived on electronic storage media.
- Projects not constructed, the records shall be retained on the EST for at least **five years following the last action**.
 - Upon deletion from the ETDM database, these records shall be archived on electronic storage media.



Data Retention

Introducing EST, version 3.0...

etdm Efficient Transportation Decision Making

Environmental Screening Tool **est**

My ETDM Bookmarks Project Input Project Management ETAT Review Screens Sociocultural Effects Logout

Current Selection: **No Projects Selected** New Search Modify Search Show on Map

Default Project from Selection: Saved Searches: History:

Tools

- Maintain Project Diary
- Record Results of Project Review
- Document Public Involvement Activities
- Coordinate ETAT Activities

Reports **Wizards** **Maps** **Account Settings** **Administration** **Help**

Welcome!

We've given the EST a face-lift & we hope you like it!

Improved Project Search

- New project look-up tool -- try it out by clicking on the **New Search** button
- Saved Searches** gives quick access to frequently used project and groups of projects
- Switch between recent project selections with the **History** menu

Integrated Functionality

- No need to hunt for a report or form among 5 different modules -- they're all found in the **Left Navigation Menu**
- Lost pop-up windows are a thing of the past! Every thing opens within the EST frames. Right-click on a menu option to open a page in a new **Tab** window
- Miss those old modules? We know change is hard, so the modules will be available for a few more months in the **Top Navigation Bar**. Use the **Cross Reference Table** to find functions in the new menu
- Can't remember what to do next? Try out a **Wizard** to step you through a process

User Profiles

- Open your favorite report or form when you log on
- Pick a default map and visible data layers to display when you first open the map viewer
- All this and more... in **Account Settings**

Artistic Flair

- With help from a graphic artist, the EST pages now have a publication-quality style! **Wow!**

STATE OF FLORIDA DEPARTMENT OF TRANSPORTATION

Public Site Project Summary Participating Agencies What's New Contacts Training Events Online Help FAQ Change Password

etdm

STATE OF FLORIDA DEPARTMENT OF TRANSPORTATION

Show/Hide Map

Introducing EST, version 3.0...

Enhancements

Integrated Functionality

- All reports and forms are found in the **Left Navigation Menu**
- Everything opens within the EST frames. Right-click on a menu option to open a page in a new **Tab** window
- Miss those old modules? Access functionality through the old modules in the **Top Navigation Bar**. Cross Reference **Tables** help you find functions in the new menu
- Can't remember what to do next? Try out a **Wizard** to step you through the process



etdm



Enhancements

Enhancements

User Profiles

- Choose to open your favorite report or form when you log on OR open to the last one viewed
- Create a “dashboard” of mini-reports
- Pick a default map and visible data layers to display when you open the map viewer
- Set up email notification preferences
- Update contact information



etdm



Enhancements

Enhancements

Improved Project Search

- New project look-up tool – try it out by clicking on the **New Search** button
- **Saved Searches** gives quick access to frequently used projects and groups of projects
- Switch between recent project selections with the **History** menu



etdm



Enhancements

Enhancements

And more...

- Create PDF version of any report
- Easy access to Help on every page
- On-line ETDM library
- Use Bookmarks for frequently needed pages
- Interactive GIS Analysis Results report
- Summary report by project rather than plan
- Short Degree-of-Effect Form available to apply commentary to multiple issues
- 7 Degrees of Effect



etdm



Enhancements

EST Demonstration

- Testing and Training Site

<https://stage.fla-etat.org/est/>

- Production Site

(EST Version 3.0 goes live on December 5th)

www.fla-etat.org

etdm



EST Demonstration

More Information

- On-line Help
- Download User Handbook
(See ETDM Library)
- Monthly Hands-On Training
- Help Desk

help@fla-etat.org
(850)414-5334



etdm



More Information

Environmental Screening Tool



etdm



Environmental Screening Tool

A Sharing Slide

Desktop - Pete McGilvray