



Grove Interchange

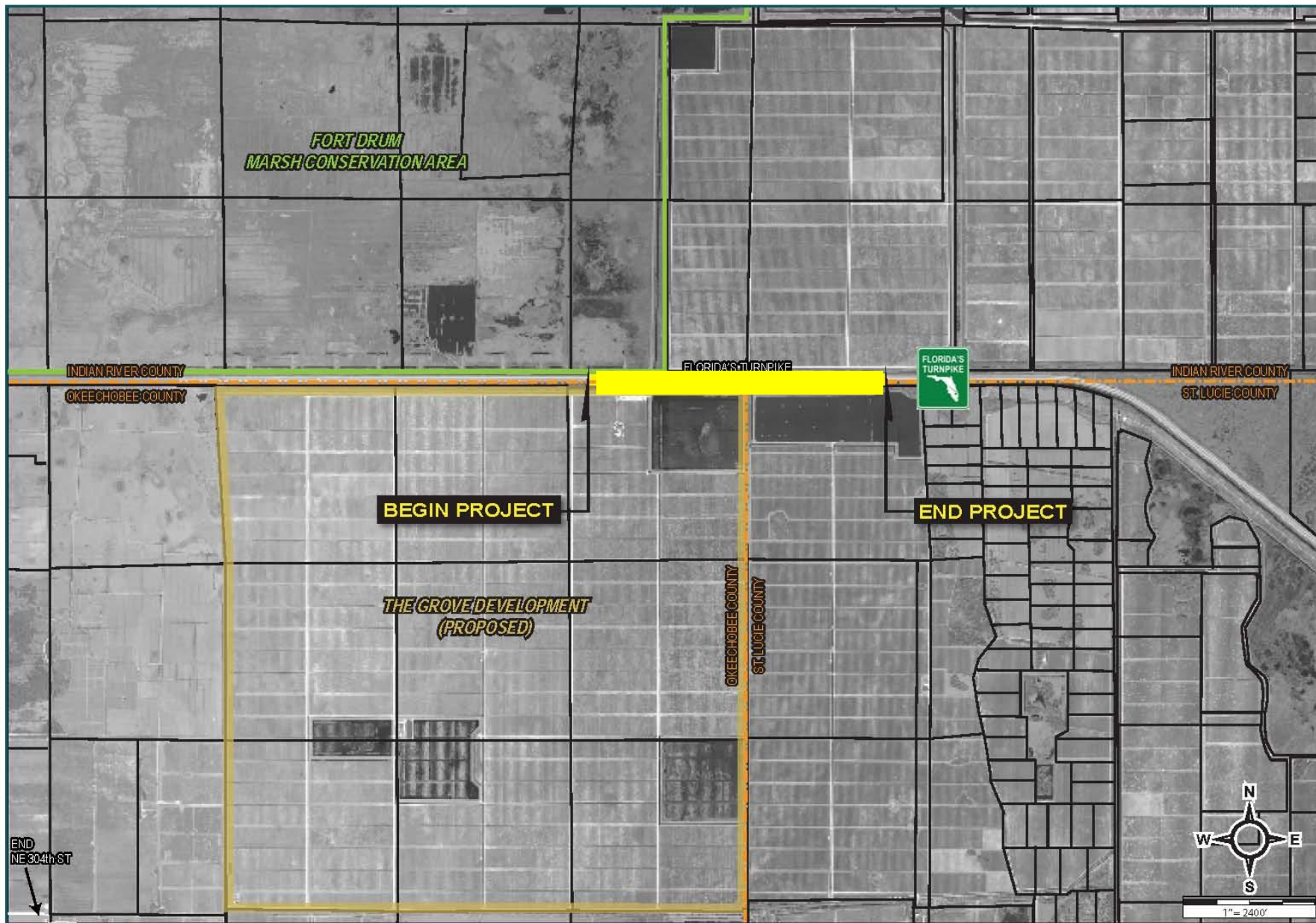
Dispute Resolution

Imran Ghani

Joint ETAT Coordination Workshop

May 26-27, 2009





LEGEND

- County Line
- Parcel Lines
- Project Study Limits
- Proposed Grove Development Boundary
- Fort Drum Marsh Conservation Area Boundary

Figure 2-3
Project Study Limits

ETDM: 8967

Proposed Interchange at Florida's Turnpike (MP 175) • Okeechobee and Indian River Counties

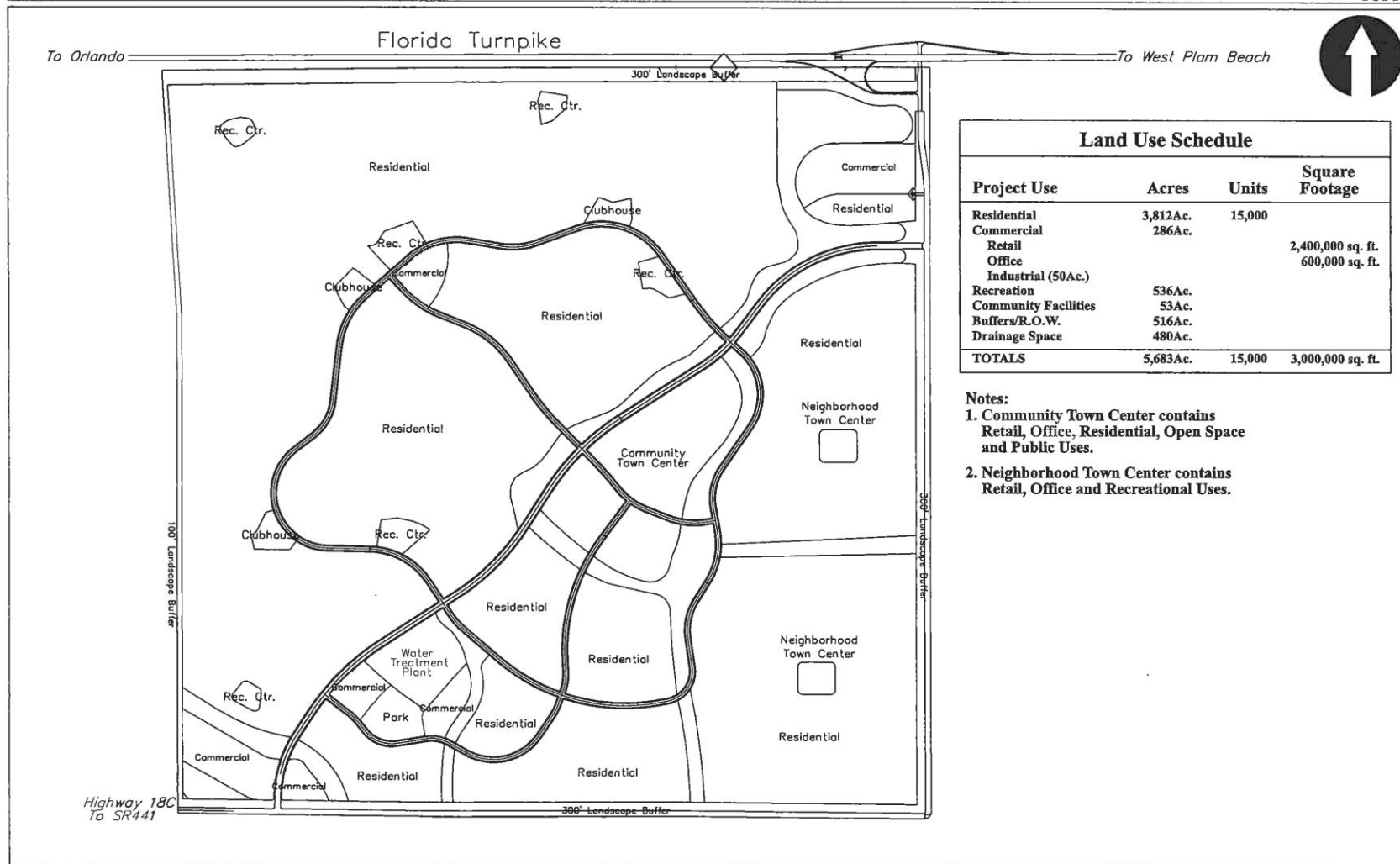


Figure 1. Exhibit H
Okeechobee County, Florida



Date: May 2006

The map displays St. Lucie County, Florida, with various land parcels and roads. Key features include:

- Roads:** US Highway 1, US Highway 1, SR 68 (Orange Avenue), SR 70 (Okeechobee Blvd.), and several local roads like Hillside Road, Minute Maid Rd, and Midway Road.
- Groves and Land:** Scott 2000 Grove (1881 AC), Scott 6000 Grove (5484 AC), Florida Maid Grove (882 AC), Cloud Grove (7267 AC), and others. A yellow highlighted area is labeled "175-176 mp".
- Geographical Features:** Quail Creek, Adams Ranch, and the St. Lucie County Fairgrounds.
- Infrastructure:** The proposed wastewater treatment plant and the St. Lucie Co. Intl Airport.
- Boundaries:** St. John's Water Control District Boundary and the Okeechobee County Indian River County boundary.
- Other Labels:** FORT DRUM, Oslo Road, E & B Grove (558 AC), and various other smaller groves and roads.



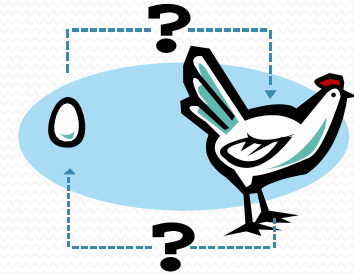
Institute of Management Sciences
First Floor, The Hong Kong Polytechnic University
(Kowloon)

Grove Interchange

- Developer initiated project
- Follow Turnpike Process
 - Traffic
 - Regional Connectivity
 - Revenue
 - ETDM
- Programming Screen
- ETAT review initiated 4/27/2007

Purpose and Need Comments

- Access to Grove Development ?
- Which comes first?
 - Chicken or Egg?
- Comments directed at Turnpike or Developer?



Project Effects Comments

- Florida Fish and Wildlife Conservation Commission – Substantial for Wildlife and Habitat
 - Move the interchange 2,000 East
- St. Johns River Management District – Dispute Resolution for Wetlands Effects
 - Impact to Conservation Area
 - Impact to Wading Bird Nest Site

Current Selection: **Groves Interchange (8967)**

New Search

Modify Search

Show on Map

Default Project from Selection:

#8967 The Grove Interchange w/ Florida's Turnpike

Saved Searches:

History:

Search Analyze Edit Print Help



Legend Layers

Aerials

DOQQ

Show/Hide Map



Scale 1: 30000

Units MILES

Current Selection: **Groves Interchange (8967)**

New Search

Modify Search

Show on Map

Default Project from Selection:

#8967 The Grove Interchange w/ Florida's Turnpike

Saved Searches:

History:

Search Analyze Edit Print Help



Legend Layers

Aerials

DOQQ

Show/Hide Map



Scale 1: 30000

Units **MILES**

Programming Screen

- ETAT review completed 6/27/2007
- Dispute Resolution Meeting on 01/22/2008
 - 2 concerns:
 - Fort Drum Conservation Area
 - Wood Stork Rookery

INDIAN RIVER COUNTY

Fort Drum
Marsh Conservation Area

Evans Property
(Remains Agricultural)

Evans
(Remains

INDIAN R

PROPERTY LINE

POTENTIAL
POND CP-62

POTENTIAL
POND D

POTENTIAL
POND CP-25

PROPOSED L.A. R/W LINE

330' FPL EASEMENT

EXIST OVERHEAD
POWER LINES

EXIST ACCESS
(TO BE RECONFIGURED)

PROPOSED
BRIDGE

RAMP C

PROPOSED TOLL
GANTRY

EXISTING
BRIDGE

PROPOSED TOLL
GANTRY

RAMP B

EXIST
POWER

EXIST
CANAL
RELOC

EXIST

EXIST L/A R/W LINE

1150

1130

1140

1120

1110

100

420

410

1090

EXIST OVERHEAD
POWER LINES

EXIST ACCESS
(TO BE RECONFIGURED)

PROPOSED
BRIDGE

PUMP STATION
(TO BE RELOCATED)

RAMP D-1

RAMP D-2

PROPOSED
L.A. R/W LINE

PROPOSED
TOLL
GANTRY

POND C

POND B

POND A

COUNTY LINE

END PROJECT
STA. 1158+00

Resolution

- No impact to Fort Drum Conservation Area by the interchange
- Orange Grove agricultural activity
- Degree of effect lowered from 5 (Dispute Resolution) to 4 (Substantial)
- Recession

Lessons Learned



Lessons Learned

- Clearly identify owner of projects
- DRI reviewer vs. ETDM reviewer
- Be aware of surrounding
- Be aware of buffers

Questions

