

HIGHWAY

S

G

I

N

E

E

KINGS HIGHWAY (SR 713)

STUDY

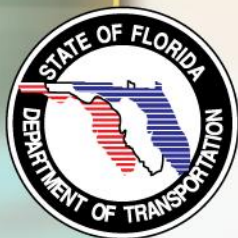
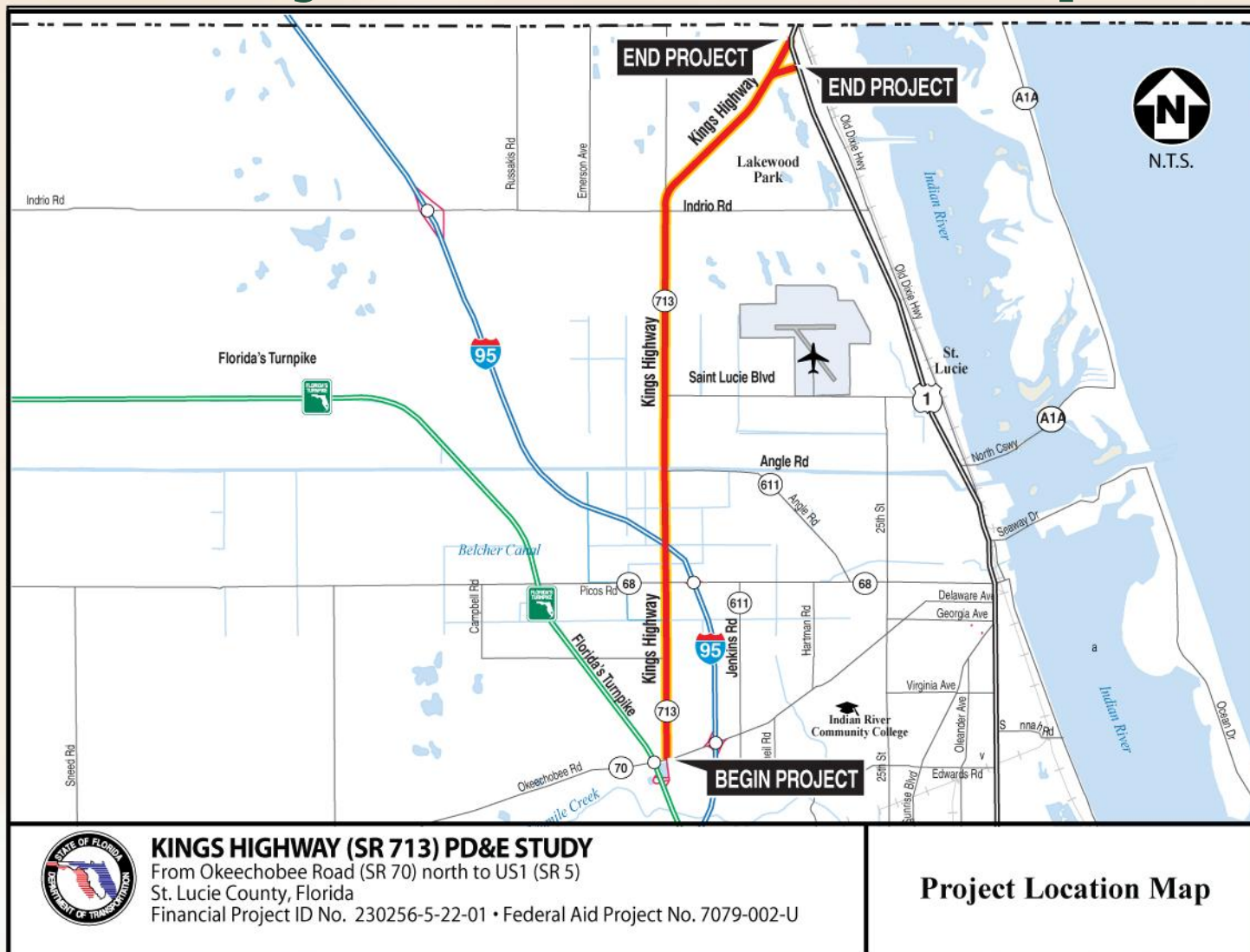
FROM
OKEECHOBEE ROAD
NORTH TO US 1
(SR 70)
(SR 5)

FPID No. 230256-5-22-01

FD&W



Project Location Map



KINGS HIGHWAY (SR 713)

PD&E
STUDY



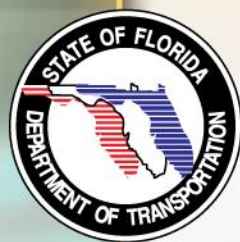
KINGS HIGHWAY (SR 713)

PD&E
STUDY



KINGS HIGHWAY (SR 713)

PD&E
STUDY



KINGS HIGHWAY (SR 713)

PD&E
STUDY



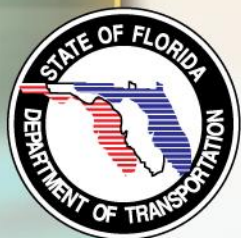
KINGS HIGHWAY (SR 713)

PD&E
STUDY



KINGS HIGHWAY (SR 713)

PD&E
STUDY



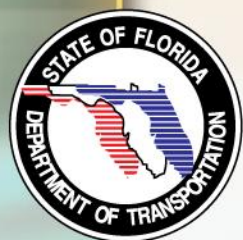
KINGS HIGHWAY (SR 713)

PD&E
STUDY



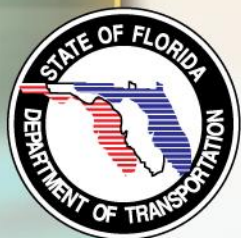
KINGS HIGHWAY (SR 713)

PD&E
STUDY



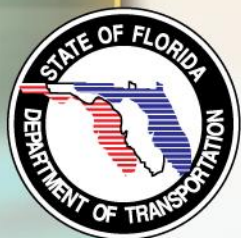
PD&E Study Components

- Public Involvement
- Engineering
- Environmental



PD&E Study Components

- Public Involvement
- Engineering
- Environmental



Public Involvement

- Advance Notification Transmitted June 2008
- Elected Officials/Agency Kickoff Meeting July 2008
- Public Kickoff Meeting July 2008
- Public Alternatives Workshop Summer 2009
- Public Hearing Winter 2011



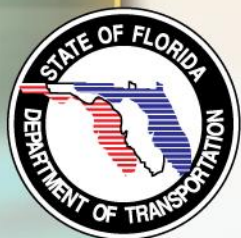
PD&E Study Components

- Public Involvement
- **Engineering**
- Environmental

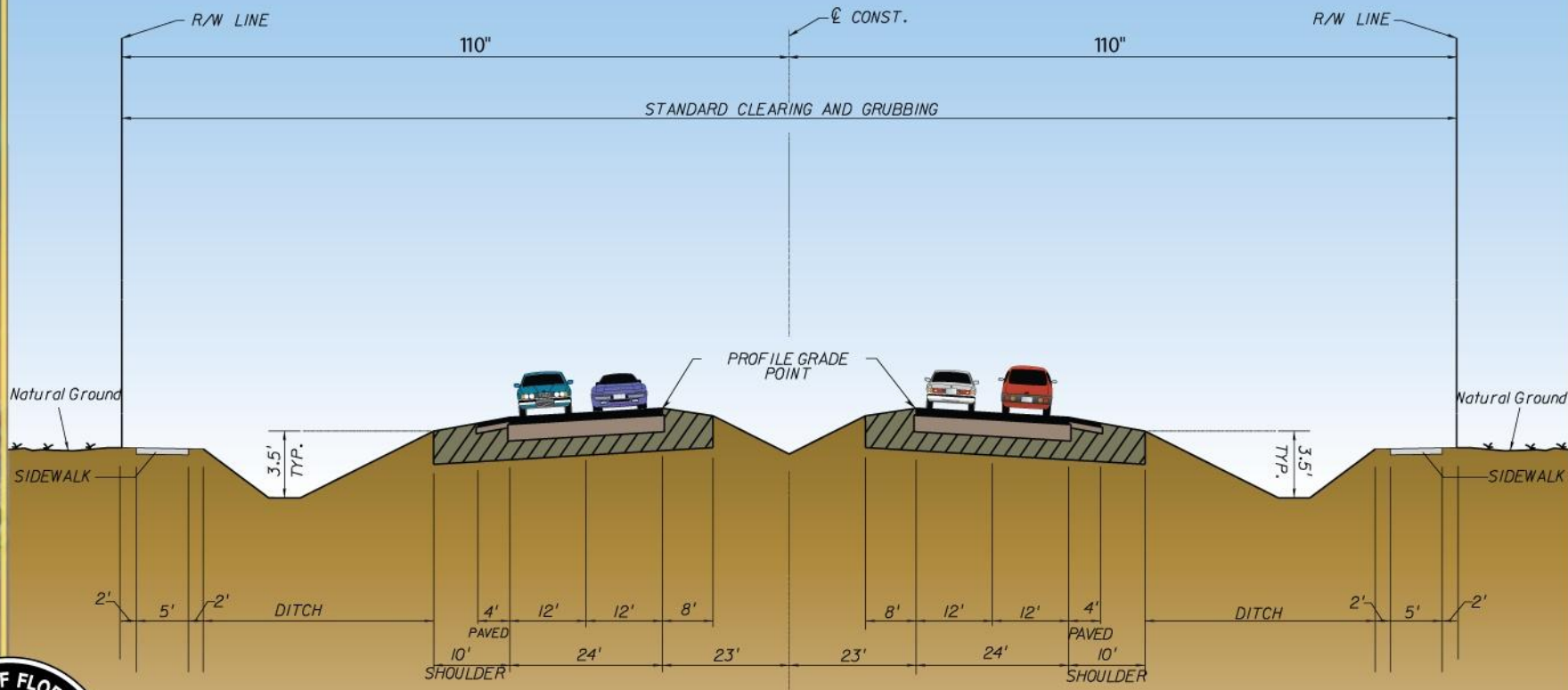


Engineering

- Data collection and analysis
- Corridor analysis
- Traffic analysis
- Typical section
- Design alternatives
- Right of way determination



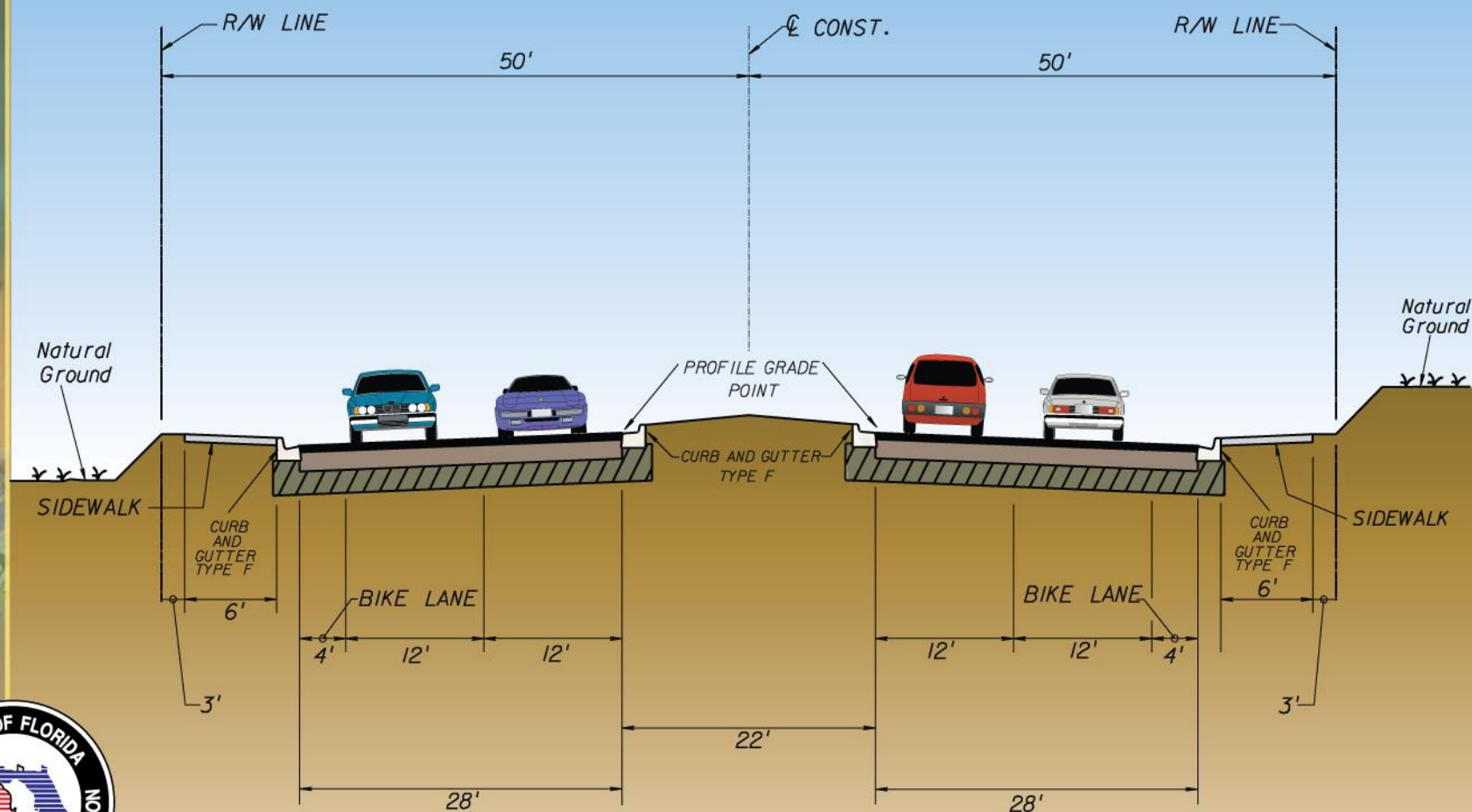
1994 Approved PD&E Study



From SR 70 to Indrio Road

Proposed Kings Highway Typical Section

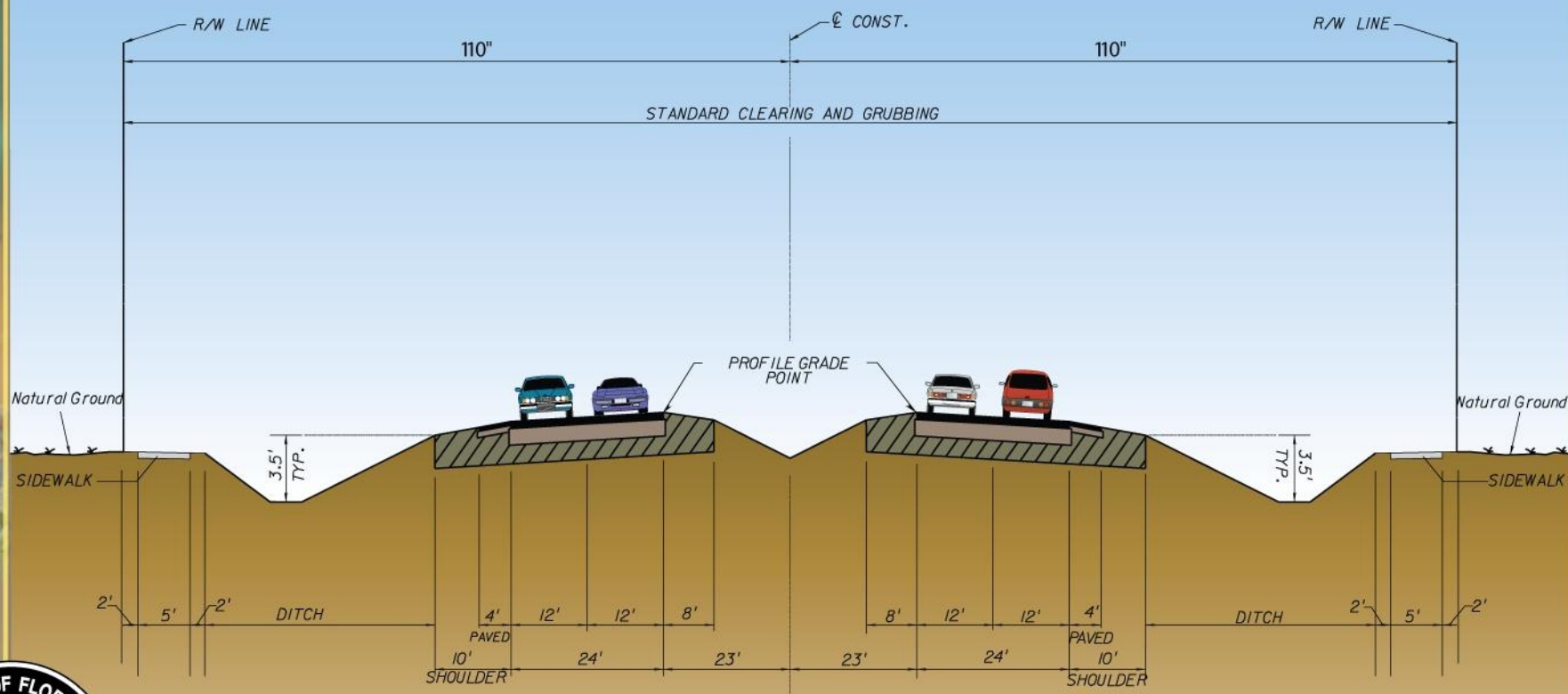
1994 Approved PD&E Study



From Indrio Road to US 1 (SR 5)

Proposed Kings Highway Typical Section

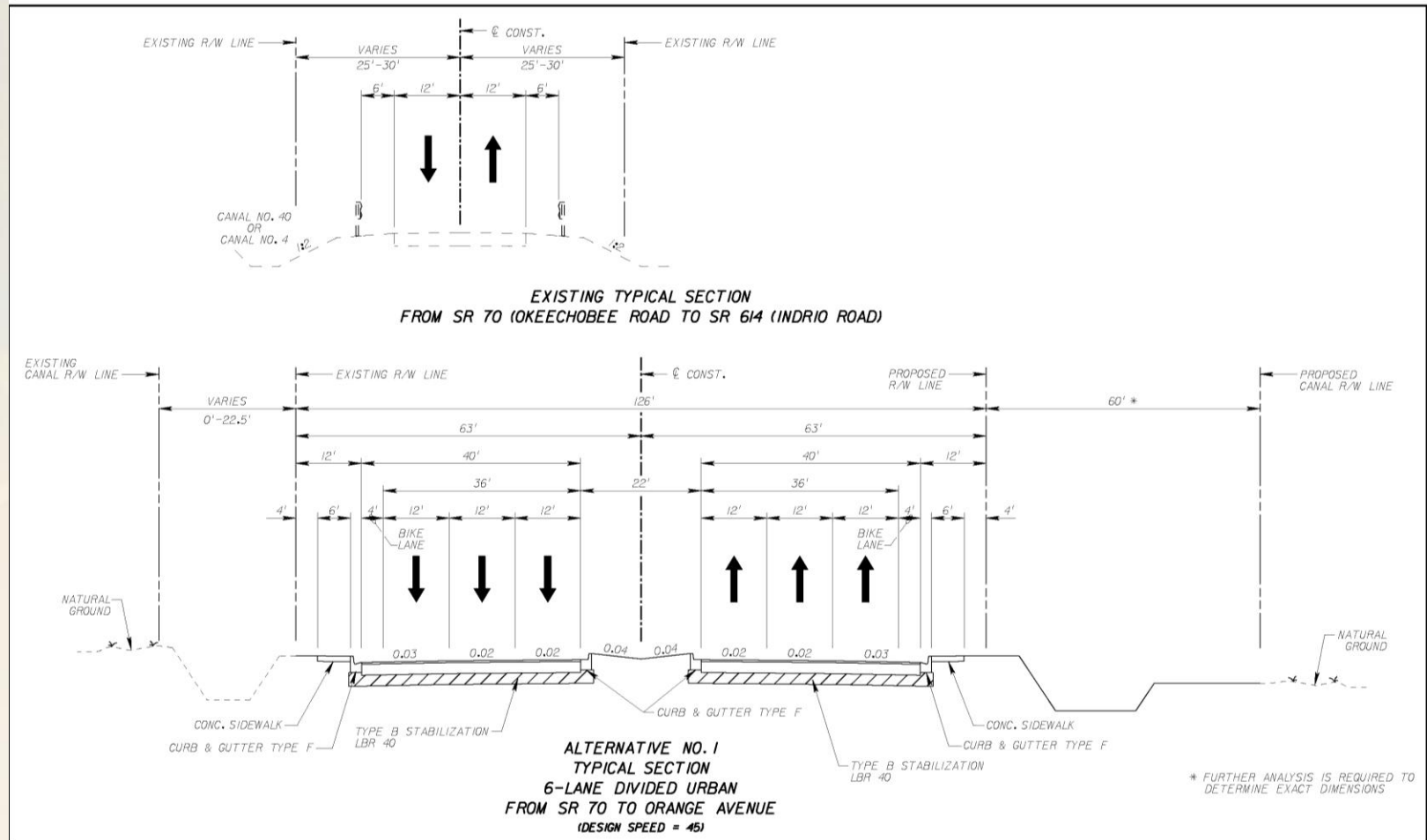
1994 Approved PD&E Study



From SR 70 to Indrio Road

Urban Typical Sections Now Being Evaluated



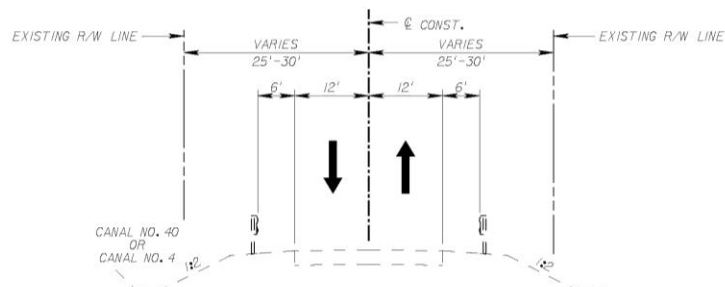


PD&E STUDY

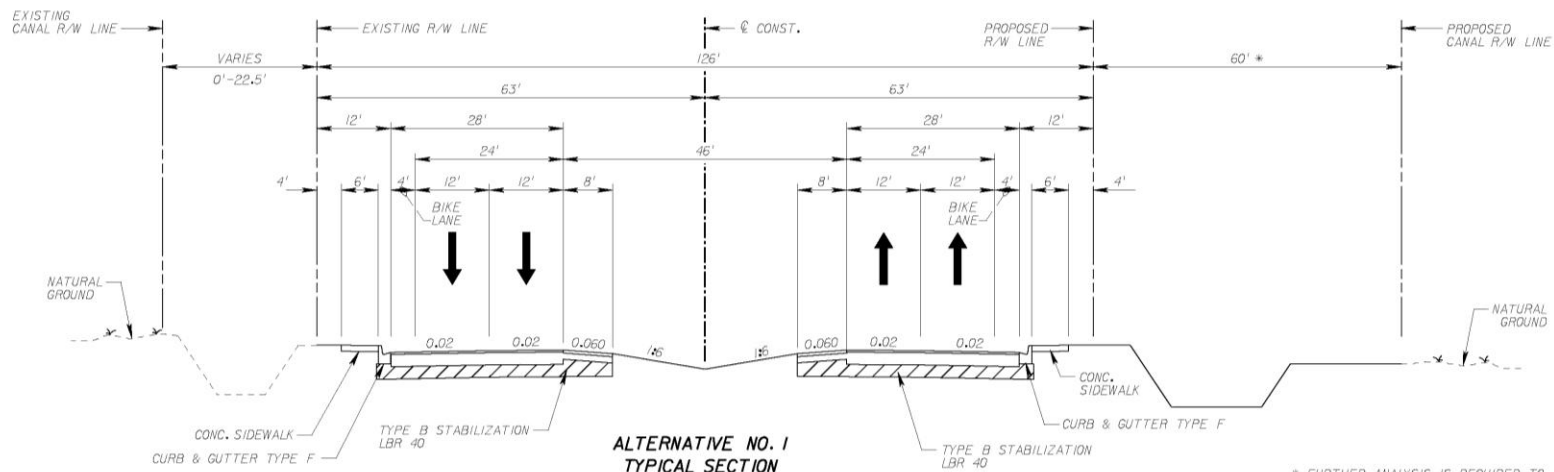


KINGS HIGHWAY (SR 713)

PD&E
STUDY

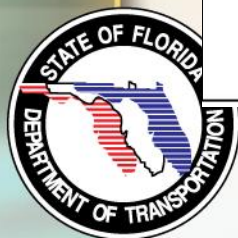


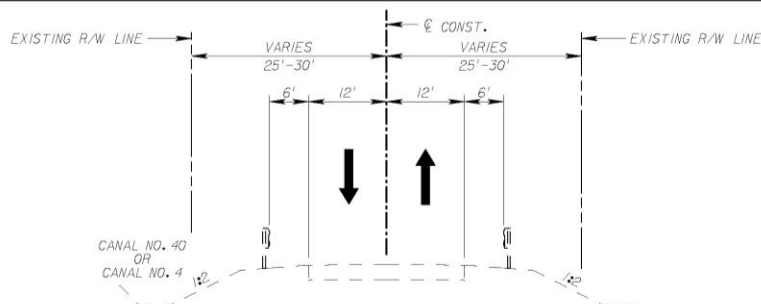
EXISTING TYPICAL SECTION
FROM SR TO (KEECHOBEE ROAD TO SR 614 (INDRIO ROAD)



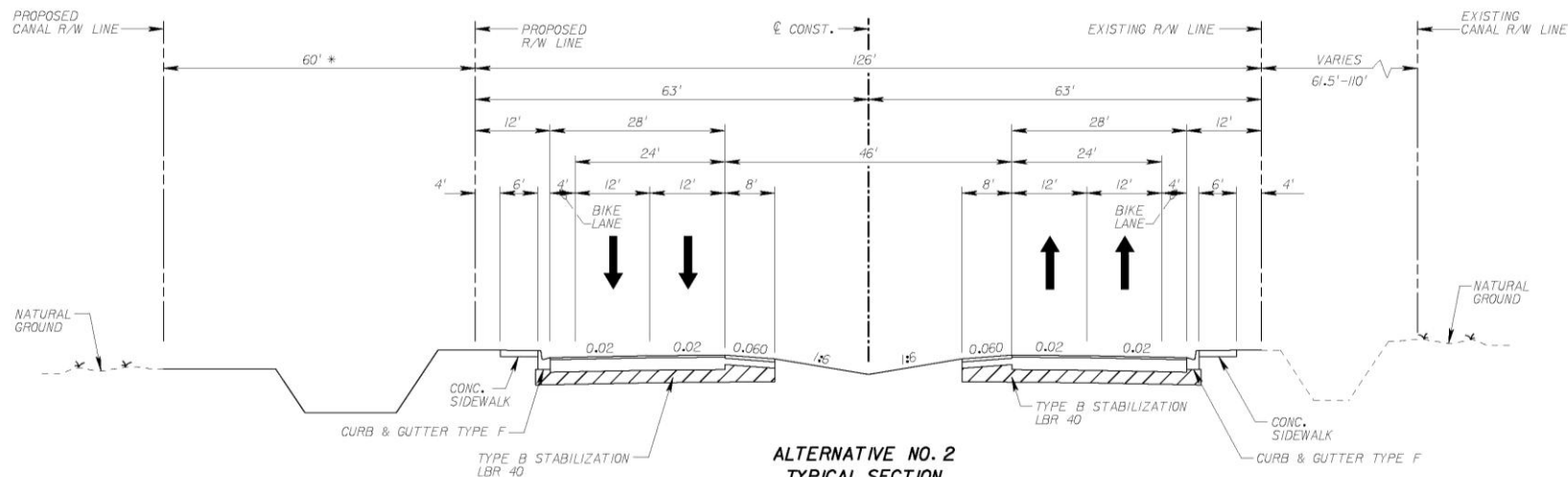
ALTERNATIVE NO. 1
TYPICAL SECTION
4-LANE DIVIDED SUBURBAN
FROM ORANGE AVENUE TO INDRIO ROAD
(DESIGN SPEED = 45)

* FURTHER ANALYSIS IS REQUIRED TO
DETERMINE EXACT DIMENSIONS





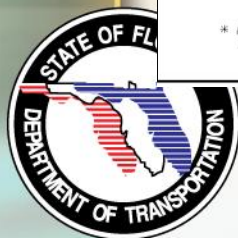
**EXISTING TYPICAL SECTION
FROM SR TO (OKEECHOBEE ROAD TO SR 614 (INDRIO ROAD))**

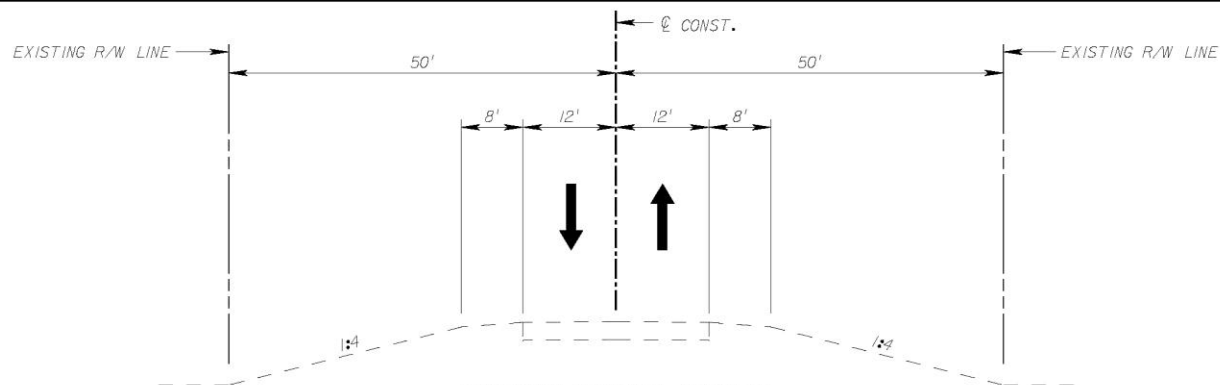


**ALTERNATIVE NO. 2
TYPICAL SECTION**

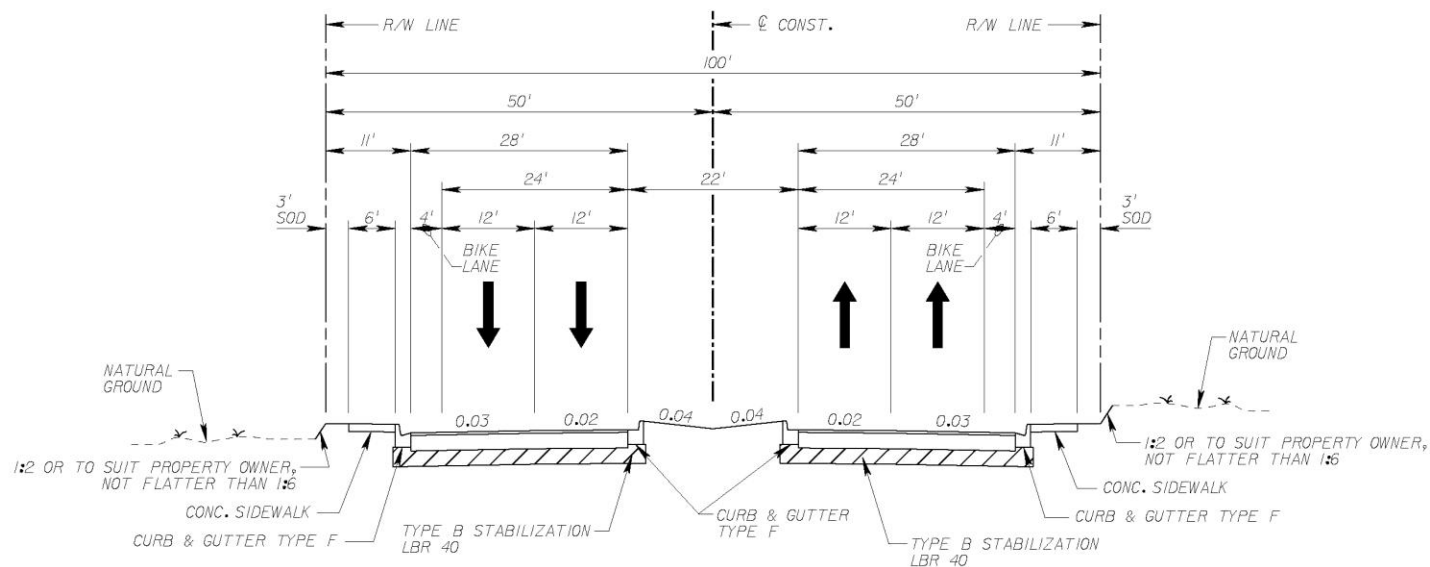
**4-LANE DIVIDED SUBURBAN
FROM ORANGE AVENUE TO INDRIIO ROAD
(DESIGN SPEED = 45)**

* FURTHER ANALYSIS IS REQUIRED TO
DETERMINE EXACT DIMENSIONS

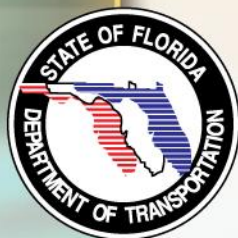




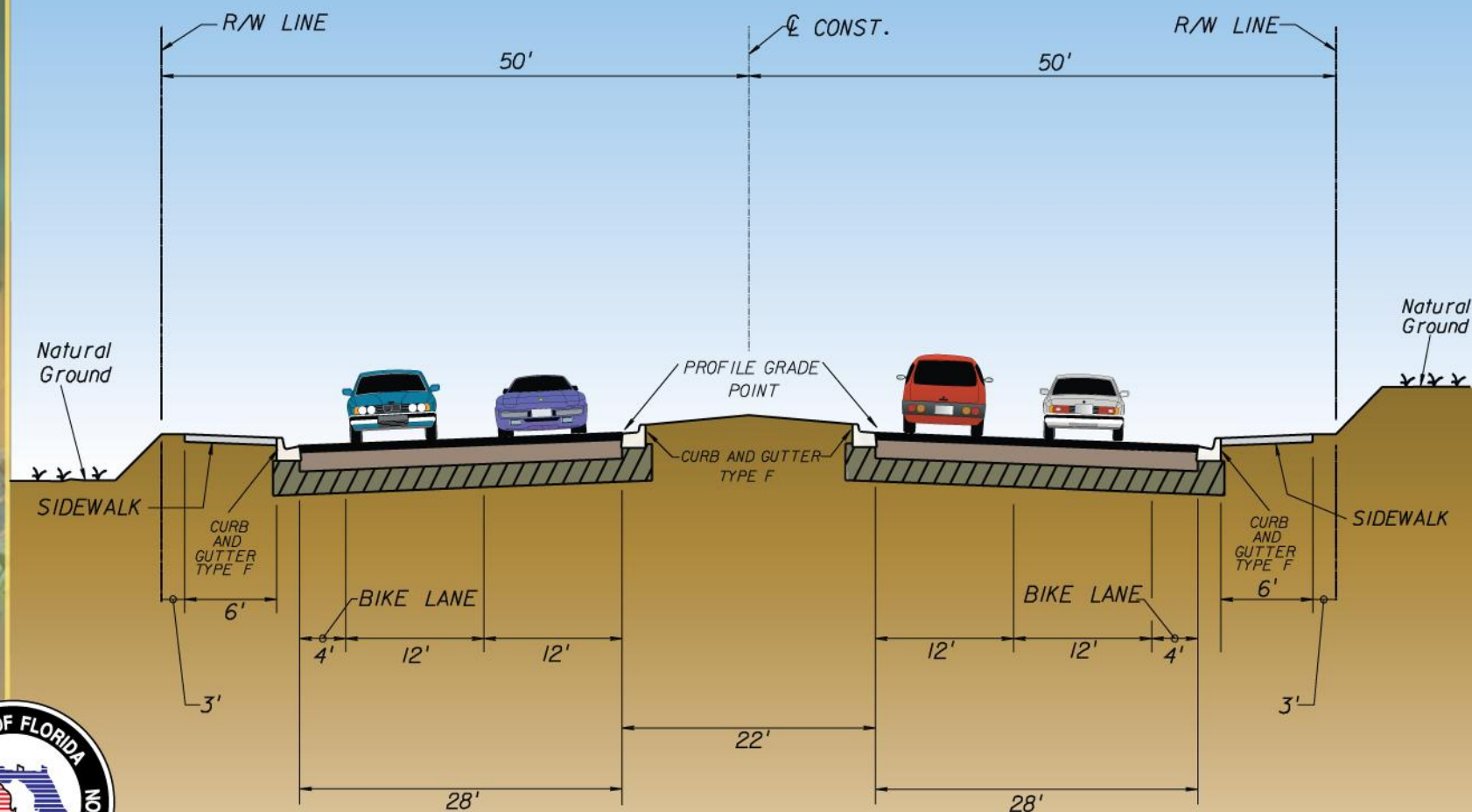
**EXISTING TYPICAL SECTION
SR 614 (INDRIO ROAD) TO SR 5 (US 1)**



**ALTERNATIVE NO. 3
TYPICAL SECTION
4-LANE DIVIDED URBAN
FROM INDRIO ROAD TO US 1 (SR 5)
(DESIGN SPEED = 45)**



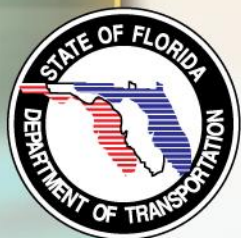
Proposed Kings Highway Typical Section 1994 Approved PD&E Study



From Indrio Road to US 1 (SR 5)

PD&E Study Components

- Public Involvement
- Engineering
- Environmental



Environmental

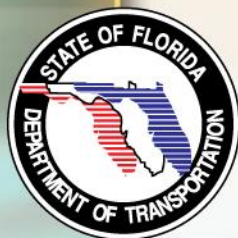
■ ETDM

- Programming Summary Completed July 2007
- ETAT – No involvement – Coastal and Marine and Infrastructure
- ETAT – Enhanced – Economic and Mobility
- ETAT – Minimal – Air, Farmlands, Navigation, Recreation, Section 4(f), Aesthetics and Social
- ETAT – Moderate – Contaminated sites, Floodplains, Special designations, Water Quality/Quantity, Wetlands, Wildlife, Cultural Resources, Land Use, Relocation and Secondary and Cumulative Effects



■ Data Collection and Analysis

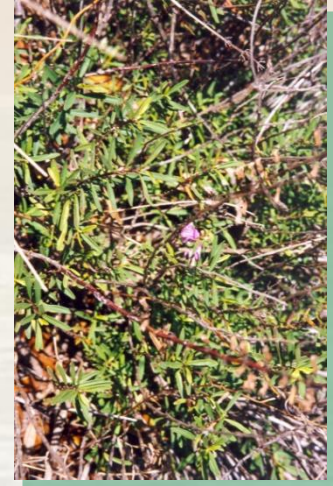
- Wetlands Evaluation – primarily freshwater marsh, wet prairie, agricultural ditches and water control canals
- Endangered Species Biological Assessment – surveys complete
- Noise Analysis – on-going
- Air Quality Analysis – To be completed following completion of traffic memorandum
- Contamination Screening Evaluation – Data collection complete
- Cultural Resource Assessment – on-going
- Section 4(f) Resources – No impacts identified
- Essential Fish Habitat – Not applicable – NMFS determined no further coordination required during ETDM Programming summary



Wildlife and Habitat

■ Listed Fauna Species

- Snail Kite, FL Scrub Jay, Wood Stork, Bald Eagle, Crested Caracara, Eastern Indigo Snake, American Alligator SE American Kestrel, Florida Pine Snake, Peregrine Falcon, Gopher tortoise, gopher frog, FL Mouse, limpkin, State Listed Wading Birds, FL Sandhill Crane, Osprey, Florida Burrowing Owl, Sherman's Fox Squirrel



■ Listed Plant Species

- Lakela's mint
- Fragrant prickly apple
- Large-flowered rosemary
- Nodding Pinweed

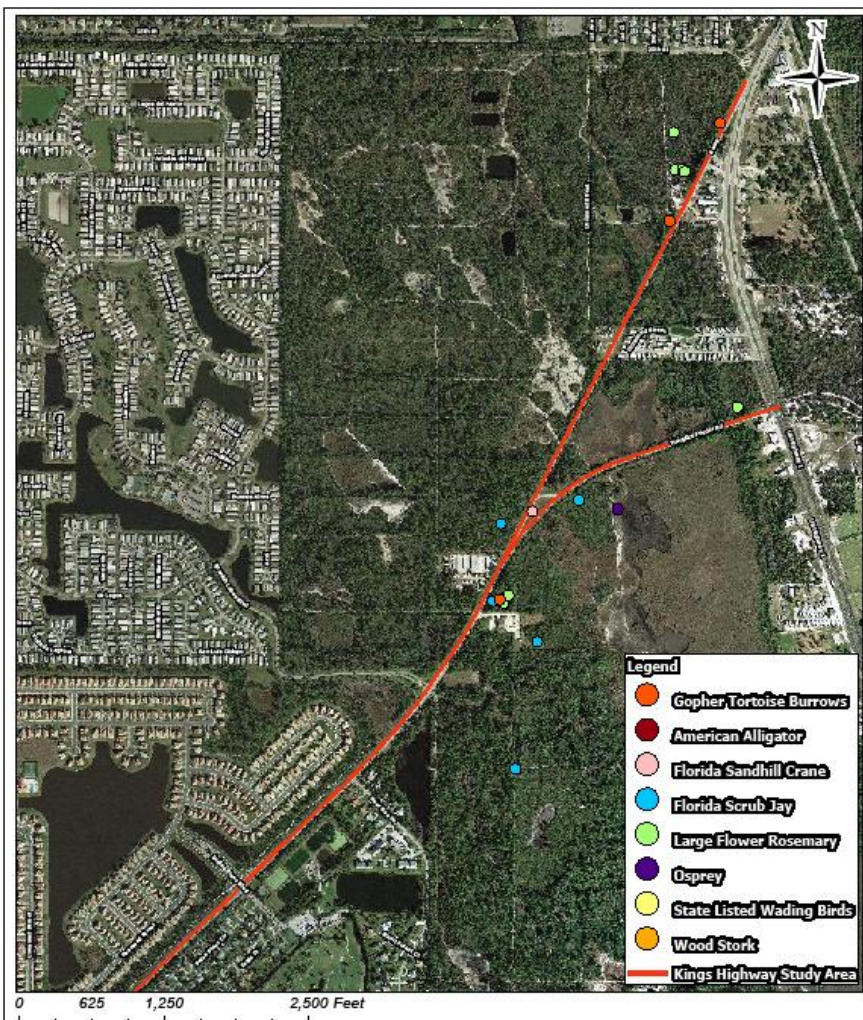


Wildlife and Habitat

■ Survey Results

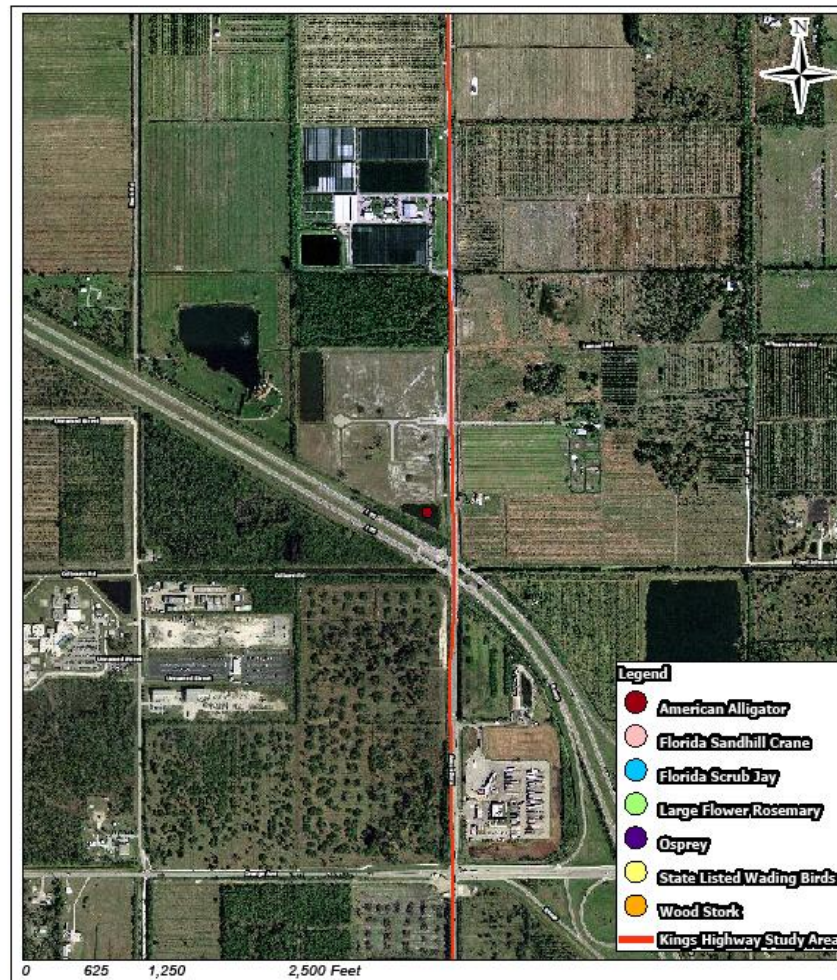
- Snail Kites observed but no nest
- Wading bird foraging but no nest
- FL Sandhill Cranes Forage but no nest
- FL Scrub Jay – Present adjacent to corridor
- Gopher Tortoise burrows identified
- Caracara potentially forage in corridor
- Large Flowered Rosemary Identified in study area





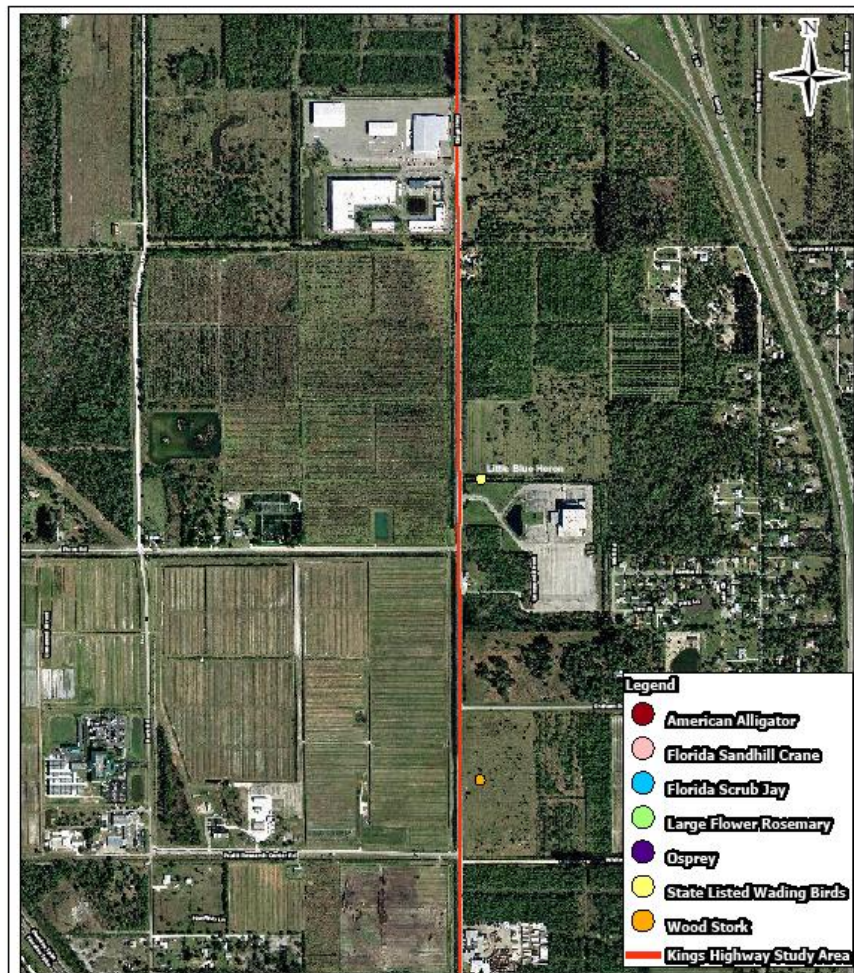
PRELIMINARY DRAFT SPECIES OBSERVATION MAP
KINGS HIGHWAY (SR 713)
ST. LUCIE COUNTY, FLORIDA
FPID #: 230256-5-22-01

SCALE: NTS PROJECT NUMBER: 40005398 OCTOBER 2008 FIGURE Xa



PRELIMINARY DRAFT SPECIES OBSERVATION MAP
KINGS HIGHWAY (SR 713)
ST. LUCIE COUNTY, FLORIDA
FPID #: 230256-5-22-01

SCALE: NTS PROJECT NUMBER: 40005398 OCTOBER 2008 FIGURE Xe



PRELIMINARY DRAFT SPECIES OBSERVATION MAP

KINGS HIGHWAY (SR 713)
ST. LUCIE COUNTY, FLORIDA
FPID #: 230256-5-22-01

SCALE: NTS PROJECT NUMBER: 40005398 OCTOBER 2008 FIGURE Xf



PRELIMINARY DRAFT SPECIES OBSERVATION MAP

KINGS HIGHWAY (SR 713)
ST. LUCIE COUNTY, FLORIDA
FPID #: 230256-5-22-01

SCALE: NTS PROJECT NUMBER: 40005398 OCTOBER 2008 FIGURE Xg

Wetland Evaluation

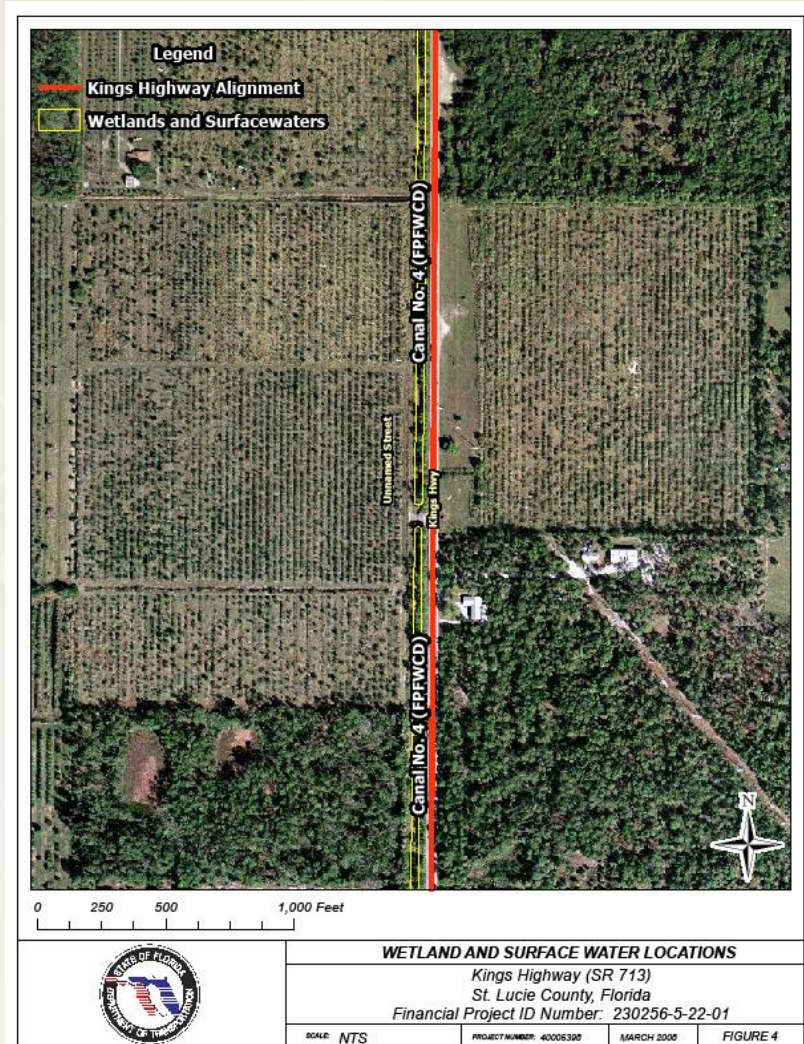
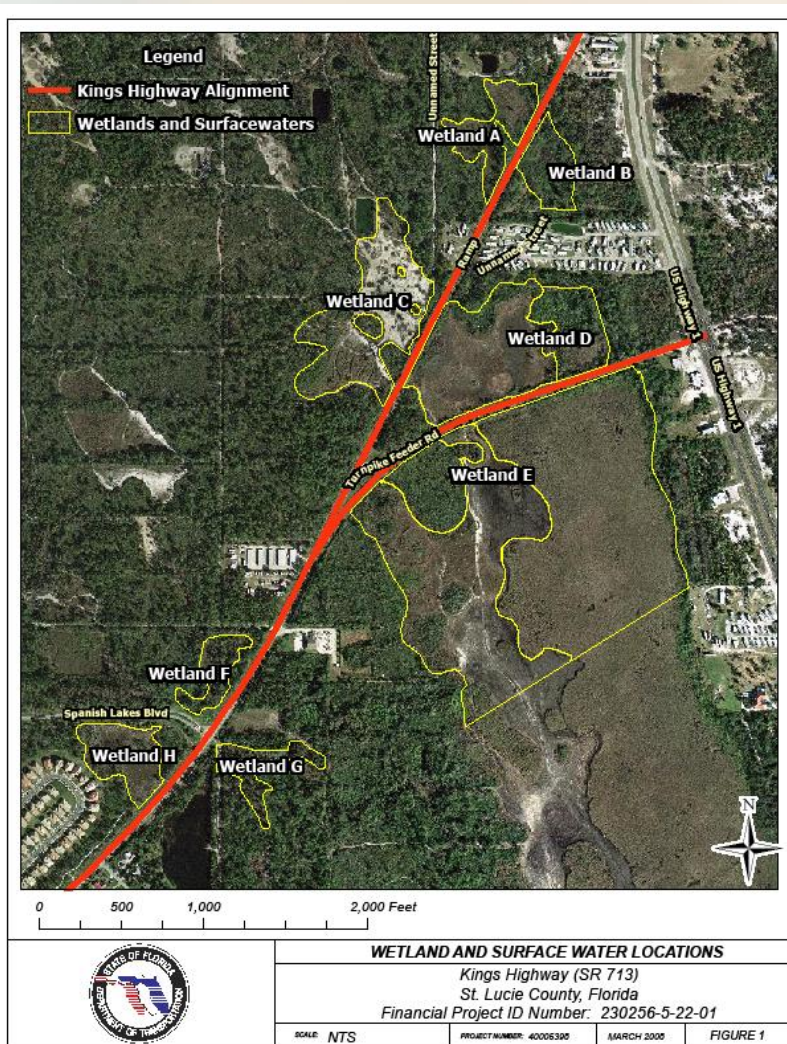
■ Wetlands

- Primarily Freshwater Marsh and Wet Prairies in Pastures – Moderate to Low Quality
- Evaluating Avoidance and Minimization considerations
- Impacts are similar for all alternatives and are anticipated to be minimal
- Evaluating Mitigation Alternatives

■ Surface Waters

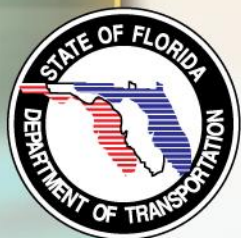
- Agricultural Ditches
- North St. Lucie Water Control District, Fort Pierce Farms Water Control District and South Florida Water Management District Canals

Wetland Evaluation

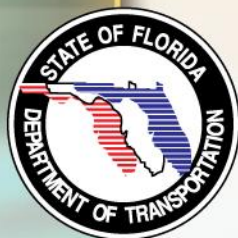
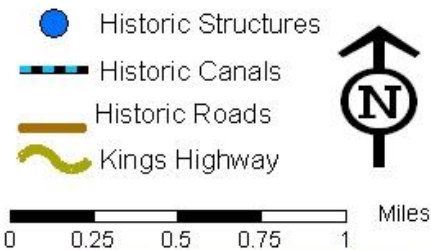


Cultural/Recreational Resources

- **Public lands**
 - Lakewood Park Recreational Trail, Capron Trail Park, Indrio North Savannas, Ten Mile Creek, Varn property – No impacts identified
- **Cultural resources**
 - Historic roads, canals, structures being evaluated
 - Cultural Resource Assessment Screening



Kings Highway: Map 1 of 3

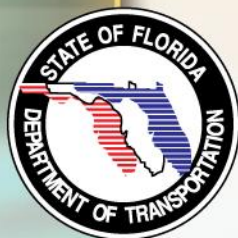
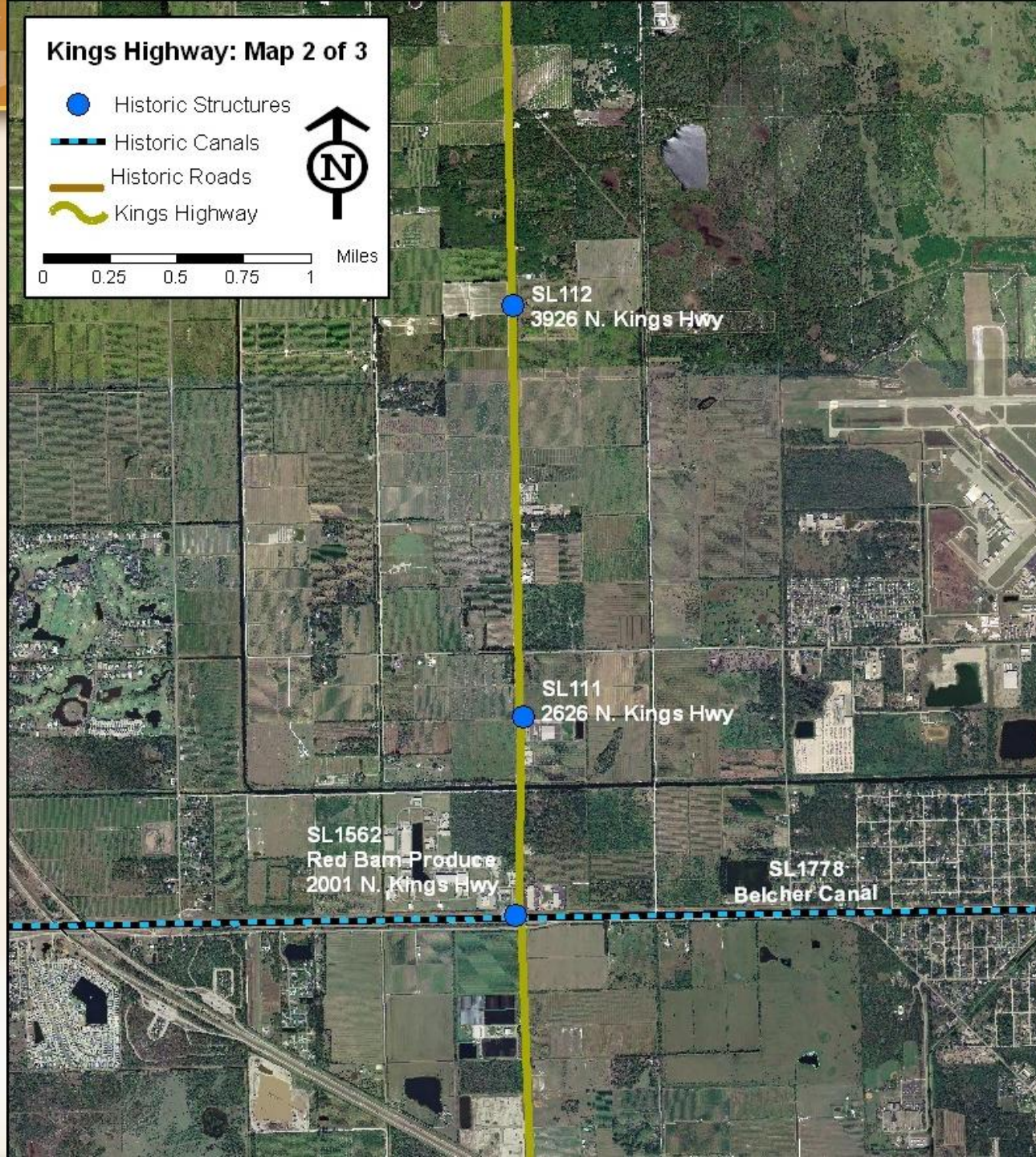


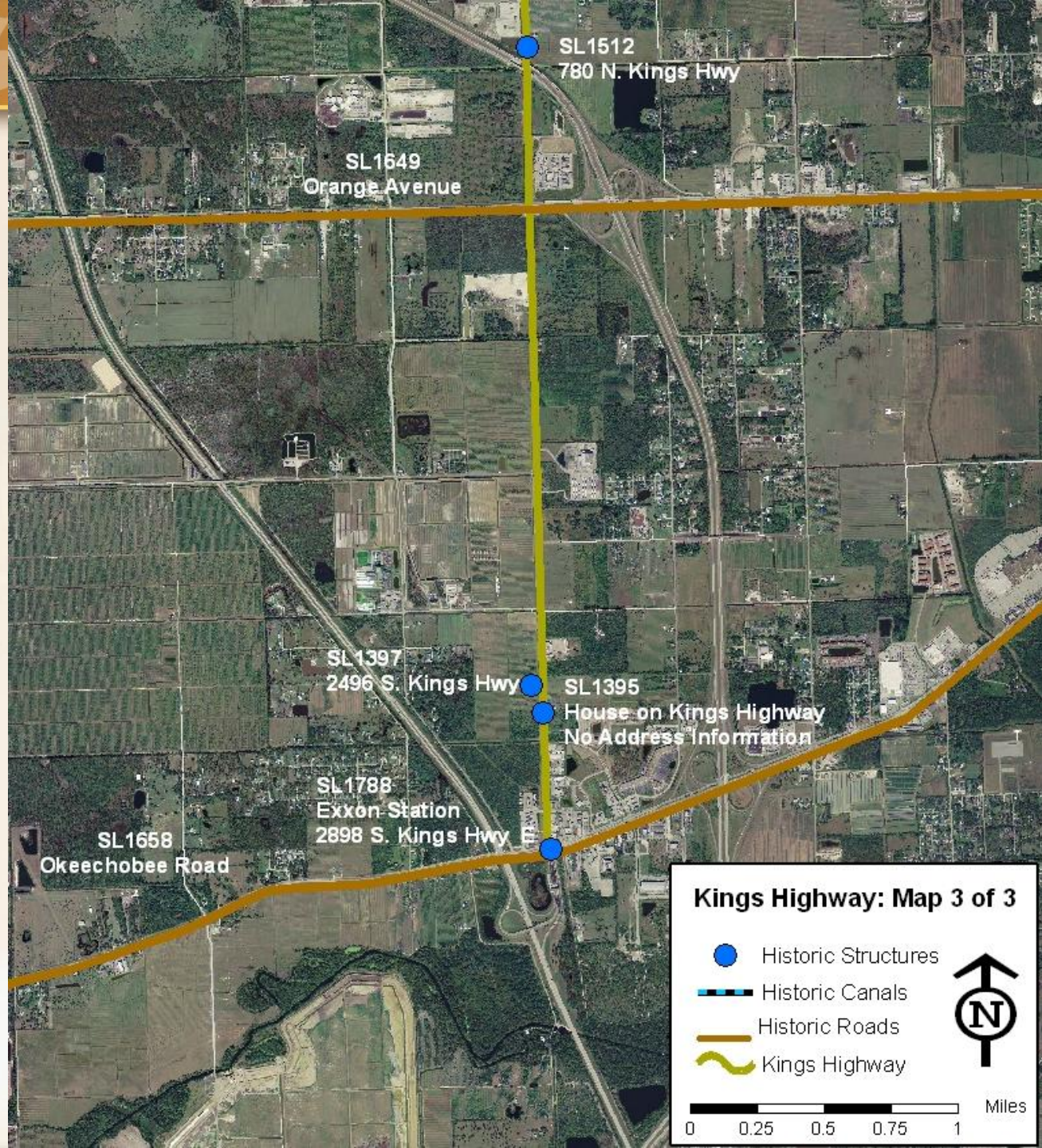
Kings Highway: Map 2 of 3

- Historic Structures
- Historic Canals
- Historic Roads
- Kings Highway



0 0.25 0.5 0.75 1 Miles





SL1649
Orange Avenue

SL1512
780 N. Kings Hwy



SL1397
2496 S. Kings Hwy

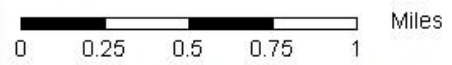
SL1395
House on Kings Highway
No Address Information

SL1788
Exxon Station
2898 S. Kings Hwy E

SL1658
Okeechobee Road

Kings Highway: Map 3 of 3

-  Historic Structures
-  Historic Canals
-  Historic Roads
-  Kings Highway









Contamination

- **Potential Contaminated Sites Identified**
 - Thirty -nine Sites being evaluated
 - Mostly associated with Gas Stations, Car Repair, Agricultural Areas and Citrus Packing Plants
 - Preliminary analysis indicates the following site risk
 - Seven No Risk
 - Nineteen Low Risk
 - Ten Medium Risk
 - Three High Risk
 - High Risk Sites are related to Leaking Underground Storage Tanks



PROJECT SCHEDULE

ACTIVITY	2008	2009	2010	2011	2012	2013
PD&E Study						
Public Involvement	   					
Design						

The schedule shown above is for the Kings Highway (SR 713) PD&E and Design phases. The schedule is subject to change as the project progresses. The PD&E Study is the only phase of the project that is currently funded in the St. Lucie LRTP.

LEGEND:



- Kickoff Meeting
July 2008



- Alternatives Public Meeting
Summer 2009



- Public Hearing
Winter 2011



Contact Information

Edith Waters

FDOT Project Manager

FDOT District 4

3400 West Commercial Boulevard

Fort Lauderdale, Florida 33309-3421

(954) 777-4319

Toll Free (866) 336-8435 extension 4319

edith.waters@dot.state.fl.us

Paul Cherry

Consultant Project Manager

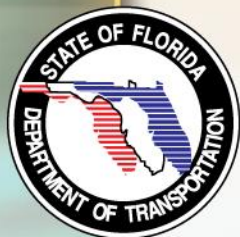
Kimley-Horn and Associates, Inc.

4431 Embarcadero Drive

West Palm Beach, FL 33407

(561) 494-0456

paul.cherry@kimley-horn.com



COMMENTS



THANK YOU

