

Replacing Historic Bridges

ETAT Coordination Workshop

May 27, 2009

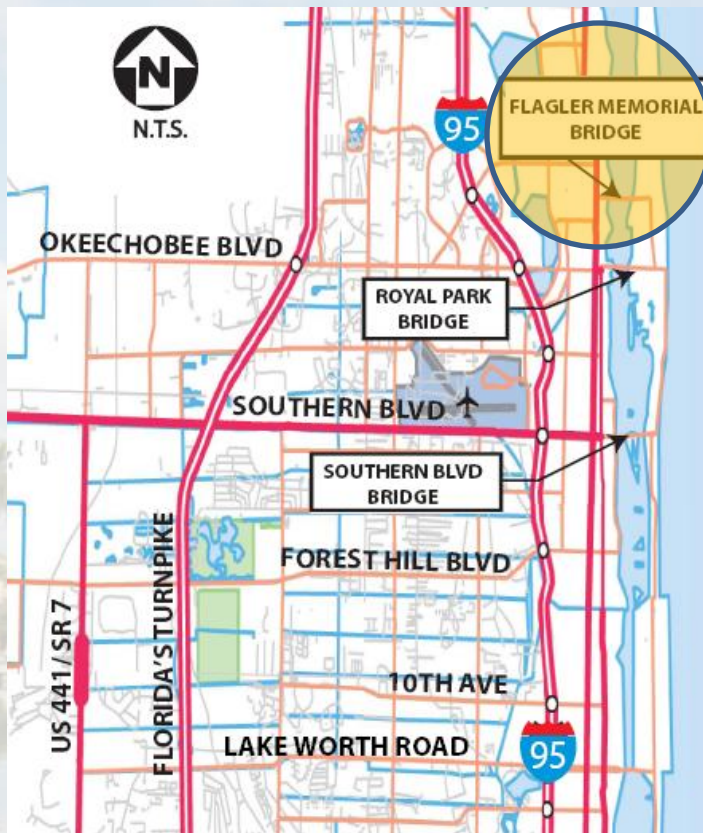


Outline

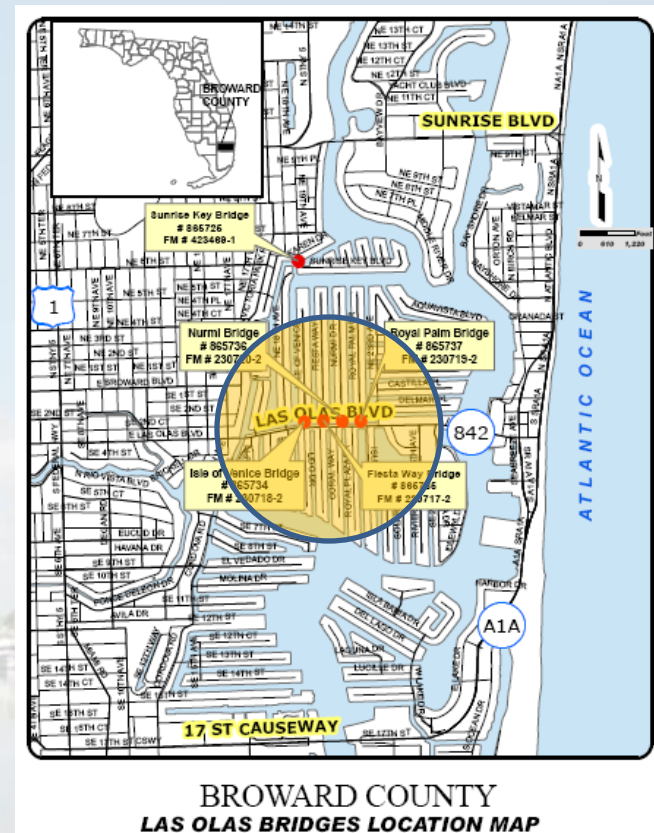
- Bridge Replacement Criteria – safety first
- Lessons in Section 106 & 4(f))
 - CRC, SHPO, USCG, FHWA coordination
 - ETAT preparation, up-front research
- Project History
- COA Determination
- Continued ETAT coordination

Recent PD&E Projects

Flagler Memorial Bridge:
Palm Beach County



Bridges of the Isles:
Broward County



Historic Preservation: Federal Requirements

Section 106

- National Historic Preservation Act
- National Register of Historic Places eligibility
 - Both bridge projects determined eligible for listing on National Register
- Consultation Procedural Requirement

Section 4(f)

- U.S. Dept. of Transportation Act
 - Recreation lands
 - Wildlife and Waterfowl refuges
 - Historic Sites in Transportation project development
- Approval required from Federal Agency, if applicable

Project History:

Flagler Memorial Bridge

- ETDM Programming Screening Jan-Mar 2005
- FDOT update SHPO CRAS
(1994 Rehab Project)
- Teleconferences with FDOT, SHPO, USCG & FHWA
- Screening Report Finalized May 2005
(COA Determination contingent upon Section 106 Consultation)

Project History:

Flagler Memorial Bridge

- What are your alternatives when the bridge is Structurally Deficient and Functionally Obsolete?
- Continued coordination with ETAT partners
- CRC meetings with all stakeholders



Section 106 Regulations Flow Chart

Initiate Section 106 Process

Establish undertaking
Identify appropriate SHPO/THPO *
Plan to involve the public
Identify other consulting parties

► *No undertaking/no potential to cause effects*

▼
Undertaking is type that might affect historic properties
▼

Identify Historic Properties

Determine scope of efforts
Identify impacts to historic properties
Evaluate historic significance

► *No historic properties affected*

▼
Historic properties are affected
▼

Assess Adverse Effects

Apply criteria of adverse effect

► *No historic properties adversely affected*

▼
Historic properties are adversely affected
▼

Resolve Adverse Effects

Continue consultation

► *Memorandum of Agreement*

▼
FAILURE TO AGREE
▼

► **COUNCIL COMMENT**

Project History:

Bridges of the Isles

- Update to Previous Cultural Resource Studies on file (1997 and 2000 reports)
- Changes to area since 2000
 - Joint Site Visit
 - Additional documentation on the context of current project



ETDM Screening: Bridges of the Isles

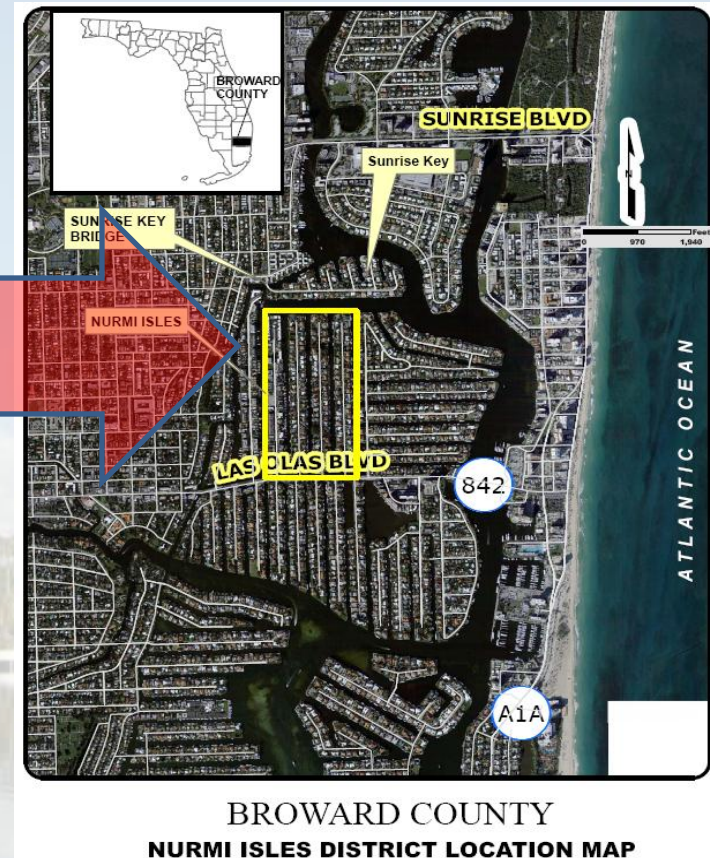
- ETDM Program Screen April-June 2007
- Follow up information requested by SHPO
- FDOT updated information on file
(1997 and 2000)
- Site visit with FDOT, SHPO, FHWA
- Screening Report Finalized October 2007
(with Class of Action Determination)

ETDM Screening

- Benefit from early comments
- Began coordination planning
 - Provided Additional Information on ETDM comments of high concern
 - Field trip to discuss project history and present conditions

Continued ETAT Coordination

How do you determine a Historic District?



Continued ETAT Coordination

- Cultural Resource Committee: Section 106 Historic Preservation Consultation
(Kick-off Thursday, May 28)
- SHPO and FHWA direct involvement with Section 106 consultation and potential Section 4(f) effects

BUILD A BETTER PLACE