

Where We Are, Where We're Going, and What to Look Out For Along the Way

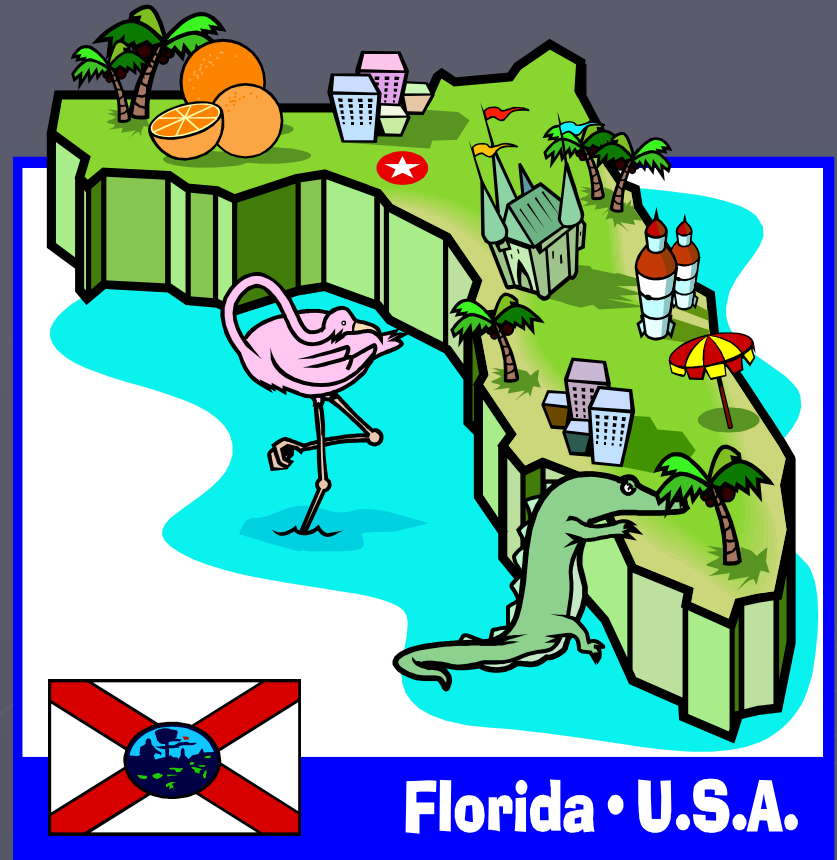


FHWA Perspective of Our Current
Environmental Processes

By Cathy Kendall, AICP

Where We Are

- ▶ SAFETEA-LU
- ▶ ETDM
- ▶ NEPA
- ▶ Econ. Stimulus/ARRA



Where We're Going



► Life After SAFETEA-LU

- It expires 9/30/09!
- What's next ?

► Economic Stimulus/ARRA

- FL getting \$1.35 B for Highways & Bridges*

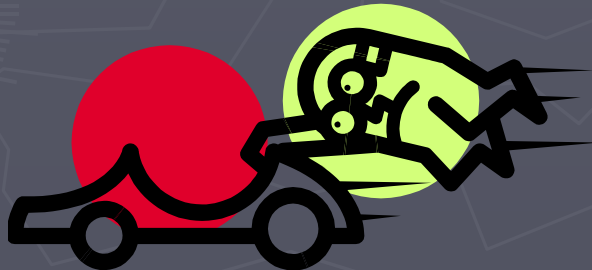


Where We're Going



- ▶ What's the rush for ARRA projects?
 - 50% of funds must be obligated by 6/29/09.*
 - 100% of funds must be obligated by 2/16/10.

We use it or lose it! (\$1.35B)





Mile Markers in our Process

- ▶ Volume of large/complex projects
 - 13 EIS' and
 - 19 EAs
- ▶ Review Times – Our goal remains 30 days
- ▶ DeMinimis Tracking – just 7, so far

Mile Markers in our Process



- ▶ 2006 ETDM Gallop Poll
- ▶ Annual ETDM Agency Surveys
- ▶ ETDM Agreements
- ▶ Process Reviews (CE, 106, Noise walls)

Mile Markers in our Process



► ARRA Expenditures

Website below has the current status for Florida on ARRA projects, including lists of State and local projects to be funded.

<http://www.dot.state.fl.us/planning/economicstimulus/>

What to Look Out For Along the Way



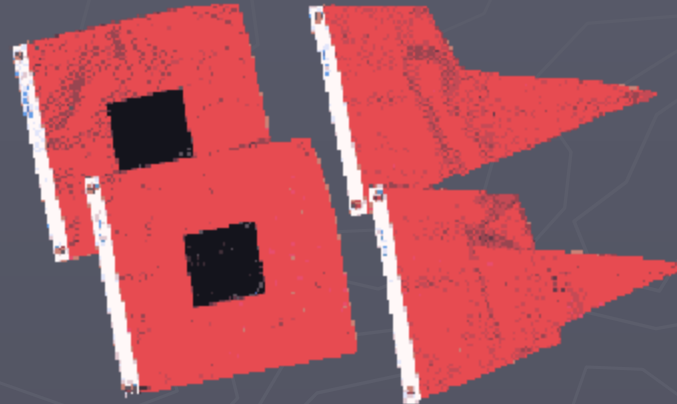
Some Top Risk Areas for FHWA-FL

- ▶ Lack of sufficient early coordination on local projects that become federalized.
 - Early decisions without agency input
 - Improper advance R-O-W acquisition
 - Control of NEPA products by private interests



What to Look Out For Along the Way

- ▶ ETDM Survey Results
- ▶ Emergency Situations
- ▶ Litigation



What to Look Out For Along the Way

- ▶ Funding shortfalls with SAFETEA-LU Extensions without new funding sources
- ▶ Changing Legislation



Thanks for being part of our Road Trip!

Cathy Kendall, AICP
FHWA FL Division
Cathy.kendall@dot.gov



Presentation for the May 27, 2009 D4/D6 ETAT Workshop