

C.R. 609
Planning & Conceptual Engineering
(PACE) Study



Joint ETAT Coordination Workshop
May 27, 2009



Project Team

Min-Tang Li, Ph.D., P.E. -FDOT – District 4

Mike Ciscar, P.E. – The Corradino Group – Project Principal

Michael Colucci, P.E. – The Corradino Group –Project Manager

Karen Trujillo – URS – Environmental Manager



Introduction / ETDM Process

- **Conducting Planning Screen**
- **Project loaded onto Environmental Screening Tool (EST)**
- **Sociocultural Effects Evaluation (SCE)**
- **ETAT Review**
- **Planning Screen Summary Report**
- **Incorporate results into the PACE Study**

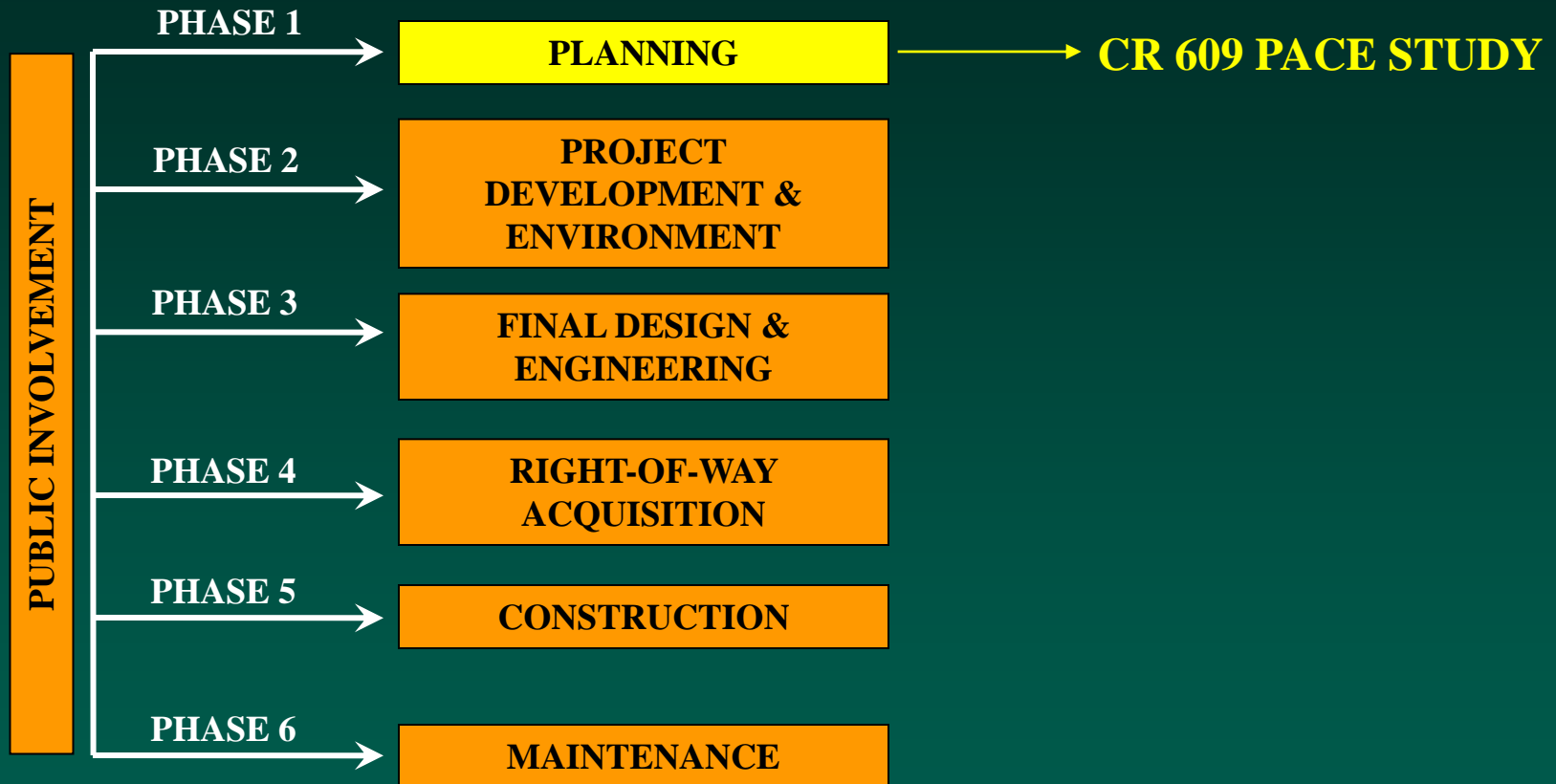


CR 609 PACE Study Objectives

- **Identify and develop a preferred alignment that meets the anticipated travel demands and has the support from the local agencies and elected officials**
- **Identify any potential environmental impacts**
- **Identify ROW needs**
- **Include the project on all the transportation plans**
- **Identify potential funding**

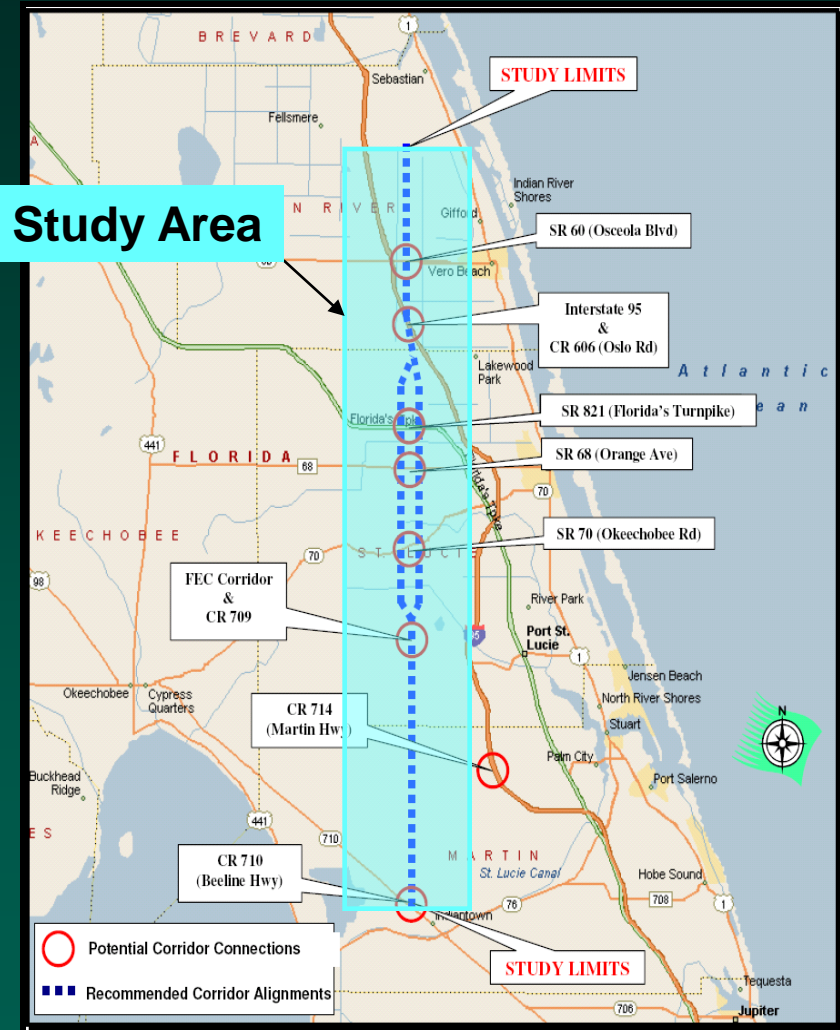


Project Phases





Project Location Map



- **FDOT CR 609 alignment from 1995 study**
- **Originating at CR609/SR710 moving northward for approximately 50 miles and ending at CR510 (Wabasso Road) in Indian River County**

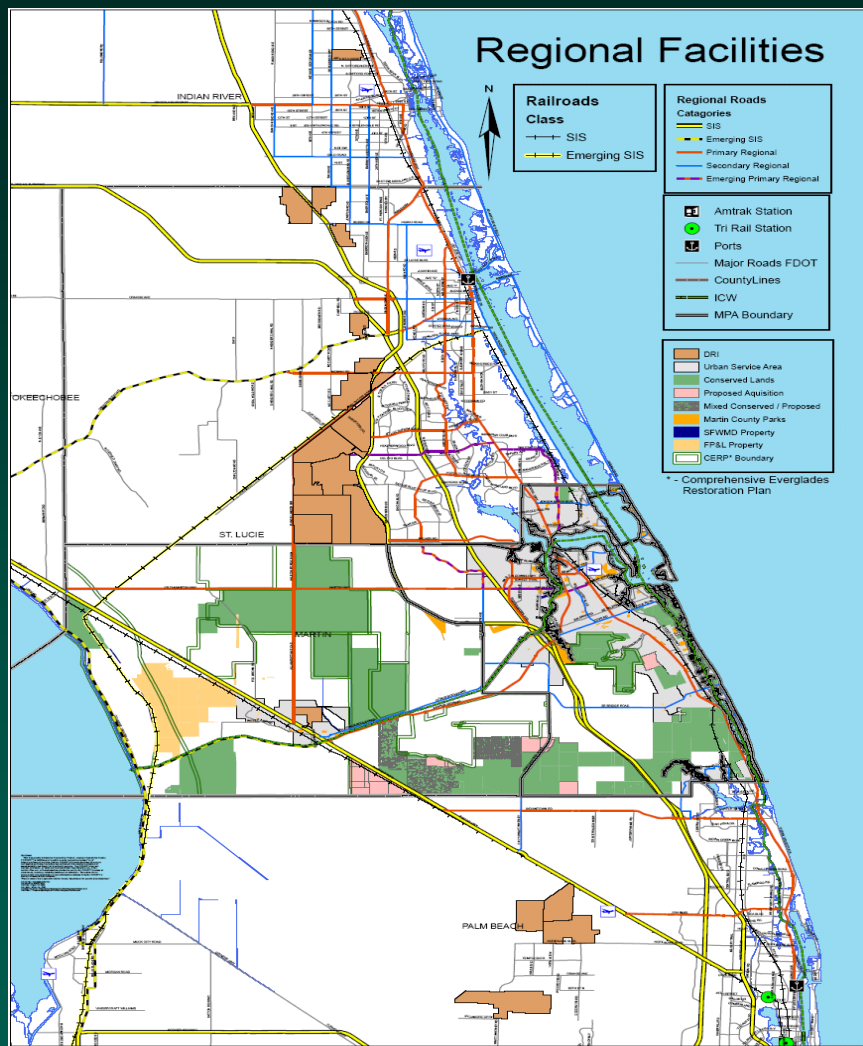


Regional Considerations

- **St. Lucie & Indian River County Joint Meeting**
 - *Future N/S Inter-county Transportation Corridors Highlighted*
- **St. Lucie & Martin MPO Joint Meeting**
 - *Future cross-county connections*
- **Destination 2030 Regional Long Range Transportation Plan**
 - *Underscores need for N/S Regional Transportation Corridor*
- **Martin MPO Project Priorities for FY 05/06 & FY 06/07**
 - *Improve capacity of CR 609 and alternative N/S corridor*
 - *Consideration of CR 609 as an emerging SIS Facility*
- **Indian River County MPO Project Priorities**
 - *Improvements to 82 Avenue North of 26th Street*



Martin County Project Considerations

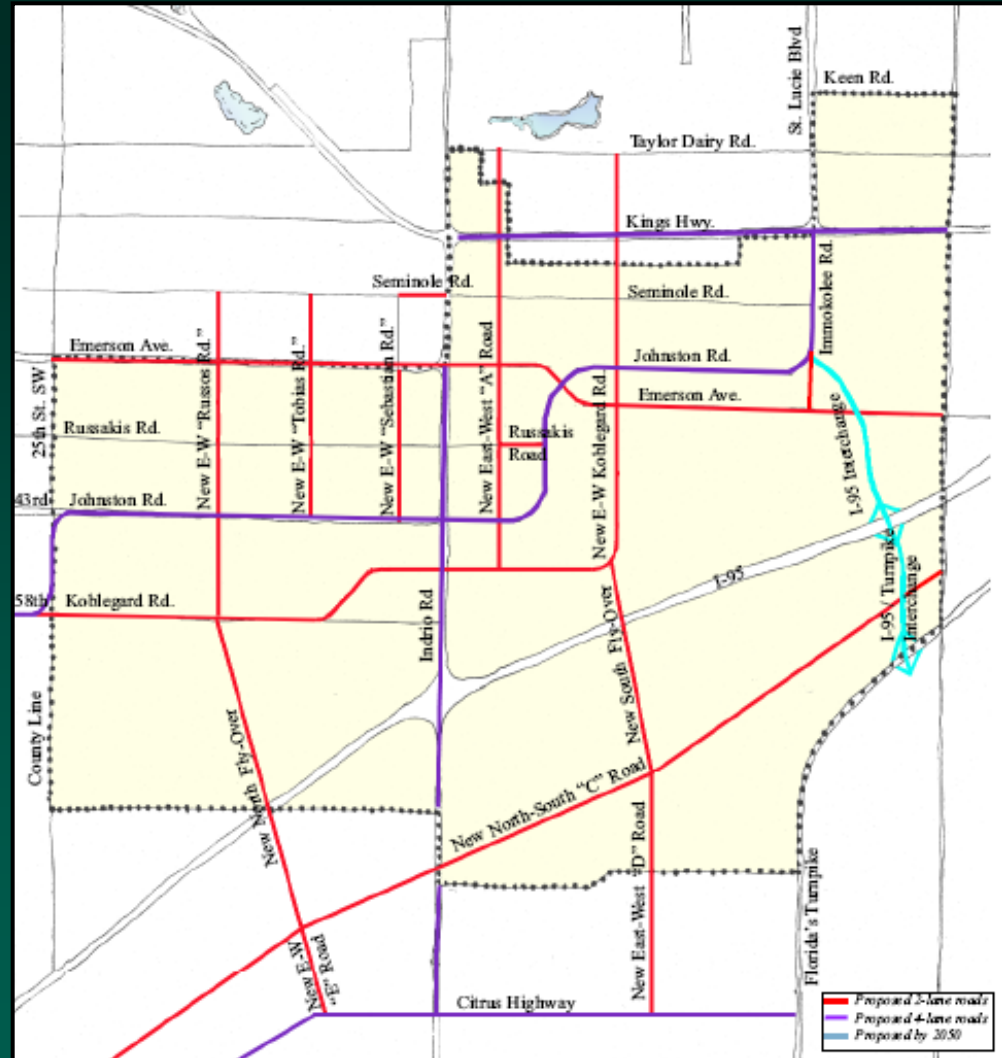


- ✓ **Coordinate information from SR 710 PD&E**
- ✓ **Impacts of growth North of Martin County**
- ✓ **Access management and retention of open space to continue county's philosophy to preserve land**
- ✓ **Indiantown DRI on South CR 609 at SR 710/Warfield Blvd.**
- ✓ **Connectivity to CR 714/Martin Highway**
- ✓ **Indiantown CRA**



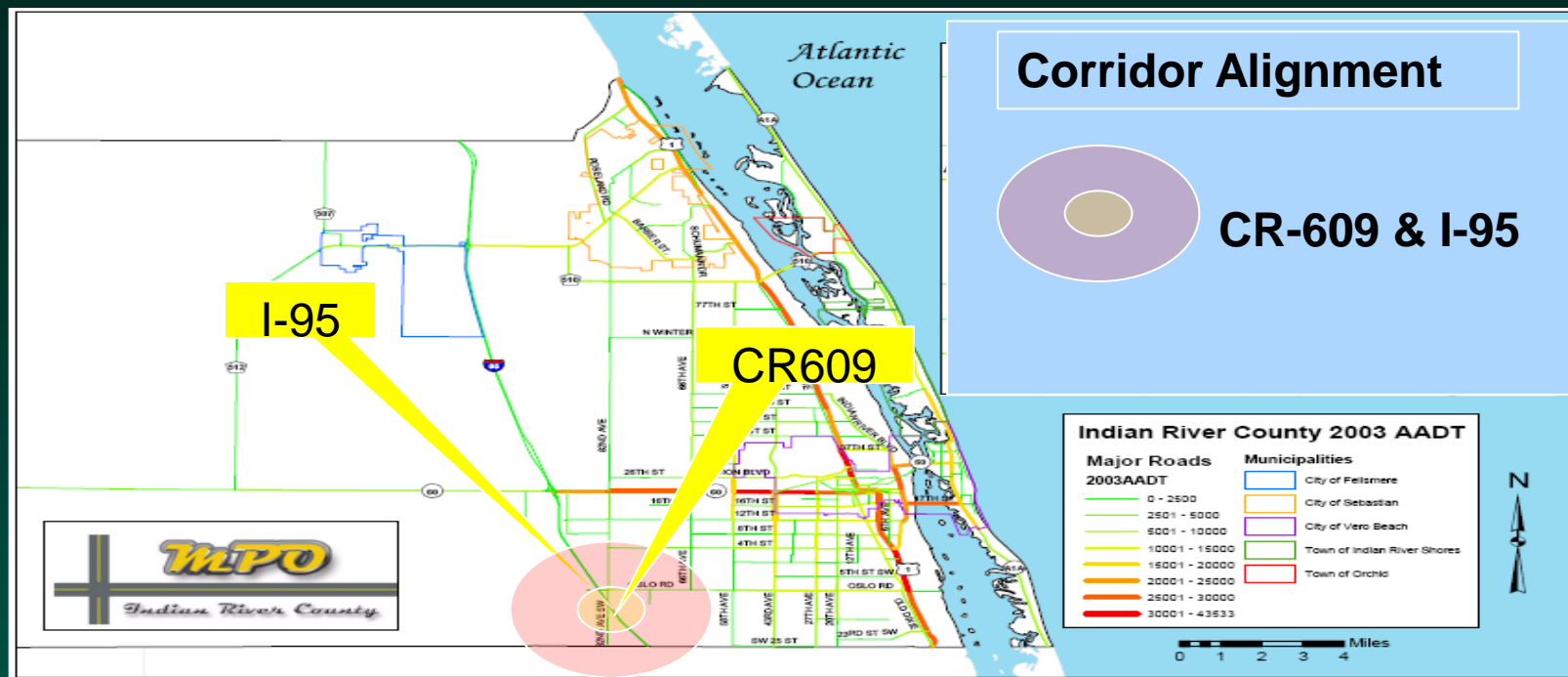
St. Lucie County Project Considerations

- ✓ **Future Growth**
- ✓ **St. Lucie County Research Park**
- ✓ **Crosstown Parkway**
- ✓ **Corridor alignment with Florida Turnpike**
- ✓ **Evaluation of grade separated crossing**
- ✓ **Traverses FEC Rail Road and major roads including Okeechobee Road and SR-68/Orange Ave**
- ✓ **St. Johns Marsh**
- ✓ **2030 estimated population over 400,000**





Indian River County Project Considerations



- ✓ Alignment at the south end of the County as it intersects with I-95
- ✓ Evaluation of a grade separated crossing
- ✓ Traverses other major corridors including: SR-60/Osceola Blvd;
- ✓ CR-606/Oslo Road
- ✓ Cross County Connections & Regional Growth



Environmental Data Collection

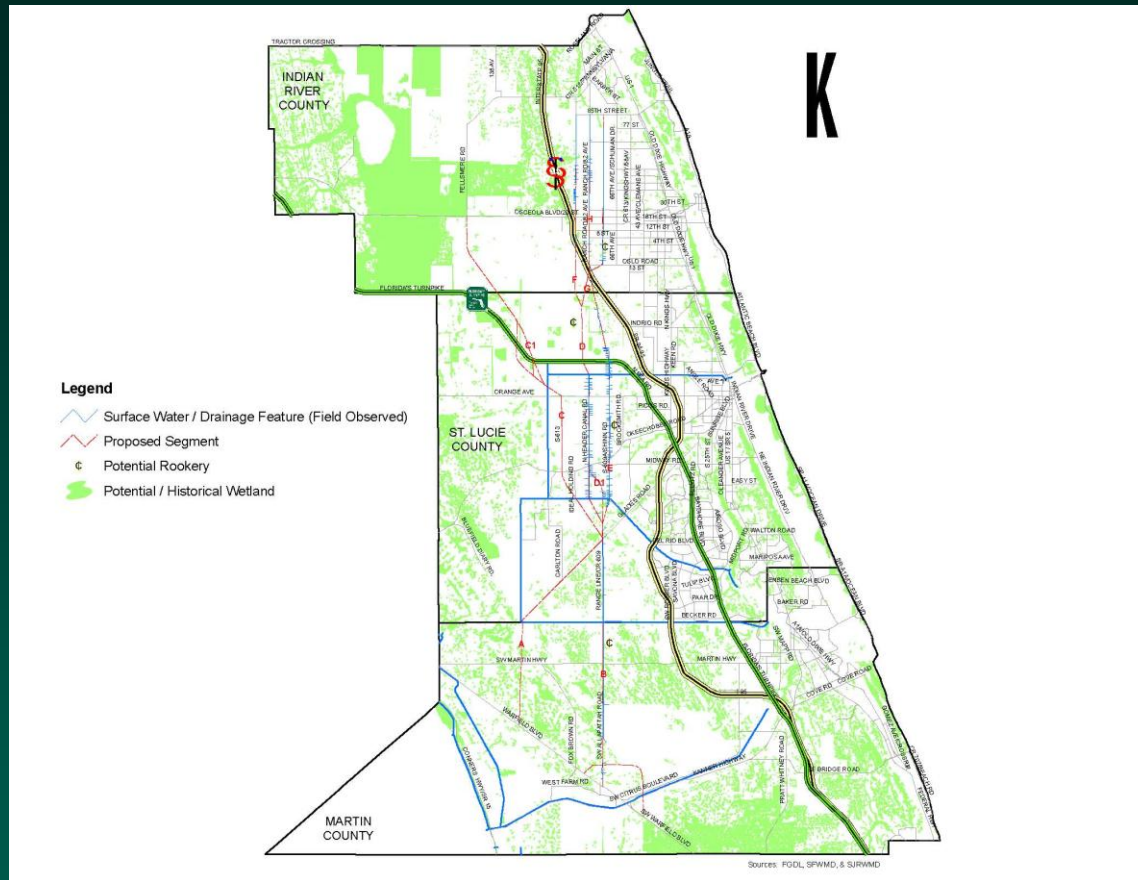
- **Wetlands/Surface Waters**
- **Threatened and Endangered Species**
- **Cultural Resources**
- **Air Quality**
- **Noise**





Environmental Update

- **Ground Truthing**
 - *Martin County*
 - *St Lucie County*
 - *Indian River County*





Environmental Update

- **Ground Truthing**
 - *Fewer Wetlands*
 - *More Canals and Ditches*
 - *Some Wildlife Observed*
 - *Very few noise receptors*





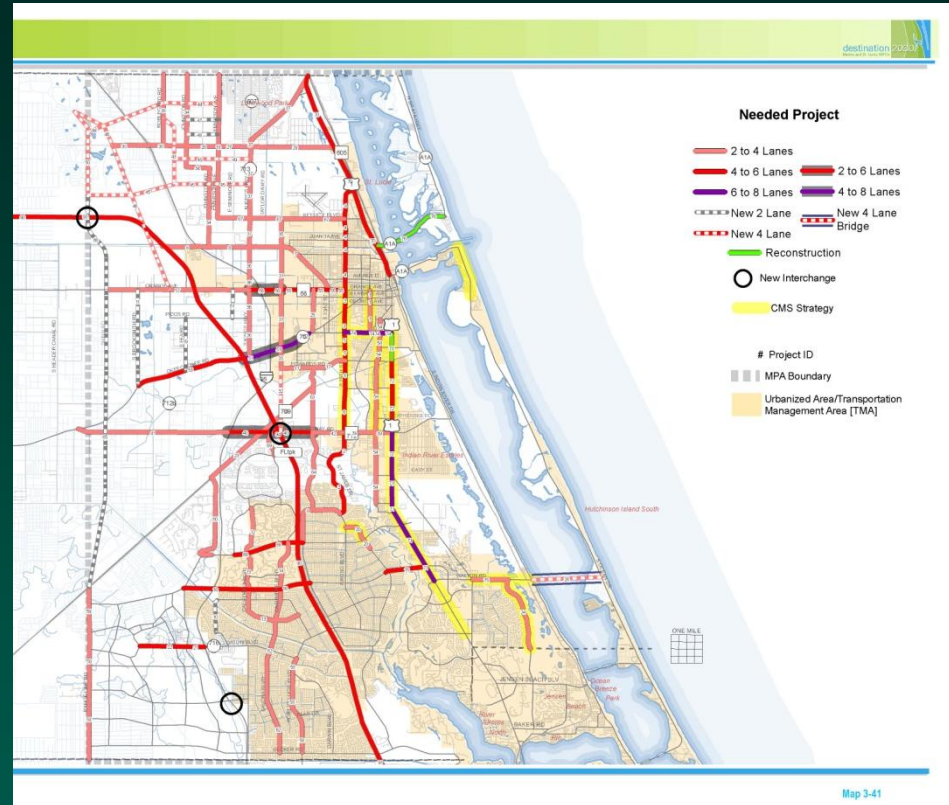
Sociocultural Effects (SCE) Evaluations

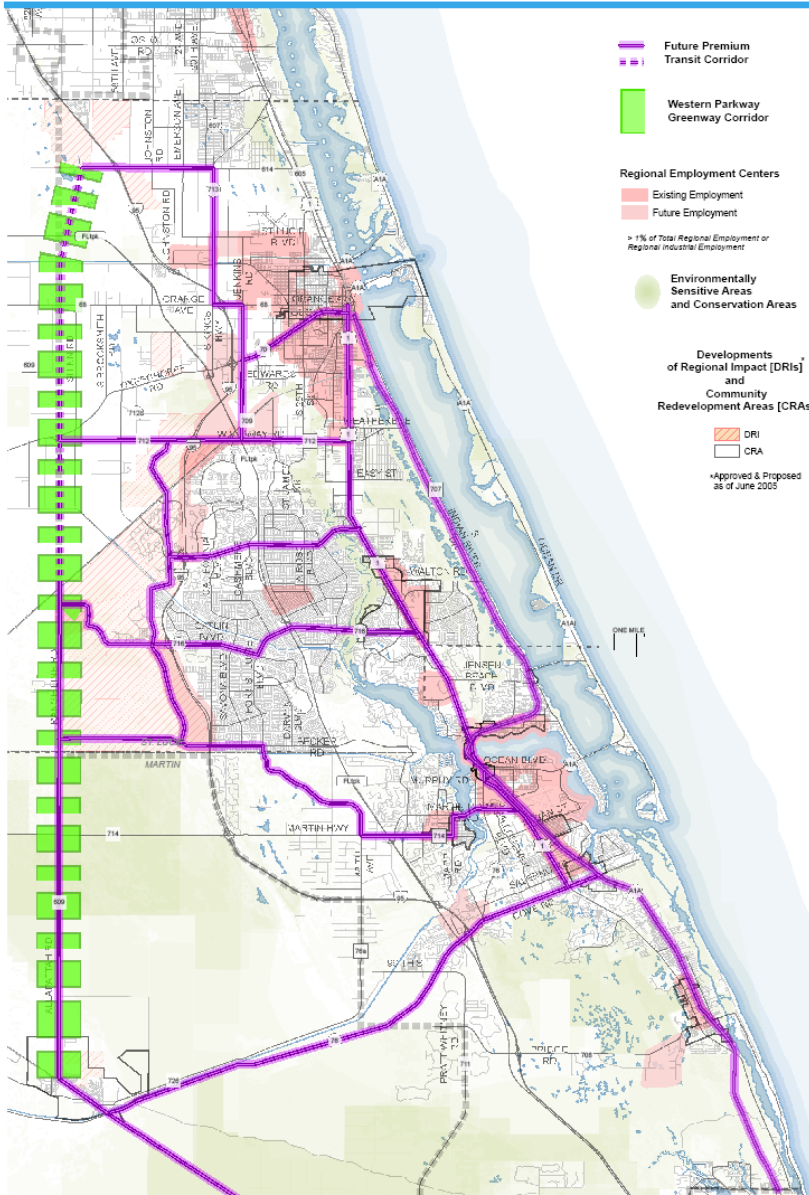
SOCIAL	ECONOMIC	LAND USE	MOBILITY	AESTHETICS	RELOCATION
<ul style="list-style-type: none"> • Quality of Life • Community Cohesion • Community Goals • Changes in Demographics <ul style="list-style-type: none"> • Population • Employment • Income • Age/Sex • Education • Occupancy • Ethnicity • Housing Units without a vehicle 	<ul style="list-style-type: none"> • Effect on Businesses • Regional Employment • Travel Patterns • Traffic Levels • Business Visibility • Special Needs Patrons • Tax Base 	<ul style="list-style-type: none"> • Consistency with Future Land Use Plan • Character of Land Use • Urban Form/Context • Effect on Open Space • Potential for Sprawl 	<ul style="list-style-type: none"> • Accessibility <ul style="list-style-type: none"> • Pedestrian/Bicycle • Transit • Vehicles • Transportation Disadvantaged • Connectivity <ul style="list-style-type: none"> • Intermodal Facilities • Land Use • Traffic Patterns • Freight Movement • Public Parking • Emergency Facilities/Evacuation • Safety 	<ul style="list-style-type: none"> • Noise • Vibration • Proximity to Community Focal Points • Community Aesthetic Compatibility • Landscaping 	<ul style="list-style-type: none"> • Residential Parcels • Business Parcels • Public Facilities



Project Need

- Review and update of demographic and socioeconomic data
- Regional north/south multimodal corridor to help relieve traffic on other major corridors
- Consistency with plans and future projections of local agencies





Project Need

- **Martin & St. Lucie Destination 2030 Regional Long Range Transportation Plan**



Alignment Alternative Research Tool (AART)

- Previously known as the Corridor Analysis Tool (CAT) which was used for the statewide new corridors initiative
- Identifies Criteria for Corridor Planning Evaluation
 - *Mobility and Connectivity*
 - *Economic Competitiveness*
 - *Environmental Stewardship*
 - *Community Livability*
- Identifies corridor of least impact
- Quantifies corridor impacts
- Facilitates comparison of multiple corridors
- Uses standard GIS data





Alignment Alternative Research Tool (AART)

- **Workshops**
- **Gathered county data and criteria rankings**

*Environmental
Criteria*

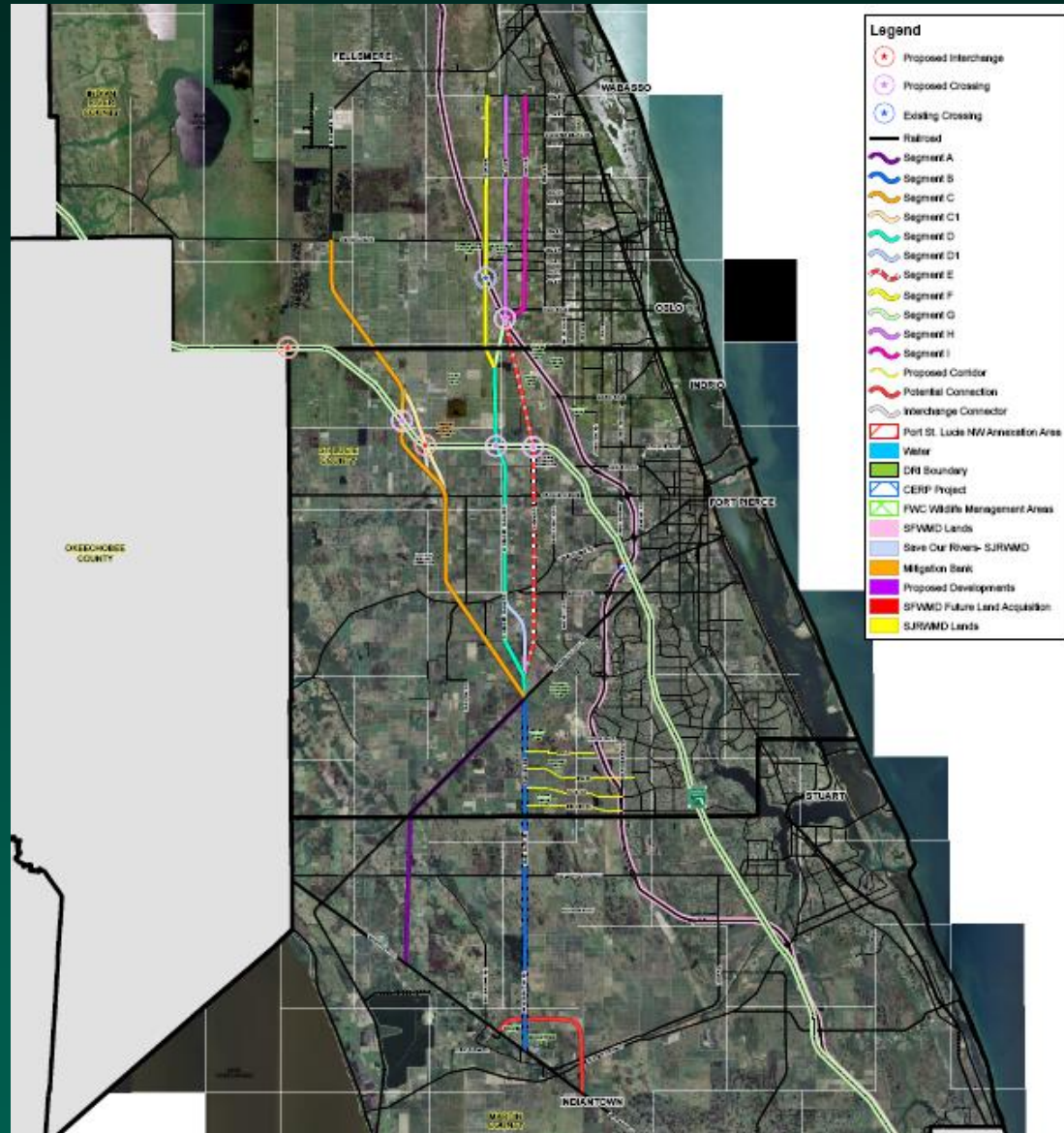


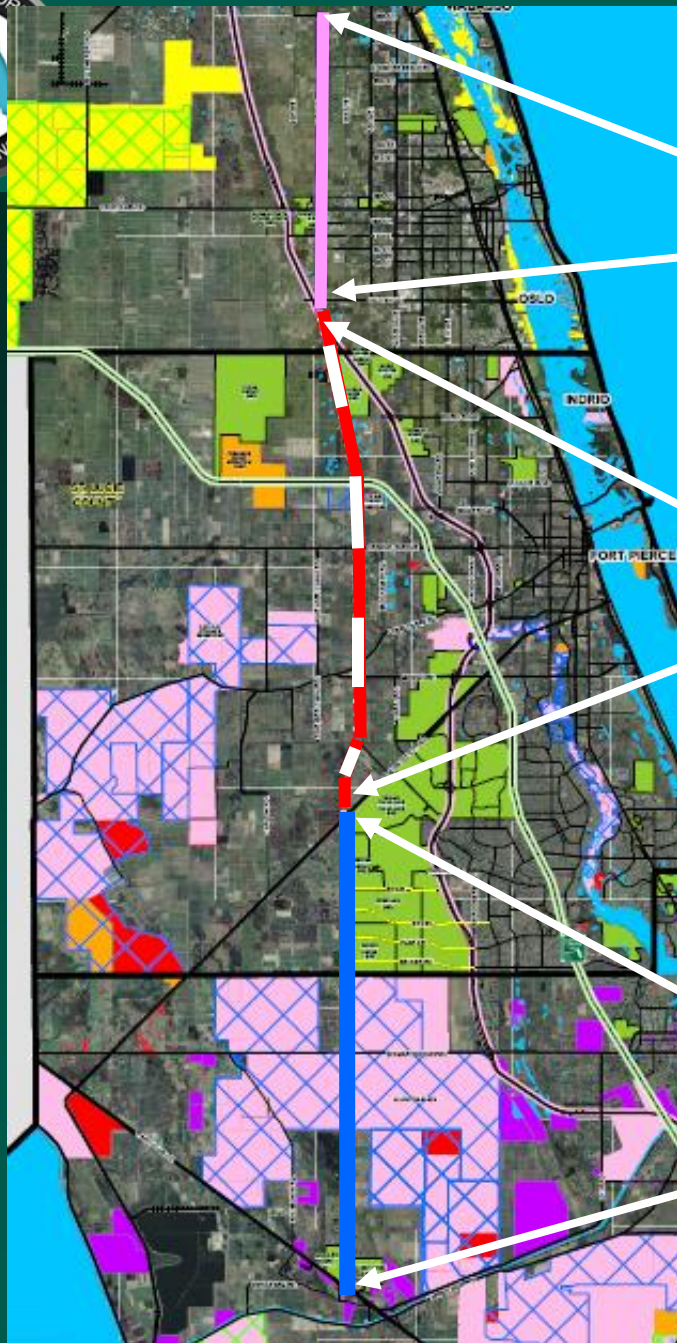
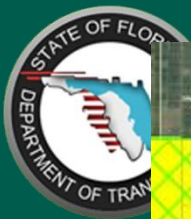
Conservation Lands	Florida Forever Lands
	Florida Managed Areas
	Statewide Greenways and Trails Opportunities
	State Parks
	Conservation Easements/Areas (held by board, commission, federal, or districts)
Surface Waters	Outstanding Florida Waters
	Class 1 and 2 Surface Waters
	Aquatic Preserves
	Springs/Spring Sheds
Wetlands	Marine/Salt Marsh
	Bayheads
	Riverine Swamp



AART Analysis Results

- Map includes feasible alternatives
- Corridors are shown in segments





Corridor B-E-H

Segment H

Segment E

Segment B

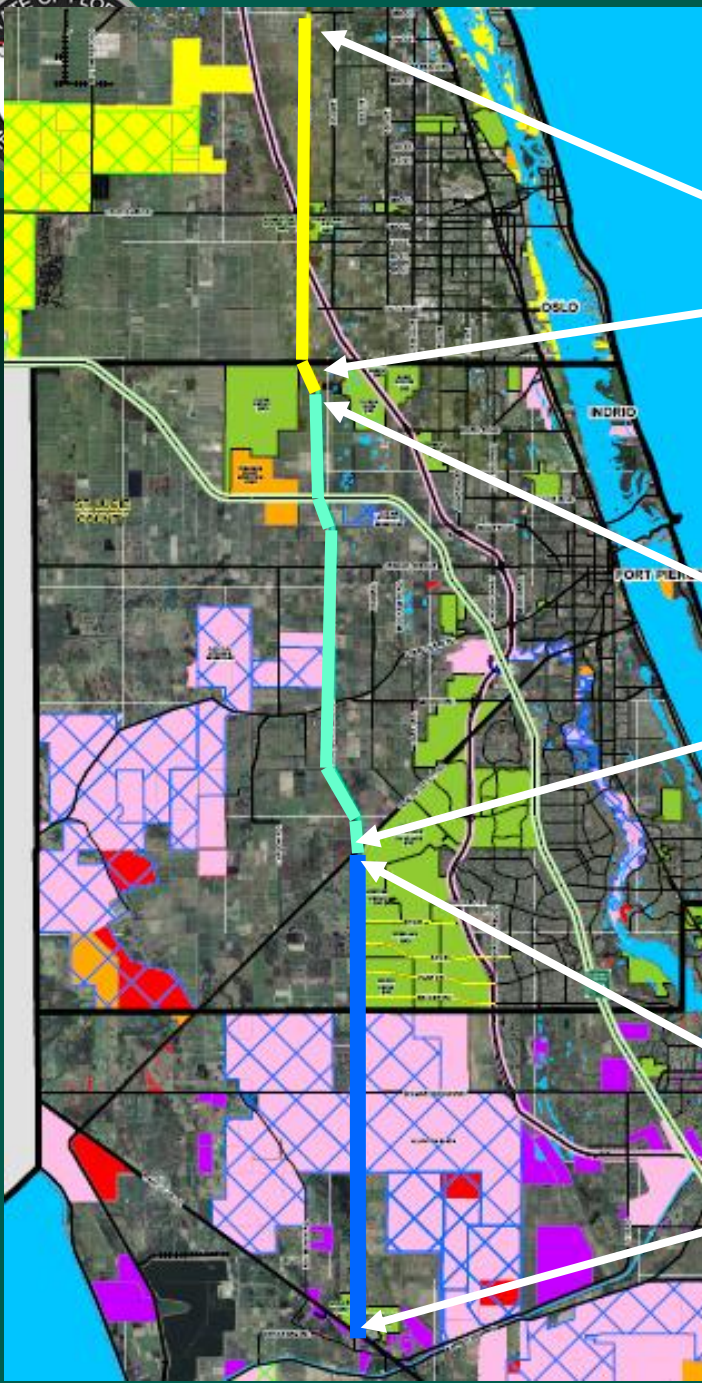


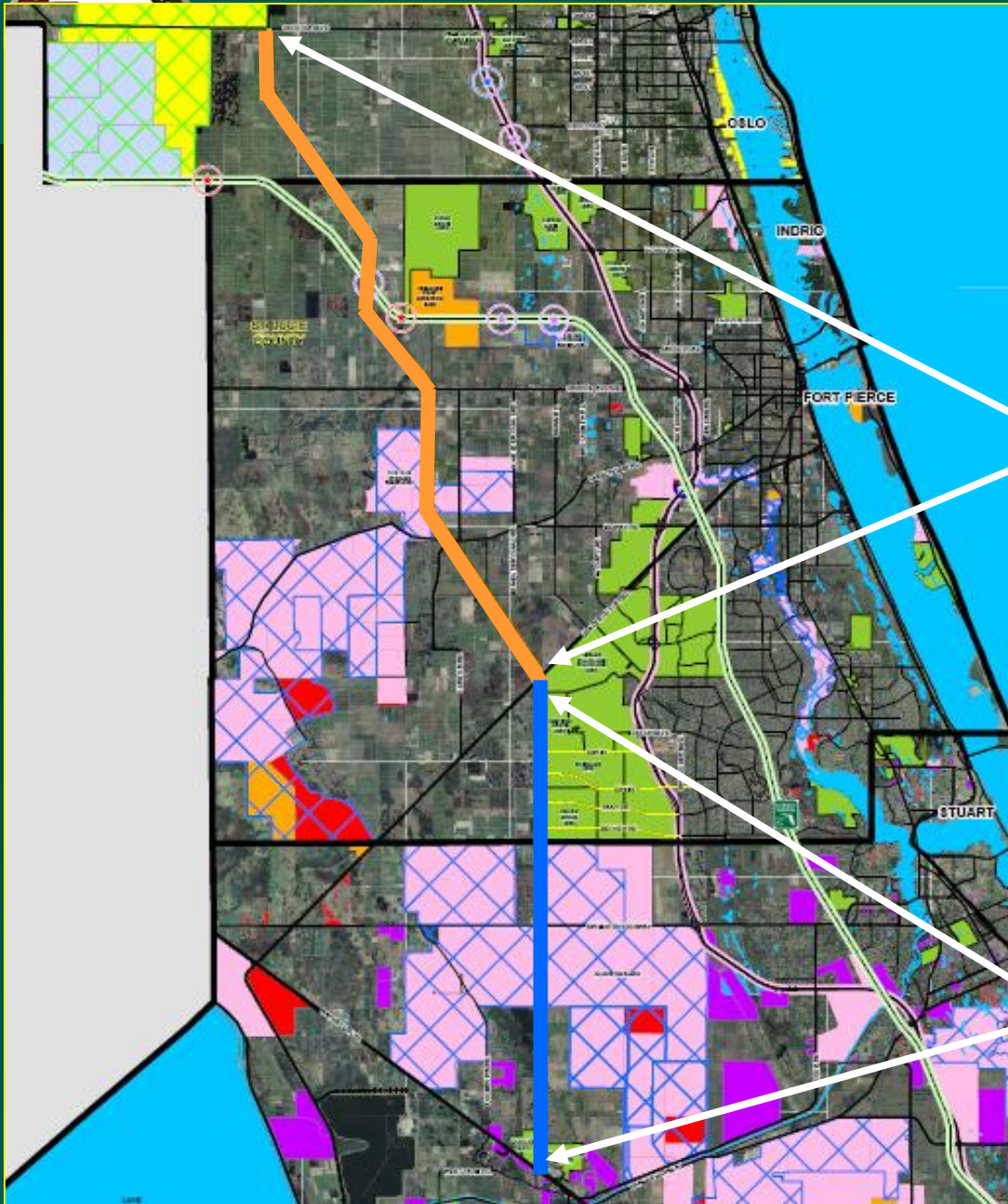
Corridor B-D-F

Segment F

Segment D

Segment B





Corridor B-C

Segment C

Segment B

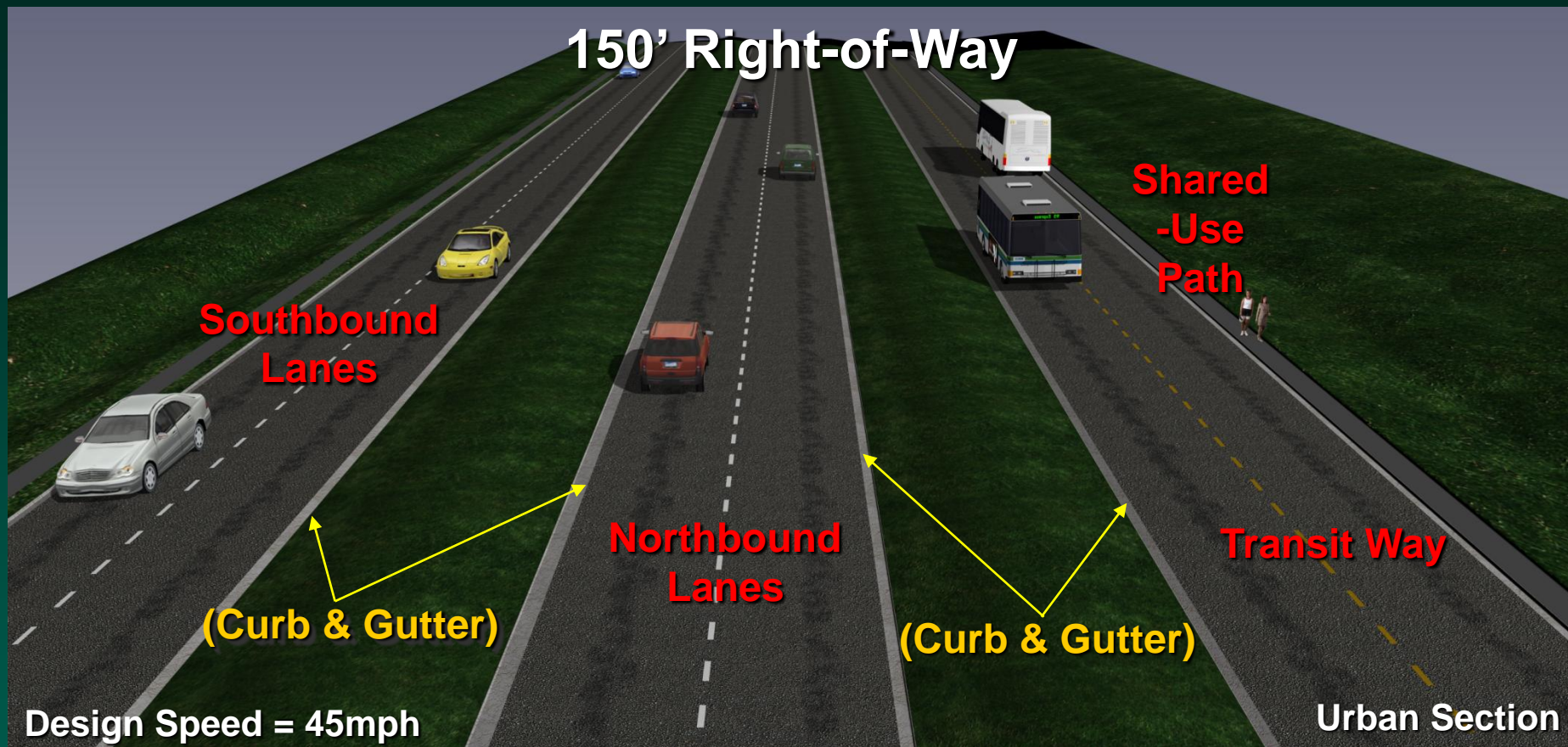
Existing Typical Section

**Southbound
Lane**

**Northbound
Lane**



Typical Section Options





Typical Section Options





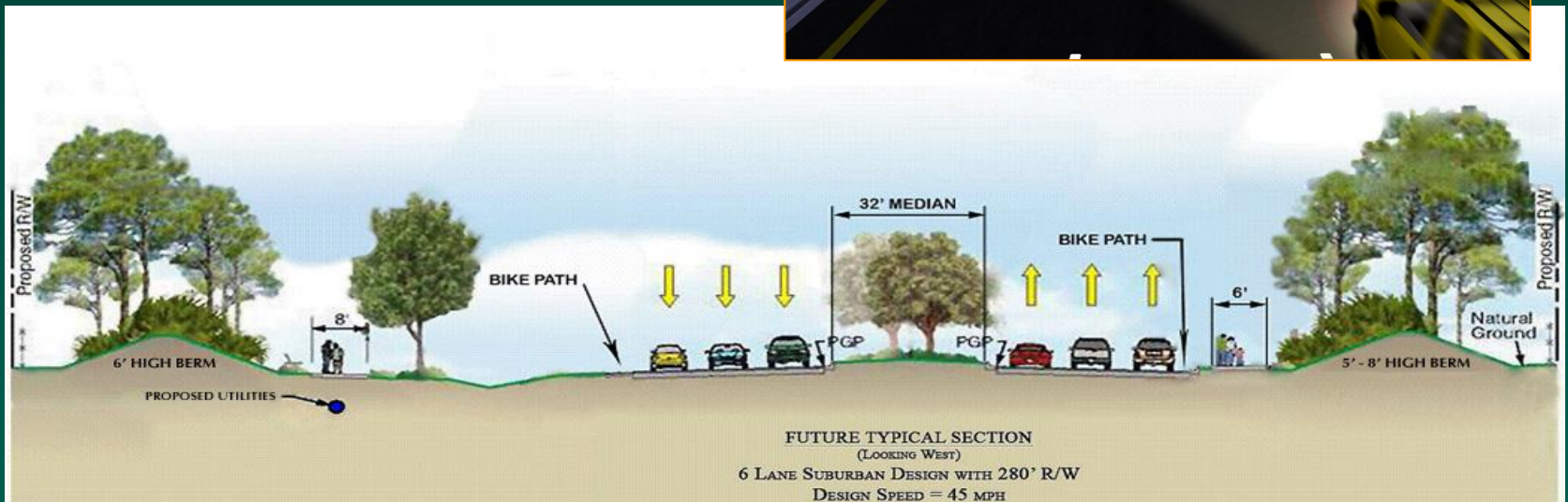
Typical Section Options





Comparable Corridor

Crosstown Parkway





Comparable Corridor

Osceola Parkway



0 5,000 10,000
FEET



ETDM Screening Information

- **Planning Screen**
- **Multiple Alternatives**
- **Purpose and Need Statement in Development**
- **ETAT Release Date – June 2009**



Questions ?

(R)

OSCEOLA
COUNTY

BREVARD
COUNTY

INDIAN
RIVER
COUNTY

OKEECHOBEE
COUNTY

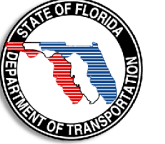
PALM BAY

SEBASTIAN

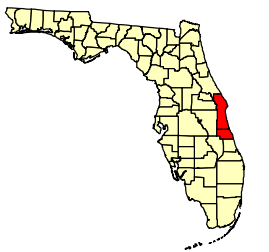
FELLSMERE

INDIAN
RIVER
SHORES

VERO BEACH



DISTRICT IV
CR 609 PACE Study
FM No.: 233158-1-12-02
Contract No.: C8J59



Legend

- Parkway-Conceptual Only
- Inter-City Connector- Conceptual Only
- Water
- Florida's Turnpike
- Interstate 95
- Segment C
- Segment H
- Segment F
- Segment I
- DRI Boundary
- Save Our Rivers- SJRWMD
- Mitigation Bank
- FWC Wildlife Management Areas
- Proposed Developments
- SJRWMD Lands

